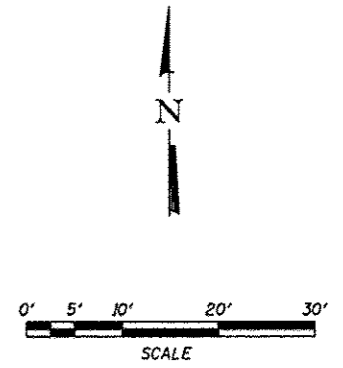
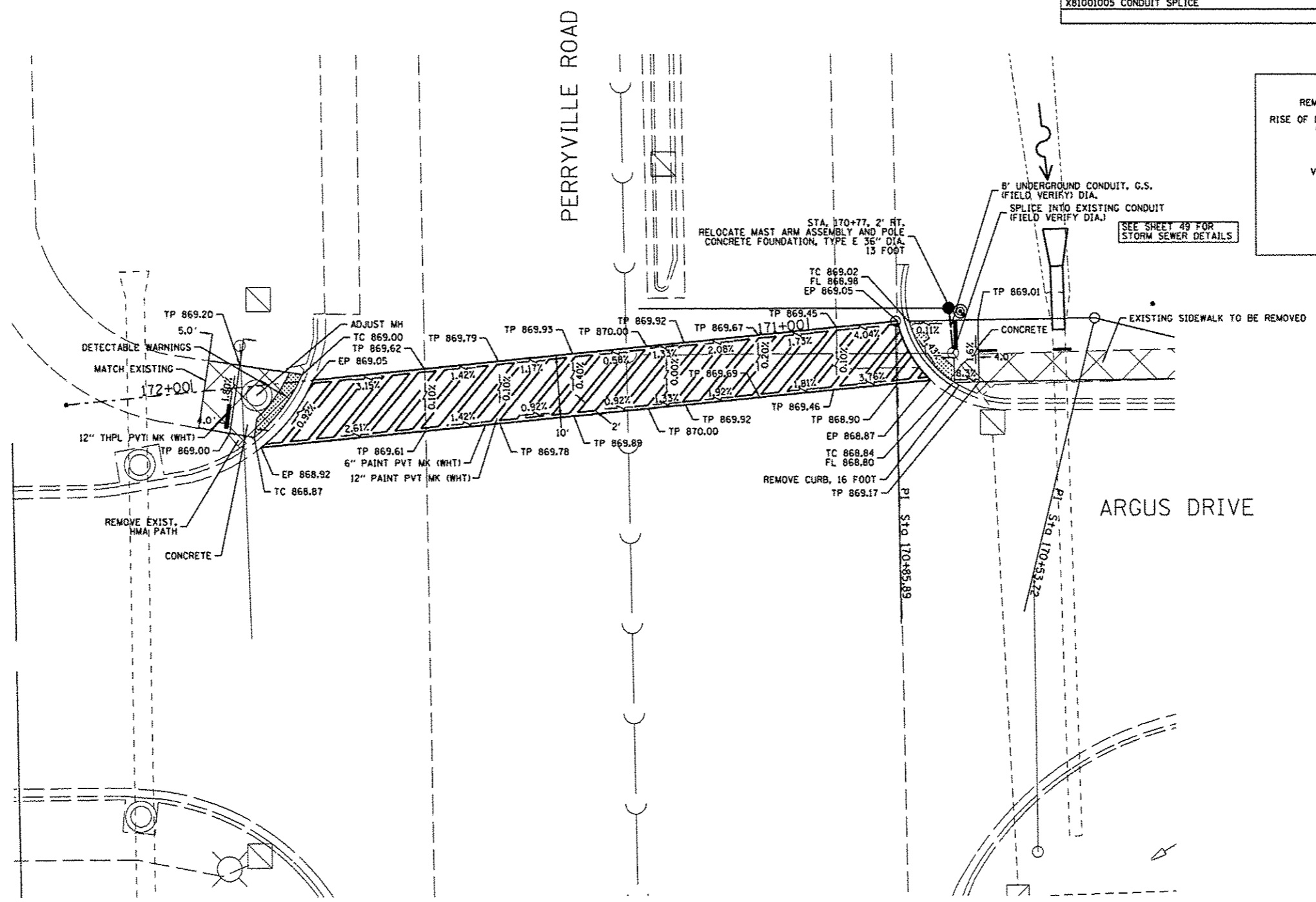
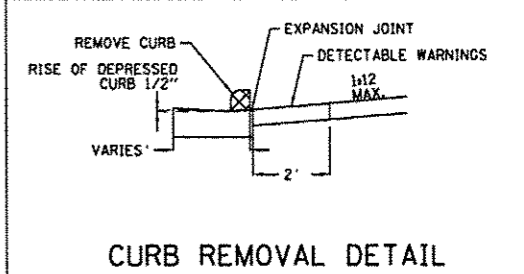


SIGNAL QUANTITIES	
810028200 UNDERGROUND CONDUIT, GALVANIZED STEEL, 2" DIA. (FIELD VERIFY)	8 FOOT
85000200 MAINTENANCE OF EXISTING TRAFFIC SIGNAL INSTALLATION	1 EACH
87800415 CONCRETE FOUNDATION, TYPE E 36-INCH DIA.	13 FOOT
89501300 RELOCATE EXISTING MAST ARM ASSEMBLY AND POLE	1 EACH
X81001005 CONDUIT SPLICE	1 EACH



FILE = S:\PROJECTS\2081\139081\Phase1\DESIGN\51-69\Inter-section-Crossings\plan sheets.dgn

REVISION	DATE	BY	REMARKS
1	03/22/13	TJA	100% COMMENTS FROM JAN. 28, 2013

WINNEBAGO COUNTY
VILLAGE OF CHERRY VALLEY
PERRYVILLE PATH SOUTHEAST CONNECTION



PERRYVILLE PATH INTERSECTION CROSSING
PERRYVILLE ROAD STA. 171+25

SECTION	COUNTY	TOTAL SHEETS	SHEET NO.
01-00502-00-BT	WINNEBAGO	124	69
STA.	STA.		
WHA #: 1139001	DATE: 03/01/2013		