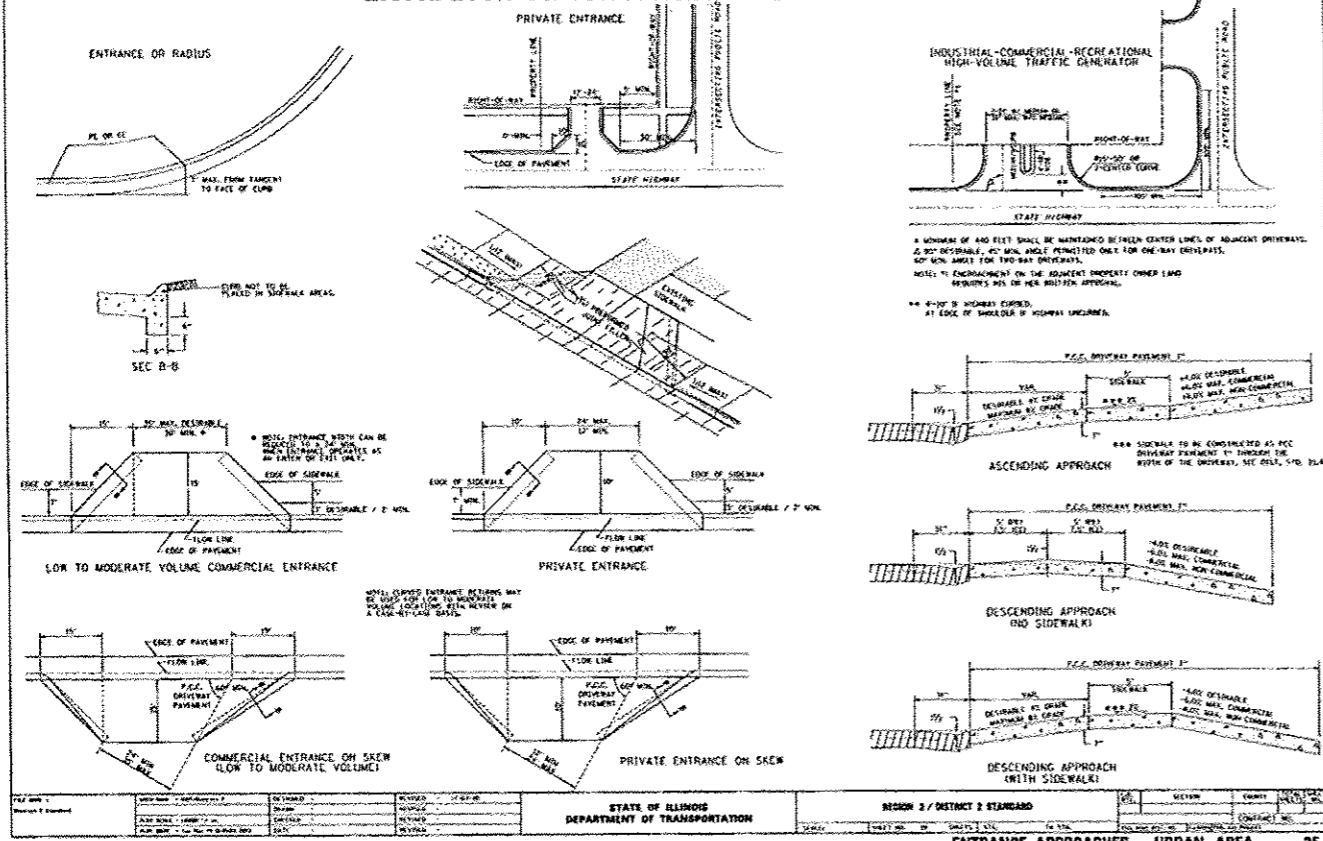
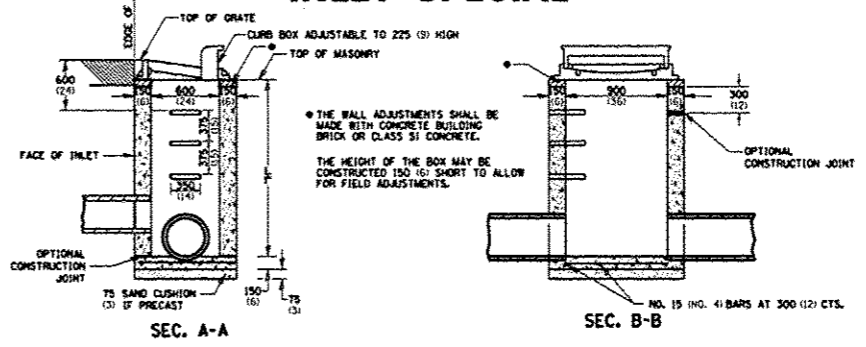


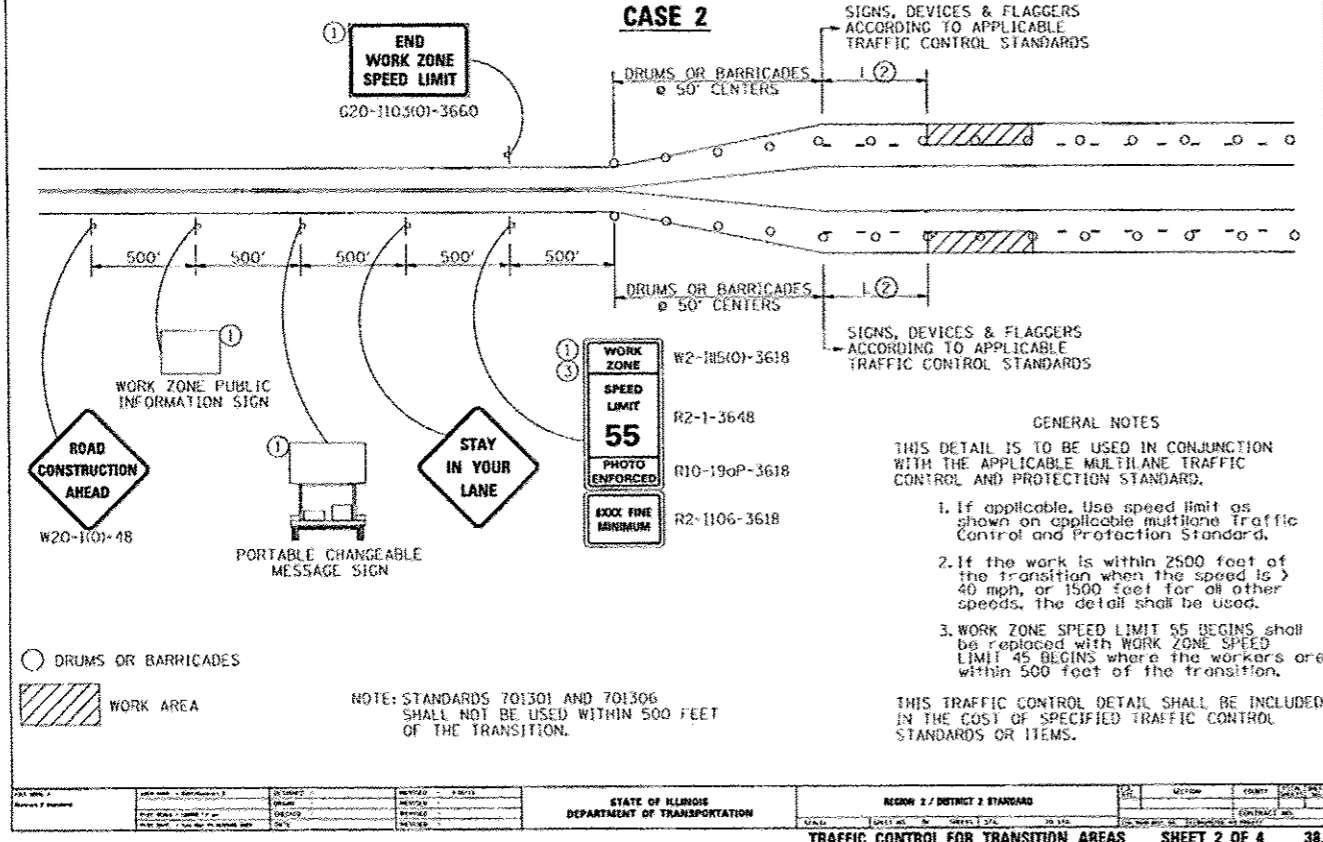
ENTRANCE APPROACHES - URBAN AREA



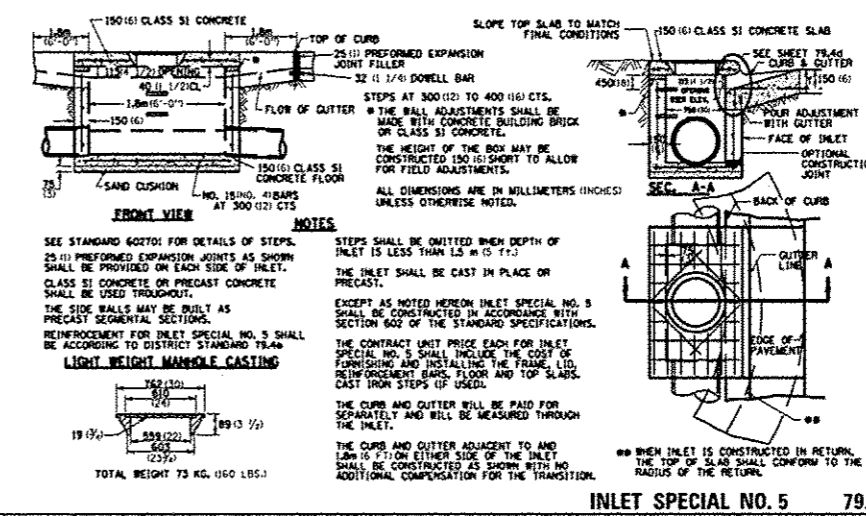
INLET SPECIAL



TRAFFIC CONTROL FOR TRANSITION AREAS



INLET SPECIAL NO. 5



FILE = S:\PROJECTS\2001113901.PHASE 1\DESIGN\PHASE 2 SUMMARY OF QUANTITIES.DGN

REVISION #1	DATE 03/22/13	BY T.J.A.	REMARKS JDDY COMMENTS FROM JAN. 28, 2013	DRAWN T.J.A.	CHECKED C.J.B.	APPROVED C.J.B.	WINNEBAGO COUNTY VILLAGE OF CHERRY VALLEY PERRYVILLE PATH SOUTHEAST CONNECTION	WILLETT HOFMANN ASSOCIATES INC ENGINEERING ARCHITECTURAL LAND SURVEYING 57 AIRPORT DRIVE, ROCKFORD, IL 61109 T. 815.964.2997 DESIGN #184-000938	PERRYVILLE PATH I.D.O.T. DISTRICT 2 STANDARD DETAILS	SECTION 01-00302-00-BT STA. - STA. WHA #: 1139001	COUNTY WINNEBAGO STA. - STA.	TOTAL SHEETS 124	SHEET NO. 124
-------------	---------------	-----------	--	--------------	----------------	-----------------	--	---	---	---	---------------------------------	------------------	---------------