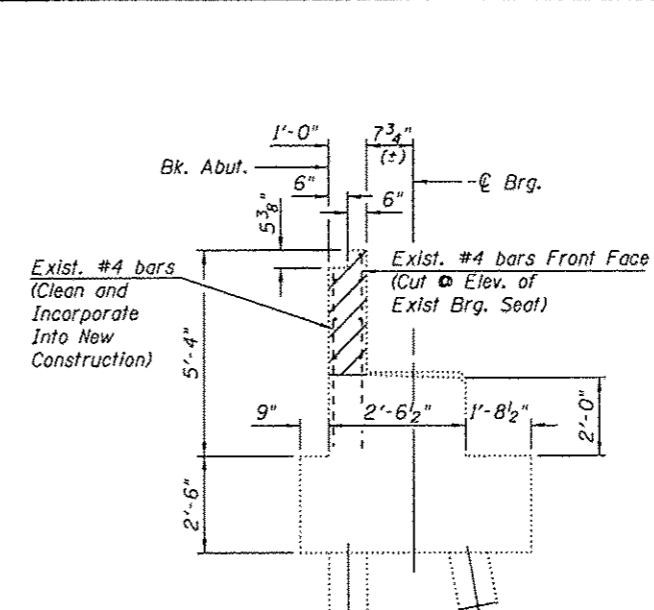
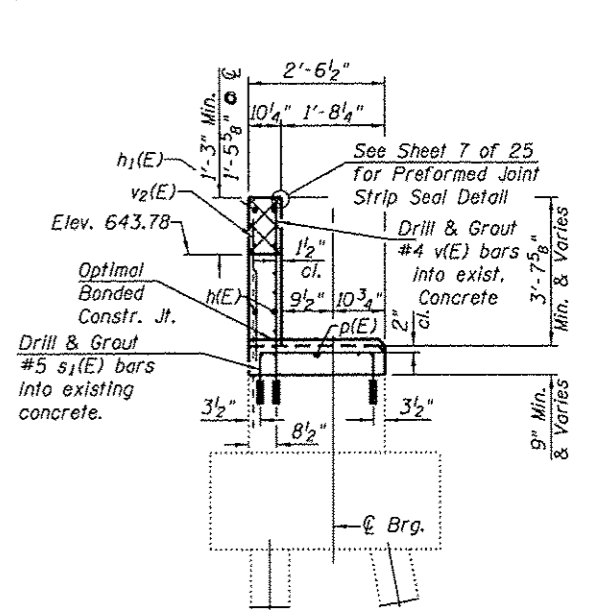


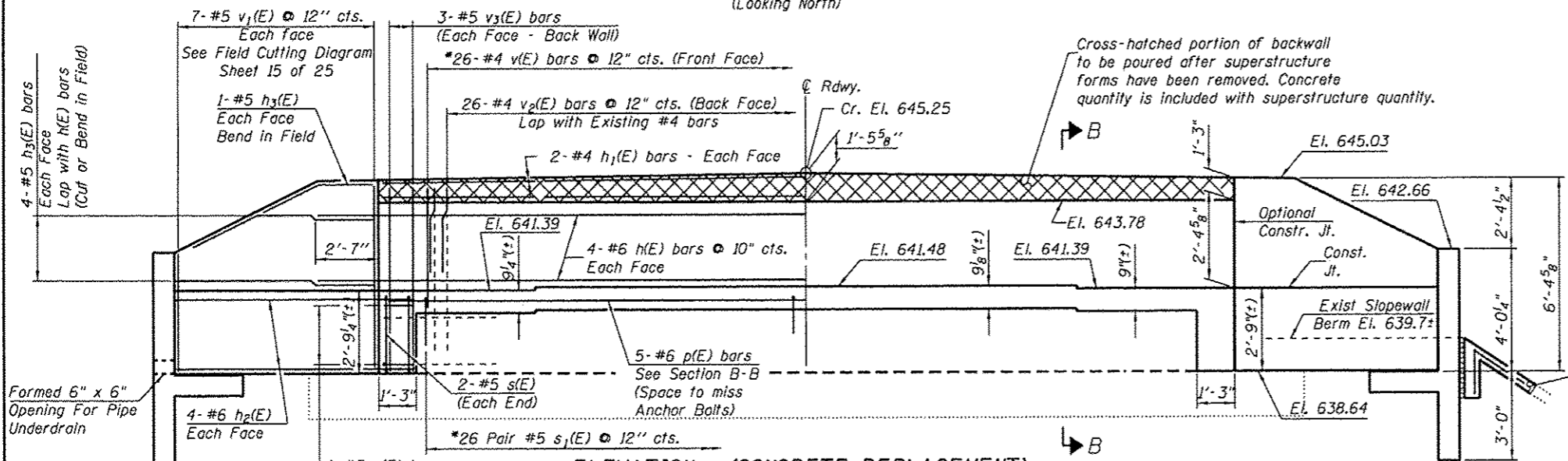
ELEVATION - (CONCRETE REMOVAL)
(Looking North)



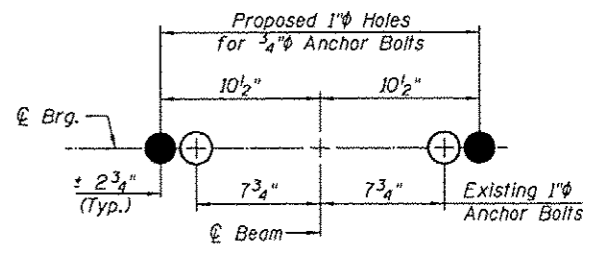
SECTION A-A
(Existing Construction)



SECTION B-B
(Proposed Construction)

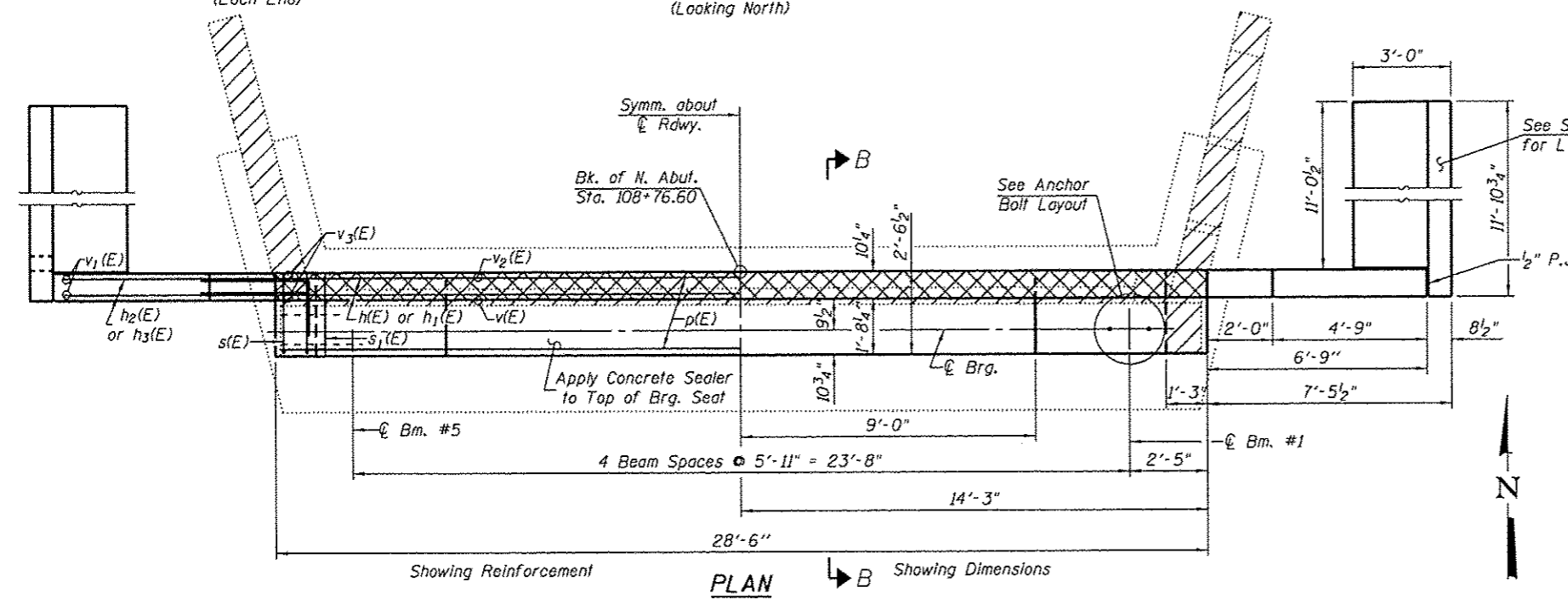


ELEVATION - (CONCRETE REPLACEMENT)
(Looking North)



ANCHOR BOLT LAYOUT

*Note:
New #4 v(E) bars and #5 s₁(E) bars to be grouted into existing concrete in accordance with Section 584 of the Standard Specifications. Based on the requirements of the approved Chemical Adhesive Resin System chosen by the Contractor, v(E) bars and the vertical leg of s₁(E) bars shall be cut in the field to accommodate the depth of drilling required for bar anchorage. The cost of grouting reinforcement bars into existing concrete is included in the cost of "Reinforcement Bars, Epoxy Coated".



PLAN

FILE NAME * 11-194.ABUTS.dgn	USER NAME * ashaw	DESIGNED - A.R.K.	REVISD -	FEHR GRAHAM ENGINEERING & ENVIRONMENTAL ILLINOIS DESIGN FIRM NO. 184-92285	FREEPORT, IL	ROCKFORD, IL	NORTH ABUTMENT STRUCTURE NO. 043-3008 SHEET NO. 13 OF 25 SHEETS	C.H.	SECTION	COUNTY	TOTAL SHEETS	SHEET NO.
PLOT SCALE * #SCALE#	DRAWN - A.D.S.	REVISD -	MONROE, WI		4	11-00138-00-BR		JODAVIESS	34	18		
PLOT DATE * 3/29/2013	CHECKED - A.R.K.	REVISD -			CONTRACT NO. 85585							
					ILLINOIS FED. AID PROJECT							

Note:
For reinforcement bar details and Bill of Material see Sheet 15 of 25