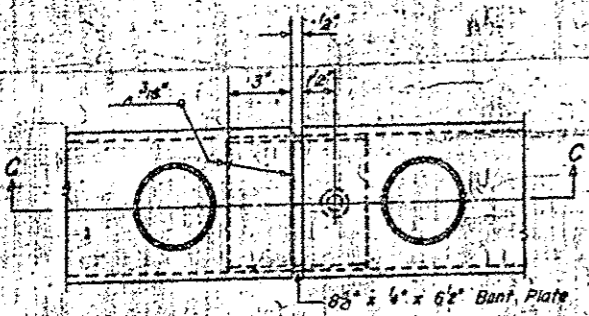
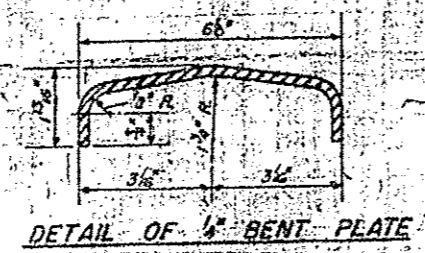


HALF ELEVATION - HANDRAIL

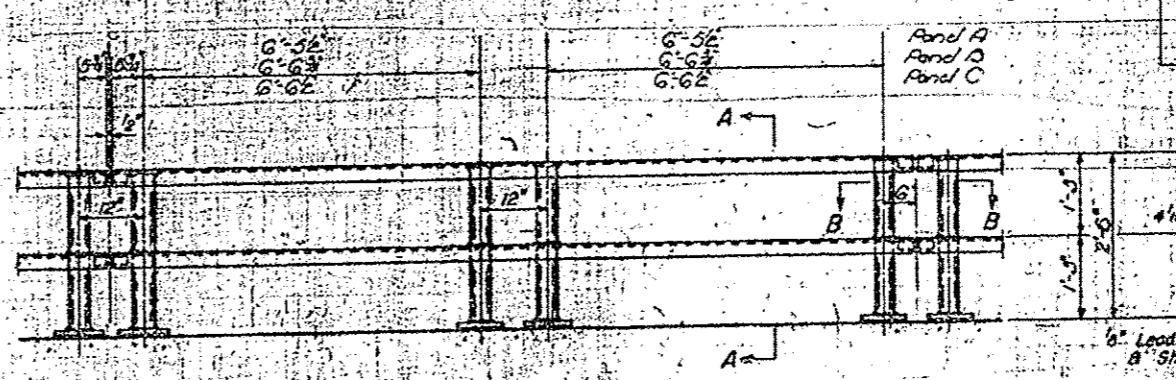
FOR
INFORMATION
ONLY



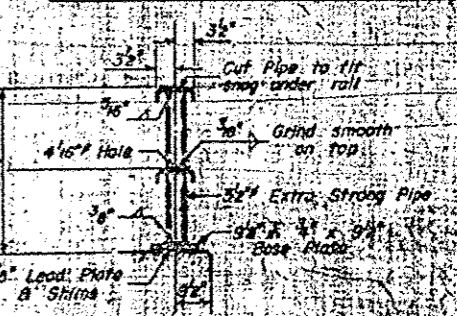
SECTION B-B



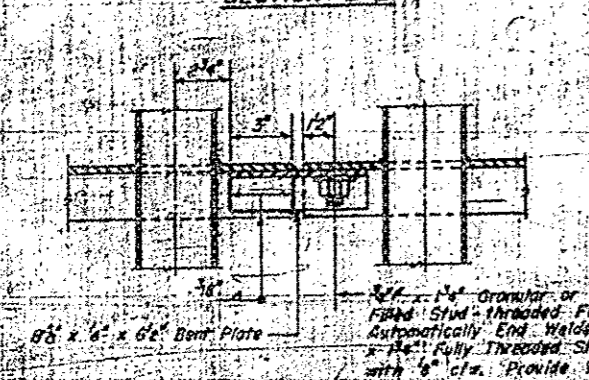
DETAIL OF 1/2 BENT PLATE



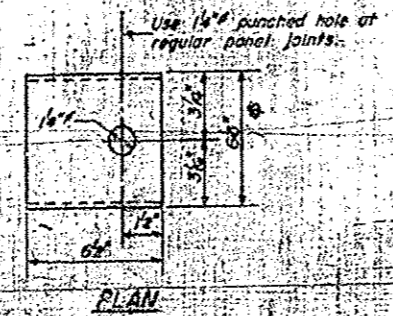
ELEVATION TYPICAL PANEL



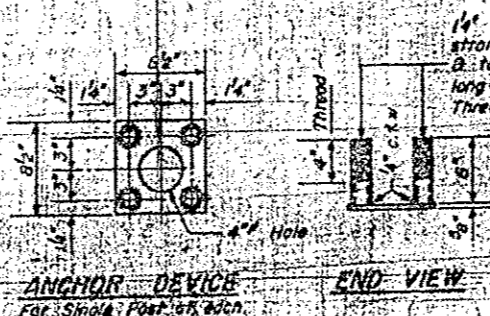
SECTION A-A



SECTION C-C

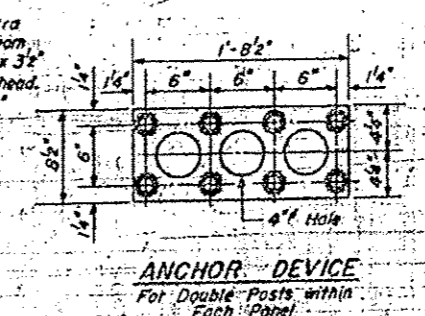


PLAN



ANCHOR DEVICE
For Single Post at each end of Panel

END VIEW

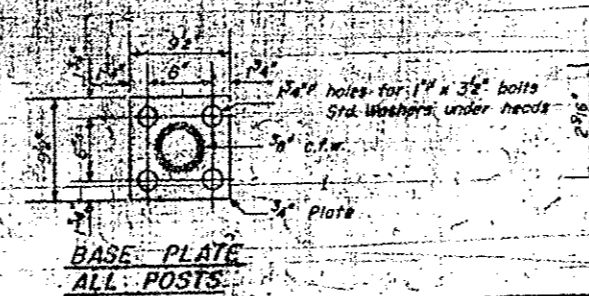


ANCHOR DEVICE
For Double Posts within Each Panel

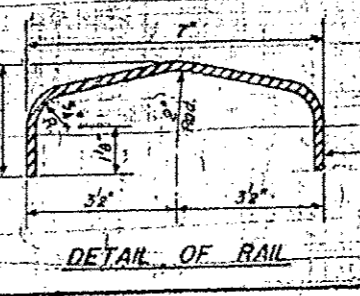
GENERAL NOTES
After erection all Bolts and Washers shall be spot painted with one coat of red lead and oil red putty. Two coats of aluminum paint shall be provided for 50% of the Posts.

BILL OF MATERIAL

Item	Unit	Quantity
Metal Handrail	Linear Feet	300



BASE PLATE
ALL POSTS



DETAIL OF RAIL

HANDRAIL
APPLE RIVER BRIDGE
CASPER TWP. SEC. 7E1
JO DAVIESS COUNTY
574-109-70

DESIGNED BY: R. J. H. H. H.
CHECKED BY: M. P. H. H. H.
DRAWN BY: M. P. H. H. H.
DATE: May 12, 1961

R-12 Drawn 2-3-60