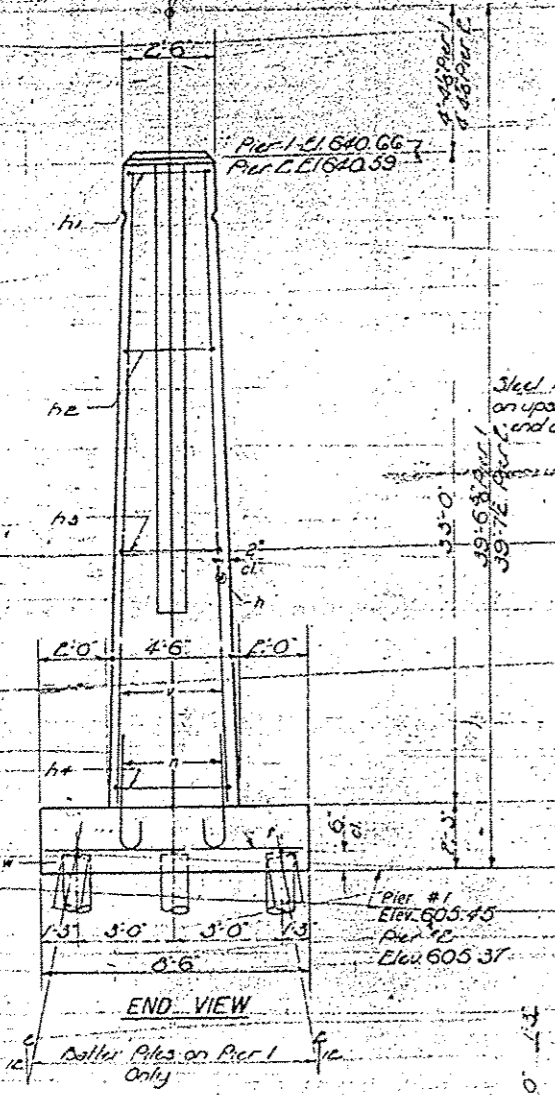
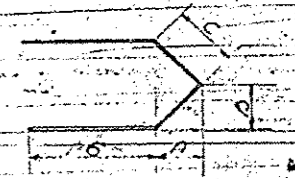
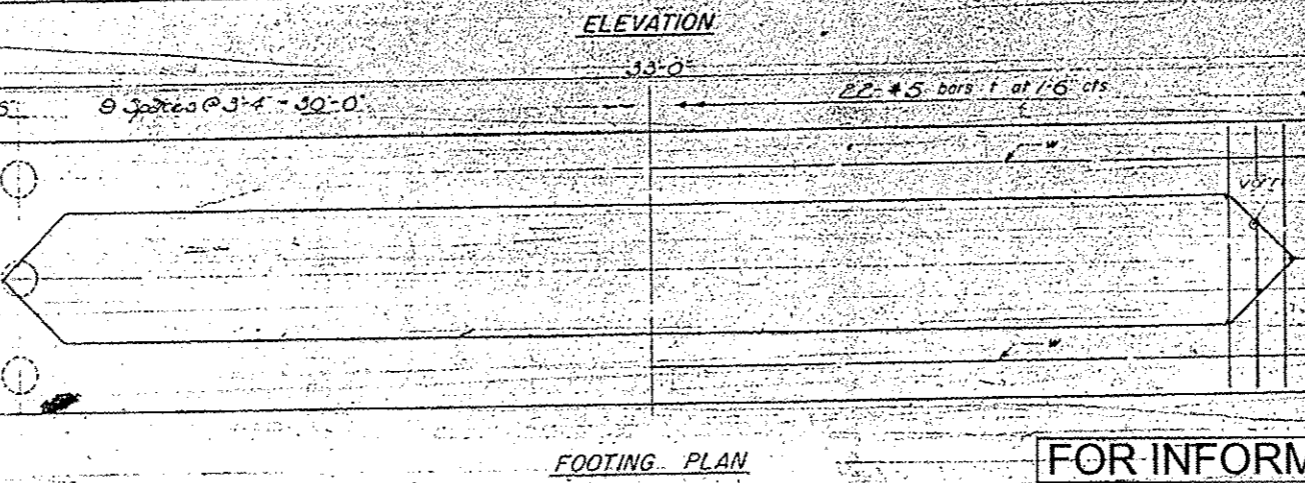
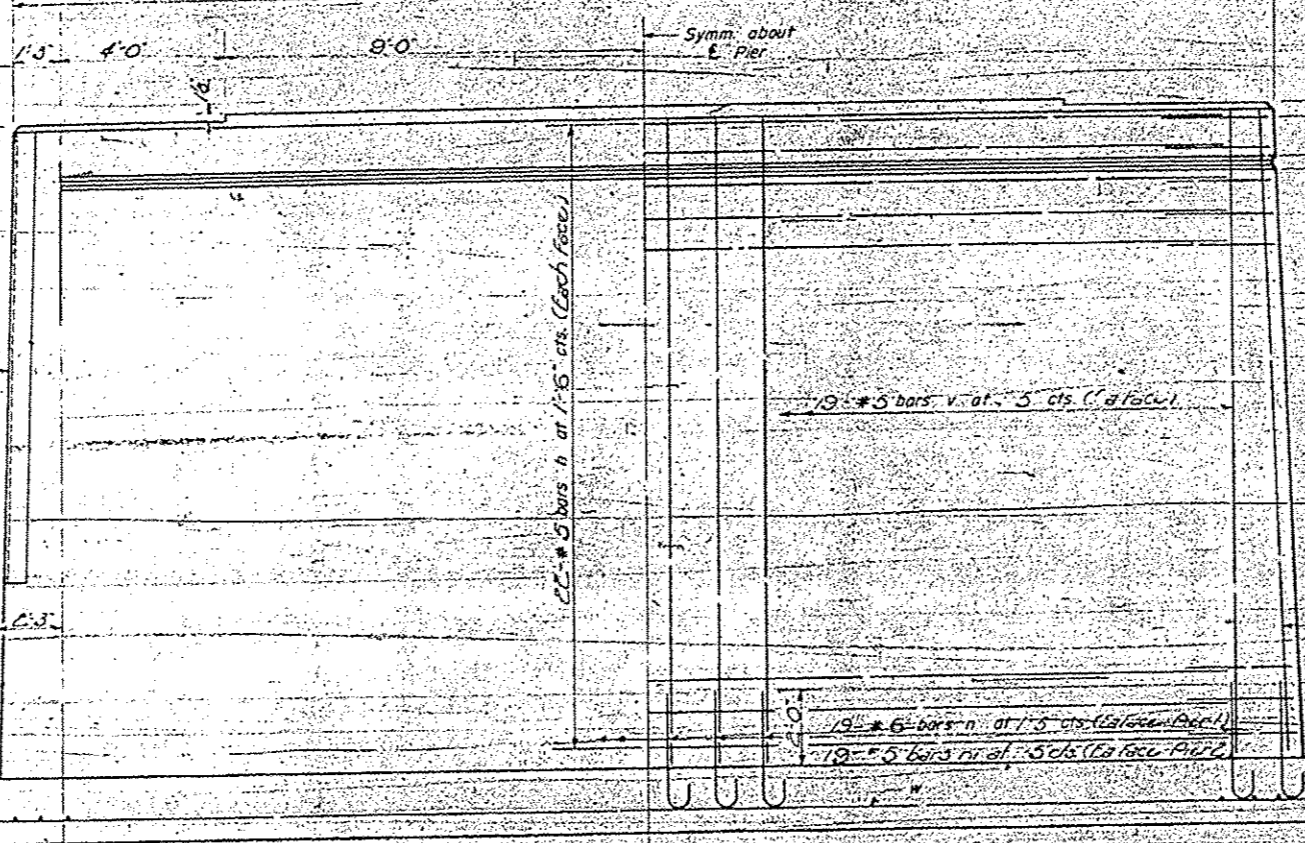
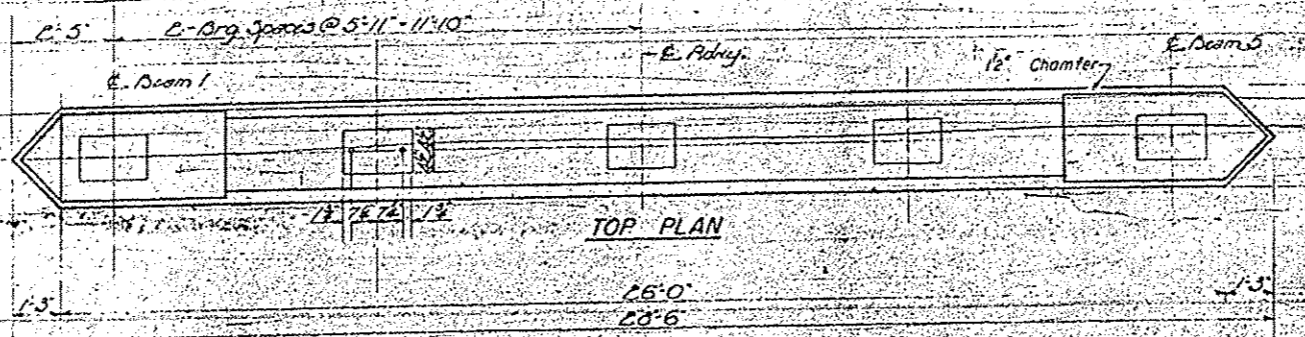


**PILE DATA**  
Type: *Untreated Timber*  
Capacity: *20 tons*  
Est. Length: *15'-0"*  
No. Req'd: *60 (2 Piers) (No Includes One Test Pile)*  
*1 Test Pile at Pier 1*

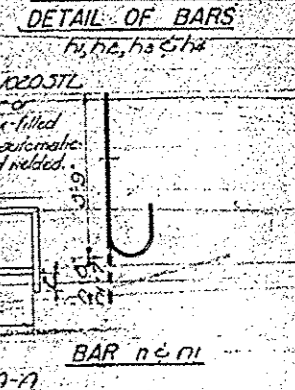
*Pier #1*  
*Sta. 109+37.25*  
*Cr. Elev. 645.00*  
*Pier #2*  
*Sta. 110+12.75*  
*Cr. Elev. 645.00*



**END VIEW**  
*Pier #1*  
*Elev. 605.45*  
*Pier #2*  
*Elev. 605.37*



Bar	A	B	C
h1	1.6	1.7	1.8
h2	1.7	1.7	1.7
h3	1.7	1.7	1.7
h4	1.7	1.7	1.7



**PIERS**  
**BILL OF MATERIAL**

Bar	No.	Size	Length	Shape
h	88	#5	26'-0"	
h1	20	#5	6'-1"	
h2	24	#5	6'-8"	
h3	20	#5	7'-6"	
h4	24	#5	8'-2"	
n	44	#6	4'-5"	C
n1	44	#5	4'-4"	C
f	44	#5	8'-3"	
v	88	#5	32'-6"	
s	12	#4	17'-0"	

Class A Concrete Cu. Yds. 882.4  
Reinforcement Bars Lbs. 7060  
Uncoated Piles  
Test Piles (timber) Each 1  
Steel Steel Lbs. 2400

**PIERS 1 & 2**  
**APPLE RIVER BRIDGE**  
**FA 5 RT. 71 ~ J.C. 765**  
**JODAVIESS COUNTY**  
**STA. 109+75**

**FOR INFORMATION ONLY**

P-1 Re. drawn 7-21-59 Rev. 11-25-59