

STATE OF ILLINOIS DEPARTMENT OF TRANSPORTATION PLANS FOR PROPOSED STP-BR STRUCTURE REPLACEMENT

FAS ROUTE NO.	SEC	COUNTY	TOTAL SHEETS	SHEET NO.
-	*	STEPHENSON	14	1

ILLINOIS PROJECT BROS-0177(045)
* 12-03120-00-BR
CONTRACT NO. 85587

(TR-60) REES ROAD OVER TRIBUTARY TO YELLOW CREEK PROJECT NO. BROS-0177(045) SECTION 12-03120-00-BR STEPHENSON COUNTY S.N. 089-3286

JOB NO. C-92-071-13

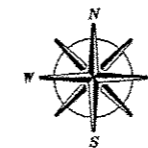
ERINKENT TOWNSHIP STEPHENSON COUNTY

INDEX OF SHEETS

1. COVER SHEET
2. SUMMARY, SCHEDULE OF QUANTITIES AND TYPICAL SECTIONS
3. PLAN AND PROFILE
4. GPE
- 5-6. DECK BEAM DETAILS
- 7-8. SUPER STRUCTURE DETAILS
9. RAIL DETAILS
10. SUBSTRUCTURE ABUTMENTS
11. ROADWAY CROSS SECTIONS
- 12-14. SOIL BORINGS

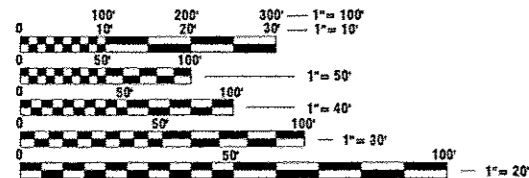
665001-02 Woven Wire Fence

- STANDARDS:
- 000001-06 STANDARD SYMBOLS, ABBREVIATIONS, & PATTERNS
 - 280001-07 TEMPORARY EROSION CONTROL SYSTEMS
 - 515001-03 NAME PLATE FOR BRIDGES
 - 701901-02 TRAFFIC CONTROL DEVICES
 - 720011-01 METAL POSTS FOR SIGNS, MARKERS AND DELINEATORS
 - 728001-01 TELESCOPING STEEL SIGN SUPPORT
 - 729001-01 APPLICATION OF TYPES A & B METAL POSTS
 - BLR 21-9 TYPICAL APPLICATION OF TRAFFIC CONTROL DEVICES
 - BLR 22-7 TYPICAL APPLICATION OF TRAFFIC CONTROL DEVICES FOR CONSTRUCTION ON RURAL LOCAL HIGHWAYS



DESIGN CRITERIA

ROADWAY	ADT	DESIGN SPEED
REES ROAD	58	30
	5% TRUCKS	



FULL SIZE PLANS HAVE BEEN PREPARED USING STANDARD ENGINEERING SCALES. REDUCED SIZED PLANS WILL NOT CONFORM TO STANDARD SCALES. IN MAKING MEASUREMENTS ON REDUCED PLANS, THE ABOVE SCALES MAY BE USED.

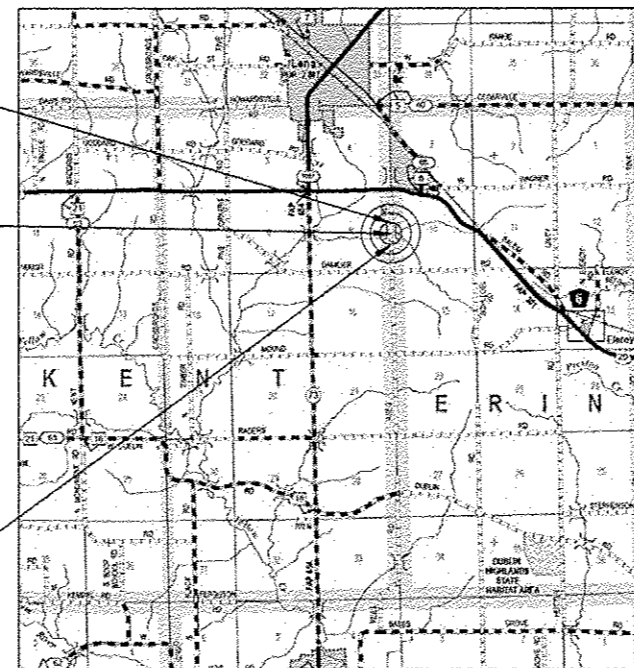
J.U.L.I.E.
JOINT UTILITY LOCATION INFORMATION FOR EXCAVATION
1-800-892-0123

CONTRACT NO. 85587

SECTION 12-03120-00-BR/12-08121-00-BR
ENDS AT STA. 12+00

SECTION 12-03120-00-BR/12-08121-00-BR
INCLUDES THE REMOVAL OF AN EXISTING SINGLE SPAN PRECAST/PRESTRESSED CONCRETE SLAB BRIDGE, AND REPLACEMENT WITH A SINGLE SPAN REINFORCED CONCRETE SLAB BRIDGE ON CLOSED PILE BENT ABUTMENTS. 61'-6" BK.-BK. ABUTS. ALSO INCLUDED IS NECESSARY ROADWAY APPROACH WORK.

SECTION 12-03120-00-BR/12-08121-00-BR
BEGINS AT STA. 8+40



LOCATION MAP

GROSS LENGTH OF SECTION = 360 FEET (0.07 MILE)
NET LENGTH OF SECTION = 360 FEET (0.07 MILE)



Scott Brown 3/20/2013
DATE
SCOTT A. BROWN
DIXON, ILLINOIS
ILLINOIS LICENSED PROFESSIONAL ENGINEER NO. 062-053649
EXPIRES 11-30-2013

PLANS PREPARED BY:

wendler

GROUND BREAKING SOLUTIONS
engineers - surveyors - scientists
www.wendlers.com ph: 815.288.2261
Illinois Professional Design Firm No. 184-006848

STATE OF ILLINOIS DEPARTMENT OF TRANSPORTATION DIVISION OF HIGHWAYS	
SUBMITTED	MAR 26 2013 <i>Mr. J. Isbell</i> COUNTY ENGINEER
PASSED	4-12 2013 <i>Jim T. Johnson</i> DISTRICT 2 ENGINEER OF LOCAL ROADS & STREETS
RELEASED FOR BID BASED ON LIMITED REVIEW	4-12 2013 <i>Paul A. Coetzer</i> DEPUTY DIRECTOR OF HIGHWAYS, REGION 2 ENGINEER

**PRINTED BY THE AUTHORITY
OF THE STATE OF ILLINOIS**