

06-14-13 LETTING ITEM 113

STATE OF ILLINOIS DEPARTMENT OF TRANSPORTATION PLANS FOR PROPOSED STP-BR STRUCTURE REPLACEMENT

(TR-153) DAMEIER ROAD OVER YELLOW CREEK

PROJECT NO. BROS-0177(044)

SECTION 12-08122-00-BR

STEPHENSON COUNTY

S.N. 089-3287

JOB NO. C-92-070-13

KENT TOWNSHIP STEPHENSON COUNTY

FAS ROUTE NO	SEC	COUNTY	TOTAL SHEETS	SHEET NO
-	*	STEPHENSON	16	1
ILLINOIS PROJECT BROS-0177(044)				
* 12-08122-00-BR				
CONTRACT NO. 85590				

INDEX OF SHEETS

1. COVER SHEET
2. SUMMARY AND SCHEDULE OF QUANTITIES AND TYPICAL SECTIONS
3. PLAN AND PROFILE
4. GPE
- 5-6. DECK BEAM DETAILS
- 7-8. SUPER STRUCTURE DETAILS
9. SUBSTRUCTURE ABUTMENTS
10. RAIL DETAILS
- 11-12. ROADWAY CROSS SECTIONS
- 13-16. SOIL BORINGS

- STANDARDS:
- 000001-06 STANDARD SYMBOLS, ABBREVIATIONS, & PATTERNS
 - 280001-07 TEMPORARY EROSION CONTROL SYSTEMS
 - 515001-03 NAME PLATE FOR BRIDGES
 - 701006-04 OFF-ROAD OPERATIONS, 2L, 2W, 15' TO 24" FROM PAVEMENT EDGE
 - 701301-04 LANE CLOSURE, 2L, 2W, SHORT TIME OPERATIONS
 - 701901-02 TRAFFIC CONTROL DEVICES
 - 720011-01 METAL POSTS FOR SIGNS, MARKERS AND DELINEATORS
 - 728001-01 TELESCOPING STEEL SIGN SUPPORT
 - 729001-01 APPLICATION OF TYPES A & B METAL POSTS
 - BLR 21-9 TYPICAL APPLICATION OF TRAFFIC CONTROL DEVICES
 - BLR 22-7 TYPICAL APPLICATION OF TRAFFIC CONTROL DEVICES FOR CONSTRUCTION ON RURAL LOCAL HIGHWAYS

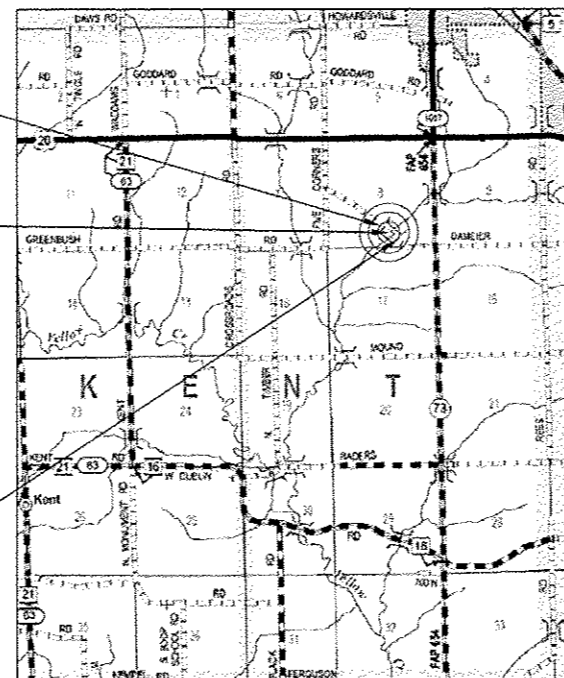
DESIGN CRITERIA

ROADWAY	DESIGN CLASSIFICATION	ADT 2013	DESIGN SPEED
DAMEIER ROAD	LOCAL ROAD	59	30

SECTION 12-08122-00-BR
ENDS AT STA. 11+86.75

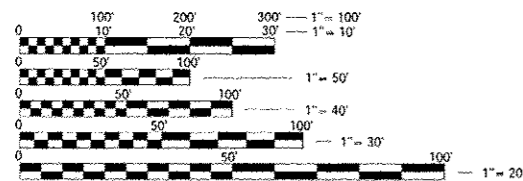
SECTION 12-08122-00-BR
INCLUDES THE REMOVAL OF AN EXISTING SINGLE SPAN PRECAST/PRESTRESSED CONCRETE SLAB BRIDGE, AND REPLACEMENT WITH A SINGLE SPAN REINFORCED CONCRETE SLAB BRIDGE ON CLOSED PILE BENT ABUTMENTS. 43'-6" BK.-BK. ABUTS. ALSO INCLUDED IS NECESSARY ROADWAY APPROACH WORK.

SECTION 12-08122-00-BR
BEGINS AT STA. 8+13.25



LOCATION MAP

GROSS LENGTH OF SECTION = 373.5 FEET (0.07 MILE)
NET LENGTH OF SECTION = 373.5 FEET (0.07 MILE)



FULL SIZE PLANS HAVE BEEN PREPARED USING STANDARD ENGINEERING SCALES. REDUCED SIZED PLANS WILL NOT CONFORM TO STANDARD SCALES. IN MAKING MEASUREMENTS ON REDUCED PLANS, THE ABOVE SCALES MAY BE USED.

J.U.L.I.E.
JOINT UTILITY LOCATION INFORMATION FOR EXCAVATION
1-800-892-0123

CONTRACT NO. 85590



DATE 4/10/2013
SCOTT A. BROWN
DIXON, ILLINOIS
ILLINOIS LICENSED PROFESSIONAL ENGINEER NO. 062-053649
EXPIRES 11-30-2013

PLANS PREPARED BY:



STATE OF ILLINOIS
DEPARTMENT OF TRANSPORTATION
DIVISION OF HIGHWAYS

SUBMITTED 4-8 20 13
Scott A. Brown
COUNTY ENGINEER

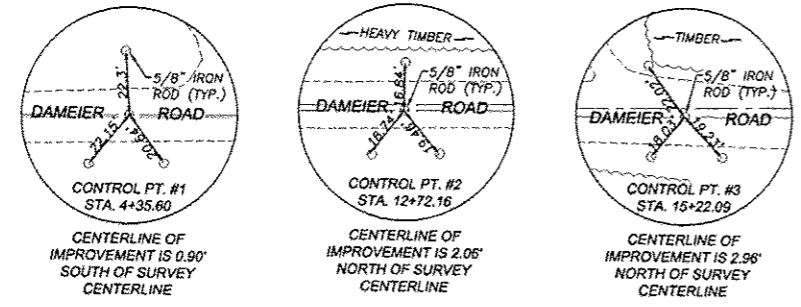
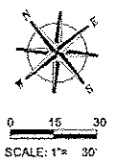
PASSED 4-12 20 13
Paul A. Cocton
DISTRICT ENGINEER OF LOCAL ROADS & STREETS

RELEASED FOR BID BASED ON LIMITED REVIEW
4-12 20 13
Paul A. Cocton
DEPUTY DIRECTOR OF HIGHWAYS, REGION 2 ENGINEER

PRINTED BY THE AUTHORITY
OF THE STATE OF ILLINOIS

FAS ROUTE NO	SEC	COUNTY	TOTAL SHEETS	SHEET NO
-	*	STEPHENSON	16	3

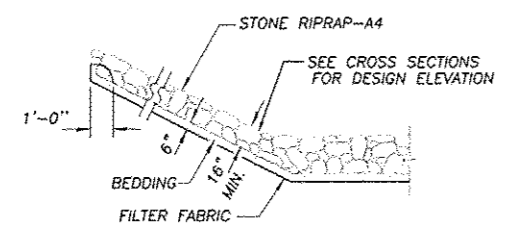
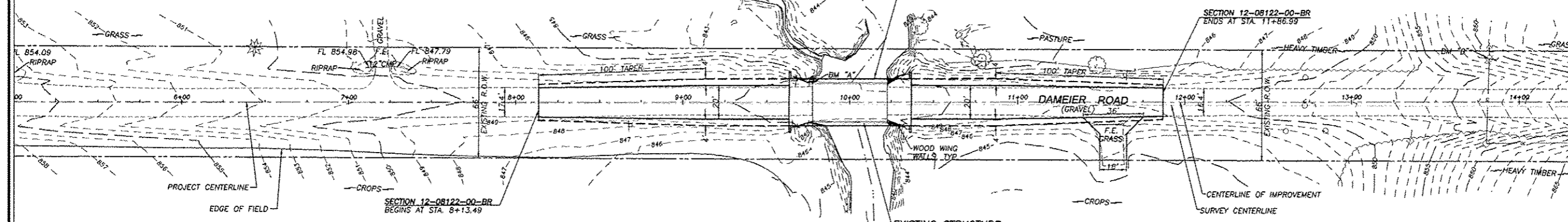
ILLINOIS PROJECT BROS-0177(044)
 * 12-08122-00-BR
 CONTRACT NO. 85590



BENCHMARKS
 BENCHMARK "A"
 SET CHISELED "C" AT NORTH CORNER OF EXISTING STRUCTURE
 ELEVATION: 851.32
 BENCHMARK "B"
 SET COTTON SPINDLE IN SOUTH FACE OF POWER POLE W/TRANSFORMER
 ±360' SE OF BRIDGE. NORTH ROW DAMEIER RD. NEAR HOUSE #11200
 ELEVATION: 861.44
 BENCHMARK "C"
 SET COTTON SPINDLE IN SOUTH FACE OF 1ST POWER POLE SE OF
 BRIDGE. SOUTH ROW DAMEIER RD. NEAR HOUSE #11208
 ELEVATION: 861.44

PROPOSED STRUCTURE
 STA. 10+00
 SINGLE SPAN BRIDGE
 73'-6" BK-BK, ABUTS, 28' WIDE
 33" DEEP PPC BK BEAMS 0' SKEW
 SPILL-THRU PILE BENT ABUTMENTS

EXISTING STRUCTURE
 STA. 10+00
 SINGLE SPAN PRECAST/PRESTRESSED
 CONCRETE DECK BRIDGE ON TIMBER
 PILING WITH CLOSED TIMBER BACKING
 ABUTMENTS & WINGS ±44' LONG
 0' SKEW



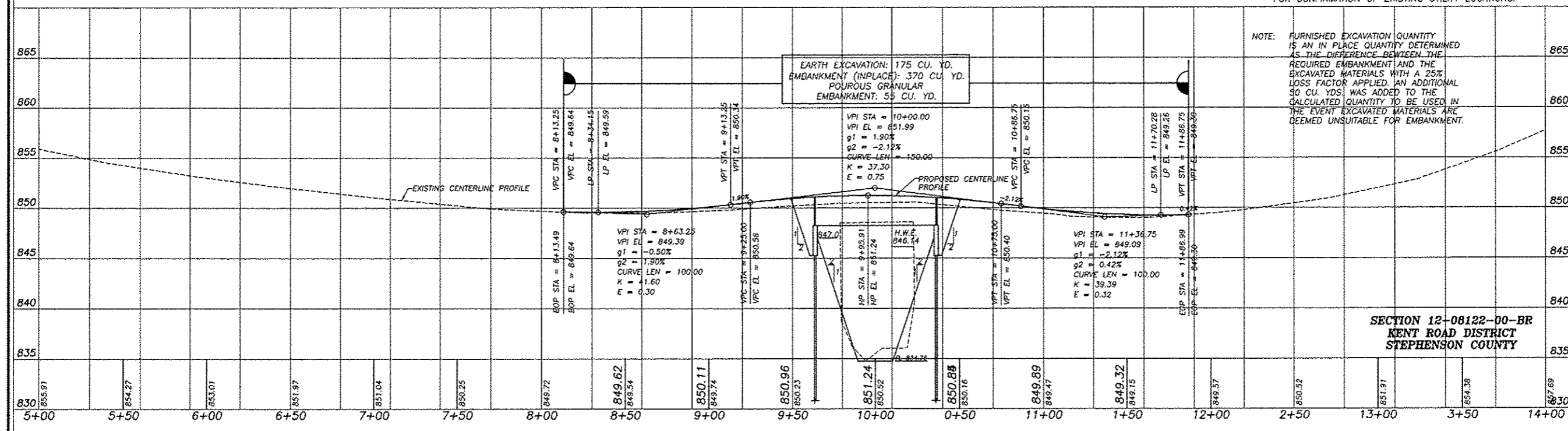
SECTION THRU STONE
 DUMPED RIPRAP

SCALES:
 1" = 30' HOR
 1" = 5' VER

NOTES
 ALL FENCES DISTURBED BY CONSTRUCTION ACTIVITIES SHALL BE
 RELOCATED AND RESTORED BY THE CONTRACTOR AS DIRECTED BY
 BY THE ENGINEER.
 (SEE SPECIAL PROVISIONS - COST CONSIDERED INCIDENTAL TO
 THE CONTRACT)

UTILITIES
 GAS: NICOR
 SCOTT PUFFER
 4651 LINDEN ROAD
 ROCKFORD, ILLINOIS 61109
 TELEPHONE: FRONTIER COMMUNICATIONS
 2239 NEWBERG ROAD
 BELVIDERE, ILLINOIS 61008
 ELECTRIC: COM ED
 123 ENERGY AVENUE
 ROCKFORD, ILLINOIS

THE LOCATIONS OF UTILITY FACILITIES AS SHOWN ON THESE
 PLANS ARE AN ESTIMATE AND NOT INTENDED AS FIELD
 LOCATIONS FOR CONSTRUCTION. THE CONTRACTOR IS
 RESPONSIBLE FOR CONTACTING ALL UTILITIES PRIOR TO
 CONSTRUCTION AND CALLING J.U.L.I.E. AT 800-892-0123
 FOR CONFIRMATION OF EXISTING UTILITY LOCATIONS.



NOTE: FURNISHED EXCAVATION QUANTITY
 IS AN IN PLACE QUANTITY DETERMINED
 AS THE DIFFERENCE BETWEEN THE
 REQUIRED EMBANKMENT AND THE
 EXCAVATED MATERIALS WITH A 25%
 LOSS FACTOR APPLIED. AN ADDITIONAL
 50 CU. YDS WAS ADDED TO THE
 CALCULATED QUANTITY TO BE USED IN
 THE EVENT EXCAVATED MATERIALS ARE
 DEEMED UNSUITABLE FOR EMBANKMENT.

SECTION 12-08122-00-BR
 KENT ROAD DISTRICT
 STEPHENSON COUNTY

INFRASTRUCTURE IMPROVEMENTS
 OF
 BRIDGE REPLACEMENT - DAMEIER ROAD
 FOR
 STEPHENSON COUNTY

SHEET TITLE
**PLAN
 &
 PROFILE**

JOB NUMBER
 2120191

DATE
 04/10/2013

SHEET NO.

3 of 16

wendler
 wendler engineering services, inc.
 geotechnical solutions
 engineers - surveyors - scientists
 www.wendlereng.com ph: 815.283.2261
 800 Professional Office Bldg. No. 104-00048

REVISIONS

NO.	DATE	DESCRIPTION

FAS ROUTE NO.	SEC	COUNTY	TOTAL SHEETS	SHEET NO.
-	*	STEPHENSON	16	5

ILLINOIS PROJECT BROS-0177(044)

* 12-08122-00-BR
CONTRACT NO. 85590

SCALE: 1" = 1'-0"

REVISION	DATE

DESIGNED BY:	DRAWN BY:	CHECKED BY:	DATE:

wendler
GROUND-BREAKING SOLUTIONS
engineers - surveyors - scientists
www.wendlergs.com ph. 815.286.2261
Illinois Professional Design Firm No. 154-00834

DECK BEAM DETAILS
OF
WEST DAMEIER ROAD BRIDGE
FOR
STEPHENSON COUNTY

SHEET TITLE

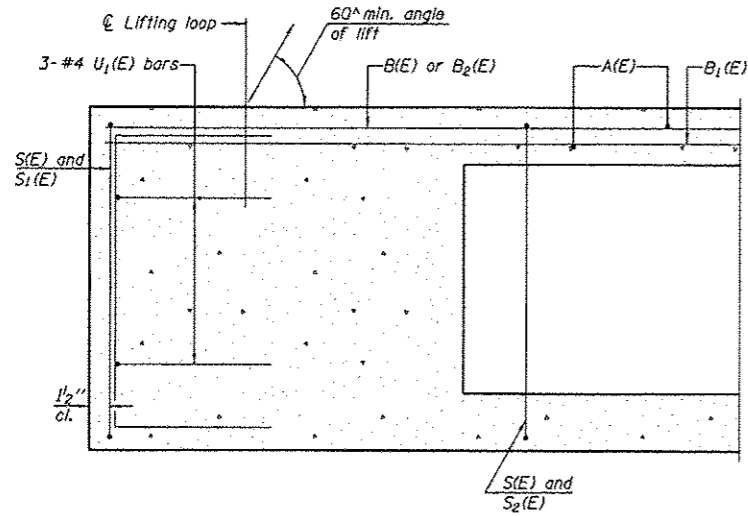
DETAILS

JOB NUMBER
2120191

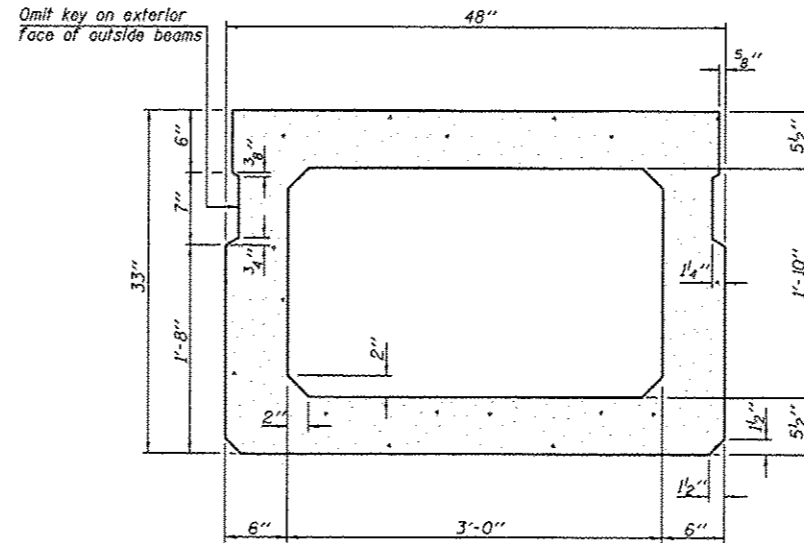
DATE
4/01/2013

SHEET NO.

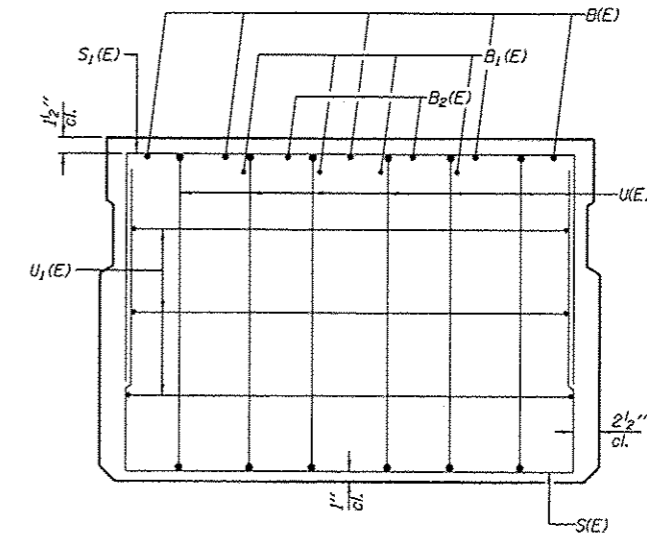
5 of 16



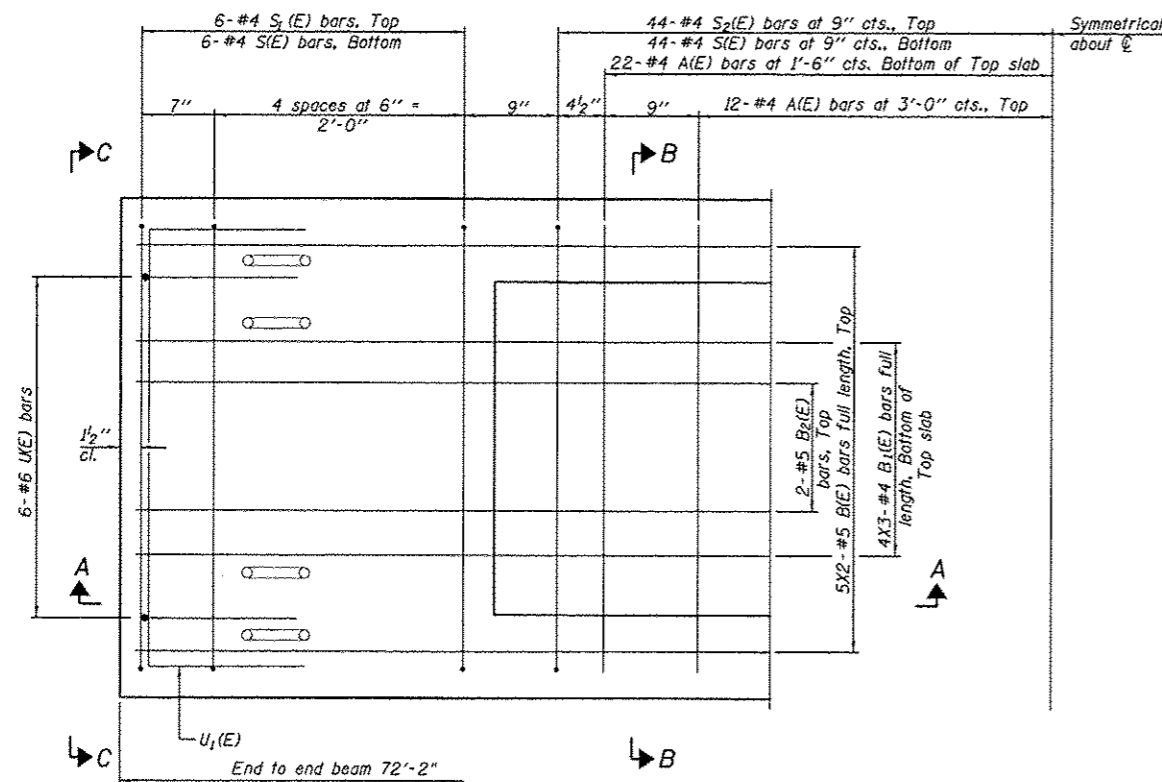
SECTION A-A



SECTION B-B
(Showing dimensions)

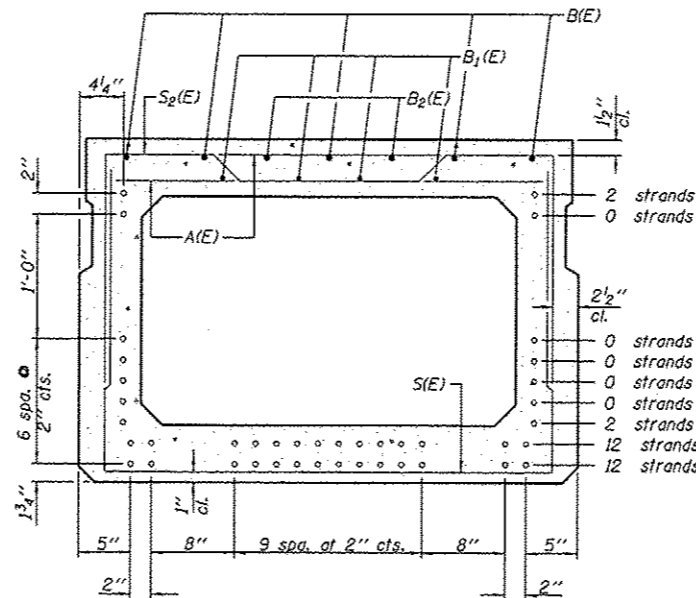


VIEW C-C



PLAN VIEW

Symmetrical about C



SECTION B-B

(Showing reinforcement and permissible strand locations)
Note: Place the number of strands specified in each row symmetrically about the centerline of beam in the permissible strand locations shown.

BAR LIST
ONE BEAM ONLY
(For information only)

Bar	No.	Size	Length	Shape
A(E)	32	#4	3'-7"	—
B(E)	10	#5	37'-2"	—
B1(E)	12	#4	25'-3"	—
B2(E)	4	#5	10'-0"	—
S(E)	100	#4	8'-5"	□
S1(E)	12	#4	7'-3"	□
S2(E)	88	#4	7'-6"	□
U(E)	12	#6	5'-0"	□
U1(E)	6	#4	6'-0"	□

Note: See sheet 6 of 16 for additional details and Bill of Material.

MINIMUM BAR LAP

#4 bar = 2'-0"
#5 bar = 2'-6"

Note: Spacing of S(E) and S2(E) bars may be adjusted up to 4" in the immediate area of the transverse tie diaphragms to miss the block outs for the transverse ties.

PD-3348-0

7-1-10

S.N. 089-3287
33" X 48" PPC DECK BEAMS
CONCRETE OVERLAY DETAILS
SECTION 12-08122-00-BR
STEPHENSON COUNTY

FAS ROUTE NO	SEC	COUNTY	TOTAL SHEETS	SHEET NO
-	*	STEPHENSON	16	6
ILLINOIS PROJECT BROS-0177(044)				
* 12-08122-00-BR				
CONTRACT NO. 85590				

SCALE: 1" = 1'-0"

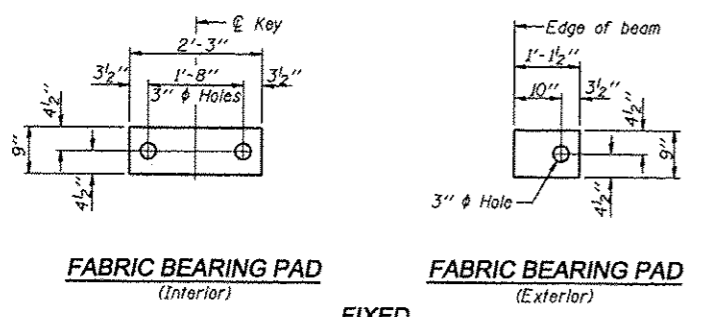
REVISIONS	DATE	REASON

DESIGNED BY	CHECKED BY	DATE
DRAWN BY		

wendler
 GROUND-BREAKING SOLUTIONS
 engineers - surveyors - scientists
 www.wendlergs.com ph: 815.284.2261
 Illinois Professional Design Firm No. 104-000848

DECK BEAM DETAILS
 OF
 WEST DAMEIER ROAD BRIDGE
 FOR
 STEPHENSON COUNTY

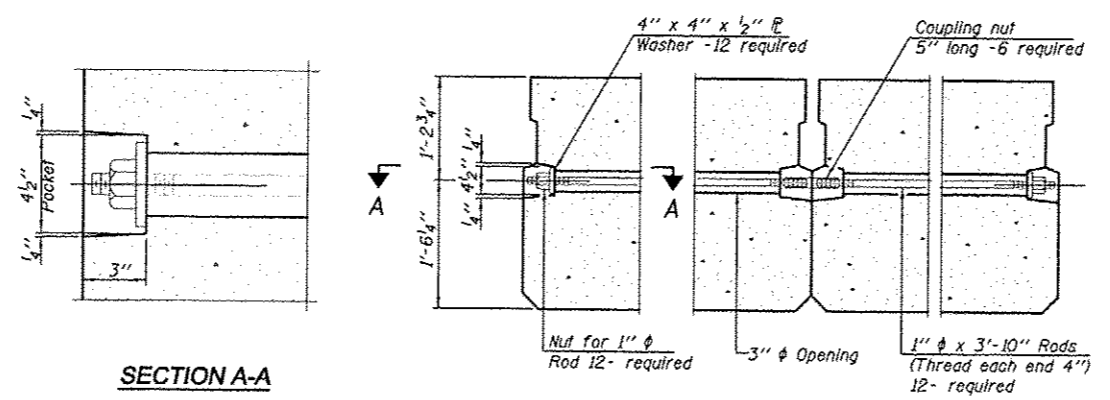
SHEET TITLE
DETAILS
JOB NUMBER 2120191
DATE 4/01/2013
SHEET NO. 6 of 16



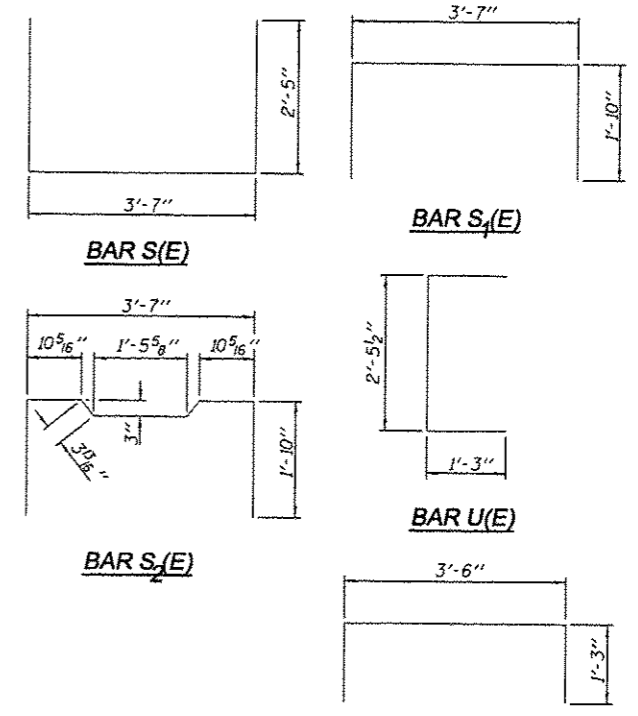
FABRIC BEARING PAD
(Interior) **FABRIC BEARING PAD**
(Exterior)

FIXED

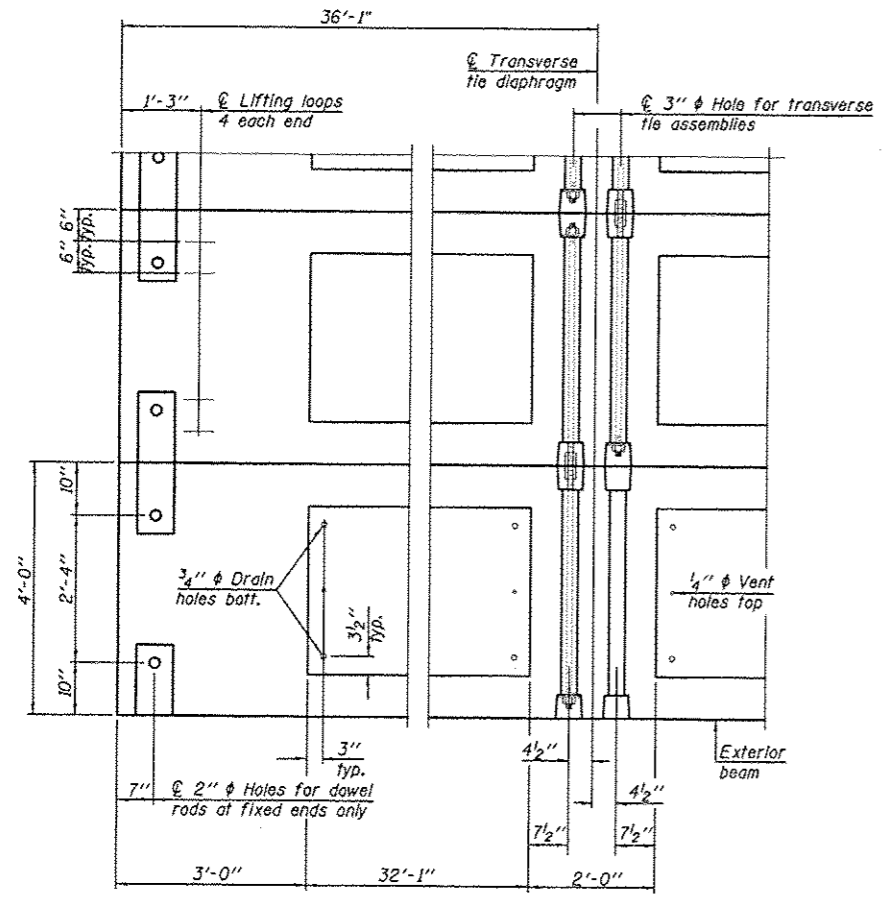
Notes:
 All bearing pads shall be 1" thick.
 Omit holes when using expansion bearings.
 Expansion bearing pad shall be bonded to the substructure.



TYPICAL TRANSVERSE TIE ASSEMBLY



BAR S(E)
BAR S₄(E)
BAR U(E)
BAR S₄(E)
BAR U₄(E)

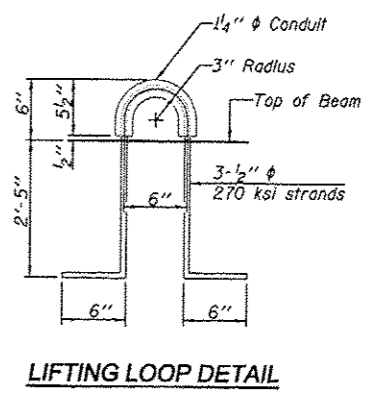


PLAN VIEW

Note: Connect beams in pairs with the transverse tie configuration shown.

NOTES

Prestressing steel shall be uncoated high strength, low relaxation 7-wire strand, Grade 270. The nominal diameter shall be 1/2" and the nominal cross-sectional area shall be 0.153 sq. in.
 The 1" diameter rods in the transverse tie assembly shall be tightened to a snug fit and the threads set. Pockets on exterior faces of bridge shall be filled with grout after transverse tie assembly is in place.
 Reinforcement bars shall conform to ASTM A 706, Grade 60. (See Special Provisions).
 Two 1/8" fabric adjusting shims of the dimensions of the exterior bearing pad shall be provided for each bearing pad location.
 A minimum 2 1/2" diameter lifting pin shall be used to engage the lifting loops during handling.
 Corrosion inhibitor, per Article 1020.05(b)(12) and 1021.06 of the Standard Specifications, shall be used in the concrete for precast prestressed concrete deck beams.
 Compressive strength of prestressed concrete, f'c, shall be 6000 psi.
 Compressive strength of prestressed concrete at release, f'ci, shall be 5000 psi.



LIFTING LOOP DETAIL

BILL OF MATERIAL

Precast Prestressed Conc. Deck Bms. (33" depth)	Sq. Ft.	2021
---	---------	------

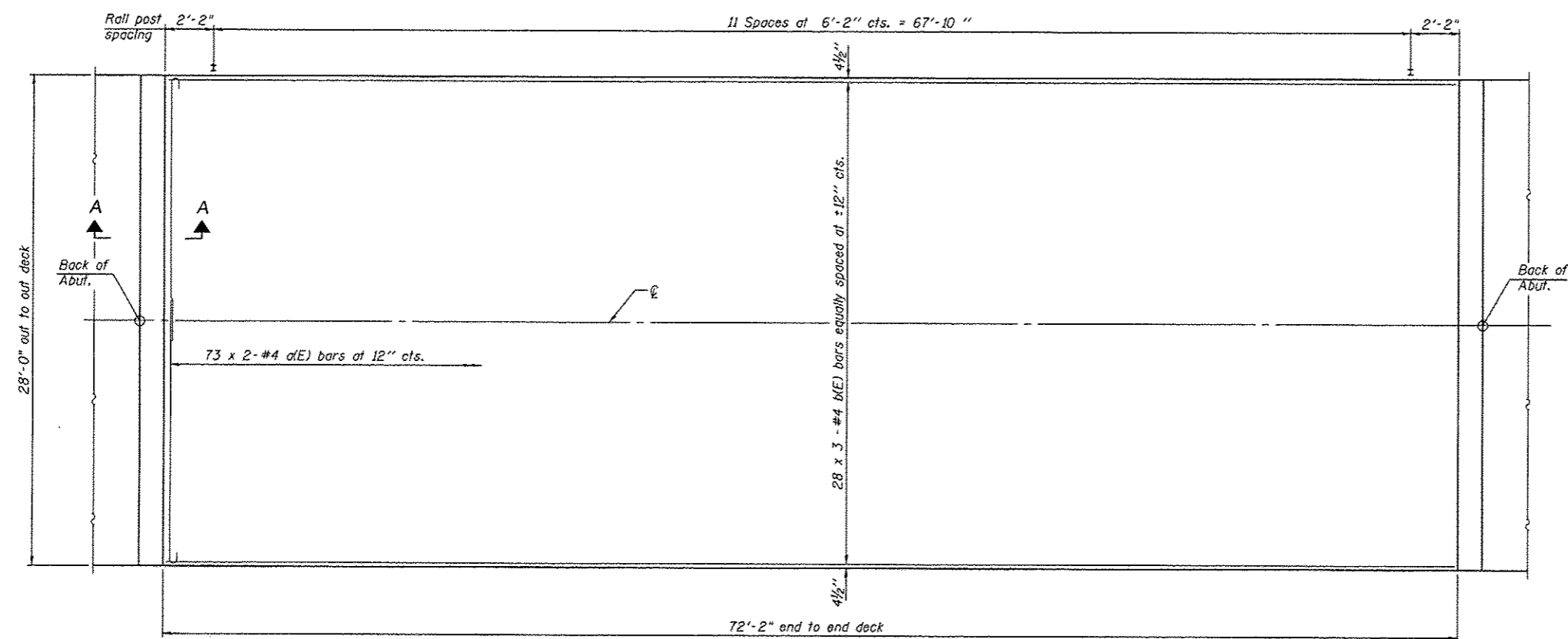
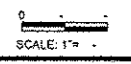
PD-3348-OD 7-1-10

S.N. 089-3287
 33" X 48" PPC DECK BEAMS
 CONCRETE OVERLAY DETAILS
 SECTION 12-08122-00-BR
 STEPHENSON COUNTY

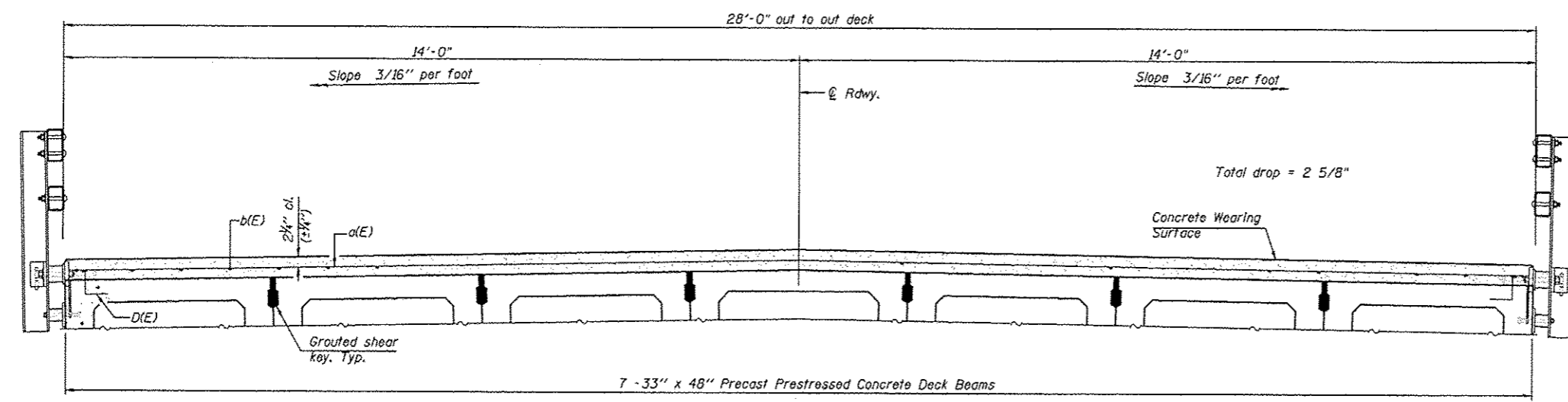
FAS ROUTE NO.	SEC	COUNTY	TOTAL SHEETS	SHEET NO.
-	*	STEPHENSON	16	7

ILLINOIS PROJECT BROS-0177(044)

* 12-08122-00-BR
CONTRACT NO. 85590



PLAN



CROSS SECTION
(Looking EAST)

SECTION A-A

Notes:
All concrete wearing surfaces shall be placed prior to casting a backwall and/or approach slab.
See sheet 8 of 16 for fabric bearing pad details.

Notes:
See sheet 8 of 16 for Superstructure Details and Bill of Material.
Bars indicated thus 20 x 2-#4 etc. indicates 20 lines of bars with 2 lengths per line.

MINIMUM BAR LAP
#4 bar = 2'-0"

PDS-S-R34-0 7-1-10

S.N. 089-3287
33" X 48" PPC DECK BEAMS
CONCRETE OVERLAY DETAILS
SECTION 12-08122-00-BR
STEPHENSON COUNTY

NO.	DATE	REVISIONS

DESIGNED BY	CHECKED BY	DATE

wendler
GROUND-BREAKING SOLUTIONS
engineers - surveyors - scientists
www.wendlergs.com ph: 615.288.2261
Illinois Professional Design Firm No. 184-009848

SUPERSTRUCTURE DETAILS
OF
WEST DAMEIER ROAD BRIDGE
FOR
STEPHENSON COUNTY

SHEET TITLE
DETAILS

JOB NUMBER
2120191

DATE
4/01/2013

SHEET NO.
7 of 16

FAS ROUTE NO	SEC	COUNTY	TOTAL SHEETS	SHEET NO
-	*	STEPHENSON	16	8

ILLINOIS PROJECT BROS-0177(044)
 * 12-08122-00-BR
 CONTRACT NO. 85530

SCALE: 1" = 4'

REVISIONS	DATE

DESIGNED BY	
CHECKED BY	
DATE	
PROJECT NO.	
SCALE	

wendler
 CONSULTING SOLUTIONS
 ENGINEERS SURVEYORS & SCIENTISTS
 www.wendlers.com Ph: 815.288.2281
 1800 Professional Design Firm No. 181-000005

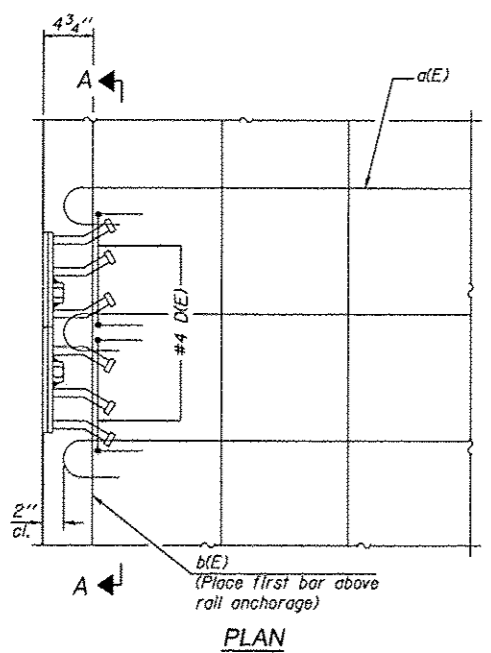
SUPERSTRUCTURE DETAILS
 OF
 WEST DAMEIER ROAD BRIDGE
 FOR
 STEPHENSON COUNTY

SHEET TITLE
DETAILS

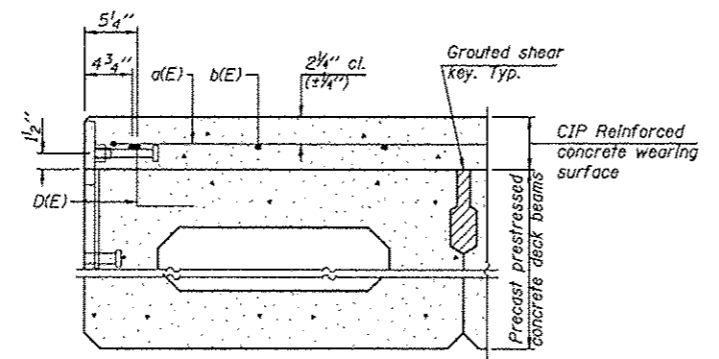
JOB NUMBER
 2120191

DATE
 4/01/2013

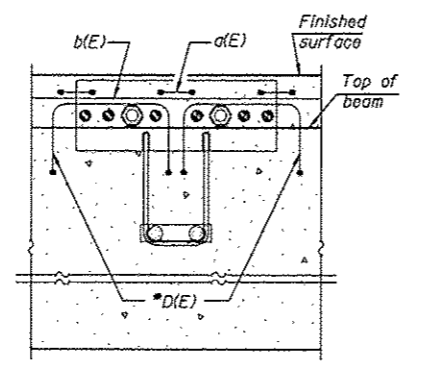
SHEET NO.
8 of 16



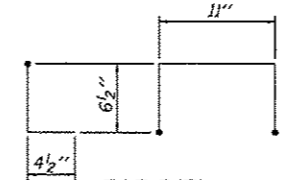
Notes:
 Formwork necessary for the wearing surface may be secured utilizing the bottom rail anchorage inserts and/or additional inserts cast into the beam.



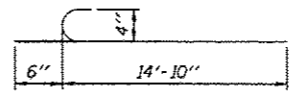
SECTION THRU FASCIA BEAM



SECTION A-A

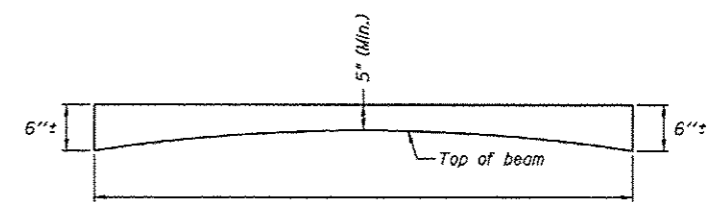


Place 2- #4 D(E) bars in beam at each post location as shown. D(E) bar included in cost of beam.



BAR a(E)

MINIMUM BAR LAP
 #4 bar = 2'-0"



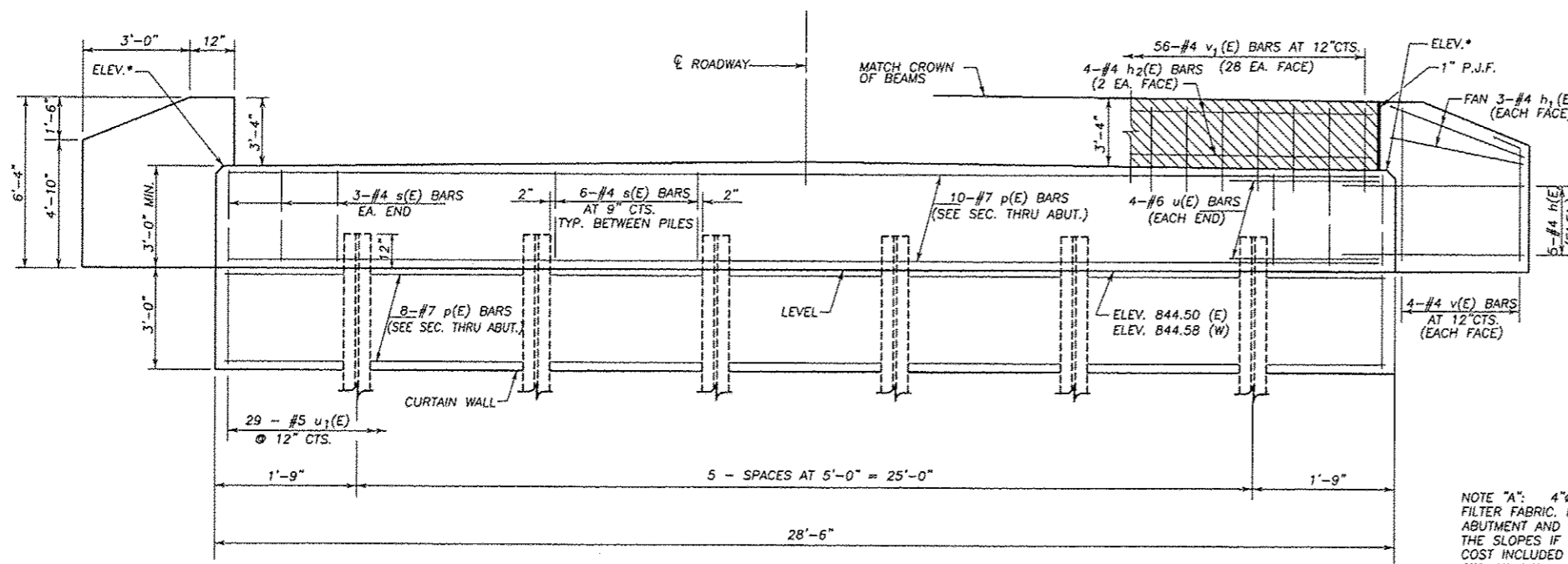
SUPERSTRUCTURE BILL OF MATERIAL

Bar	No.	Size	Length	Shape
a(E)	146	#4	15'-4"	C
b(E)	84	#4	25'-4"	—
Reinforcement Bars, Epoxy Coated			Pound	2920
Concrete Wearing Surface, 5"			Sq. Yd.	224.5

S.N. 089-3287
 33" X 48" PPC DECK BEAMS
 BEAM DETAILS
 SECTION 12-08122-00-BR
 STEPHENSON COUNTY

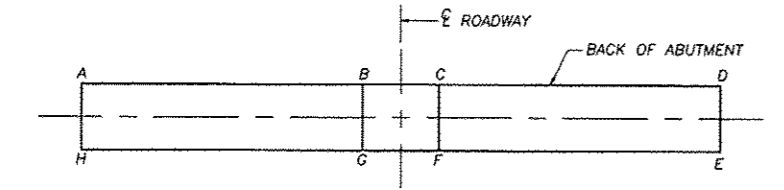
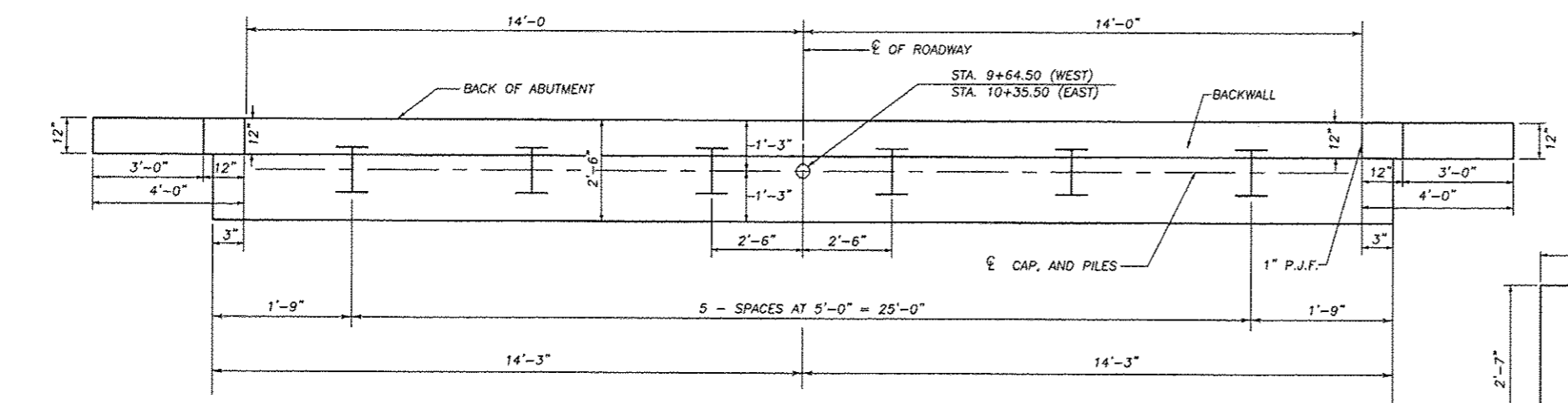
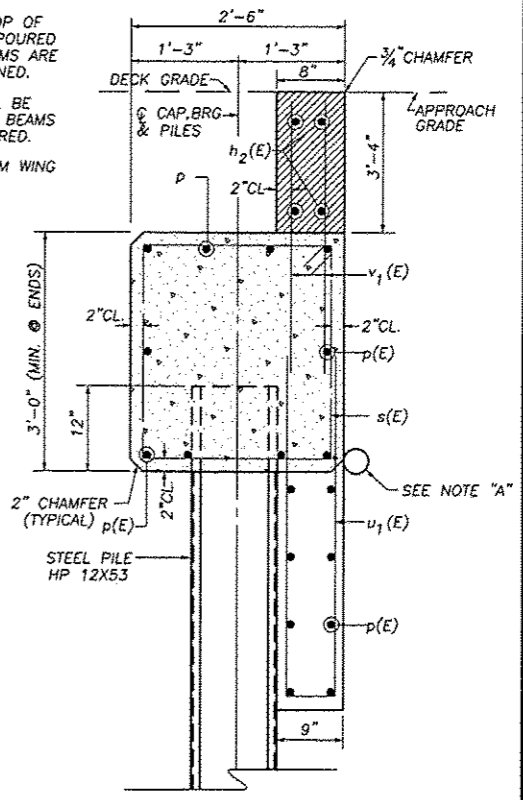
FAS ROUTE NO.	SEC	COUNTY	TOTAL SHEETS	SHEET NO
-	*	STEPHENSON	16	9

ILLINOIS PROJECT BROS-0177(044)
 * 12-08122-00-BR
 CONTRACT NO. 85590

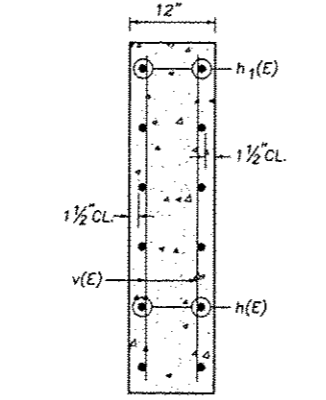


NOTE: WINGWALLS ABOVE TOP OF CAP SHALL NOT BE POURED UNTIL THE DECK BEAMS ARE IN PLACE AND FASTENED.
 HATCHED AREA SHALL BE POURED AFTER DECK BEAMS ARE SET AND ANCHORED.
 WIDTH SHALL BE FROM WING TO WING.

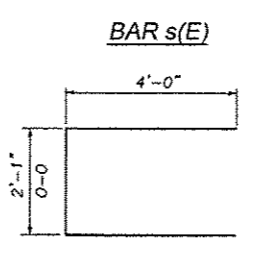
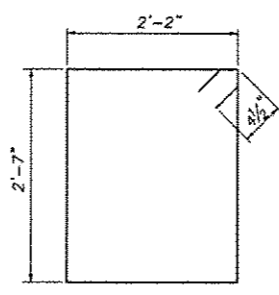
NOTE "A": 4" Ø PIPE UNDERDRAIN IN FILTER FABRIC. FULL WIDTH OF ABUTMENT AND EXTEND TO INTERSECT THE SLOPES IF FRONT OF THE CAP. COST INCLUDED WITH CONCRETE STRUCTURES.



ABUTMENT	A	B	C	D	E	F	G	H
W	847.55	847.74	847.74	847.55	847.55	847.74	847.74	847.55
ABUTMENT	A	B	C	D	E	F	G	H
E	847.74	847.66	847.66	847.74	847.74	847.66	847.66	847.74



PILE DATA INFORMATION
 TYPE AND SIZE: STEEL PILES HP 12X53
 NOMINAL REQUIRED BEARING: REFUSAL
 NO. REQUIRED : 5+1 TEST PILE EACH ABUTMENT
 EST. LENGTH: 52' - W. ABUT. ; 59' - E. ABUT.
 MIN. PENETRATION 20' BELOW S.B.E.
 STEEL PILES SHALL BE ACCORDING TO ASTM A 252 GRADE 3



BILL OF MATERIAL		2 ABUTMENTS		
BAR	NO.	SIZE	LENGTH	SHAPE
h(E)	40	#4	6'-0"	—
h ₁ (E)	24	#4	3'-8"	—
h ₂ (E)	8	#4	27'-6"	—
p(E)	36	#7	28'-3"	—
s(E)	72	#4	10'-3"	□
u(E)	16	#6	10'-1"	U
u ₁ (E)	58	#5	8'-10"	U
v(E)	32	#4	6'-0"	—
v ₁ (E)	112	#4	5'-2"	—
CONCRETE STRUCTURES		CU. YD.	29.2	
REINFORCEMENT BARS (EPOXY CTD.)		POUND	4230	
STEEL PILE HP 12X53		FOOT	555	
DRIVING PILES		FOOT	555	
TEST PILE STEEL PILE HP 12X53		EACH	2	

S.N. 089-3287
 SUBSTRUCTURE ABUTMENTS
 SECTION 12-08122-00-BR
 STEPHENSON COUNTY

REVISIONS	DATE

REVISION BY	DATE

wendler
 wendler engineering services, inc.
 engineers - surveyors - architects
 www.wendlereng.com ph: 815.238.2261
 Illinois Professional Design Firm No. 184-000948

SUBSTRUCTURE ABUTMENTS OF WEST DAMEIER ROAD BRIDGE FOR STEPHENSON COUNTY

SHEET TITLE
ABUTMENTS

JOB NUMBER	2120191
------------	---------

DATE	4/01/2013
------	-----------

SHEET NO.

FAS ROUTE NO.	SEC.	COUNTY	TOTAL SHEETS	SHEET NO.
		STEPHENSON	16	10
ILLINOIS PROJECT BROS-0177(044)				
* 12-08122-00-BR				
CONTRACT NO. 85590				

SCALE: 1" = 1'-0"

REVISIONS	DATE

DESIGNER	DRAWN BY	CHECKED BY	APPROVED BY

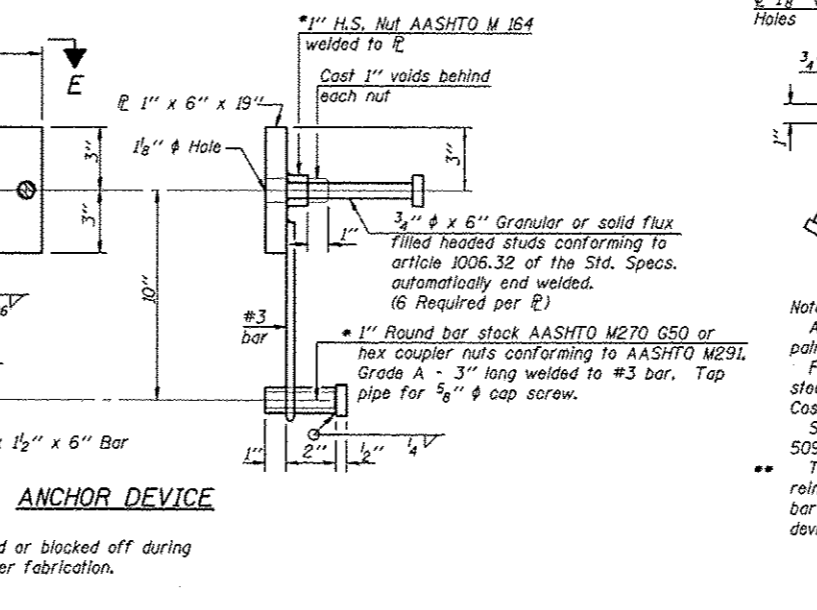
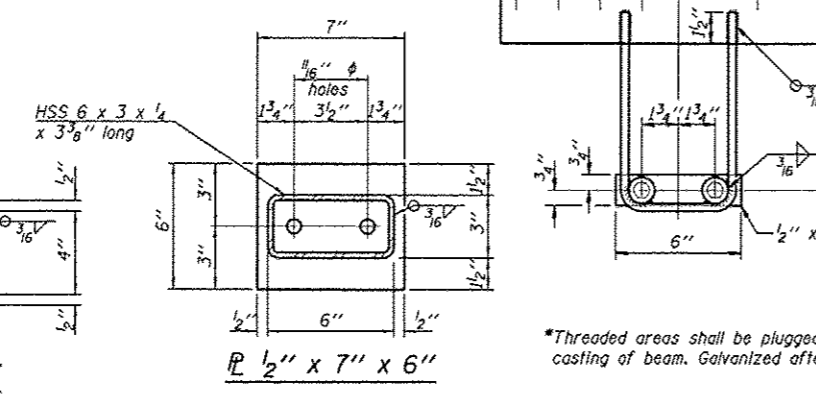
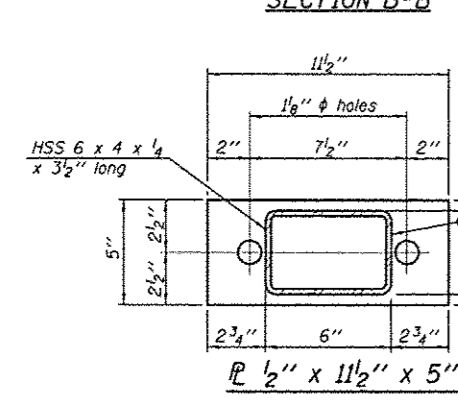
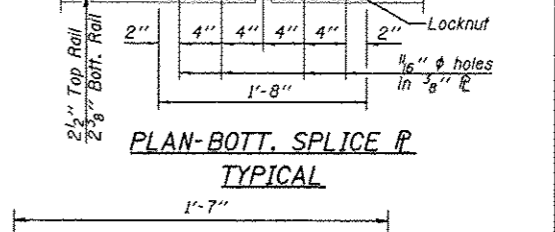
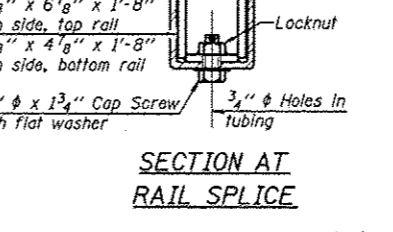
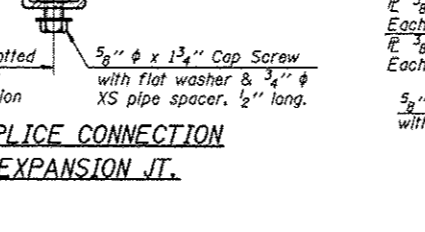
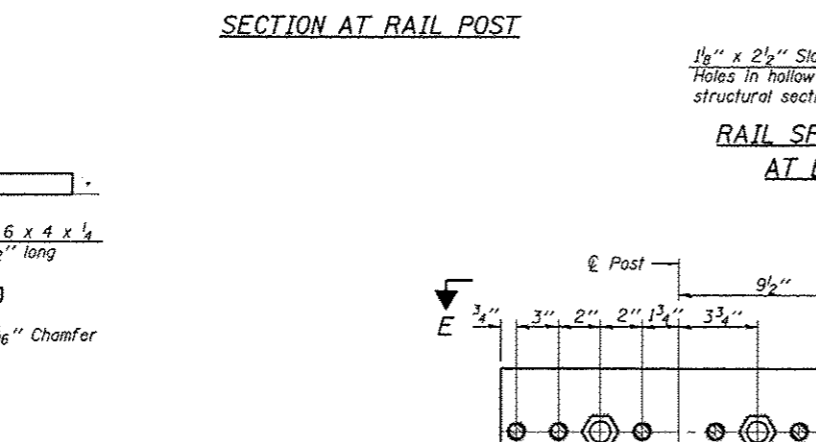
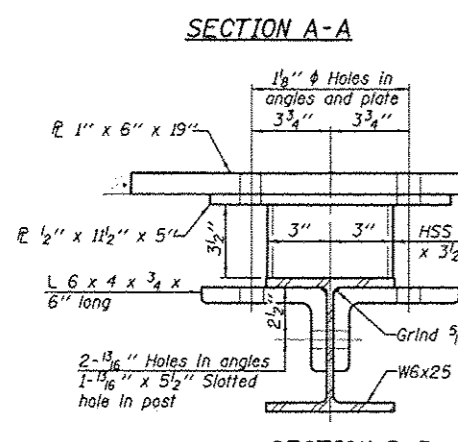
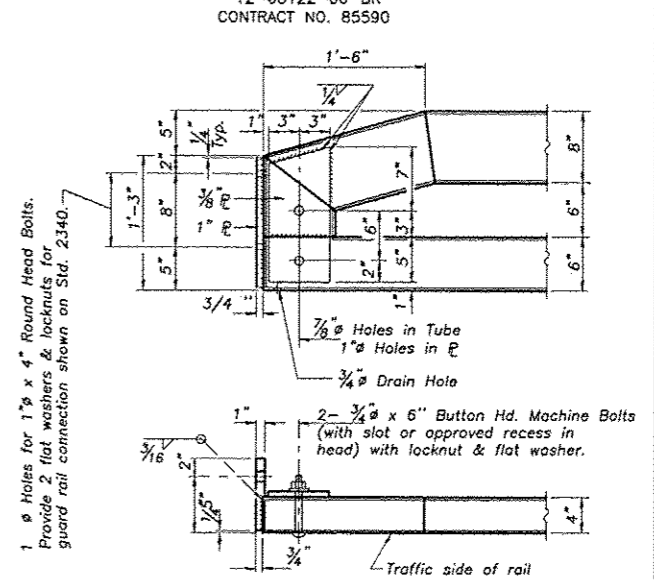
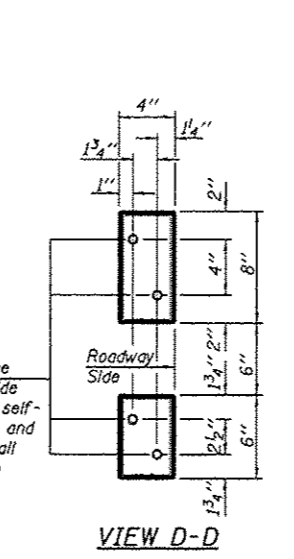
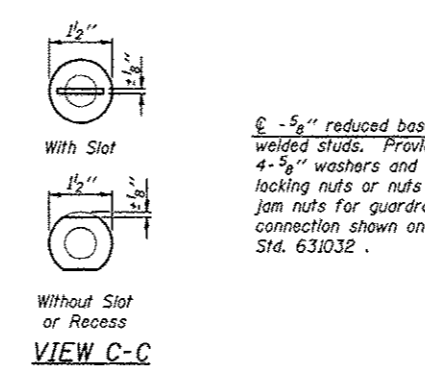
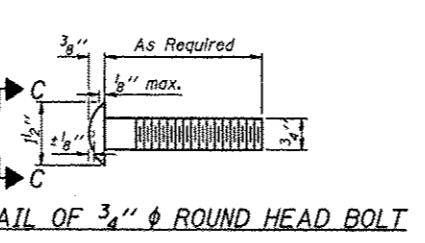
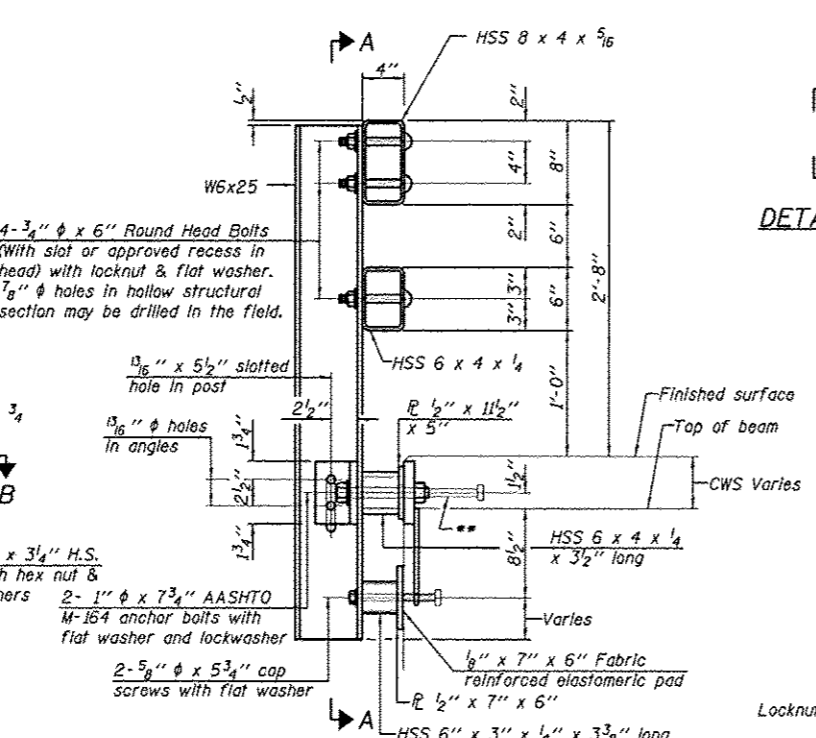
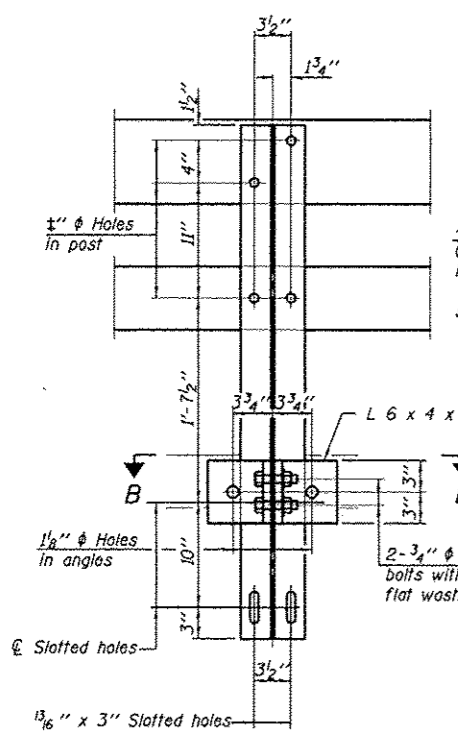
wendler

GROUNDWORKING SOLUTIONS
engineers - surveyors - scientists
www.wendlergs.com ph: 815.288.2261
Illinois Professional Design Firm No. 194-000649

TYPE SM RAIL DETAILS
OF
WEST DAMEIER ROAD BRIDGE
FOR
STEPHENSON COUNTY

RAIL

SHEET TITLE	RAIL
JOB NUMBER	2120191
DATE	4/01/2013
SHEET NO.	10 of 16



Notes:

- All field drilled holes shall be coated with an approved zinc rich paint before erection.
- For multi-span bridges, sufficient 1/4" x 6" x 1'-2" galvanized steel shims shall be provided to align rail between adjacent spans. Cost included with Steel Railing, Type SM.
- Steel rail elements shall be galvanized according to Article 509.05 of the Standard Specifications.
- The studs of the anchor devices shall be placed below the top reinforcement bars and the outermost longitudinal reinforcement bar shall be placed directly above the studs of the rail post anchor device.

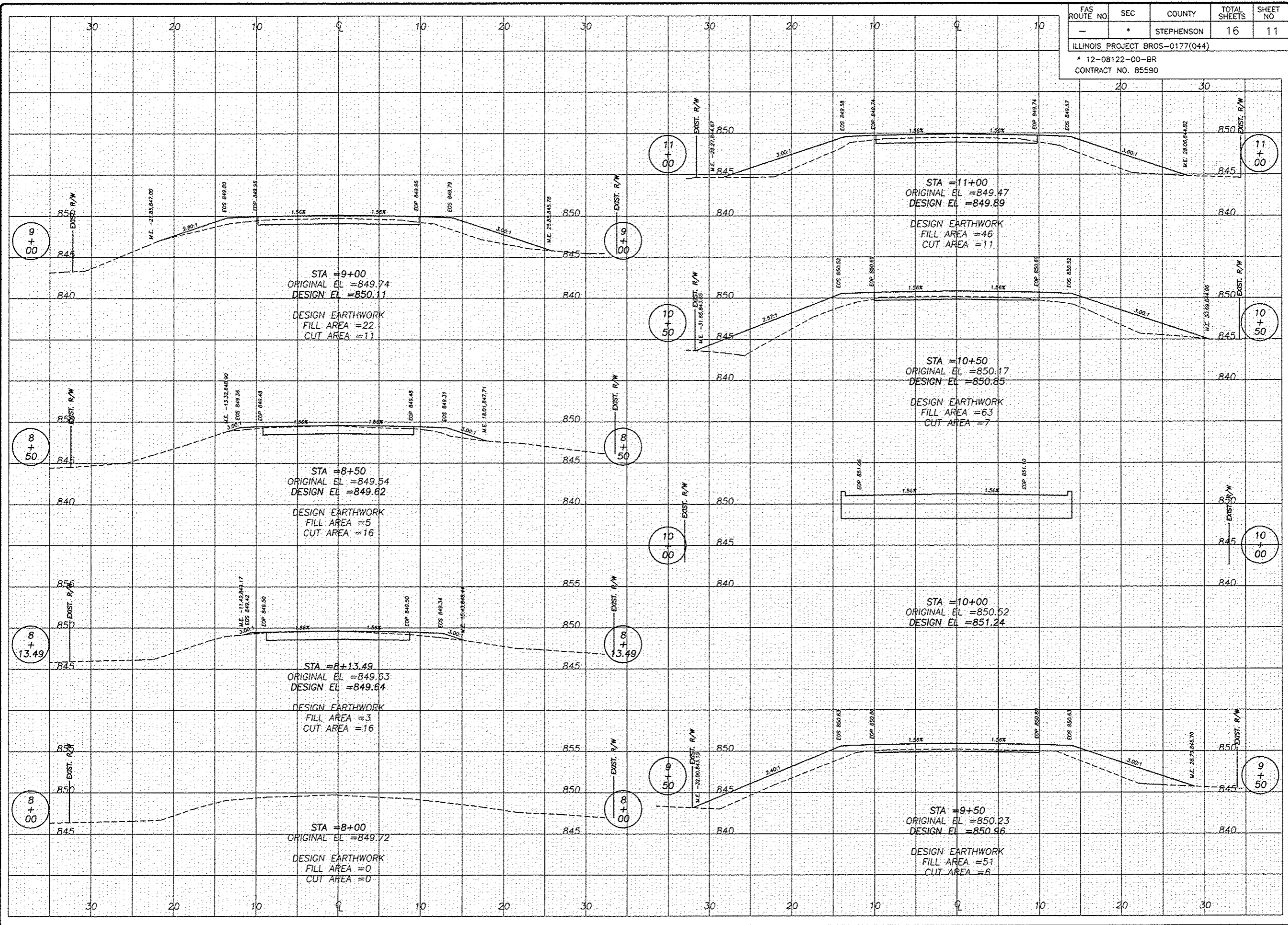
R-34CWS 7-1-10 (6'-3" Maximum Post Spacing) (15" minimum to 7 7/8" maximum CWS thickness)

BILL OF MATERIAL

Item	Unit	Quantity
Steel Railing, Type SM	Foot	146

S.N. 089-3287
TYPE SM RAIL DETAILS
SECTION 12-08122-00-BR
STEPHENSON COUNTY

FAS ROUTE NO	SEC	COUNTY	TOTAL SHEETS	SHEET NO
-	*	STEPHENSON	16	11
ILLINOIS PROJECT BROS-0177(044)				
* 12-08122-00-BR				
CONTRACT NO. 85590				



REVISIONS	
NO.	DESCRIPTION

DESIGNED BY	
DRAWN BY	
CHECKED BY	
DATE	

wendler
 wendler engineering services, inc.
 GROUND-BREAKING SOLUTIONS
 engineers - surveyors - scientists
 www.wendlergs.com ph: 612-286-2281
 Project Professional Design Firm No. 14-000004

INFRASTRUCTURE IMPROVEMENTS
 OF
 BRIDGE REPLACEMENT - DAMEIER ROAD
 FOR
 STEPHENSON COUNTY

SHEET TITLE
**ROADWAY
 CROSS
 SECTIONS**

JOB NUMBER
 2120191

DATE
 04/10/2013


SHEET NO.
11 of 16

© 2013 WENDLER ENGINEERING SERVICES, INC. ALL RIGHTS RESERVED.

FAS ROUTE NO	SEC	COUNTY	TOTAL SHEETS	SHEET NO
-	*	STEPHENSON	16	12
ILLINOIS PROJECT BROS-0177(044)				
* 12-08122-00-BR				
CONTRACT NO. 85590				

REVISIONS	
NO.	DESCRIPTION

DESIGNED BY	DATE
DRAWN BY	DATE
CHECKED BY	DATE
IN CHARGE	DATE
REGISTERED PROFESSIONAL ENGINEER	DATE
REGISTERED PROFESSIONAL SURVEYOR	DATE
REGISTERED PROFESSIONAL ROADWAY ENGINEER	DATE



wendler
 wendler engineering services, inc.
 GEOTECHNICAL SOLUTIONS
 ENGINEERS - SURVEYORS - SCIENTISTS
 www.wendlergs.com ph: 615.238.2261
 Project Professional Design Firm No. 184-000648

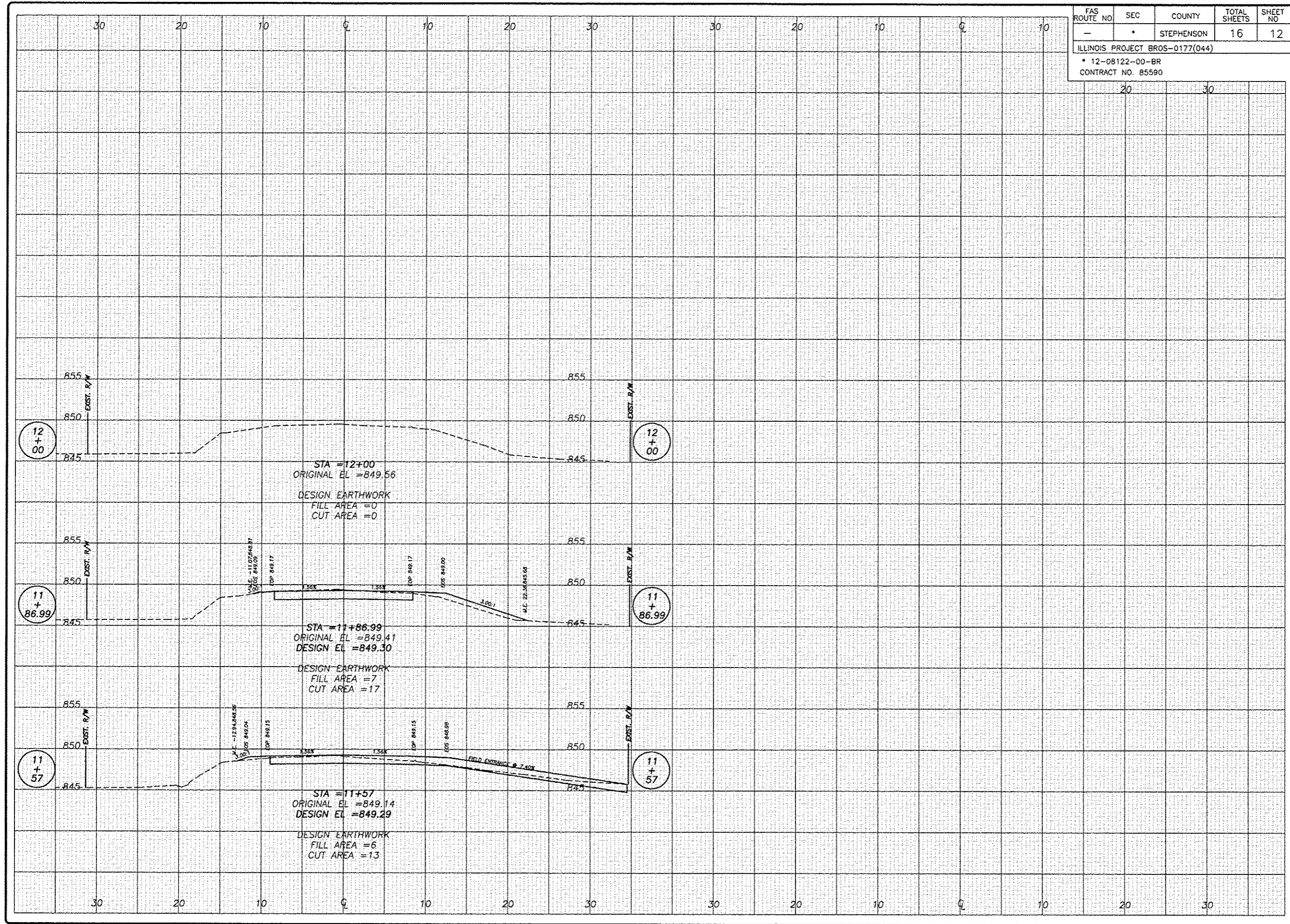
INFRASTRUCTURE IMPROVEMENTS
 OF
 BRIDGE REPLACEMENT - DAMEIER ROAD
 FOR
 STEPHENSON COUNTY

SHEET TITLE
 ROADWAY
 CROSS
 SECTIONS

JOB NUMBER
 2120191

DATE
 03/28/2013

SHEET NO.
 12 of 16



1" = 20' HORIZONTAL SCALE
 1" = 2' VERTICAL SCALE

Midwest Testing Services, Inc.
 3705 Progress Blvd.
 Peru, IL 61354

BORING LOG
 Sheet 1 of 3

Phone: 815-223-6696
 Fax: 815-223-6659
 e-mail: mts37@comcast.net

Client: Wendler Engineering
 Project Name: W. Dameier Rd Section 12-08122-00-BR
 Project Site: Kent Twp. Stephenson County, IL.

Boring No. B-1
 Surface Elev. 850.57
 Auger Depth 62.5' Rotary Depth NA
 Start Date 09/08/12 Finish Date 09/08/12

Location: East Abutment 9ft. South of Centerline of Roadway
 Station: 10+29 9' RT

(DEPTH) ELEV.	DESCRIPTION OF MATERIALS	Graphic Log	Depth in feet	SAMPLES						DRILLED BY		REMARKS
				Sample No.	Sample Type	Qu (TSF)	N Value (Blows)	Bulge / Shear	Moisture (%)	Dry Density (PCF)	Randy Safranski	
850.57												
849.57	Aggregate		1									
848.57			2									
847.57			3	1	SS	1.0	8	B	19			
846.57	Medium Stiff Black/Brown/Gray Silty Clay Fill		4									
845.57			5									
844.57			6	2	SS	1.0	7	B/S	18			
843.57			7									
842.57			8	3	SS	1.0	7	B	19			
841.57			9									
840.57	Loose Brown Gravely Loam		10									
839.57			11									
838.57	Medium Stiff Gray Silty Clay		12									
837.57			13	5	SS	---	24	---	8			
836.57	Medium Dense Brown/Gray Gravel & Limestone Fragments		14									
835.57			15									
834.57			16	6	SS	---	29	---	8			
833.57			17									
832.57			18	7	SS	2.3	17	S	16			
831.57	Very Stiff Gray Clayey Silt		19									
830.57			20	8	SS	2.5	26	S	17			

Groundwater Data: Static water level after auger removal 12' below top of ground.
 Comments:

Midwest Testing Services, Inc.
 3705 Progress Blvd.
 Peru, IL 61354

BORING LOG
 Sheet 2 of 3

Phone: 815-223-6696
 Fax: 815-223-6659
 e-mail: mts37@comcast.net

Client: Wendler Engineering
 Project Name: W. Dameier Rd Section 12-08122-00-BR
 Project Site: Kent Twp. Stephenson County, IL.

Boring No. B-1
 Surface Elev. 850.57
 Auger Depth 62.5' Rotary Depth NA
 Start Date 09/08/12 Finish Date 09/08/12

Location: East Abutment 9ft. South of Centerline of Roadway
 Station: 10+29 9' RT

(DEPTH) ELEV.	DESCRIPTION OF MATERIALS	Graphic Log	Depth in feet	SAMPLES						DRILLED BY		REMARKS
				Sample No.	Sample Type	Qu (TSF)	N Value (Blows)	Bulge / Shear	Moisture (%)	Dry Density (PCF)	Randy Safranski	
829.57												
828.57			22									
827.57	Medium Dense Gray Silt & Fine Sand		23	9	SS	---	25	---	16			
826.57			24									
825.57			25									
824.57			26	10	SS	---	30	---	18			
823.57			27									
822.57			28									
821.57	Very Stiff Gray Silty Clay		29									
820.57			30									
819.57			31	11	SS	3.5	30	B	17			
818.57			32									
817.57			33									
816.57			34									
815.57			35									
814.57			36	12	SS	---	15	---	24			
813.57	Medium Dense Gray Silt & Fine Sand with Clay Seams		37									
812.57			38									
811.57			39									
810.57			40									
809.57			41	13	SS	---	24	---	20			

Groundwater Data: Static water level after auger removal 12' below top of ground.
 Comments:

REVISIONS	DATE

DESIGNED BY	SAB
DRAWN BY	DJY
IN CHARGE	RS
BORINGS	
WRITTEN BY	

wendler
 GROUND-BREAKING SOLUTIONS
 engineers • surveyors • scientists
 www.wendlereng.com ph: 815.288.2281
 Illinois Professional Design Firm No. 164-000688

SOIL BORINGS
 OF
 DAMEIER ROAD
 FOR
 STEPHENSON COUNTY

SHEET TITLE

SOIL BORINGS

JOB NUMBER
2120191

DATE
03/22/2013

SHEET NO.
13 of 16

SCHEDULE OF QUANTITIES
 TYPICAL SECTIONS
 SECTION 12-08122-00-BR
 STEPHENSON COUNTY

FAS ROUTE NO	SEC	COUNTY	TOTAL SHEETS	SHEET NO
-	*	STEPHENSON	16	14
ILLINOIS PROJECT BROS-0177(044)				
* 12-08122-00-BR				
CONTRACT NO. 85590				

SCALE: 1"=

Midwest Testing Services, Inc.
3705 Progress Blvd.
Peru, IL 61354

BORING LOG
Sheet 3 of 3
Phone: 815-223-6696
Fax: 815-223-6659
e-mail: mts37@comcast.net

Client: Wendler Engineering
Project Name: W. Damcior Rd Section 12-08122-00-BR
Project Site: Kent Twp. Stephenson County, IL.

Boring No. B-1
Surface Elev. 850.57
Auger Depth 62.5' Rotary Depth NA
Start Date 09/08/12 Finish Date 09/08/12

Location: East Abutment 9ft. South of Centerline of Roadway
Station: 10+29 9' RT

(DEPTH) ELEV.	DESCRIPTION OF MATERIALS	Graphic Log	Depth in feet	SAMPLES					DRILLED BY		REMARKS
				Sample No.	Sample Type	Qu (TSF)	N Value (Blows)	Bulge / Shear	Moisture (%)	Dry Density (PCF)	
808.57											
807.57			43								
806.57			44								
805.57	Medium Dense Gray Silt & Fine Sand with Clay Seams		45	14	SS	---	30	---	18		
804.57			46								
803.57			47								
802.57			48								
801.57			49								
800.57			50	15	SS	---	32	---	21		
799.57			51								
798.57	Dense Gray Silt & Fine Sand with Clay Seams		52								
797.57			53								
796.57			54								
795.57			55	16	SS	---	34	---	21		
794.57			56								
793.57			57								
792.57			58								
791.57			59								
790.57	Very Stiff Gray Clay		60	17	SS	3.6	30	B	22		
789.57			61								
788.57	Weathered Sandstone Auger Refusal (Sandstone)		62								

Groundwater Data: Static water level after auger removal 12' below top of ground.
Comments:

Midwest Testing Services, Inc.
3705 Progress Blvd.
Peru, IL 61354

BORING LOG
Sheet 1 of 4
Phone: 815-223-6696
Fax: 815-223-6659
e-mail: mts37@comcast.net

Client: Wendler Engineering
Project Name: W. Damcior Rd Section 12-08122-00-BR
Project Site: Kent Twp. Stephenson County, IL.

Boring No. B-2
Surface Elev. 850.65
Auger Depth 66' Rotary Depth NA
Start Date 09/08/12 Finish Date 09/08/12

Location: West Abutment 6ft. South of Centerline of Roadway
Station: 9+67 6' RT

(DEPTH) ELEV.	DESCRIPTION OF MATERIALS	Graphic Log	Depth in feet	SAMPLES					DRILLED BY		REMARKS
				Sample No.	Sample Type	Qu (TSF)	N Value (Blows)	Bulge / Shear	Moisture (%)	Dry Density (PCF)	
850.65											
849.65	Aggregate		1								
848.65			2								
847.65	Medium Stiff Black/Brown/Gray Silty Clay Fill		3	1	SS	1.0	7	B	19		
846.65			4								
845.65			5								
844.65			6	2	SS	1.0	7	B	20		
843.65			7								
842.65			8	3	SS	---	7	---	19		
841.65			9								
840.65	Loose Brown Gravelly Loam		10	4	SS	---	6	---	19		
839.65			11								
838.65			12								
837.65	Medium Dense Brown/Gray Gravel & Limestone Fragments		13	5	SS	---	18	---	9		
836.65			14								
835.65			15								
834.65			16	6	SS	---	17	---	10		
833.65			17								
832.65	Very Stiff Gray Clayey Silt		18	7	SS	2.2	16	B/S	17		
831.65			19								
830.65	Very Stiff Gray Silt & Fine Sand with Clay Seams		20	8	SS	2.3	18	B/S	15		

Groundwater Data: Static water level after auger removal 12' below top of ground.
Comments:

DATE	REVISION

DESIGNED BY	
DRAWN BY	
CHECKED BY	
DATE	

wendler
GROUNDREPAIRING SOLUTIONS
engineers - architects - geotechnical
www.wendlereng.com ph: 815.223.2261
1000 Professional Design Firm No. 194-000045

SOIL BORINGS OF DAMEIER ROAD FOR STEPHENSON COUNTY

SHEET TITLE

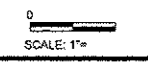
SOIL BORINGS

JOB NUMBER 2120191

DATE 03/22/2013

SHEET NO. 14 of 16

SCHEDULE OF QUANTITIES
TYPICAL SECTIONS
SECTION 12-08122-00-BR
STEPHENSON COUNTY



Midwest Testing Services, Inc.
 3705 Progress Blvd.
 Peru, IL 61354

BORING LOG
 Sheet 2 of 4
 Phone: 815-223-6696
 Fax: 815-223-6659
 e-mail: midwest.07@insightbb.com

Client: Wendler Engineering
 Project Name: W. Dameier Rd Section 12-08122-00-BR
 Project Site: Kent Twp. Stephenson County, IL.

Boring No. B-2
 Surface Elev. 850.65
 Auger Depth 66' Rotary Depth NA
 Start Date 09/08/12 Finish Date 09/08/12

Location: West Abutment 6ft. South of Centerline of Roadway
 Station: 9+67 6' RT

(DEPTH) ELEV.	DESCRIPTION OF MATERIALS	Graphic Log	Depth in feet	SAMPLES						DRILLED BY		REMARKS
				Sample No.	Sample Type	Qu (TSF)	N Value (Blows)	Bulge / Shear	Moisture (%)	Dry Density (PCF)	Randy Safranski Diedrich D-120	
829.65												
828.65		3	22									
827.65	Medium Dense Gray Silt & Fine Sand		23	9	SS	---	19	---	14			
826.65			24									
825.65		3	25									
824.65			26	10	SS	---	26	---	13			
823.65			27									
822.65			28									
821.65	Very Stiff Gray Silt & Fine Sand with Clay Seams		29									
820.65			30									
819.65			31	11	SS	---	29	---	15			
818.65			32									
817.65			33									
816.65	Medium Dense Gray Fine Sand		34									
815.65			35									
814.65			36	12	SS	---	17	---	9			
813.65			37									
812.65			38									
811.65			39									
810.65	Medium Dense Gray Silt & Fine Sand with Clay Seams		40									
809.65			41	13	SS	---	26	---	19			

Groundwater Data: Static water level after auger removal 12' below top of ground.
 Comments:

Midwest Testing Services, Inc.
 3705 Progress Blvd.
 Peru, IL 61354

BORING LOG
 Sheet 3 of 4
 Phone: 815-223-6696
 Fax: 815-223-6659
 e-mail: midwest.07@insightbb.com

Client: Wendler Engineering
 Project Name: W. Dameier Rd Section 12-08122-00-BR
 Project Site: Kent Twp. Stephenson County, IL.

Boring No. B-2
 Surface Elev. 850.65
 Auger Depth 66' Rotary Depth NA
 Start Date 09/08/12 Finish Date 09/08/12

Location: West Abutment 6ft. South of Centerline of Roadway
 Station: 9+67 6' RT

(DEPTH) ELEV.	DESCRIPTION OF MATERIALS	Graphic Log	Depth in feet	SAMPLES						DRILLED BY		REMARKS
				Sample No.	Sample Type	Qu (TSF)	N Value (Blows)	Bulge / Shear	Moisture (%)	Dry Density (PCF)	Randy Safranski Diedrich D-120	
808.65												
807.65			43									
806.65			44									
805.65		5	45	14	SS	---	30	---	17			
804.65			46									
803.65			47									
802.65			48									
801.65			49									
800.65	Medium Dense Gray Silt & Fine Sand with Clay Seams		50									
799.65			51	15	SS	---	30	---	17			
798.65			52									
797.65			53									
796.65			54									
795.65			55									
794.65		7	56	16	SS	---	32	---	18			
793.65			57									
792.65			58									
791.65			59									
790.65	Very Stiff Gray Clay		60									
789.65			61	17	SS	3.4	26	B	23			
788.65	Very Dense Weathered Sandstone		62									

Groundwater Data: Static water level after auger removal 12' below top of ground.
 Comments:

REVISIONS	DATE

DESIGNED BY	SAF
DRAWN BY	BJA
CHECKED BY	
BORED BY	
SUPERVISOR	

wendler
 GROUND-BREAKING SOLUTIONS
 engineers - surveyors - scientists
 www.wendlereng.com ph: 815.288.2261
 #104 Professional Design Firm No. 164-000848

SOIL BORINGS OF DAMEIER ROAD FOR STEPHENSON COUNTY

SHEET TITLE

SOIL BORINGS

JOB NUMBER 2120191

DATE 03/22/2013

SHEET NO.

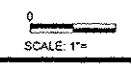
15 of 16

SCHEDULE OF QUANTITIES
 TYPICAL SECTIONS
 SECTION 12-08122-00-BR
 STEPHENSON COUNTY

FAS ROUTE NO.	SEC	COUNTY	TOTAL SHEETS	SHEET NO.
-	*	STEPHENSON	16	16

ILLINOIS PROJECT BROS-0177(044)

* 12-08122-00-BR
CONTRACT NO. 85590



Midwest Testing Services, Inc.
3705 Progress Blvd.
Peru, IL 61354

BORING LOG
Sheet 4 of 4
Phone: 815-223-6696
Fax: 815-223-6659
e-mail: midwest.07@insightbb.com

Client: Wendler Engineering
Project Name: W. Dameier Rd Section 12-08122-00-BR
Project Site: Kent Twp. Stephenson County, IL.

Boring No. B-2
Surface Elev. 850.65
Auger Depth 66' Rotary Depth NA
Start Date 09/08/12 Finish Date 09/08/12

Location: West Abutment 6ft. South of Centerline of Roadway
Station: 9+67 6' RT

(DEPTH) ELEV.	DESCRIPTION OF MATERIALS	Graphic Log	Depth in feet	SAMPLES						DRILLED BY		REMARKS									
				Sample No.	Sample Type	Qu (TSF)	N Value (Blows)	Bulge / Shear	Moisture (%)	Dry Density (PCF)											
787.65																					
786.65	Very Dense Weathered Sandstone		64																		
785.65			65																		
784.65			66	18	SS	---	50 6%	---	9												
783.65	Bottom of Boring		67																		
782.65			68																		
781.65			69																		
780.65			70																		
779.65			71																		
778.65			72																		
777.65			73																		
776.65			74																		
775.65			75																		
774.65			76																		
773.65			77																		
772.65			78																		
771.65			79																		
770.65			80																		
769.65			81																		
768.65			82																		
767.65			83																		

Groundwater Data: Static water level after auger removal 12' below top of ground.
Comments:

REVISIONS	DATE

DESIGNED BY	
CHECKED BY	
DATE	
PROJECT NO.	
DATE PLOTTED	
SCALE	

SOIL BORINGS OF DAMEIER ROAD FOR STEPHENSON COUNTY

SHEET TITLE
SOIL BORINGS

JOB NUMBER
2120191

DATE
03/22/2013

SHEET NO.
16 of 16

SCHEDULE OF QUANTITIES
TYPICAL SECTIONS
SECTION 12-08122-00-BR
STEPHENSON COUNTY