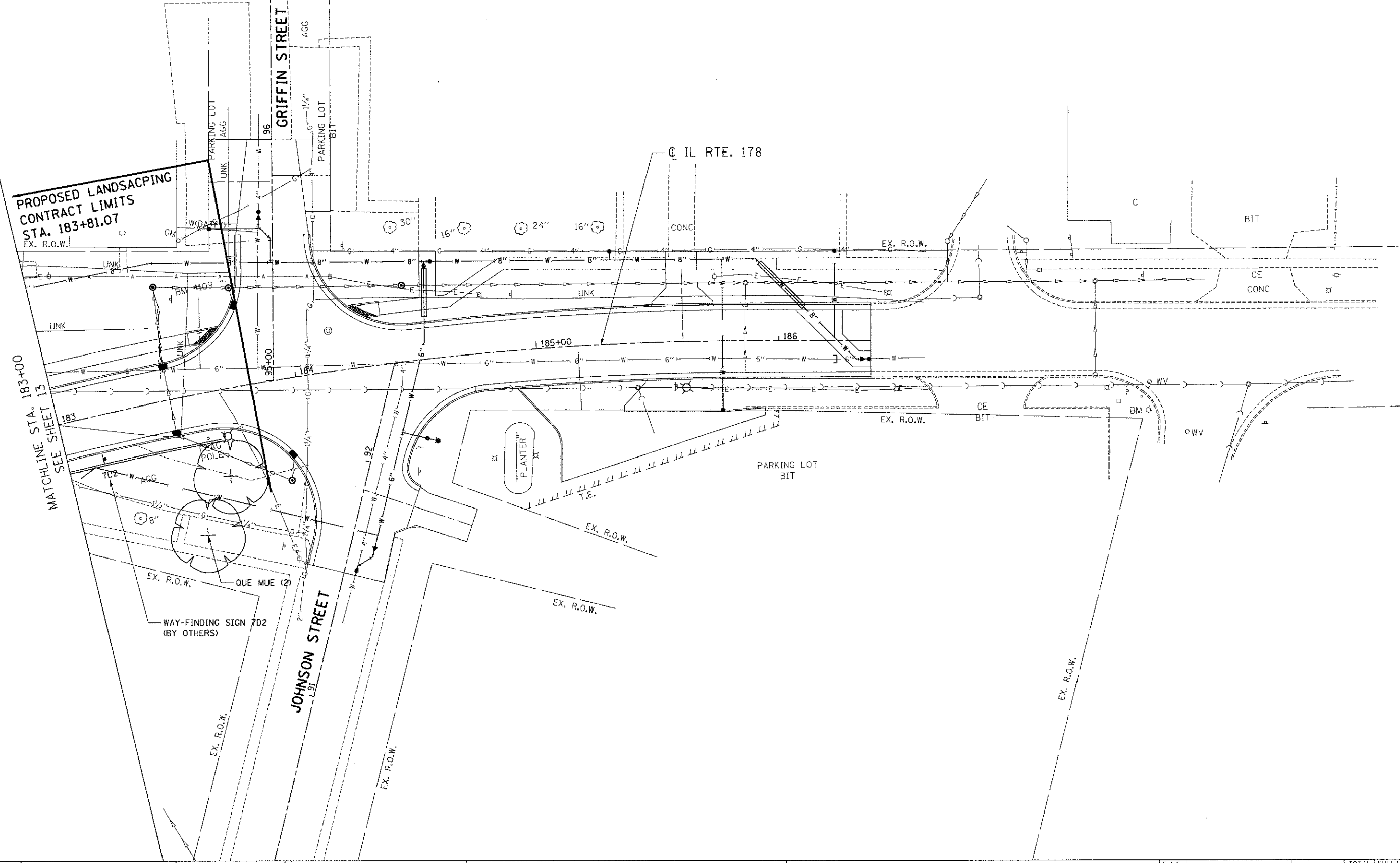




**PROPOSED LANDSCAPING
CONTRACT LIMITS
STA. 183+81.07**
EX. R.O.W.

**MATCHLINE STA. 183+00
SEE SHEET 13**



FILE NAME = ...
 USER NAME = #USER#
 DESIGNED - JM
 DRAWN - MDN
 CHECKED - JB
 DATE - 04/05/13
 REVISED -
 REVISED -
 REVISED -
 REVISED -
 STATE OF ILLINOIS
 DEPARTMENT OF TRANSPORTATION
 PROPOSED LANDSCAPING PLANS 5
 SCALE: 1"=20'
 SHEET NO. 5 OF 5 SHEETS
 STA. TO STA.
 F.A.S. RTE. 1279
 SECTION 06-00017-01-LS
 COUNTY LA SALLE
 TOTAL SHEETS 29
 SHEET NO. 14
 CONTRACT NO. 87355
 FED. ROAD DIST. NO. ILLINOIS FED. AID PROJECT

FILE NAME =	USER NAME = #USER#	DESIGNED - JM	REVISED -	STATE OF ILLINOIS DEPARTMENT OF TRANSPORTATION	PROPOSED LANDSCAPING PLANS 5			F.A.S. RTE. 1279	SECTION 06-00017-01-LS	COUNTY LA SALLE	TOTAL SHEETS 29	SHEET NO. 14	
#FILE#	PLOT SCALE = #SCALE#	CHECKED - JB	REVISED -		SCALE: 1"=20'	SHEET NO. 5 OF 5 SHEETS	STA. TO STA.	FED. ROAD DIST. NO.	ILLINOIS FED. AID PROJECT				
#EXP	PLOT DATE = #DATE#	DATE - 04/05/13	REVISED -										
<small> exp U.S. Services Inc. CHICAGO, IL BUILDINGS - EARTH & ENVIRONMENT - ENERGY INDUSTRIAL - INFRASTRUCTURE - SUSTAINABILITY </small>													