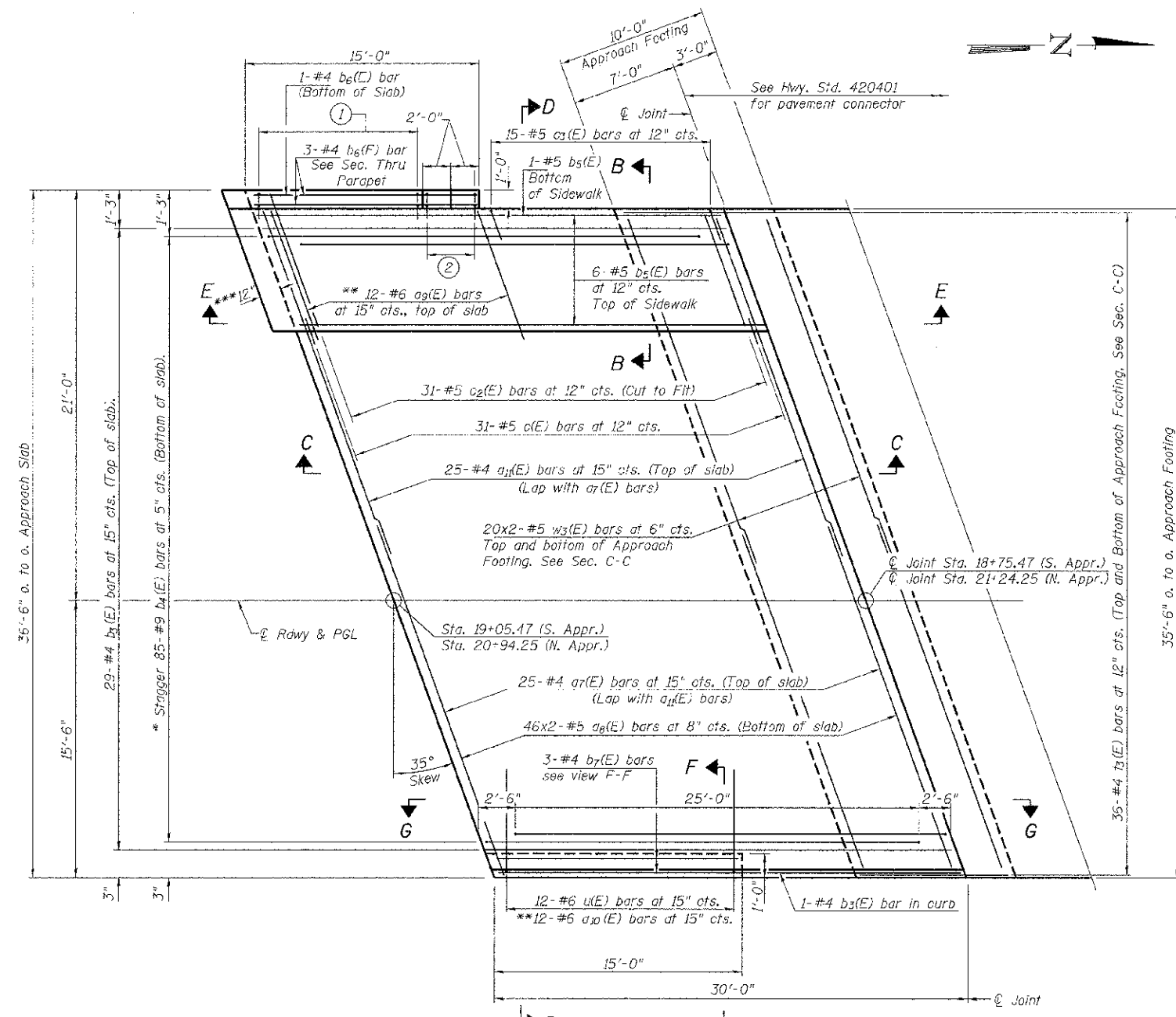


- ① 12-#4 d4(E) bars at 12" cts. O.F.  
12-#6 d3(E) bars at 12" cts. I.F.
- ② 5-#4 d6(E) bars at 11" cts. O.F., cut to fit taper  
5-#6 d5(E) bars at 11" cts. I.F., cut to fit taper

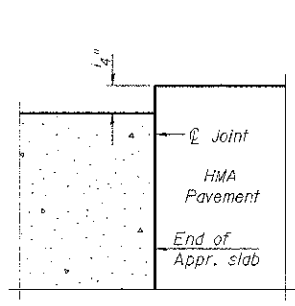
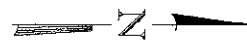
Notes:  
See sheet 13 of 28 for Sections C-C & D-D, E-E and View G-G.  
a7(E), a8(E) and a11(E) bar spacings measured along @ Rdwy.



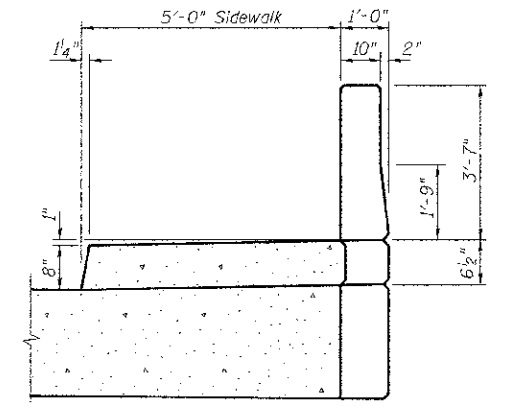
**PLAN**  
(North Approach shown, South Approach Similar)

\* Tilt #9 b4(E) bars as required to maintain clearance.  
\*\* Space between a7(E) bars.  
\*\*\* Concrete for sidewalk and parapet on hatch block shall be included in Concrete Superstructure in Bridge Approach Slab Bill of Material.

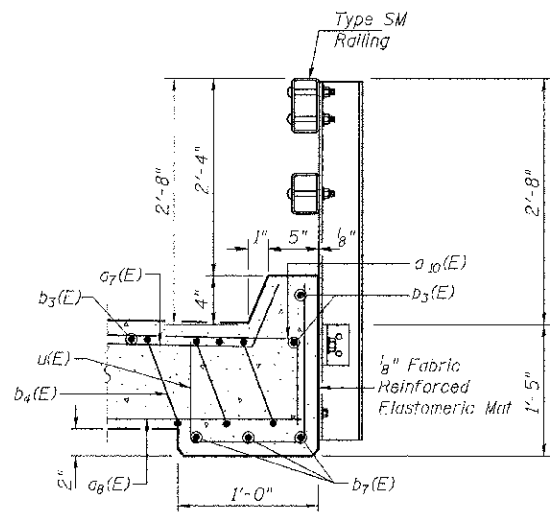
**MIN. BAR LAP**  
#4 = 2'-3"  
#5 = 2'-6"



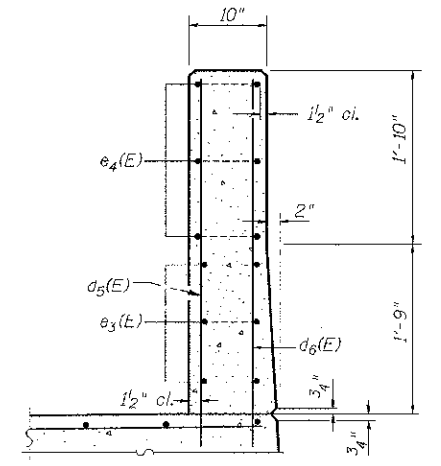
**DETAIL A**  
FLEXIBLE PAVEMENT



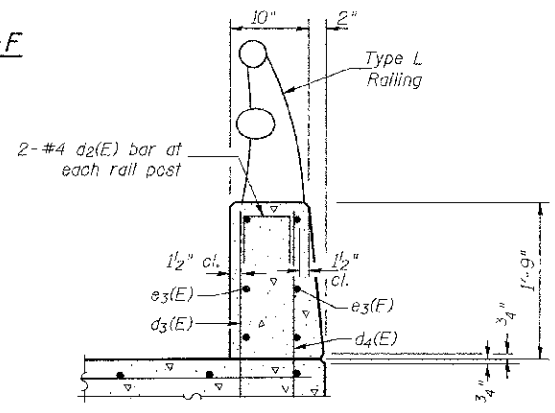
**VIEW B-B**



**SECTION F-F**



**SECTION THRU END OF PARAPET**



**SECTION THRU PARAPET**

FILE NAME = V:\2555\0400 SHEETS\STRUCTURES -- Rev\J	USER NAME = amounsal	DESIGNED BAN	REVISED -	<b>DEKALB COUNTY C.H. 26 (FIVE POINTS RD.) OVER SOUTH BRANCH OF KISHWAUKEE RIVER</b>	RTE. NO.	SECTION	COUNTY	TOTAL SHEETS	SHEET NO.	
	82-27-2013\2555\0400.dgn	DRAWN FAC	REVISED -		CH 26	05-00044-01-BR	DEKALB	49	27	
	PLOT SCALE = NONE	CHECKED CTM	REVISED -		SCALE: N/A		SHEET NO. 12 OF 28 SHEETS		STA. N/A TO STA. N/A	CONTRACT NO. 87477
	PLOT DATE = 3/26/2013	DATE -	REVISED -		ILLINOIS		FED. AID PROJECT BR3-1122108			