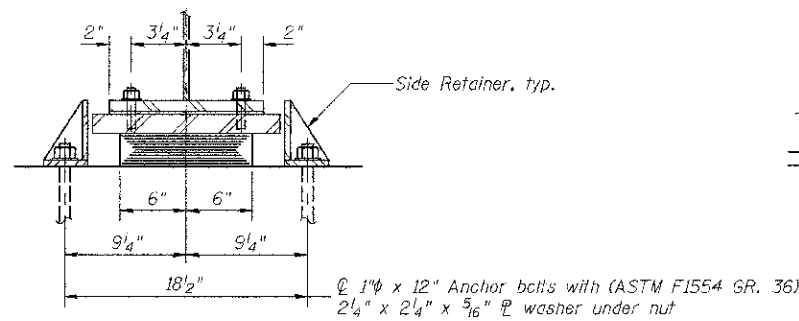
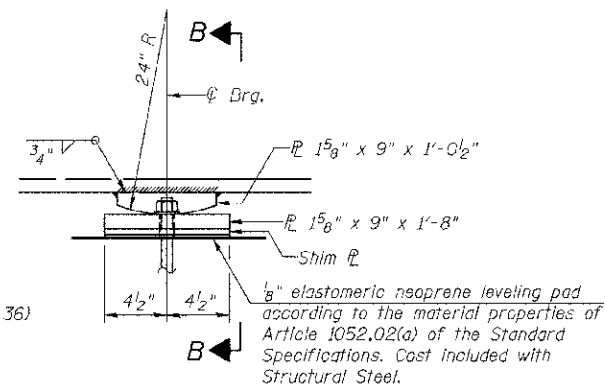


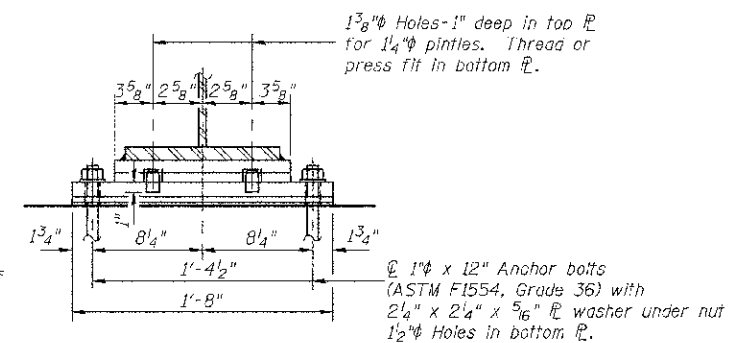
**ELEVATION AT  
NORTH & SOUTH ABUTMENTS**



**SECTION A-A**



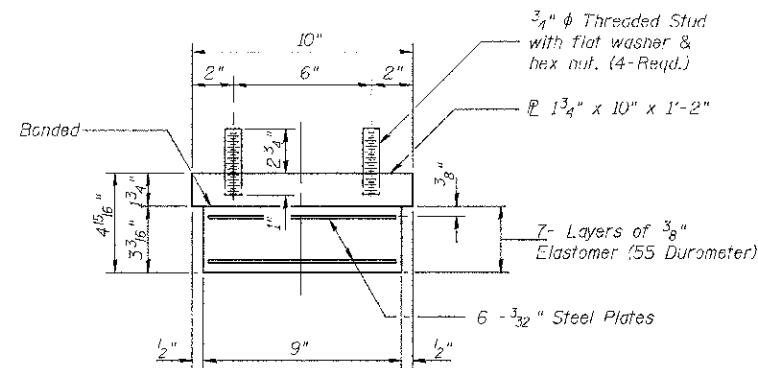
**ELEVATION AT PIERS 1 & 2**



**SECTION B-B**

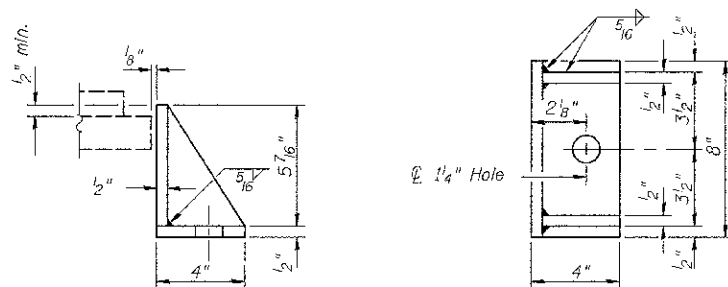
**TYPE I ELASTOMERIC EXP. BRG.**

**FIXED BEARING**



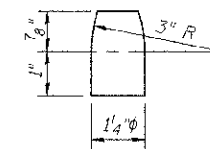
**BEARING ASSEMBLY**

Note: Shim plates shall not be placed under Bearing Assembly.



**SIDE RETAINER**

Equivalent rolled angle with stiffeners will be allowed in lieu of welded plates.



**PINTLE  
(Grade 50W)**

**Notes:**

Anchor bolts shall be ASTM F1554 all-thread (or an Engineer-approved alternate material) of the grade(s) and diameter(s) specified. The corresponding specified grade of AASHTO M314 anchor bolts may be used in lieu of ASTM F1554.

Anchor bolts at fixed bearings may be either cast in place or installed in holes drilled after the supported member is in place.

Anchor bolts for side retainers may be cast in place or installed in holes drilled before or after members are in place.

Drilled and set anchor bolts shall be installed according to Article 521.06 of the Standard Specifications.

Side retainers and other steel members required for the bearing assembly shall be included in the cost of Elastomeric Bearing Assembly Type I.

Two 1/8 inch adjusting shims shall be provided for each bearing in addition to all other plates or shims and placed as shown on bearing details.

The structural steel plates of the Bearing Assembly shall conform to the requirements of AASHTO M 270 Grade 50W.

**BILL OF MATERIAL**

Item	Unit	Total
Elastomeric Bearing Assembly Type I	EACH	12
Anchor Bolts, 1"	EACH	48

FILE NAME = V:\2856\CADD SHEETS\STRUCTURES - Rev'd	USER NAME = smountsl	DESIGNED BAN	REVISED -	<b>DEKALB COUNTY C.H. 26 (FIVE POINTS RD.) OVER SOUTH BRANCH OF KISHWAUKEE RIVER</b>	<b>BEARING DETAILS</b>	RTE. NO.	SECTION	COUNTY	TOTAL SHEETS	SHEET NO.	
	02-27-2013\2856\01.dgn	DRAWN TAC	REVISED -			CH 26	05-00044-01-BR	DEKALB	49	34	
	PLOT SCALE = NONE	CHECKED CTM	REVISED -			CONTRACT NO. 87477					
	PLOT DATE = 3/26/2013	DATE -	REVISED -			SCALE: N/A	SHEET NO. 19 OF 28 SHEETS	STA. N/A	TO STA. N/A	ILLINOIS FED. AID PROJECT BRS-1122(108)	