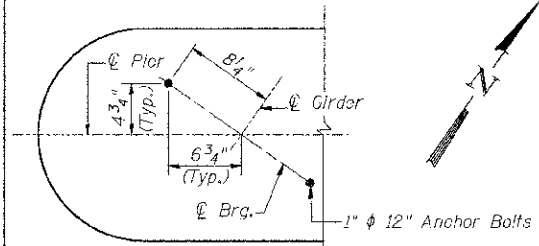
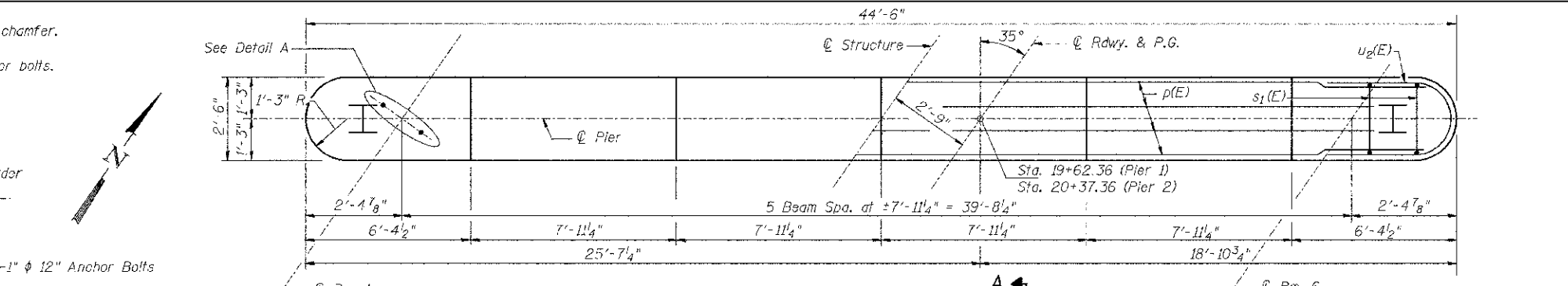


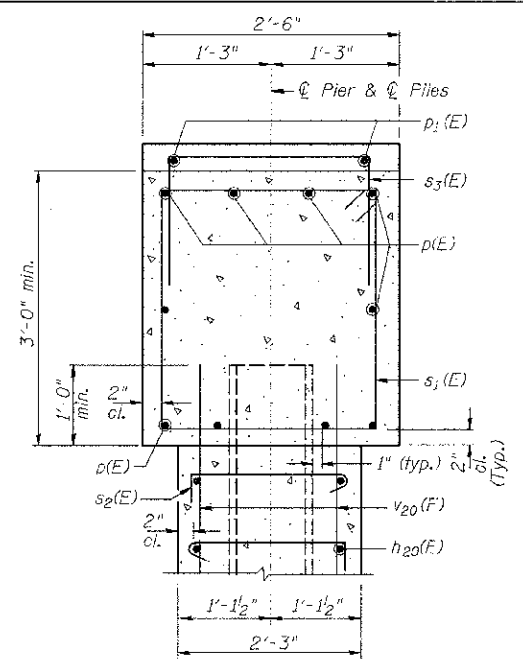
Notes:
 All edges shall have standard $\frac{3}{4}$ " chamfer.
 Pour steps monolithically with cap.
 Space reinforcement to miss anchor bolts.
 See Sh 27 of 28 for pile details.



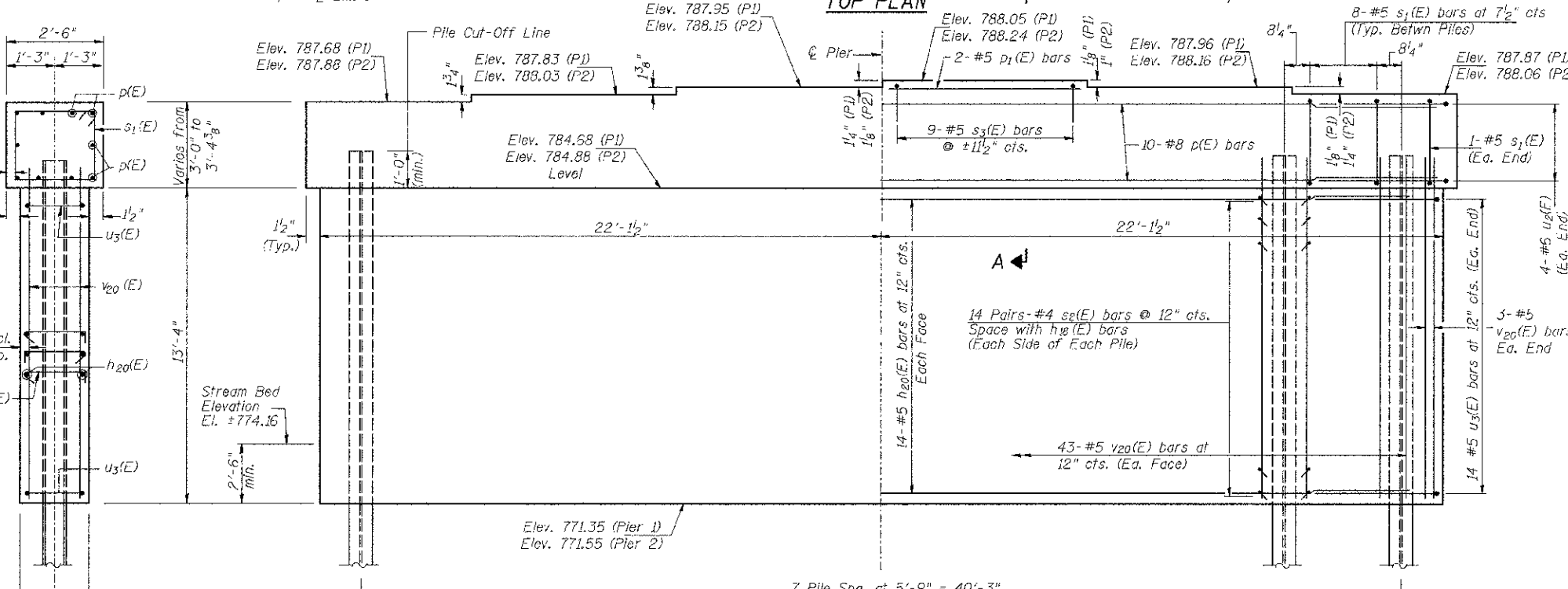
DETAIL A
ANCHOR BOLT LOCATION



TOP PLAN



SECTION A-A

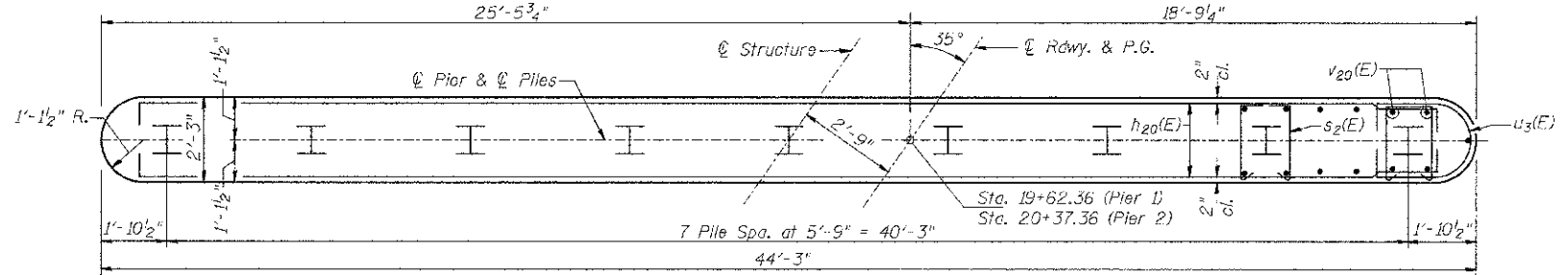


ELEVATION
 (Looking North)

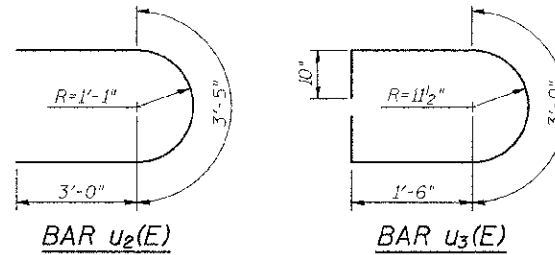
END VIEW

PILE DATA

Type & Size: Steel HP12x53
 Nominal Required Bearing: 419 kips
 Factored Resistance Available: 230 kips
 Est. Length: 41'
 No. Required: 16 (Includes 1 test pile at each pier)



FOOTING PLAN



TWO PIERS
BILL OF MATERIAL

BAR	NO.	SIZE	LENGTH	SHAPE
$h_{20}(E)$	56	#5	43'-8"	—
$p(E)$	20	#8	42'-0"	—
$p_1(E)$	4	#5	7'-7"	—
$s_1(E)$	116	#5	10'-7"	□
$s_2(E)$	448	#4	3'-0"	—
$s_3(E)$	18	#5	6'-0"	—
$u_2(E)$	16	#6	9'-5"	—
$u_3(E)$	56	#5	7'-8"	—
$v_{20}(E)$	184	#5	14'-2"	—
Concrete Structures		CU YD	124.6	
Cofferdam Excavation		CU YD	72	
Reinforcement Bars, Epoxy Coated		POUND	10,510	
Furnishing Steel Piles HP12x53		FOOT	574	
Driving Steel Piles		FOOT	574	
Test Pile HP12x53		EACH	2	
Pile Shoes		EACH	16	
① Cofferdam, (Type 2) (Location 3)		EACH	1	
① Cofferdam, (Type 2) (Location 4)		EACH	1	

① See Special Provisions

FILE NAME = V:\2556\ADD SHEETS\STRUCT\UPES - Rec.d	USER NAME = amoutsl	DESIGNED BAN	REVISED -	DEKALB COUNTY C.H. 26 (FIVE POINTS RD.) OVER SOUTH BRANCH OF KISHWAUKEE RIVER	PIERS 1 AND 2	RTE. NO.	SECTION	COUNTY	TOTAL SHEETS	SHEET NO.
	02-27-2013\2556\026.dgn	DRAWN TAC	REVISED -			CH 26	05-00044-01-BR	DE KALB	49	41
	PLOT SCALE = NONE	CHECKED CTM	REVISED -			SCALE: N/A	SHEET NO. 26 OF 28 SHEETS	STA. N/A	TO STA. N/A	CONTRACT NO. 87477
	PLOT DATE = 3/26/2013	DATE -	REVISED -			ILLINOIS	FED. AID PROJECT BR5-1122108			