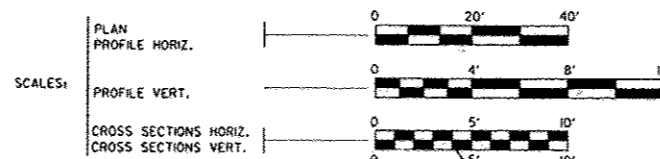


ROUTE NO.	SECTION	COUNTY	SHEET NO.	TOTAL SHEETS
FAS 452	*	FULTON	26	1
FED. AID DIST. NO. 7		ILLINOIS		FED. AID PROJECT
*09-00130-05-BR				

**INDEX OF SHEETS**

SHEET NO.	DESCRIPTION
1	COVER SHEET
2	SUMMARY OF QTYS & TYPICAL SECTIONS
3	SCHEDULE OF QTYS & GENERAL NOTES
4	PLAN & PROFILE
5	EROSION CONTROL PLAN
6 - 18	BRIDGE PLANS
19 - 21	CROSS SECTIONS
22 - 26	TRAFFIC BARRIER TERMINAL, TYPE 6A (SPECIAL)

# STATE OF ILLINOIS DEPARTMENT OF TRANSPORTATION PLANS FOR PROPOSED BRIDGE REPLACEMENT

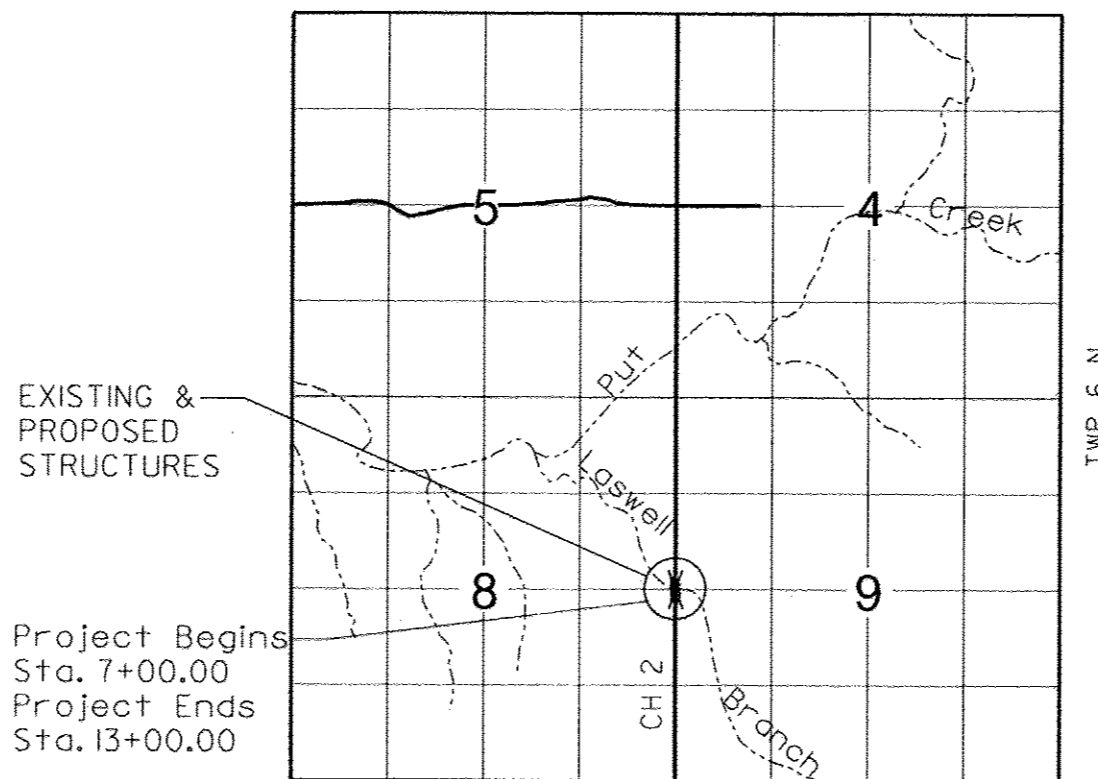
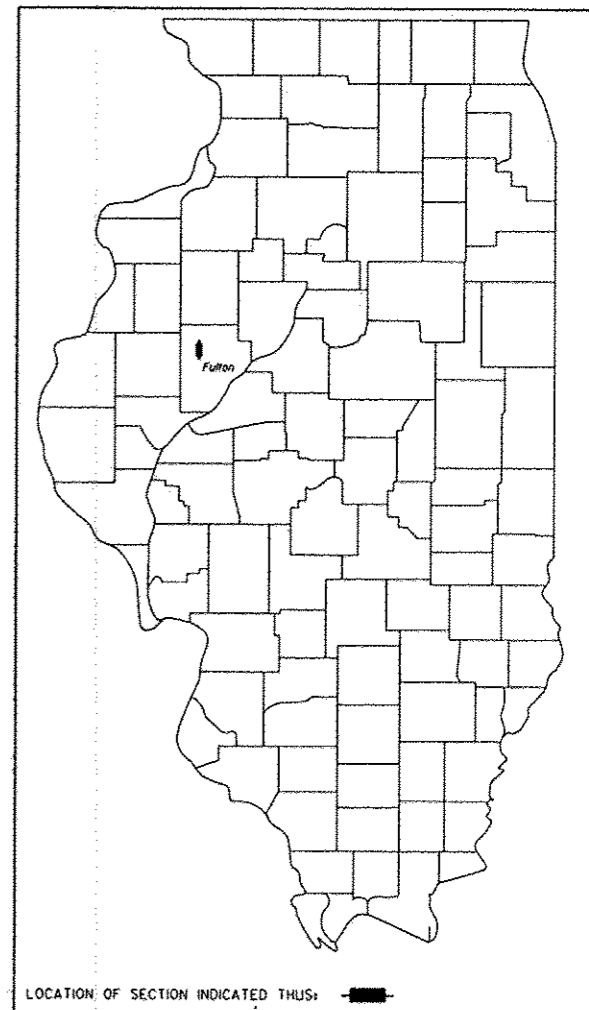


**FULTON COUNTY**  
**SECTION 09-00130-05-BR**  
**FAS 452**  
**COUNTY HIGHWAY 2**  
**BRS-0452(121)**  
**HIGHWAY BRIDGE PROGRAM**  
**C-94-052-09**

R 2 E, 4th P.M.

**LIST OF STANDARD DRAWINGS**

STANDARD NO.	DESCRIPTION
000001-06	STANDARD SYMBOLS, ABBREVIATIONS, AND PATTERNS
280001-07	TEMPORARY EROSION CONTROL SYSTEMS
515001-03	NAME PLATE FOR BRIDGES
630001-10	STEEL PLATE BEAM GUARDRAIL
630301-06	SHOULDER WIDENING FOR GUARDRAIL TERMINALS
631011-09	TRAFFIC BARRIER TERMINAL TYPE 2
631032-08	TRAFFIC BARRIER TERMINAL TYPE 6A
701006-04	OFF ROAD OPERATIONS, MULTILANE, 15' TO 24' FROM PAVEMENT EDGE
701901-02	TRAFFIC CONTROL DEVICES
780001-03	TYPICAL PAVEMENT MARKINGS
BLR 21-9	TYPICAL APPLICATION OF TRAFFIC CONTROL DEVICES FOR CONSTRUCTION OF RURAL LOCAL HIGHWAYS
BLR 23-4	TRAFFIC BARRIER TERMINAL TYPE 1



EXISTING & PROPOSED STRUCTURES

Project Begins Sta. 7+00.00  
Project Ends Sta. 13+00.00

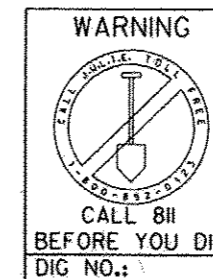
LOCATION MAP

ADT = 550 (CURRENT), 550 (DESIGN)  
 FUNCTIONAL CLASS = COLLECTOR  
 NET LENGTH OF SECTION = 600 FEET = 0.114 MILES



KELLY JO HOFFMANN  
 Illinois Licensed Professional Engineer Number 58725  
 License Expires 11/30/2013

COMMITMENTS-none



APPROVED March 18 2013  
  
 WILLIAM KUHN, PE FULTON COUNTY ENGINEER

---

PASSED 03-21 2013  
  
 WILLIAM KUHN, PE FULTON COUNTY ENGINEER

---

Releasing For Bid Based on Limited Review March 25 2013  
  
 WILLIAM KUHN, PE FULTON COUNTY ENGINEER

DEPUTY DIRECTOR OF HIGHWAYS,  
REGION THREE ENGINEER  
STATE OF ILLINOIS  
DEPARTMENT OF TRANSPORTATION