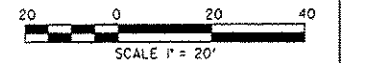
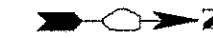


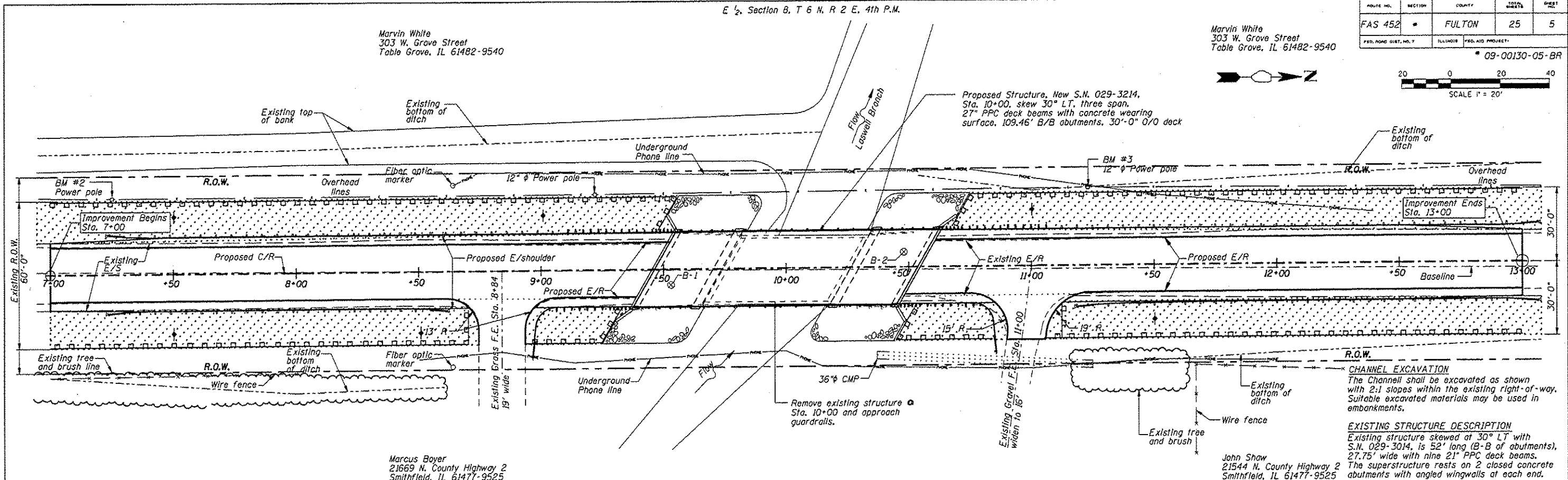
ROUTE NO.	SECTION	COUNTY	SHEET	TOTAL
FAS 452	*	FULTON	25	5
FED. ROAD DIST. NO. 7		ILLINOIS		FED. AID PROJECT
				* 09-00130-05-BR

Marvin White
303 W. Grove Street
Table Grove, IL 61482-9540



E 1/2 Section 8, T 6 N, R 2 E, 4th P.M.

Marvin White
303 W. Grove Street
Table Grove, IL 61482-9540



Marcus Boyer
21669 N. County Highway 2
Smithfield, IL 61477-9525



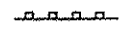

John Shaw
21544 N. County Highway 2
Smithfield, IL 61477-9525

W 1/2 Section 9, T 6 N, R 2 E, 4th P.M.

EROSION CONTROL SEQUENCE

1. Placement of perimeter erosion control barrier prior to commencement of any work. See Standard 280001.
2. Removal of the existing structure
3. Earth excavation & structure excavation.
5. Construction of the substructure.
6. Placement of PPC deck beams and concrete wearing surface.
7. Place grouted riprap.
8. Regrade for pavement widening, base coarse, and HMA placement.
9. Install guardrail and bridge rail.
10. Removal and proper clean up of the temporary erosion controls.
11. Placement of the permanent erosion controls.

PERMANENT EROSION CONTROL

-  Seeding, Cl. 2 with Fertilizer and Mulch
- TEMPORARY EROSION CONTROL**
-  Temporary Ditch Check (10' each location)
-  Perimeter Erosion Barrier
-  Temporary Erosion Control Seeding

NITROGEN FERTILIZER NUTRIENT PHOSPHORUS FERTILIZER NUTRIENT POTASSIUM FERTILIZER NUTRIENT			
LOCATION			POUND
STA. 6+85.00 TO STA. 9+45.27	LT		10
STA. 7+00.00 TO STA. 9+45.27	RT		8
STA. 10+54.73 TO STA. 13+45.00	LT		10
STA. 10+54.73 TO STA. 13+45.00	RT		9
TOTAL			37

SEEDING, CLASS 2 MULCH, METHOD 2			
LOCATION			ACRE
STA. 6+85.00 TO STA. 9+45.27	LT		0.11
STA. 7+00.00 TO STA. 9+45.27	RT		0.08
STA. 10+54.73 TO STA. 13+45.00	LT		0.11
STA. 10+54.73 TO STA. 13+45.00	RT		0.10
TOTAL			0.40

TEMPORARY DITCH CHECKS			
LOCATION			FOOT
STA. 7+50	LT/RT		20
STA. 8+50	RT		10
STA. 9+00	LT		10
STA. 11+00	LT		10
STA. 11+50	RT		10
STA. 12+50	LT/RT		20
TOTAL			80

PERIMETER EROSION BARRIER		
LOCATION		FOOT
STA. 6+85.00 TO STA. 9+56.50	LT	275
STA. 7+00.00 TO STA. 8+75.00	RT	190
STA. 8+94.00 TO STA. 9+36.00	RT	55
STA. 10+43.50 TO STA. 10+92.00	RT	70
STA. 10+65.30 TO STA. 13+45.00	LT	290
STA. 11+04.00 TO STA. 13+45.00	RT	260
TOTAL		1140

TOP SOIL FURNISH & PLACE, 4'		
LOCATION		SQ YD
STA. 6+85.00 TO STA. 9+45.27	LT	525
STA. 7+00.00 TO STA. 9+45.27	RT	405
STA. 10+54.73 TO STA. 13+45.00	LT	519
STA. 10+54.73 TO STA. 13+45.00	RT	508
TOTAL		1957

TEMPORARY EROSION CONTROL SEEDING		
LOCATION		POUND
STA. 6+85.00 TO STA. 9+45.27	LT	11
STA. 7+00.00 TO STA. 9+45.27	RT	8
STA. 10+54.73 TO STA. 13+45.00	LT	11
STA. 10+54.73 TO STA. 13+45.00	RT	10
TOTAL		40

BILL OF MATERIAL - EROSION CONTROL		
ITEM	UNIT	QUANTITY
Top Soil Furnish & Place, 4'	SQ. YD.	1957
Seeding, Class 2	ACRE	0.40
Nitrogen Fertilizer Nutrient	POUND	37
Phosphorus Fertilizer Nutrient	POUND	37
Potassium Fertilizer Nutrient	POUND	37
Mulch, Method 2	ACRE	0.40
Temporary Erosion Control Seeding	POUND	40
Temporary Ditch Checks	FOOT	80
Perimeter Erosion Barrier	FOOT	1140