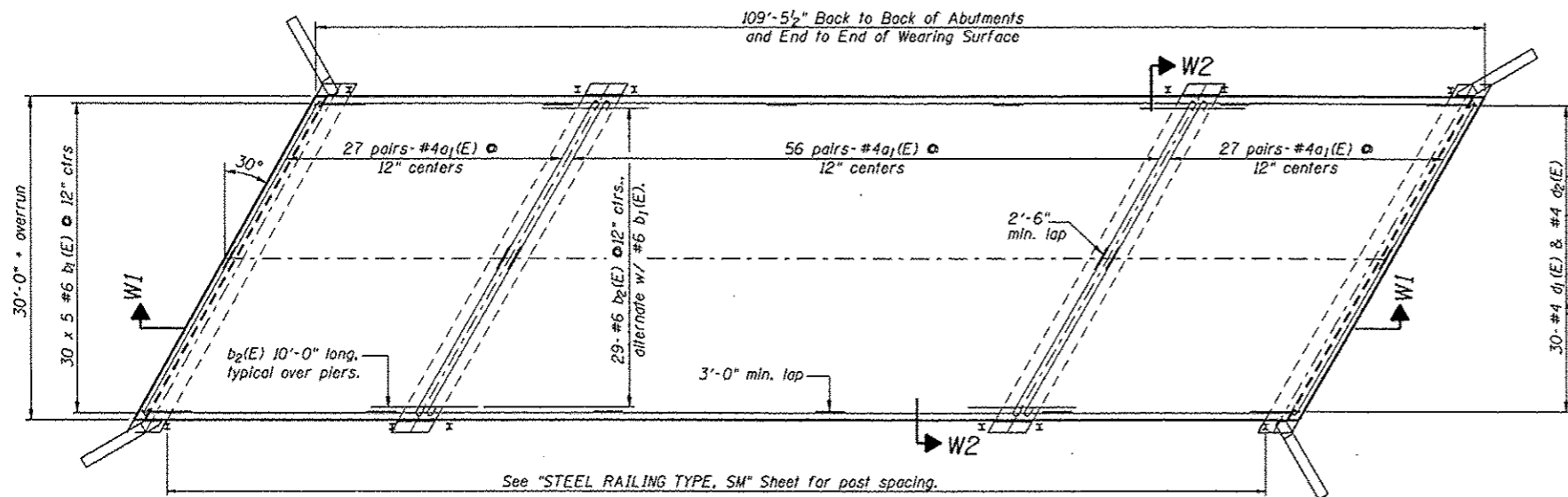
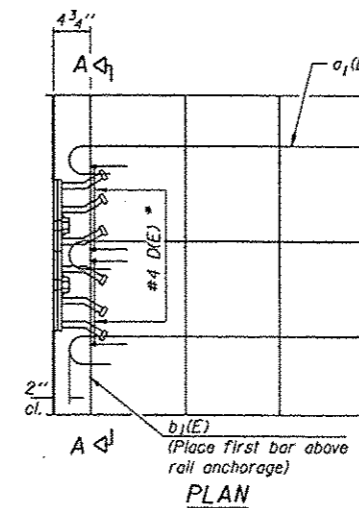


ROUTE NO.	SECTION	COUNTY	SHEETS	NO.
FAS452	#	FULTON	26	11
FED. ROAD DIST. NO. 7	ILLINOIS	FED. AID PROJECT		

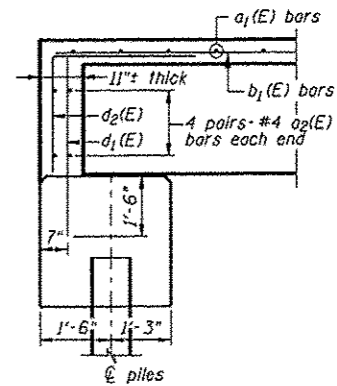
08-00130-05-BR



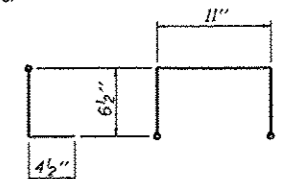
PLAN VIEW



Notes:
Formwork necessary for the wearing surface may be secured utilizing the bottom rail anchorage inserts and/or additional inserts cast into the beam.

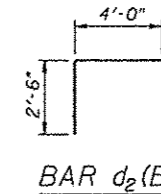


DETAIL Z
Cut perpendicular to skew.

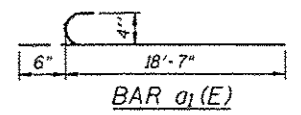


BAR DIE

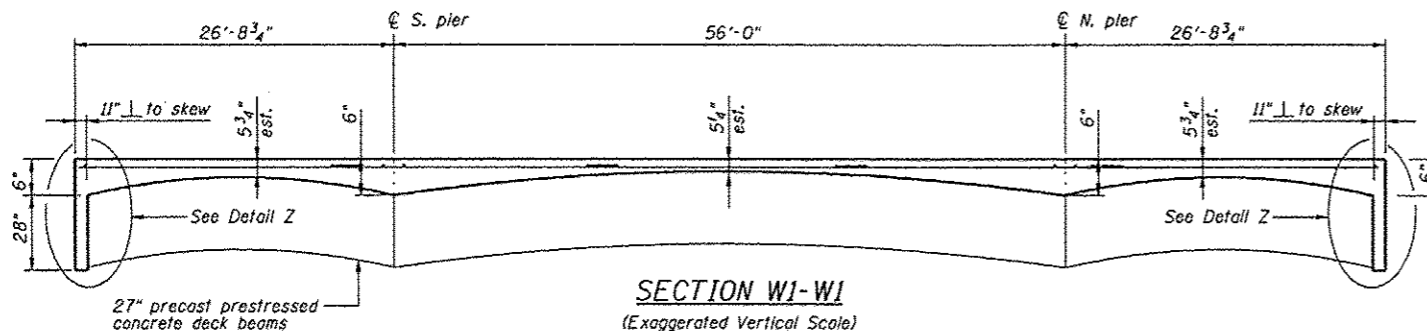
* Place 2-#4 DIE bars in beam at each post location as shown. DIE bar included in cost of beam, but not broken out in the PPC Deck Beam(s) Bill of Materials.



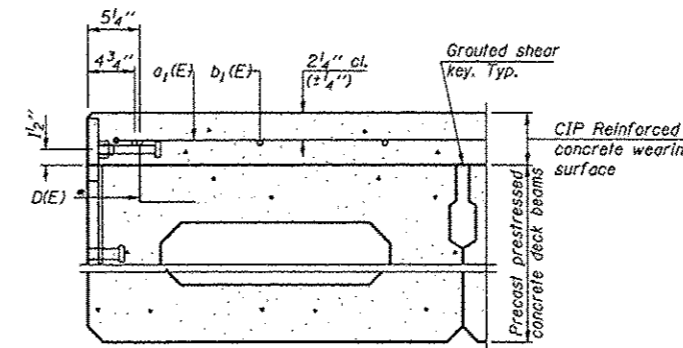
BAR d₂(E)



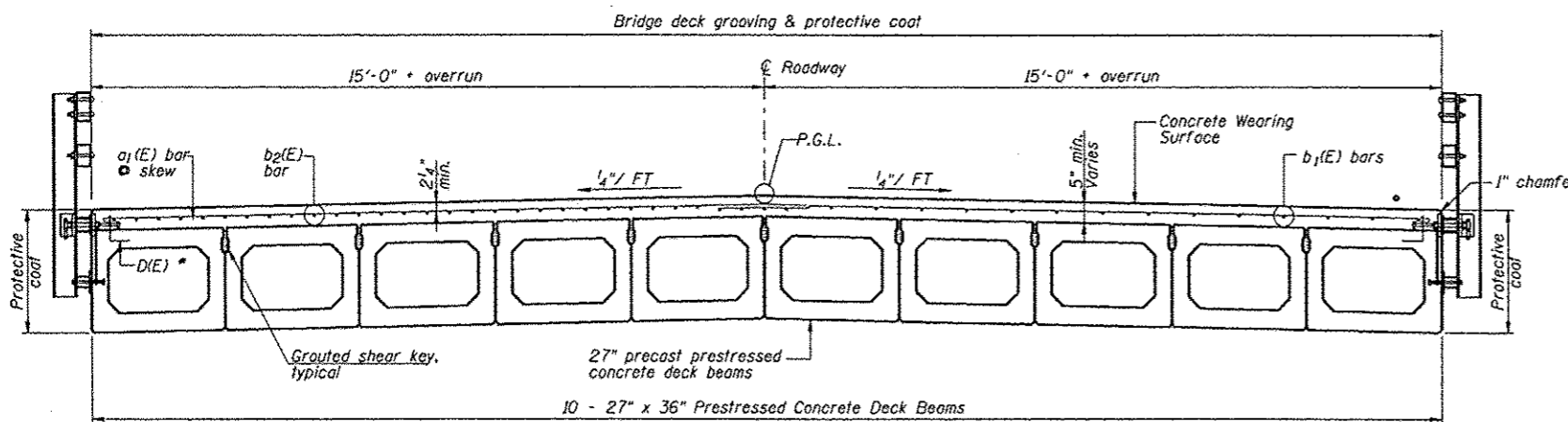
BAR a₁(E)



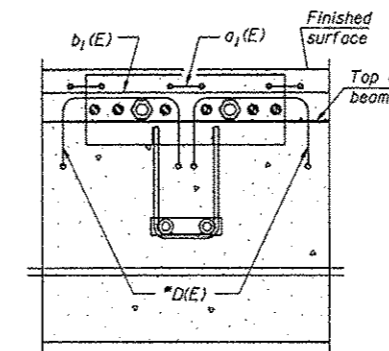
SECTION W1-W1
(Exaggerated Vertical Scale)



SECTION THRU FASCIA BEAM



SECTION W2-W2
Section through beams and wearing surface.



SECTION A-A

BILL OF MATERIAL				
Bar	No.	Size	Length	Shape
a ₁ (E)	220	# 4	19'-1"	—
a ₂ (E)	16	# 4	18'-7"	—
b ₁ (E)	150	# 6	24'-4"	—
b ₂ (E)	58	# 6	10'-0"	—
d ₁ (E)	60	# 4	4'-0"	—
d ₂ (E)	60	# 4	6'-6"	—
Concrete Wearing Surface, 5"		Sq. Yds.	365	
Bridge Deck Grooving		Sq. Yds.	365	
Protective Coat		Sq. Yds.	432	
Reinforcement Bars Epoxy Coated		Lbs.	9780	

Notes : Reinforcement bars designated (E) shall be epoxy coated.
Bars indicated thus "30 x 5 -#6 b etc..." indicates 30 lines of bars with 5 lengths per line.
Concrete shall be Class BS.
Prior to the placement of the concrete, the top surface of the beams shall be clean and free of foreign material. See GBSP 34.

DSGN	K.J. Hoffmann				
DR	K.J. Hoffmann				
CHK	J.R. Wolf				
APVD	J.A. Frauenhoffer	NO.	DATE	REVISION	BY



FRAUENHOFER & ASSOCIATES
A division of Engineering Resource Associates, Inc.
Consulting Engineers, Scientists, & Surveyors

3002 CROSSING COURT
CHAMPAIGN, IL 61822
PHONE (217) 351-6268
FAX (217) 355-1902

CONCRETE WEARING SURFACE

FAS 452 (CH2) OVER LASWELL BRANCH OF PUT CREEK
SEC 08-00130-05-BR
FULTON COUNTY

SHEET	11
DWG NO.	9029WRG.dgn
DATE	DEC 2012
PROJ NO.	9029