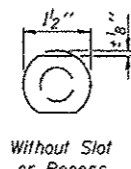
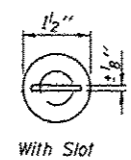
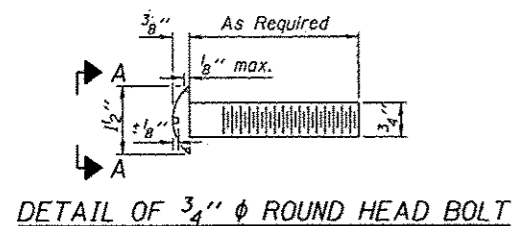
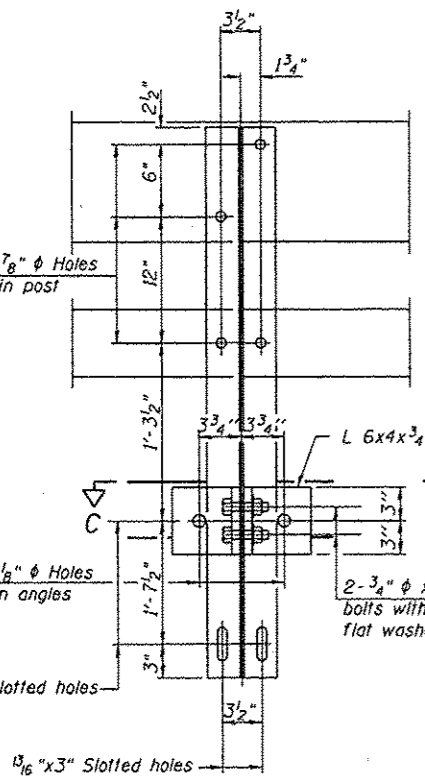


ROUTE NO.	SECTION	COUNTY	TOTAL SHEETS	SHEET NO.
FAS452	*	FULTON	26	17
FED. ROAD DIST. NO. 7		ILLINOIS		FED. AID PROJECT

\* 09-00130-05-BR



VIEW A-A



SECTION B-B

4- 3/4"  $\phi$  x 6" Round Head Bolts  
(With slot or approved recess in head) with locknut & flat washer.  
7/8"  $\phi$  holes in hollow structural section may be drilled in the field.

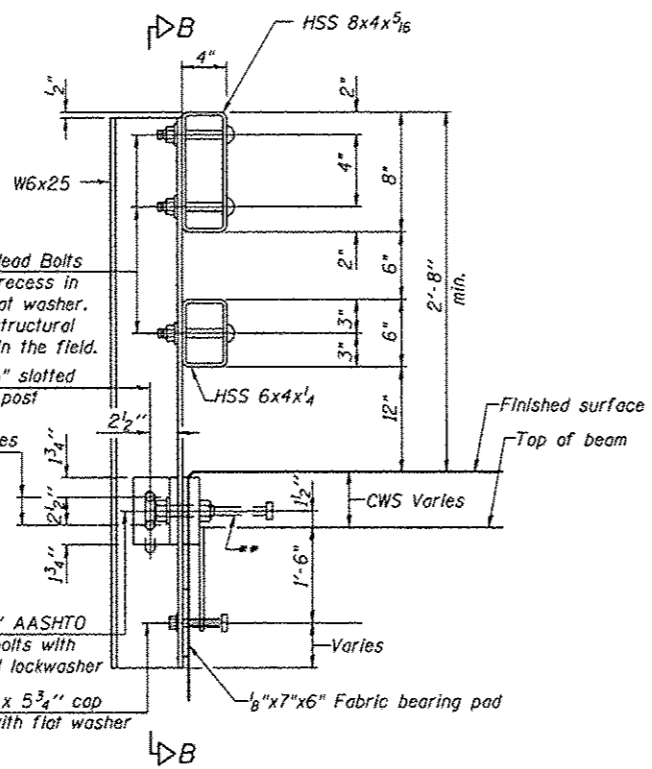
1 1/2" x 5 1/2" slotted hole in post

L 6x4x3/4

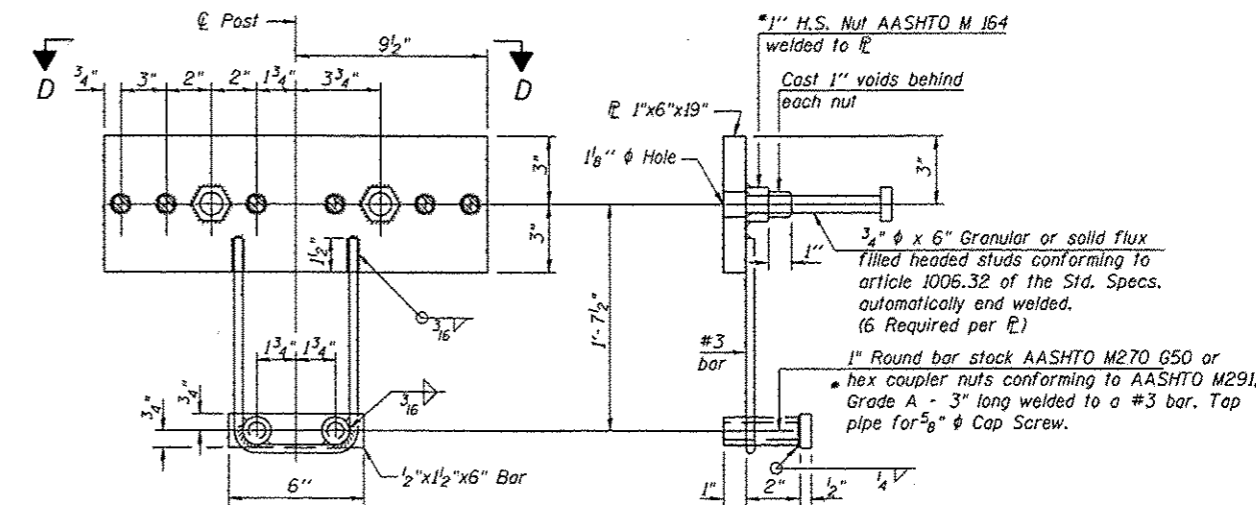
2- 3/4"  $\phi$  x 3 1/4" H.S. bolts with hex nut & flat washers

2- 1"  $\phi$  x 7 3/4" AASHTO M-164 anchor bolts with flat washer and lockwasher

2- 5/8"  $\phi$  x 5 3/4" cap screws with flat washer

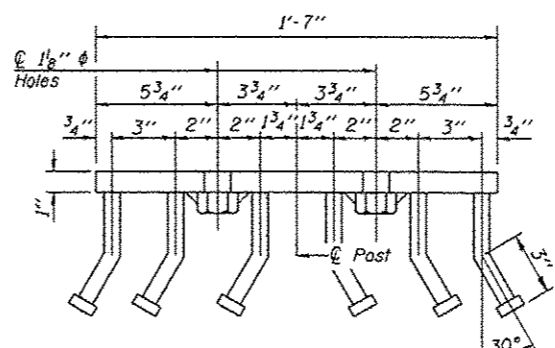


SECTION AT RAIL POST

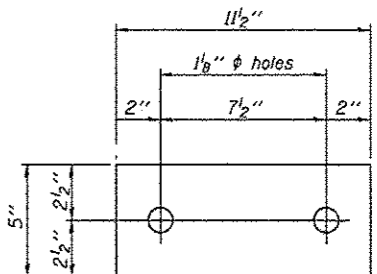


ANCHOR DEVICE

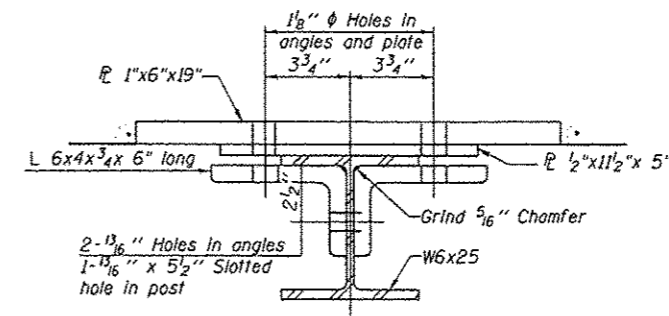
\*Threaded areas shall be plugged or blocked off during casting of beam. Galvanized after fabrication.



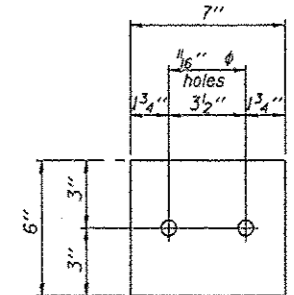
VIEW D-D



1/2" x 11 1/2" x 5"



SECTION C-C



1/2" x 7" x 6"

See "CONCRETE WEARING SURFACE" sheet for details on the pairs of D(E) bars at each embedded anchor in PPC deck beams.

APVD	NO.	DATE	REVISION	BY	APVD
J.A. Fraenhoffer					



**FRAUENHOFFER & ASSOCIATES**  
A Division of Engineering Resource Associates, Inc.  
Consulting Engineers, Scientists, & Surveyors

3002 CROSSING COURT  
CHAMPAIGN, IL 61822  
PHONE (217) 351-6268  
FAX (217) 355-1902

STEEL RAILING, TYPE SM (SHEET 1 OF 2)  
FAS 452 (CH2) OVER LASWELL BRANCH OF PUT CREEK  
SEC 08-00130-05-BR  
FULTON COUNTY

SHEET 17
DWG NO. 8028SM.dgn
DATE DEC 2012
PROJ NO. 9029