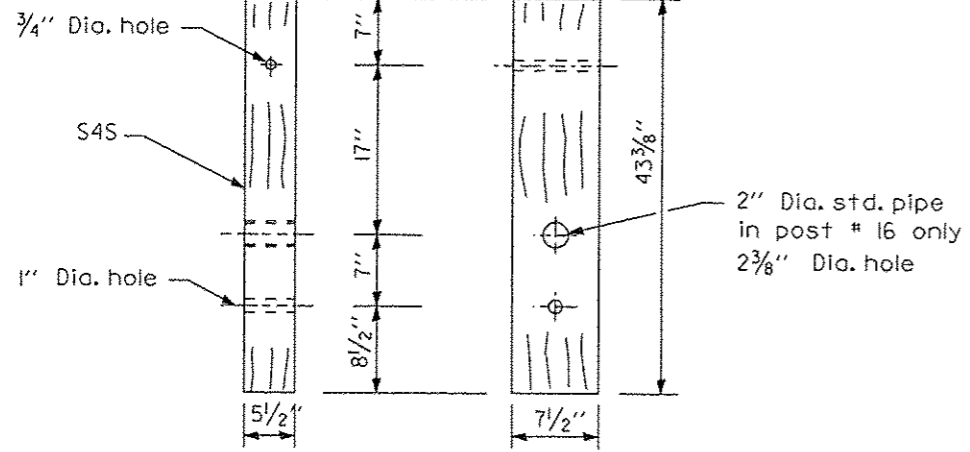
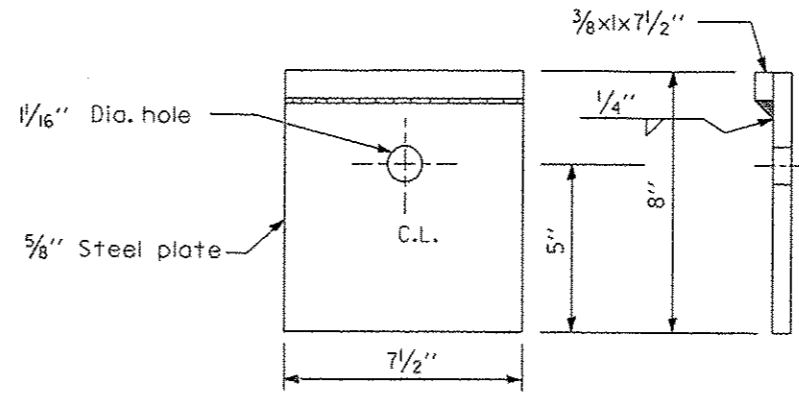


ROUTE NO.	SECTION	COUNTY	SHEET	TOTAL
FAS452	*	FULTON	26	25
FED. ROAD DIST. NO. 7		ILLINOIS		FED. AID PROJECT

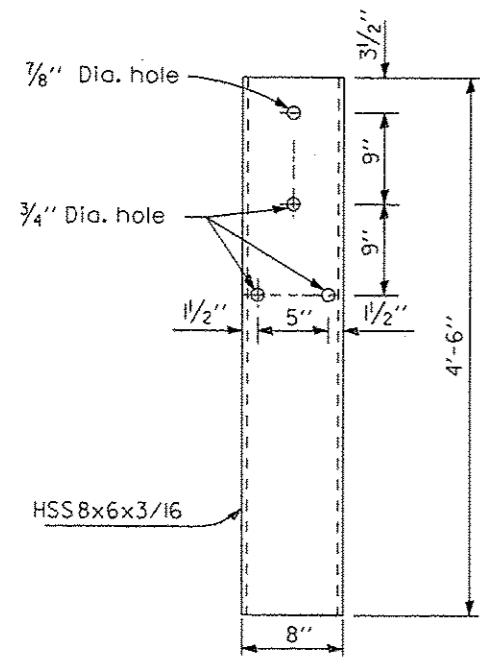
\* 08-00130-05-BR



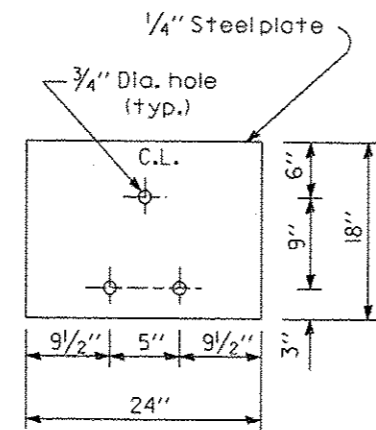
**WOOD BREAKAWAY POST**  
(4 ea.)



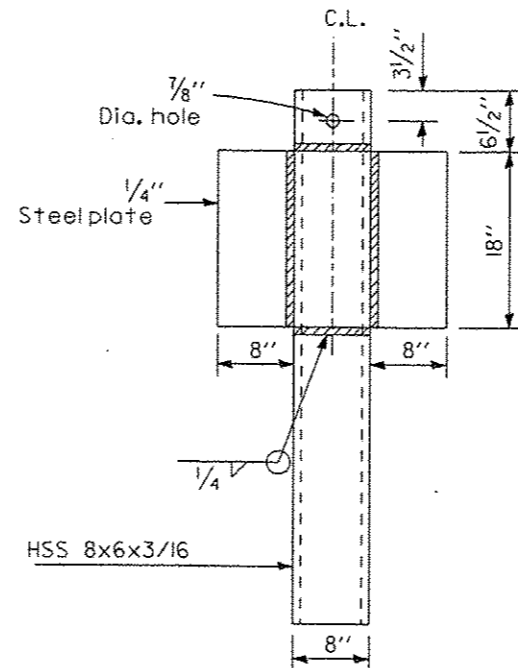
**BEARING PLATE K**  
(1 ea.)



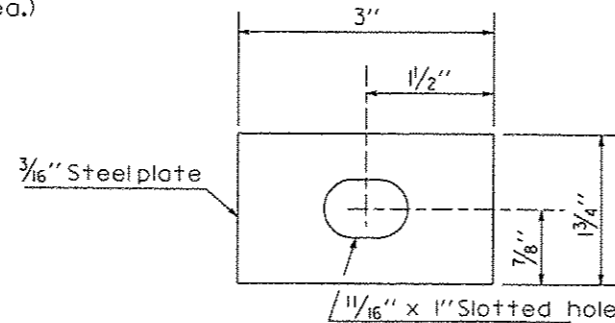
**STEEL TUBE**  
(4 ea.)



**SOIL PLATE H**  
(4 ea.)



**ALTERNATE SOIL PLATE CONNECTION**



**PLATE WASHER F**  
(1 ea.)

DSGN	J. Hoffmann				
DR	K.J. Hoffmann				
CHK	J.R. Wolf				
APVD	J.A. Fraenhoffer	NO.	DATE	REVISION	BY

**FRAUENHOFER & ASSOCIATES**  
A division of Engineering Resource Associates, Inc.  
Consulting Engineers, Scientists, & Surveyors

3002 CROSSING COURT  
CHAMPAIGN, IL 61822  
PHONE (217) 351-6268  
FAX (217) 355-1902

**TRAFFIC BARRIER TERMINAL TYPE 6A (SPECIAL)**  
FAS 452 (CH2) OVER LASWELL BRANCH OF PUT CREEK  
SEC 08-00130-05-BR  
FULTON COUNTY

SHEET	25
DWG NO.	9029-6A.dgn
DATE	DEC 2012
PROJ NO.	9029