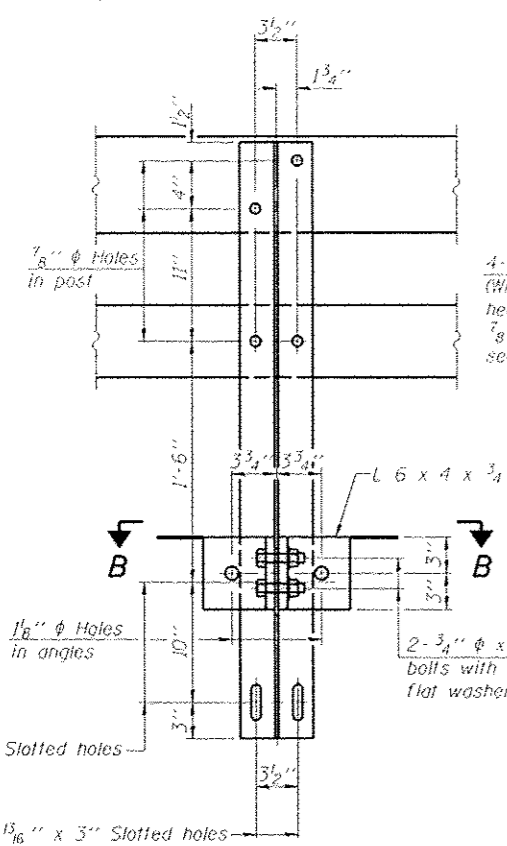
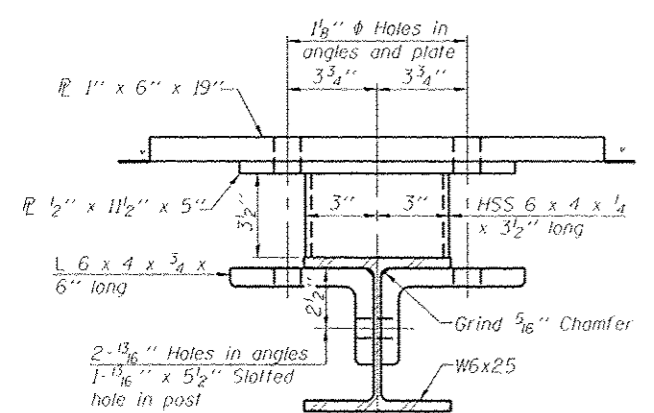


03/27/2013
c:\pwworking\hanson\proj_data\029-3240-89597-5006-511\RailTypeSM.dwg

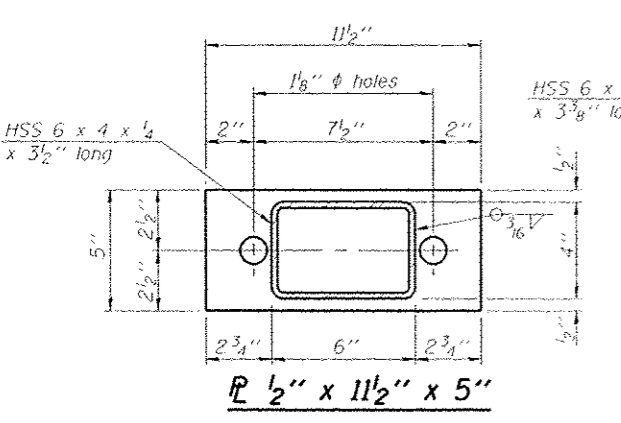
| | |
|------|---------|
| DATE | 1/20/13 |
| BY | MDM |
| CHKD | MDM |
| APPD | MDM |
| DATE | 3/22/13 |
| BY | MDM |
| CHKD | MDM |
| APPD | MDM |



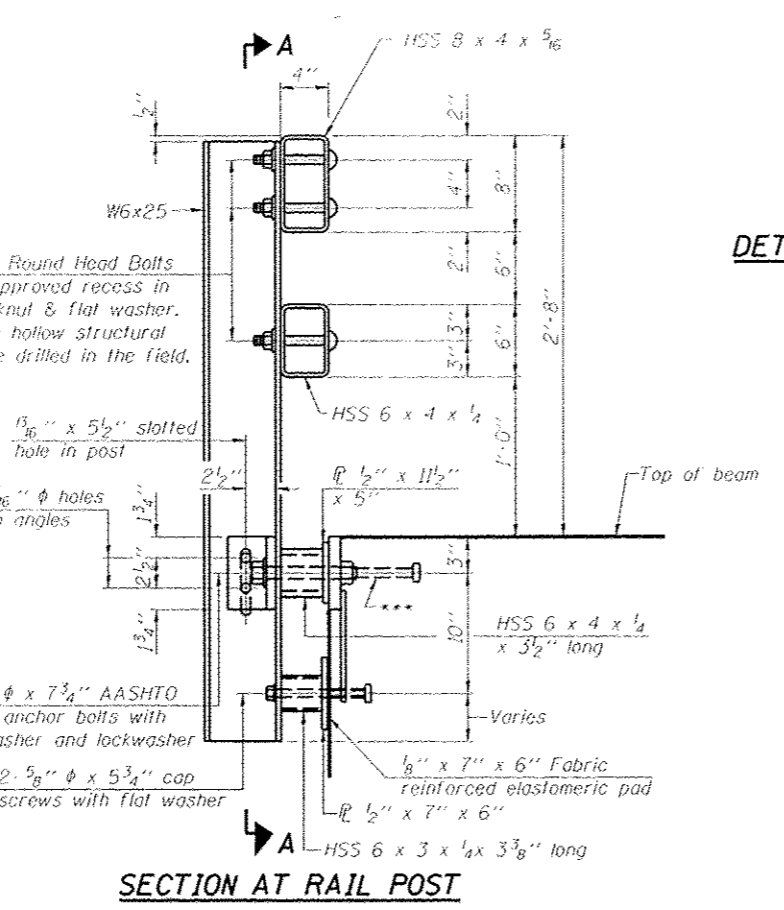
SECTION A-A



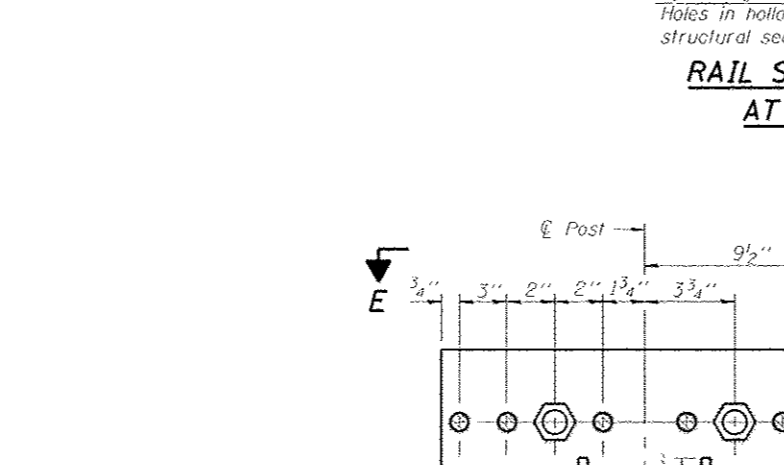
SECTION B-B



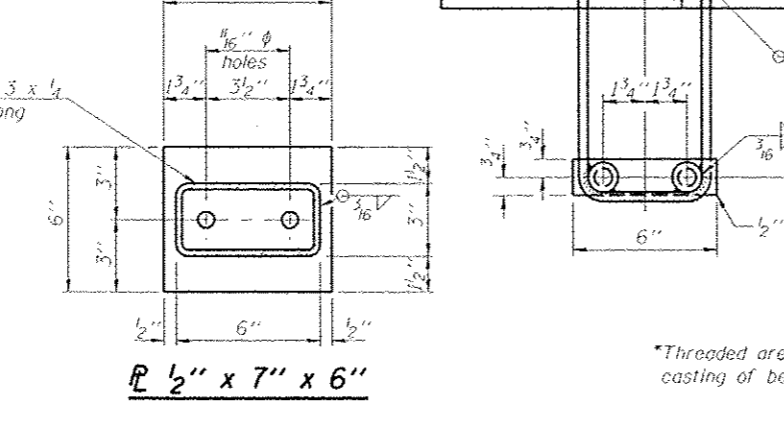
SECTION C-C



SECTION AT RAIL POST

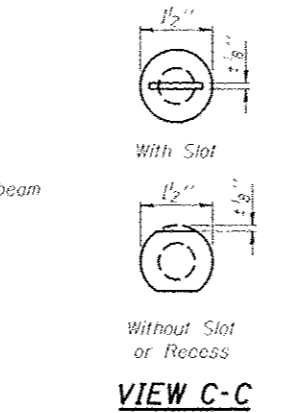


SECTION AT RAIL SPLICE



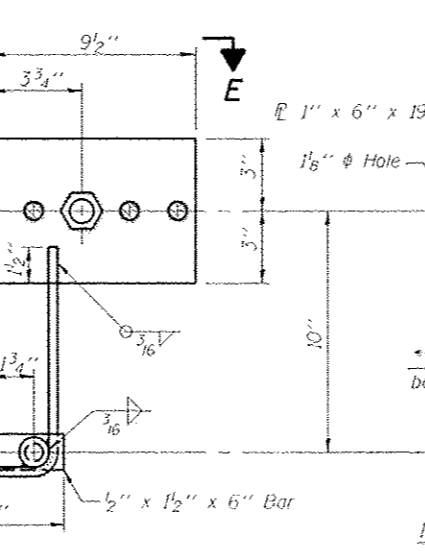
ANCHOR DEVICE

DETAIL OF 3/4" Ø ROUND HEAD BOLT



VIEW C-C

RAIL SPLICE CONNECTION AT EXPANSION JT.



*Threaded areas shall be plugged or blocked off during casting of beam. Galvanized after fabrication.

ϕ - 5/8" reduced base welded studs. Provide 4- 5/8" washers and self-locking nuts or nuts and jam nuts for guardrail connection shown on Std. 631032.

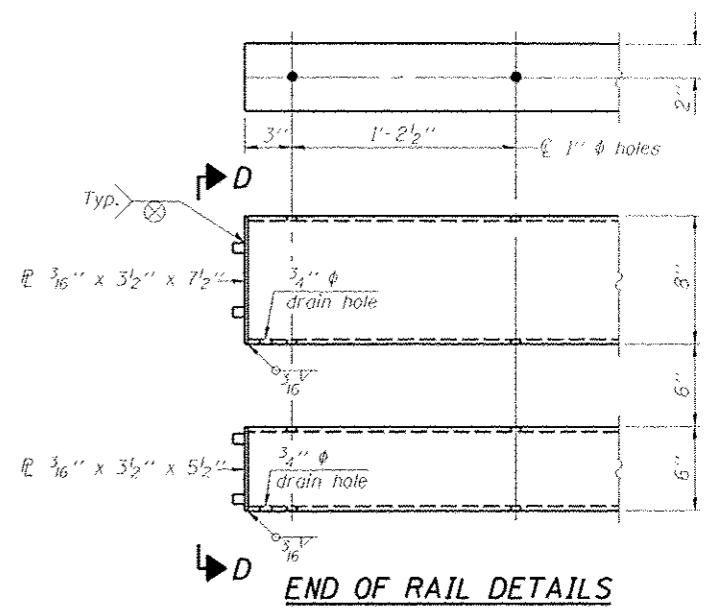
ϕ 3/8" x 2 1/2" x 1'-8" Top & Bottom

ϕ 3/8" x 6 7/8" x 1'-8" Each side, top rail
ϕ 3/8" x 4 7/8" x 1'-8" Each side, bottom rail

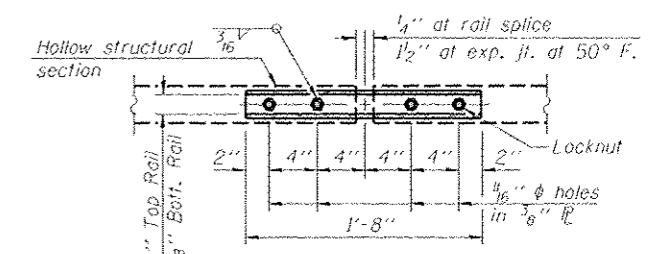
5/8" ϕ x 1 3/4" Cap Screw with flat washer

SECTION AT RAIL SPLICE

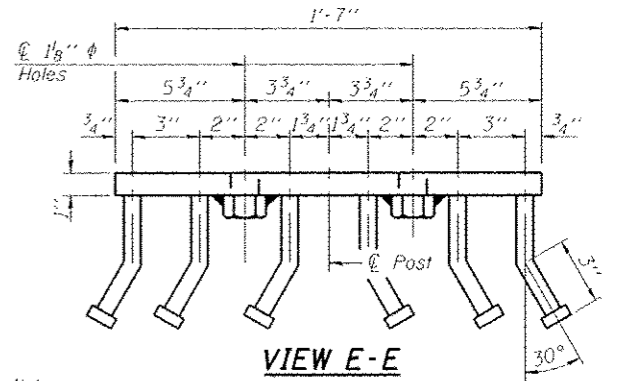
5/8" ϕ x 1 3/4" Cap Screw with flat washer



END OF RAIL DETAILS



PLAN-BOTT. SPLICE TYPICAL



VIEW E-E

Notes:
All field drilled holes shall be coated with an approved zinc rich paint before erection.
For multi-span bridges, sufficient 1/4" x 6" x 1'-2" galvanized steel shims shall be provided to align rail between adjacent spans. Cost included with Steel Railing, Type SM.
All steel rail members shall be galvanized according to Article 509.05 of the Standard Specifications.
*** The studs of the anchor devices shall be placed below the top reinforcement bars and the outermost longitudinal reinforcement bar shall be placed directly above the studs of the rail post anchor device.

BILL OF MATERIAL

| Item | Unit | Quantity |
|------------------------|------|----------|
| Steel Railing, Type SM | Foot | 136 |

**STEEL RAILING, TYPE SM
STRUCTURE NUMBER 029-3240**

PROFESSIONAL DESIGN FIRM LICENSE #184-00108-1

© Copyright Hanson Professional Services Inc. 2013



PROJ. NO. 10LO137

DATE 3/22/13

SHEET NO. 6

9 SHEETS

| CH | SECTION | COUNTY | TOTAL SHEETS | SHEET NO. |
|---|----------------|--------|--------------|-----------|
| 26 | 11-00143-00-BR | Fulton | 23 | 15 |
| CONTRACT NO. 89597 | | | | |
| FED. ROAD DIST. NO. 2 ILLINOIS FED. AID PROJECT | | | | |