

F.A.U. RTE.	SECTION	COUNTY	TOTAL SHEETS	SHEET NO.
	11-P4002-04-BT	PEORIA	73	1
		ILLINOIS	CONTRACT NO. 89639	

**STATE OF ILLINOIS  
DEPARTMENT OF TRANSPORTATION**

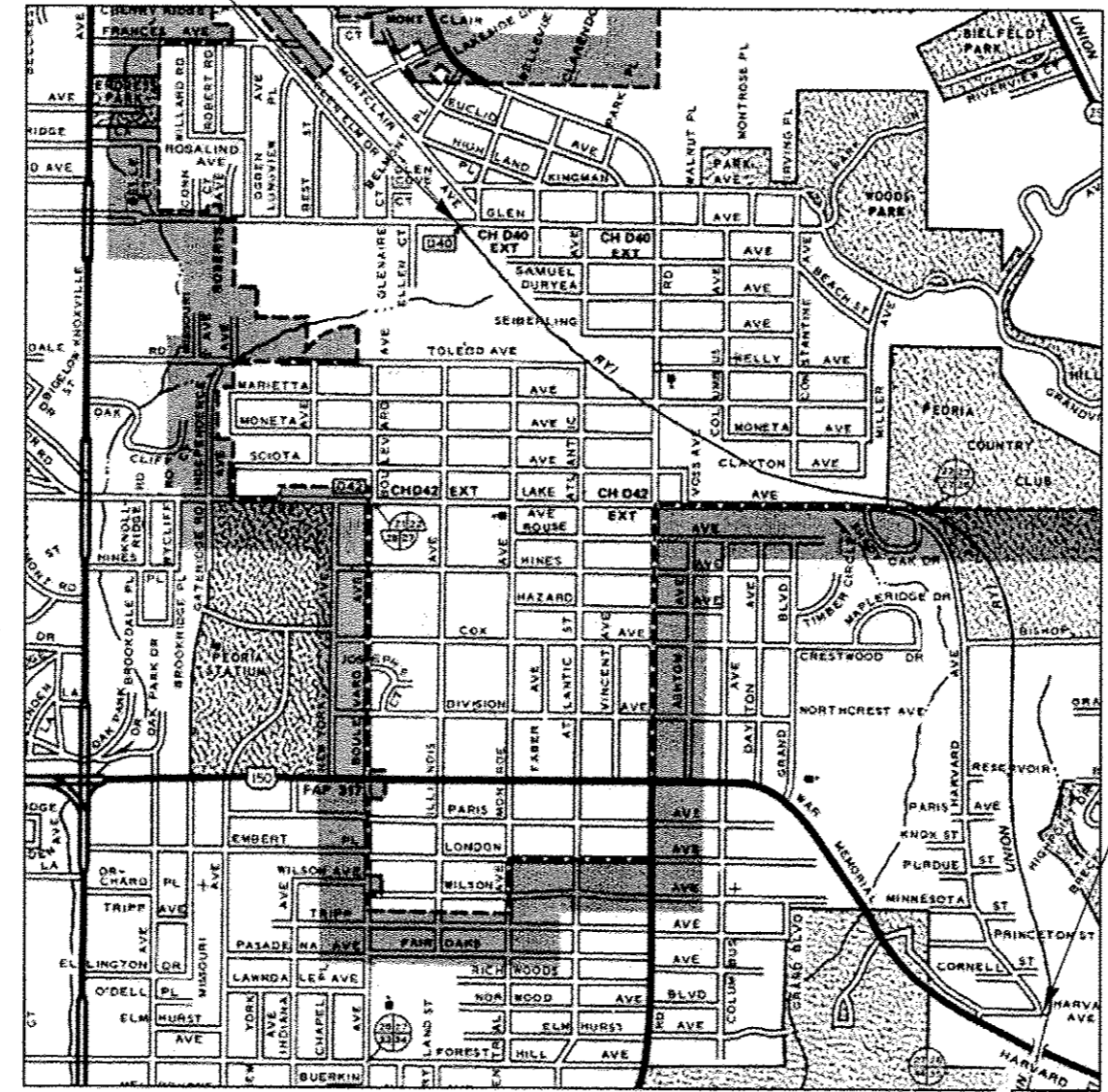
**PLANS FOR  
PROPOSED LOCAL AGENCY IMPROVEMENT  
PEORIA PARK DISTRICT ROCK ISLAND GREENWAY  
SECTION 11-P4002-04-BT  
PROJECT NO. TE-00D4(119)  
PEORIA COUNTY**

- INDEX OF SHEETS**
- 1 COVER SHEET
  - 2 GENERAL NOTES
  - 3 SUMMARY OF QUANTITIES
  - 4-6 SCHEDULE OF QUANTITIES
  - 7-10 TYPICAL SECTIONS
  - 11-14 ALIGNMENT TIES, AND BENCHMARKS
  - 15 REMOVAL PLANS
  - 16-34 PLAN AND PROFILE SHEETS
  - 35 HARVARD AVE TO SPRINGDALE CEMETERY SIGNING PLAN
  - 36-37 CURB RAMP DETAILS
  - 38 BOLLARD AND FENCE DETAIL
  - 39 SIGNING, STRIPING, AND SIDEWALK DETAIL
  - 40 GABION BASKET AND UNDERDRAIN DETAIL
  - 41 TYPE A GUTTER OUTLET DETAIL
  - 42 PRECAST MODULAR BLOCK WALL DETAIL
  - 43 PEDESTRIAN HYBRID BEACON DETAIL
  - 44 424101-D4 COMBINATION CONCRETE CURB-SIDEWALK 4" (100mm)
  - 45 424106-D4 COMBINATION CONCRETE CURB-SIDEWALK 4" (100mm) (SPECIAL)
  - 46 205001-D4 SLOPE STEPS DETAIL
  - 47 606001-D4 CONCRETE CURB, TYPE B (MODIFIED)
  - 48-73 CROSS SECTIONS

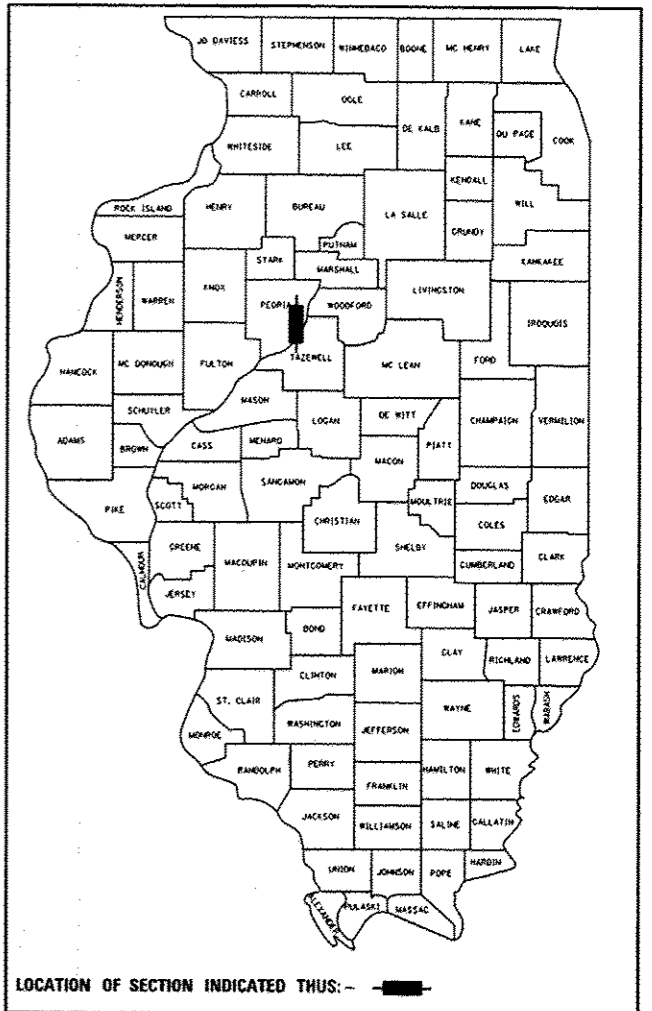
- HIGHWAY STANDARDS DESCRIPTION**
- | NO.    | DESCRIPTION   |
|--------|---|
| 000001 | -06 STANDARD SYMBOLS, ABBREVIATIONS, AND PATTERNS                 |
| 001001 | -02 AREAS OF REINFORCEMENT BARS                                   |
| 001006 | DECIMAL OF AN INCH AND OF A FOOT                                  |
| 280001 | -07 TEMPORARY EROSION CONTROL SYSTEMS                             |
| 424001 | -07 PERPENDICULAR CURB RAMPS FOR SIDEWALKS                        |
| 542401 | -01 METAL END SECTION FOR PIPE CULVERTS                           |
| 602301 | -03 INLET -TYPE A   |
| 604036 | -02 GRATE TYPE 8  |
| 606001 | -05 CONCRETE CURB TYPE B AND COMBINATION CONCRETE CURB AND GUTTER |
| 606101 | -04 TYPE A GUTTER (INLET, OUTLET & ENTRANCE)                      |
| 701301 | -04 LANE CLOSURE, 2L, 2W, SHORT TIME OPERATIONS                   |
| 701311 | -03 LANE CLOSURE, 2L, 2W, MOVING OPERATIONS - DAY ONLY            |
| 701501 | -06 URBAN LANE CLOSURE, 2L, 2W, UNDIVIDED                         |
| 701801 | -05 SIDEWALK, CORNER OR CROSSWALK CLOSURE                         |
| 701901 | -02 TRAFFIC CONTROL DEVICES                                       |
| 720001 | -01 SIGN PANEL MOUNTING DETAILS                                   |
| 720016 | -03 MAST ARM MOUNTED STREET NAME SIGNS                            |
| 780001 | -03 TYPICAL PAVEMENT MARKINGS                                     |
| 781001 | -03 TYPICAL APPLICATIONS RAISED REFLECTIVE PAVEMENT MARKERS       |
| 805001 | -01 ELECTRICAL SERVICE INSTALLATION DETAILS                       |
| 814001 | -02 HANDHOLES   |
| 873001 | -02 TRAFFIC SIGNAL GROUNDING & BONDING                            |
| 877001 | -05 STEEL MAST ARM ASSEMBLY AND POLE 16' THROUGH 55'              |
| 878001 | -09 CONCRETE FOUNDATION DETAILS                                   |
| 880006 | -01 TRAFFIC SIGNAL MOUNTING DETAILS                               |

PROJECT BEGINS AT  
GLEN AVENUE  
STA. 352+04.83

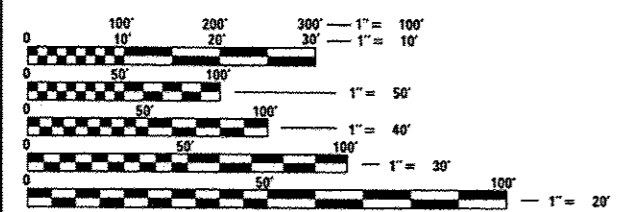
C-94-030-13 R.8.E. 4TH P.M.



PROPOSED IMPROVEMENT: THIS PROJECT CONSISTS OF THE CONSTRUCTION OF 1.99 MILES OF BICYCLING TRAIL ALONG THE FORMER PEORIA AND PEORIA HEIGHTS RAILROAD SERVICE FROM GLEN AVE. TO SPRINGDALE CEMETERY. CONSTRUCTION CONSISTS OF EARTHWORK, HOT-MIX ASPHALT PAVEMENT, CONCRETE SIDEWALK, AND TRAIL SIGNING.



PROJECT ENDS  
AT HARVARD AVENUE  
STA. 458+84.26



FULL SIZE PLANS HAVE BEEN PREPARED USING STANDARD ENGINEERING SCALES. REDUCED SIZED PLANS WILL NOT CONFORM TO STANDARD SCALES. IN MAKING MEASUREMENTS ON REDUCED PLANS, THE ABOVE SCALES MAY BE USED.

J.U.L.I.E.  
JOINT UTILITY LOCATION INFORMATION FOR EXCAVATION  
1-800-892-0123  
OR 811

**MAURER-STUTZ**  
ENGINEERS SURVEYORS  
3116 DRIES LN STE 100  
PEORIA, ILLINOIS 61604  
PH. (309) 693-7615  
FAX (309) 693-7616  
PROFESSIONAL DESIGN FIRM #184-005754  
PROJECT ENGINEER: JEFF SPILLER  
PROJECT MANAGER: RICK ANDERSON

GROSS LENGTH = 10526.7 FT. = 1.99 MILE  
NET LENGTH = 10526.7 FT. = 1.99 MILE  
FUNCTIONAL CLASSIFICATION: BIKEWAY  
DESIGN SPEED: 20 M.P.H.  
DESIGN GUIDELINES: BUREAU OF LOCAL ROADS & STREETS MANUAL

ENGINEER'S SIGNATURE BOX  
JEFFRY D. SPILLER  
062-05766  
LICENSED PROFESSIONAL ENGINEER  
STATE OF ILLINOIS  
SIGNED 4/5/13  
LISC. EXP. DATE: 11/30/2013

APPROVED  
*April 2, 2013*  
*Bonnie W. Noble*  
EXEC. DIRECTOR, PARK DISTRICT OF PEORIA, IL

PASSED 04.17.2013  
*[Signature]*  
DISTRICT FOUR ENGINEER OF  
LOCAL ROADS AND STREETS  
RELEASING FOR  
BID BASED ON  
LIMITED REVIEW  
APR 19 2013  
*[Signature]*  
DEPUTY DIRECTOR OF HIGHWAYS,  
REGION THREE ENGINEER  
STATE OF ILLINOIS  
DEPARTMENT OF TRANSPORTATION

CONTRACT NO. 89639