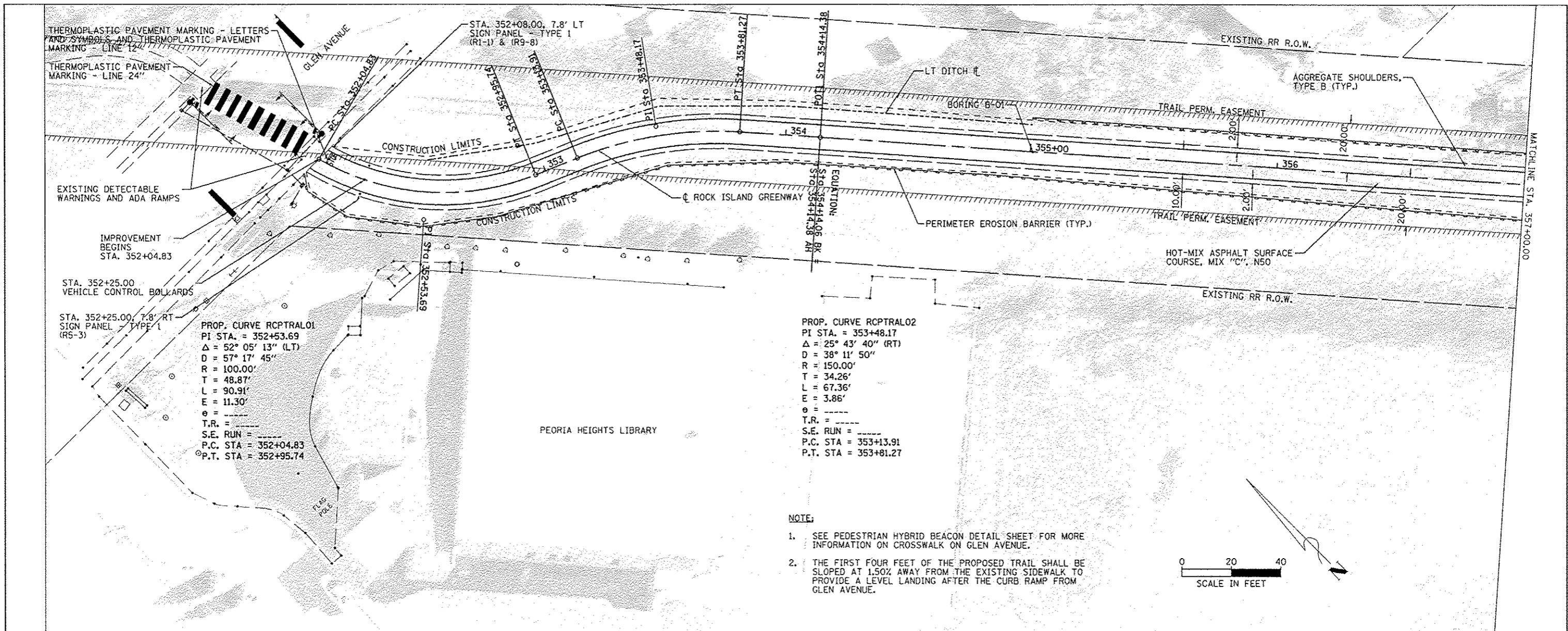
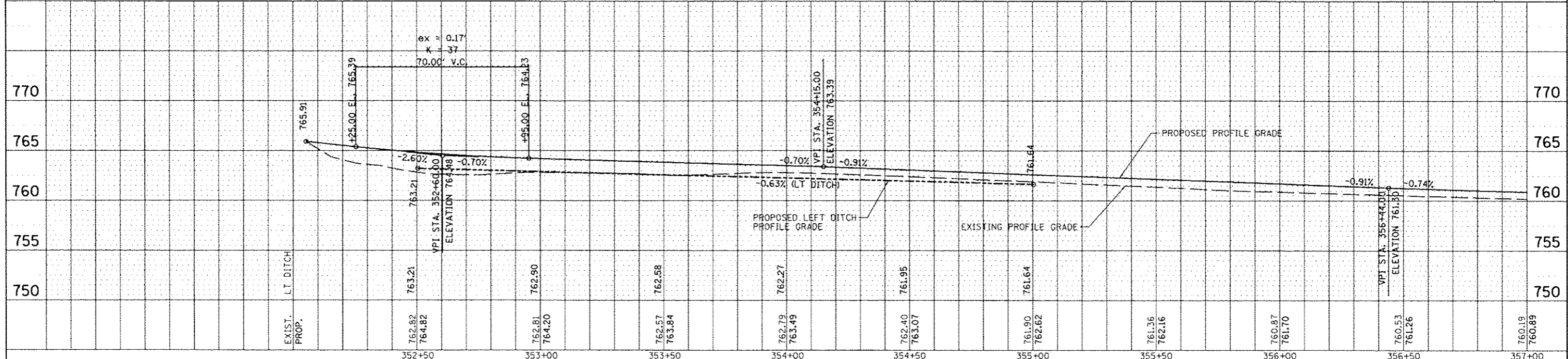


DATE	
BY	
REVISION	
NO.	
DATE	
BY	
REVISION	
NO.	
DATE	
BY	
REVISION	
NO.	

DATE	
BY	
REVISION	
NO.	
DATE	
BY	
REVISION	
NO.	
DATE	
BY	
REVISION	
NO.	



- NOTE:
- SEE PEDESTRIAN HYBRID BEACON DETAIL SHEET FOR MORE INFORMATION ON CROSSWALK ON GLEN AVENUE.
 - THE FIRST FOUR FEET OF THE PROPOSED TRAIL SHALL BE SLOPED AT 1.50% AWAY FROM THE EXISTING SIDEWALK TO PROVIDE A LEVEL LANDING AFTER THE CURB RAMP FROM GLEN AVENUE.



FILE NAME	USER NAME	DESIGNED	REVISED	 PEORIA PARK DISTRICT	ROCK ISLAND GREENWAY (GLEN AVE TO WAR MEMORIAL DR) PLAN AND PROFILE STA. 352 + 04.83 TO STA. 357 + 00.00		F.A. RTE.	SECTION	COUNTY	TOTAL SHEETS	SHEET NO.
5:\237\2012\23712063.00 (Trail Glen to Spr...	gddalm\CA00\CA00 Sheets\048\039-shi-pln-prf	DRAWN	REVISED		11-P4002-04-81	PEORIA	73	16			
MAURER-STUTZ ENGINEERS SURVEYORS	PLOT SCALE = 40.0000 1" = 40.00'	CHECKED	REVISED		CONTRACT NO. 89639		ILLINOIS FED. AID PROJECT				
PLOT DATE 4/10/2013	DATE	REVISED	REVISED		SCALE:	SHEET 1 OF SHEETS	STA. TO STA.				