

ROUTE NO.	SECTION	COUNTY	TOTAL SHEETS	SHEET NO.
T.R. 131	10-15145-00-BR	VERMILION	20	1
FED. ROAD DIST. NO.		ILLINOIS CONTRACT NO. 91477		

STATE OF ILLINOIS
DEPARTMENT OF TRANSPORTATION
DIVISION OF HIGHWAYS

PLANS FOR PROPOSED
SURFACE TRANSPORTATION PROGRAM – BRIDGE

PROJECT BROS-0183(315)
SECTION 10-15145-00-BR
PILOT ROAD DISTRICT
VERMILION COUNTY
T.R. 131 / 2800N
PROPOSED STRUCTURE NO. 092-3523
JOB NO. C-95-332-12

INDEX OF SHEETS

SHEET NO.	DESCRIPTION
1.	COVER SHEET
2.	SUMMARY OF QUANTITIES AND GENERAL NOTES
3.	TYPICAL CROSS SECTIONS
4.	PLAN AND PROFILE
5-11.	STATION CROSS SECTIONS
12-18.	BRIDGE PLANS
19-20.	BORINGS

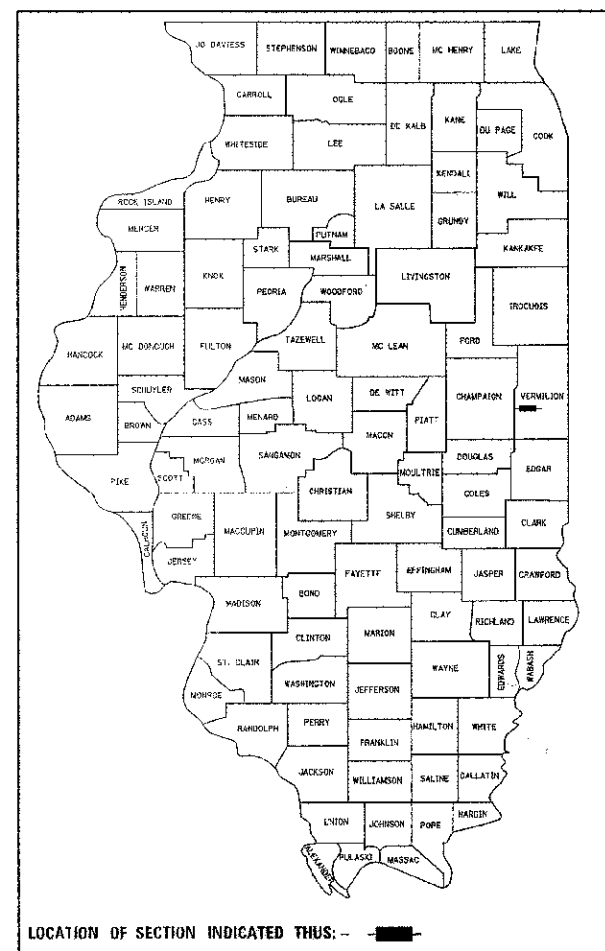
HIGHWAY STANDARDS:

000001-06	STANDARD SYMBOLS, ABBREVIATIONS, AND PATTERNS.
280001-07	TEMPORARY EROSION CONTROL SYSTEMS
515001-03	NAME PLATE FOR BRIDGES
635006-03	REFLECTOR AND TERMINAL MARKER PLACEMENT
701901-02	TRAFFIC CONTROL DEVICES
BLR 21-9	TYPICAL APPLICATION OF TRAFFIC CONTROL DEVICES FOR CONSTRUCTION ON RURAL LOCAL HIGHWAYS

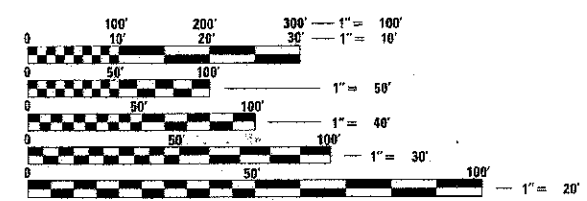
UTILITIES

FRONTIER COMMUNICATIONS
104 MULBERRY
NORMAL, IL 61761
217-463-3129
ATTN: MICHELE LEWSADER

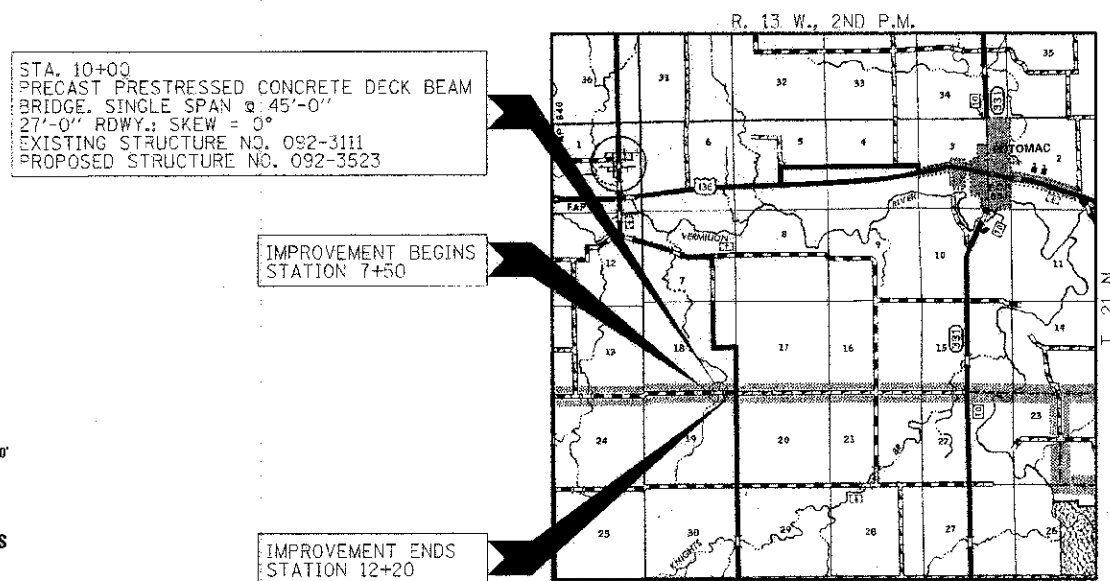
EASTERN ILLINI ELECTRIC COOP.
330 W OTTAWA ST
PO BOX 96
PAXTON IL 60957
217-379-2131
ATTN: ALAN SCHWEIGHART



FUNCTIONAL CLASSIFICATION: LOCAL ROAD (0-250 ADT)
DESIGN SPEED: 30 MPH
DESIGN TRAFFIC: 50 ADT



FULL SIZE PLANS HAVE BEEN PREPARED USING STANDARD ENGINEERING SCALES. REDUCED SIZED PLANS WILL NOT CONFORM TO STANDARD SCALES. IN MAKING MEASUREMENTS ON REDUCED PLANS, THE ABOVE SCALES MAY BE USED.



LOCATION MAP

APPROXIMATE SCALE: 0 1 MILE
NET LENGTH OF SECTION = 470 FEET = 0.089 MILES



ILLINOIS DEPARTMENT OF TRANSPORTATION

APPROVED *March 2 2013*
Douglas R. Alach
COUNTY ENGINEER

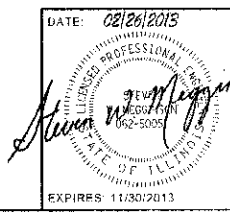
APPROVED *RTH 3/2 2013*
TOWNSHIP COMMISSIONER

PASSED *March 22 2013*
Steve Decker
DISTRICT FIVE ENGINEER OF LOCAL ROADS & STREETS

Releasing For Bid Based on Limited Review: *03/20* 2013

Joseph R. Coursey
DEPUTY DIRECTOR OF HIGHWAYS
REGION THREE ENGINEER
STATE OF ILLINOIS
DEPARTMENT OF TRANSPORTATION

CONTRACT NO. 91477



HAMPTON, LENZINI AND RENWICK, INC.
CIVIL ENGINEERS • STRUCTURAL ENGINEERS • LAND SURVEYORS
3085 STEVENSON DRIVE, SUITE 201
SPRINGFIELD, ILLINOIS 62703
217.546.3400 www.hlrengineering.com

PROJECT NUMBER: 11.0265.130 DATE: 02/28/13