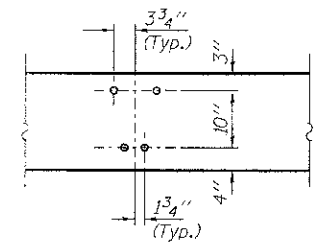
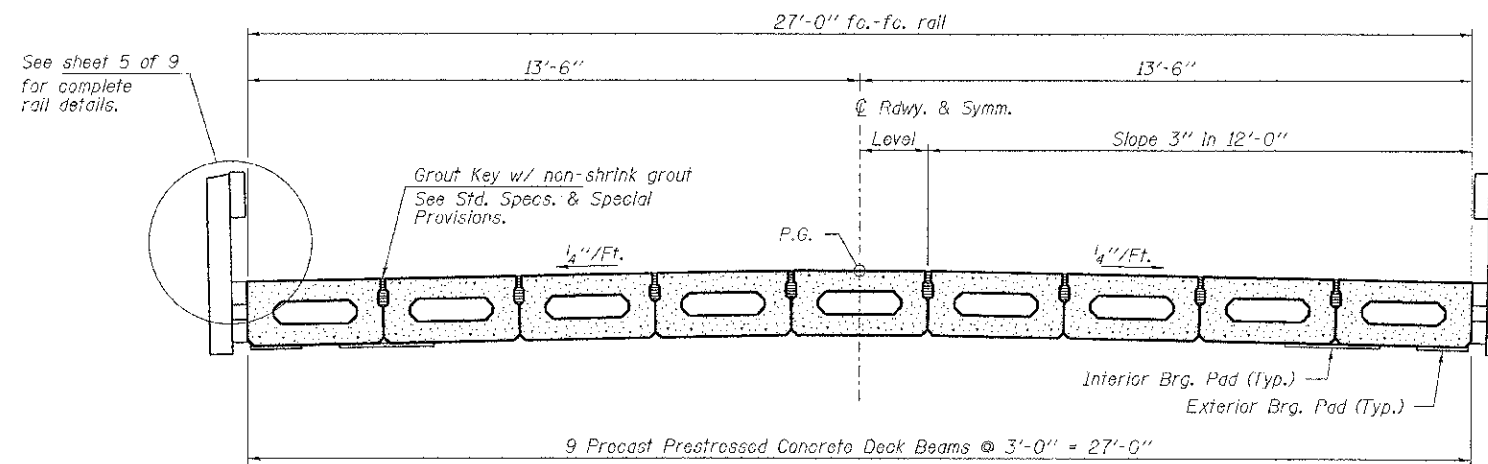


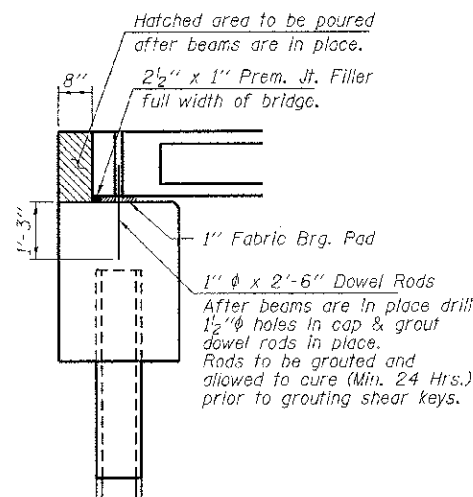
ELEVATION
Showing Rail Post Spaces
See sheet 5 of 8 for Railing Details.



DETAIL A



CROSS SECTION
See sheets 2 & 3 of 9 for Superstructure.



SECTION AT ABUTMENTS
@ Rt. L's

FILE NAME = 112295-shr-bridge.dgn	USER NAME =	DESIGNED - A.S.L.	REVISED -	STATE OF ILLINOIS VERMILION COUNTY HIGHWAY DEPARTMENT	SUPERSTRUCTURE DETAILS STRUCTURE NO. 092-3523	T.R.	SECTION	COUNTY	TOTAL SHEET NO.	
HAMPTON, LENZIN AND REHWICK, INC. 3360 STEVENSON DRIVE, SUITE 101 SPRINGFIELD, ILL. 62765	PLOT SCALE =	CHECKED - S.W.M.	REVISED -			13	10-15145-00-BR	VERMILION	20	15
ILLINOIS PROFESSIONAL DESIGN FIRM L.S. / P.E. / S.E. / C.E.P.	PLOT DATE = 2/26/2013	DRAWN - D.A.B.	REVISED -			PILGRIM ROAD DISTRICT		CONTRACT NO. 91477		
		CHECKED - S.W.M.	REVISED -			SHEET NO. 4 OF 9 SHEETS		ILLINOIS FED. AID PROJECT		