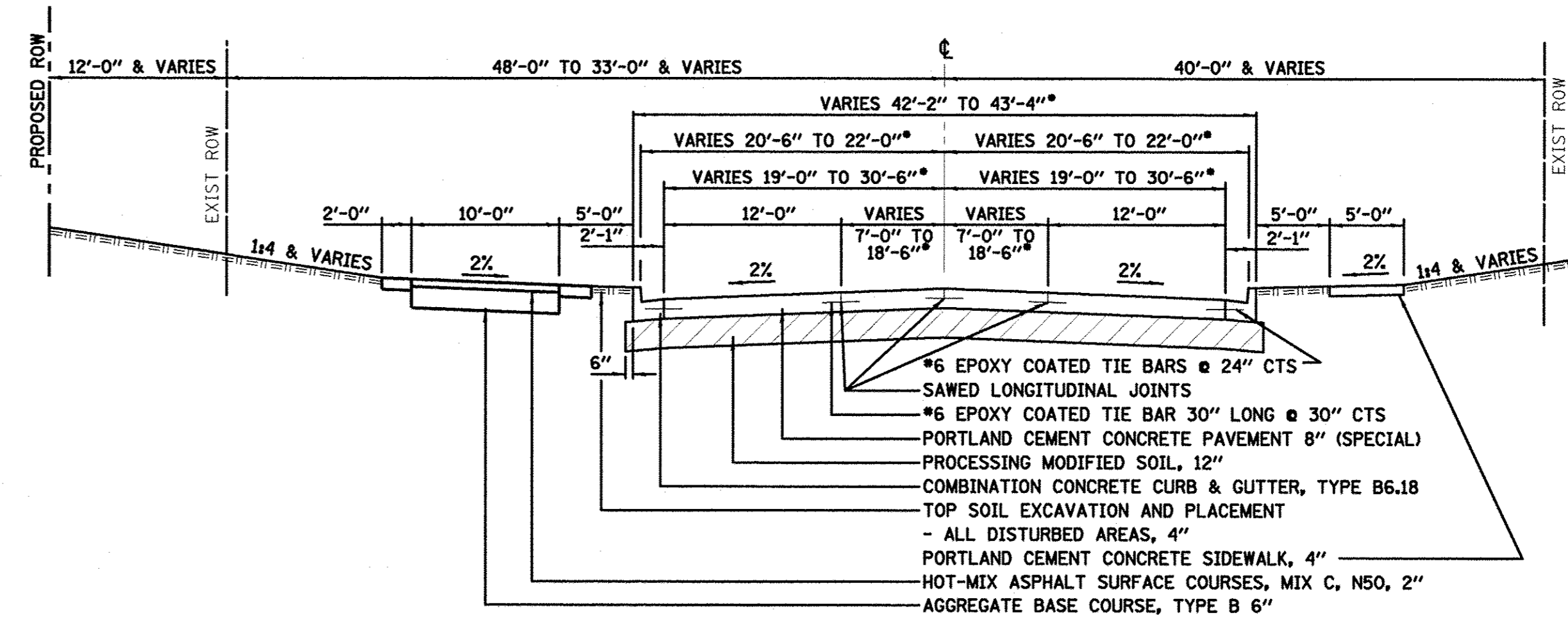
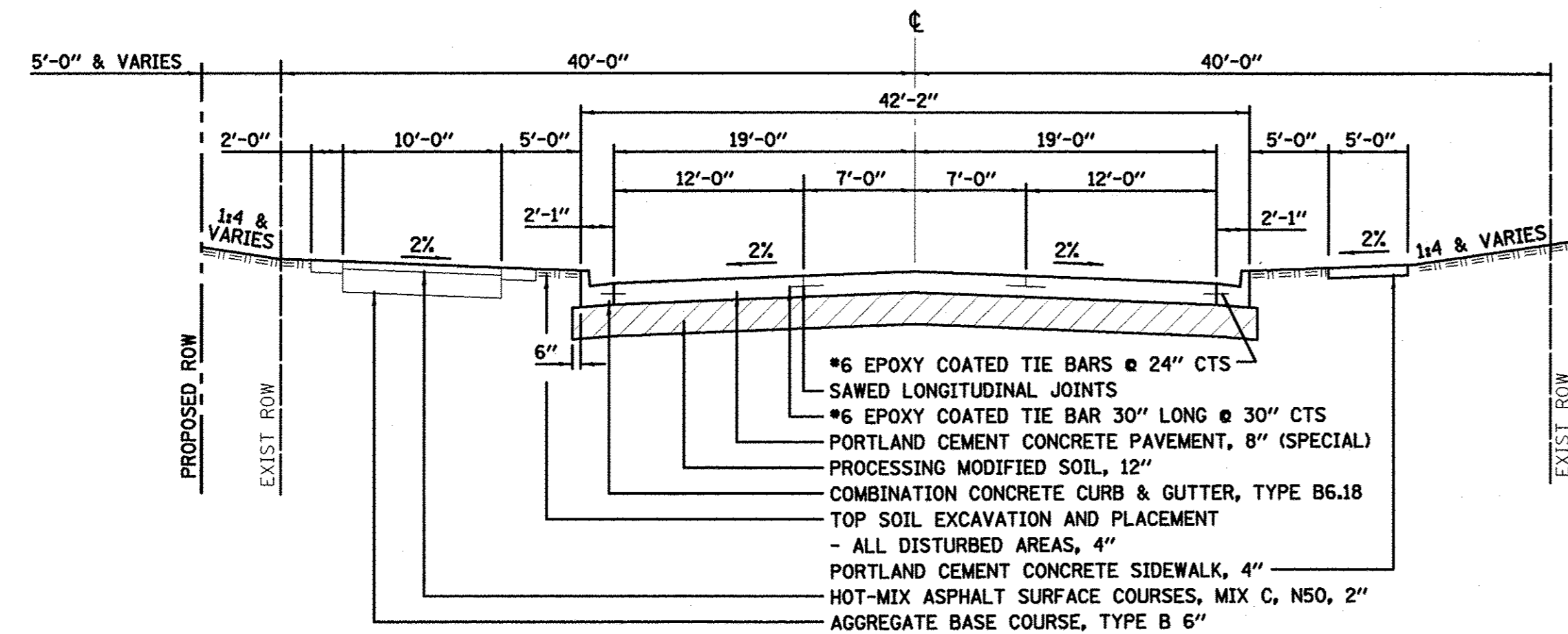


PROPOSED TYPICAL CROSS SECTION ①
 NORTHTOWN ROAD
 STA 30+73.42 TO STA 36+65.00

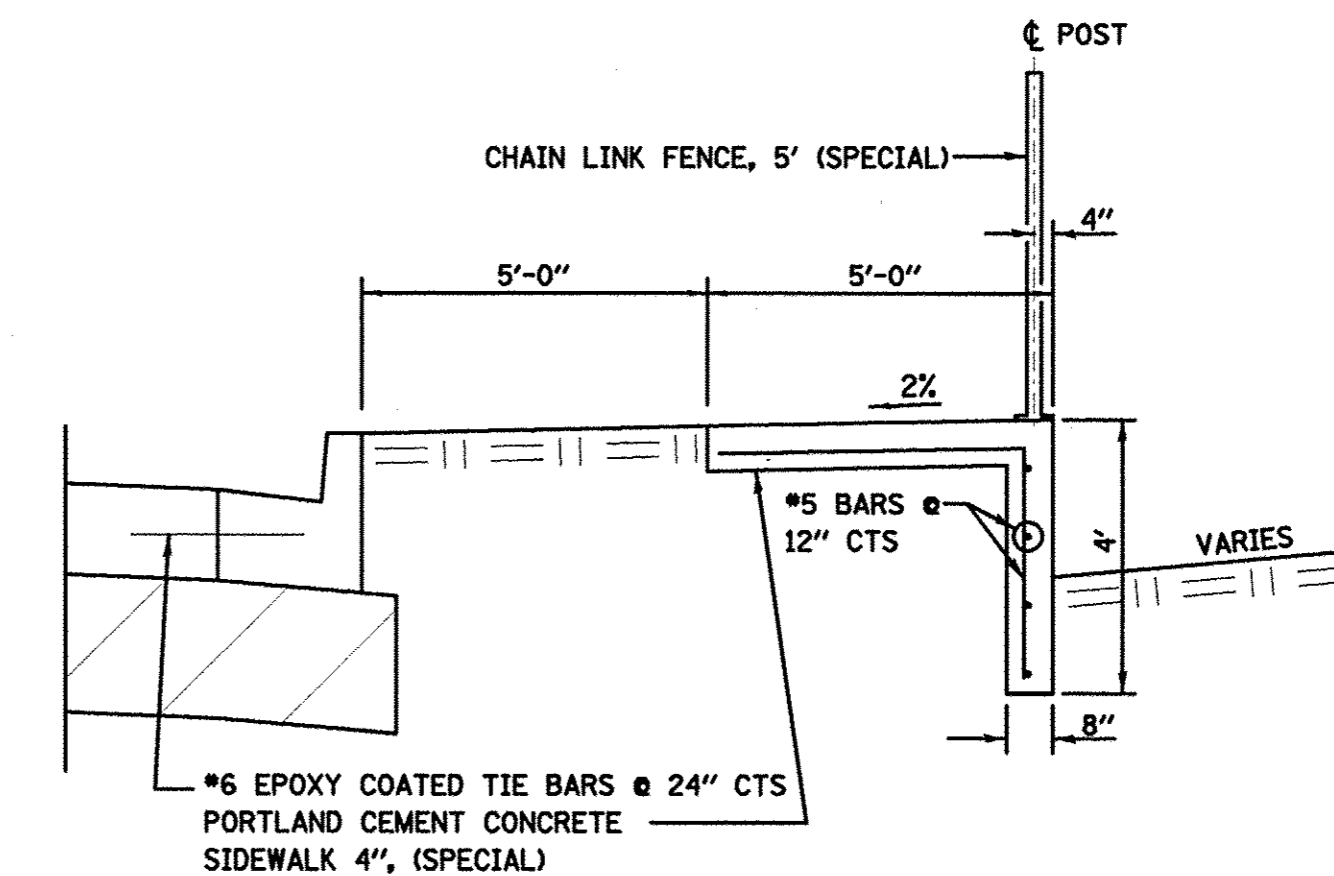


* VARIES FROM STA 86+16.31 TO STA 91+33.87
PROPOSED TYPICAL CROSS SECTION ④
 NORTHTOWN ROAD
 STA 42+83.17 TO STA 91+33.87

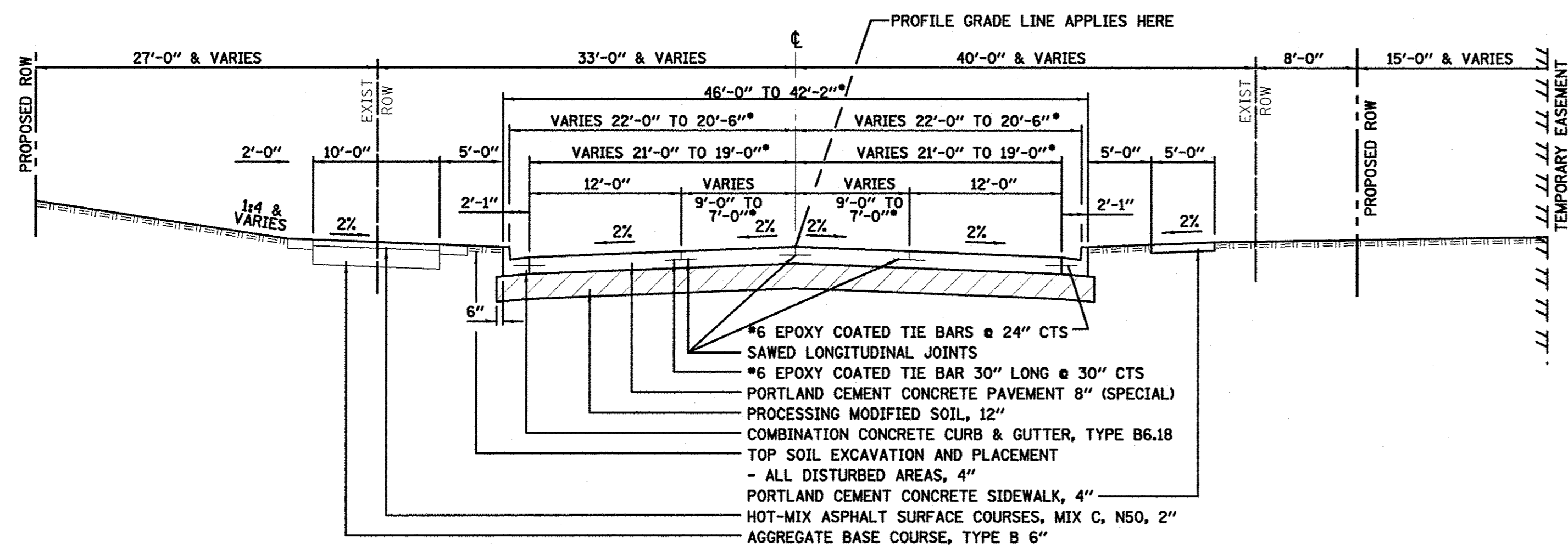


PROPOSED TYPICAL CROSS SECTION ②
 NORTHTOWN ROAD
 STA 36+65.00 TO STA 36+96.78

NOTE: PAVEMENT VARIES THROUGH THE INTERSECTION
 STA 36+96.78 TO STA 39+51.38

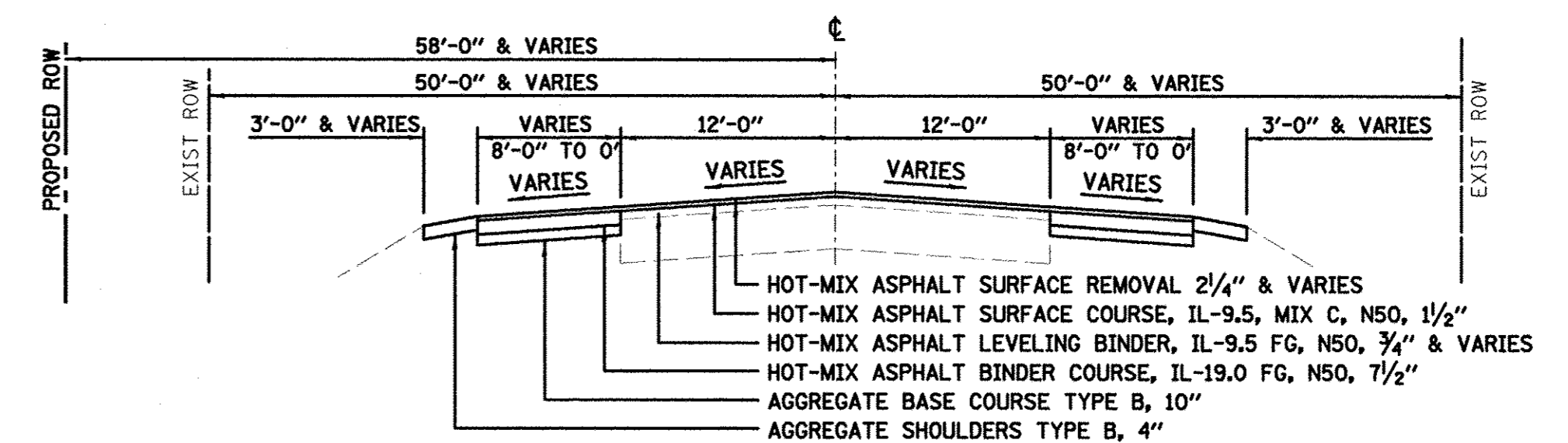


P.C.C. SIDEWALK 4 INCH SPECIAL (AT CULVERT)
 NORTHTOWN ROAD
 STA 81+89.97 TO STA 81+94.97
 STA 82+10.39 TO STA 82+15.39



* VARIES FROM STA 41+93.15 TO STA 42+83.17

PROPOSED TYPICAL CROSS SECTION ③
 NORTHTOWN ROAD
 STA 39+51.38 TO STA 42+83.17



PROPOSED TYPICAL CROSS SECTION ⑤
 LINDEN STREET
 STA 3+03.44 TO STA 17+27.39

MIXTURE USE	LINDEN STREET			BIKE TRAIL
	BINDER	LEVEL BINDER	SURFACE	SURFACE
AC/PG	PG 64-22	PG 64-22	PG 64-22	PG 64-22
RAP % (MAX)	*	*	*	*
DESIGN AIR Voids	4.0% @ NDES=50	4.0% @ NDES=50	4.0% @ NDES=50	4.0% @ NDES=50
MIX COMP (GRADATION)	IL-19.0 FG	IL-9.5 FG	IL-9.5	IL-9.5
FRICTION AGGREGATE	-	-	MIX C	MIX C

* SEE RAP/RAS BDE SPECIAL PROVISION

DESIGNED - PJM
 DRAWN - JJO/LAT
 CHECKED - PJM
 DATE - 01/18/13

REVISED -
 REVISED -
 REVISED -
 REVISED -

**TOWN OF NORMAL
 NORTHTOWN ROAD FROM
 1200' WEST OF LINDEN STREET TO TOWANDA AVENUE**

TYPICAL SECTIONS

SHEET OF SHEETS STA. TO STA.

F.A.U. RTE.	SECTION	COUNTY	TOTAL SHEETS	SHEET NO.
6375	00-00206-00-RP	McLEAN	129	9
CONTRACT NO. 91479				