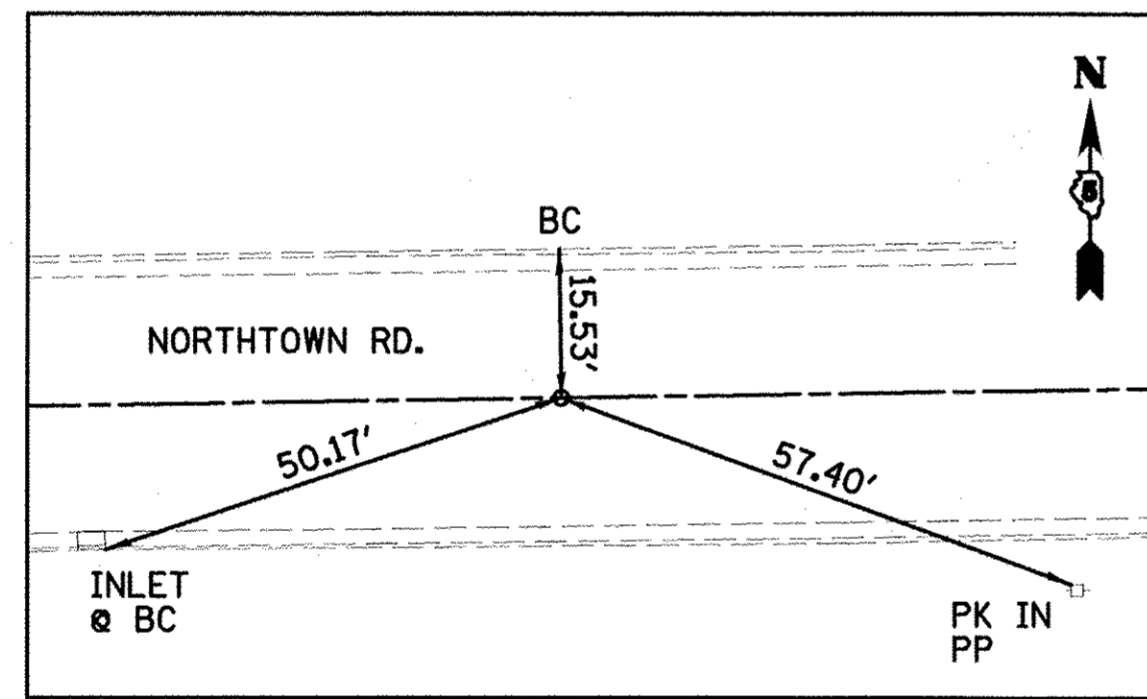
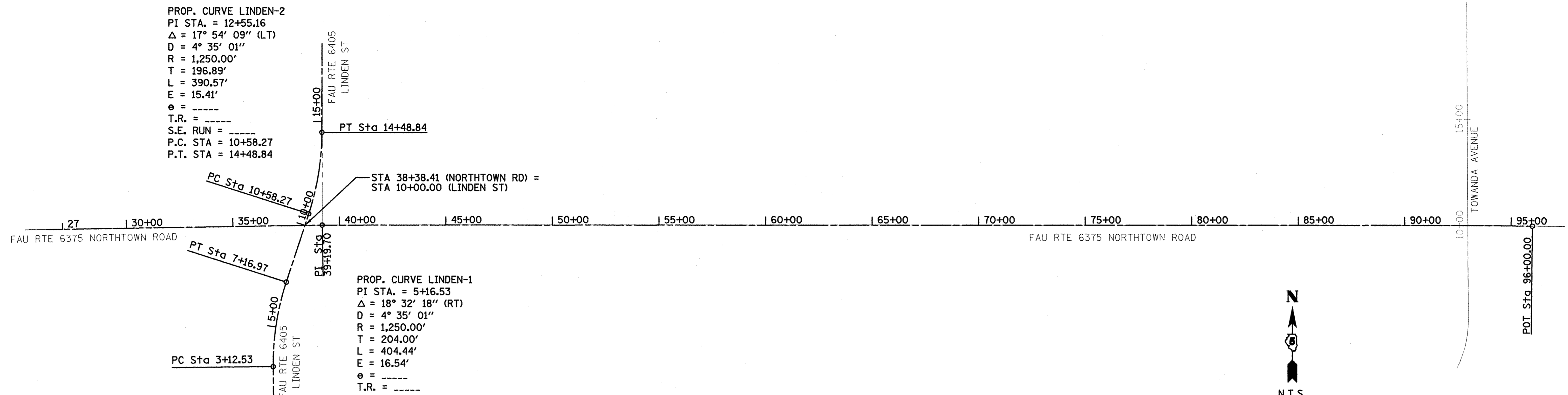
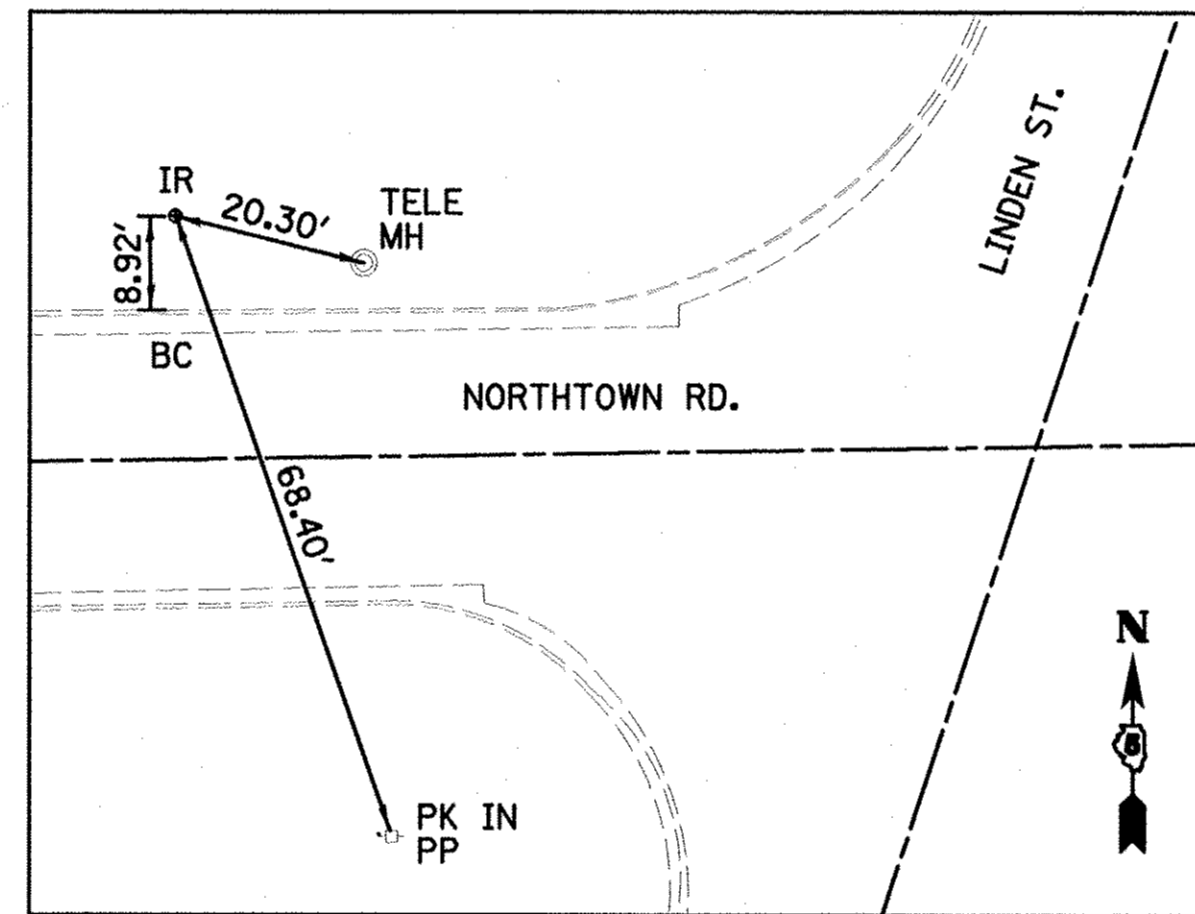


PROP. CURVE LINDEN-2
 PI STA. = 12+55.16
 $\Delta = 17^\circ 54' 09''$ (LT)
 $D = 4^\circ 35' 01''$
 $R = 1,250.00'$
 $T = 196.89'$
 $L = 390.57'$
 $E = 15.41'$
 $e =$
 T.R. =
 S.E. RUN =
 P.C. STA = 10+58.27
 P.T. STA = 14+48.84

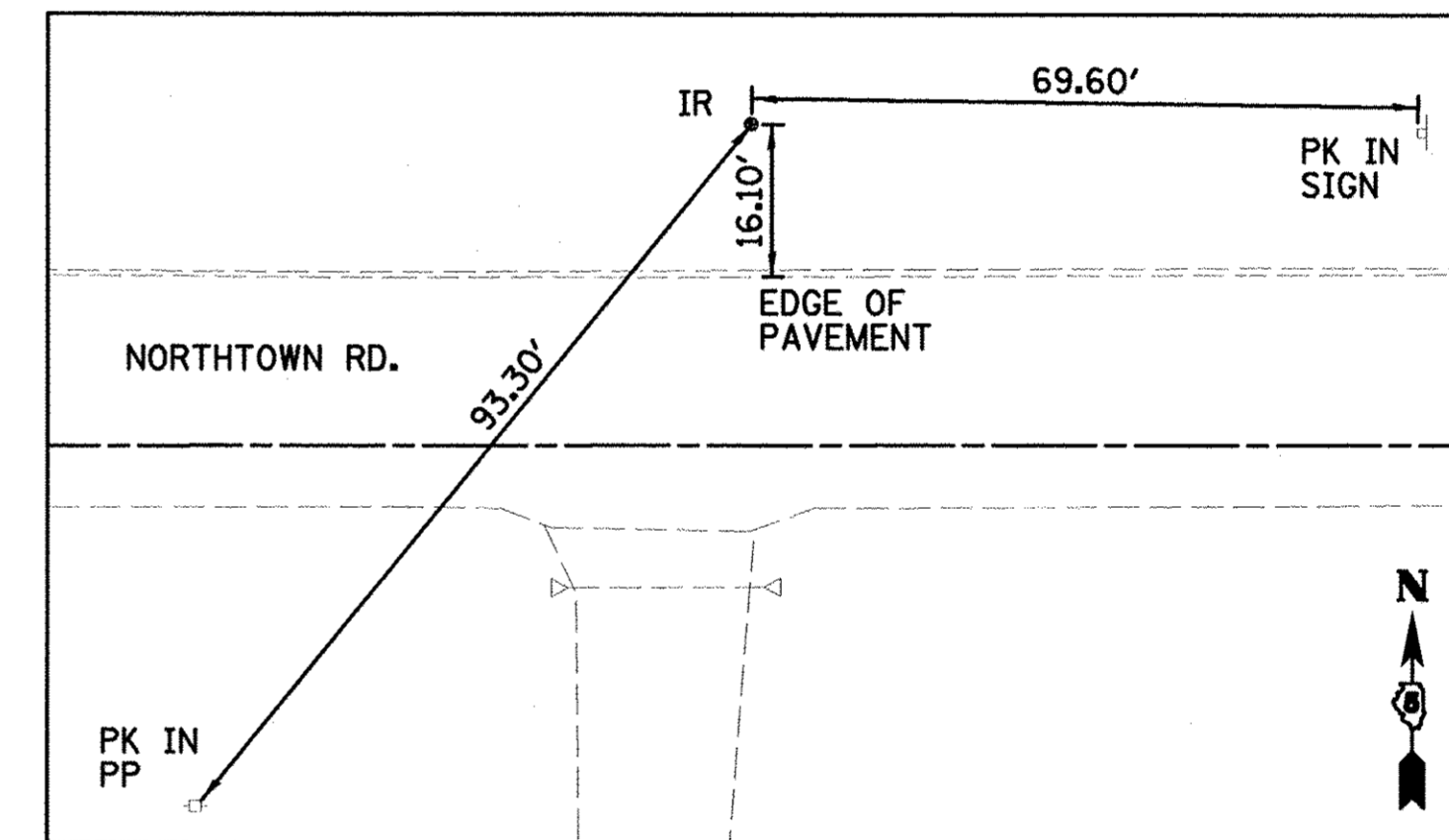
PROP. CURVE LINDEN-1
 PI STA. = 5+16.53
 $\Delta = 18^\circ 32' 18''$ (RT)
 $D = 4^\circ 35' 01''$
 $R = 1,250.00'$
 $T = 204.00'$
 $L = 404.44'$
 $E = 16.54'$
 $e =$
 T.R. =
 S.E. RUN =
 P.C. STA = 3+12.53
 P.T. STA = 7+16.97



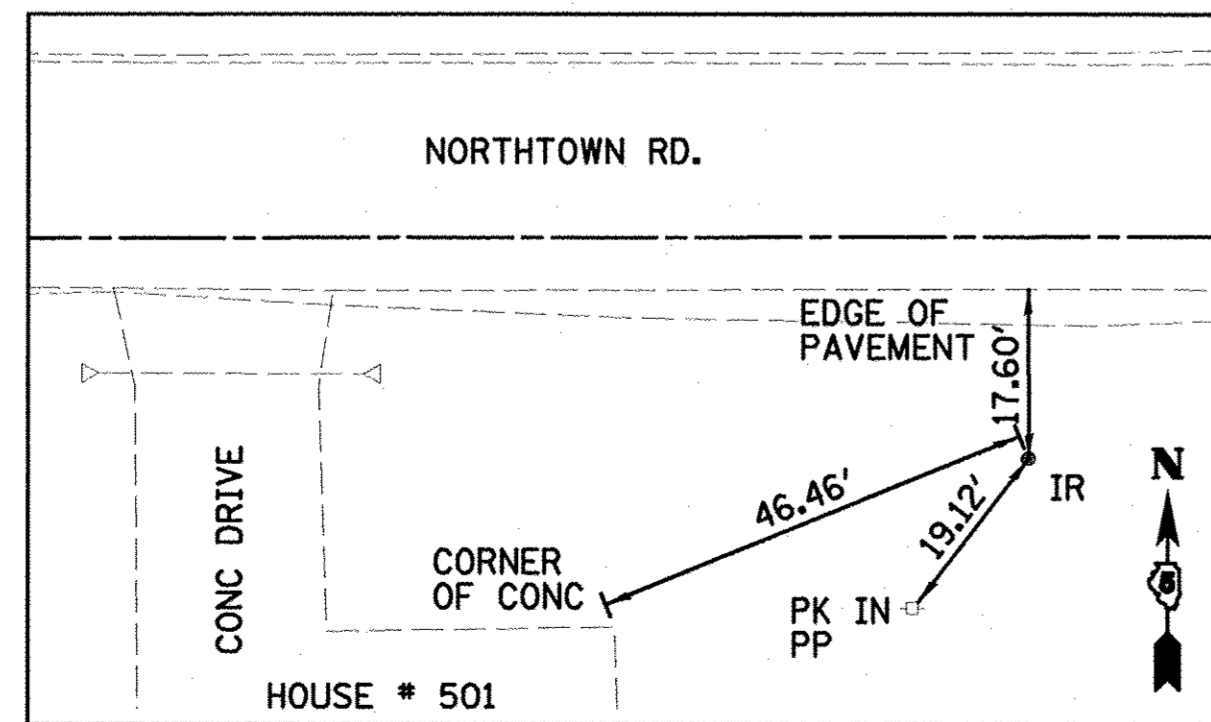
NORTHTOWN ROAD
 STA 35+00.00
 $N = 1413805.796$
 $E = 803317.417$



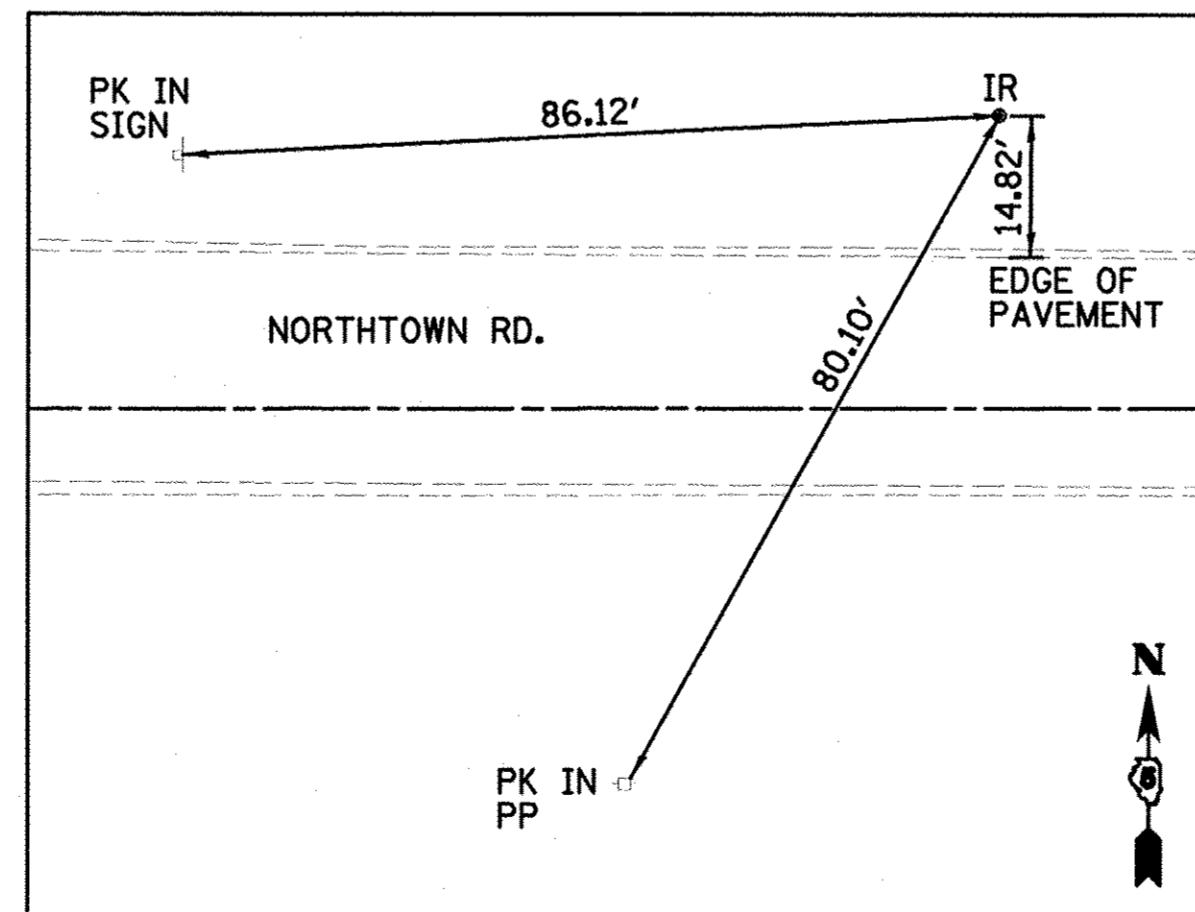
CONTROL POINT #7212
 STA 37+49.29, 25.43' LT
 $N = 1413835.120$
 $E = 803566.281$



CONTROL POINT #37
 STA 46+03.35, 34.00' LT
 $N = 1413847.285$
 $E = 804420.674$



CONTROL POINT #35
 STA 57+50.85, 23.30' RT
 $N = 1413791.541$
 $E = 805568.248$



CONTROL POINT #34
 STA 64+70.49, 30.85' LT
 $N = 1413846.354$
 $E = 806287.764$

BENCHMARK
 STA 37+84.37, 33.60' RT
 " " " TOP OF HEADWALL
 ELEV=850.63

BENCHMARK
 STA 57+18.26, 33.42' RT
 " " " TOP OF FIRE HYDRANT
 ELEV=856.25

BENCHMARK
 STA 82+06.29, 32.82' RT
 " " " TOP CONG WALL
 ELEV=816.18

Farnsworth
 GROUP, INC.
 2709 McGraw Drive
 Bloomington, Illinois 61704
 309/893-9435, 309/893-1371 fax

DESIGNED - PJM
 DRAWN - JJO/LAT
 CHECKED - PJM
 DATE - 01/18/13

REVISED -
 REVISED -
 REVISED -
 REVISED -

**TOWN OF NORMAL
 NORTHTOWN ROAD FROM
 1200' WEST OF LINDEN STREET TO TOWANDA AVENUE**

ALIGNMENT, SURVEY TIES AND BENCHMARKS

SCALE: SHEET OF SHEETS STA. TO STA.

F.A.U. RTE.	SECTION	COUNTY	TOTAL SHEETS	SHEET NO.
6375	00-00206-00-RP	McLEAN	129	18
CONTRACT NO. 91479				

ILLINOIS FED. AID PROJECT