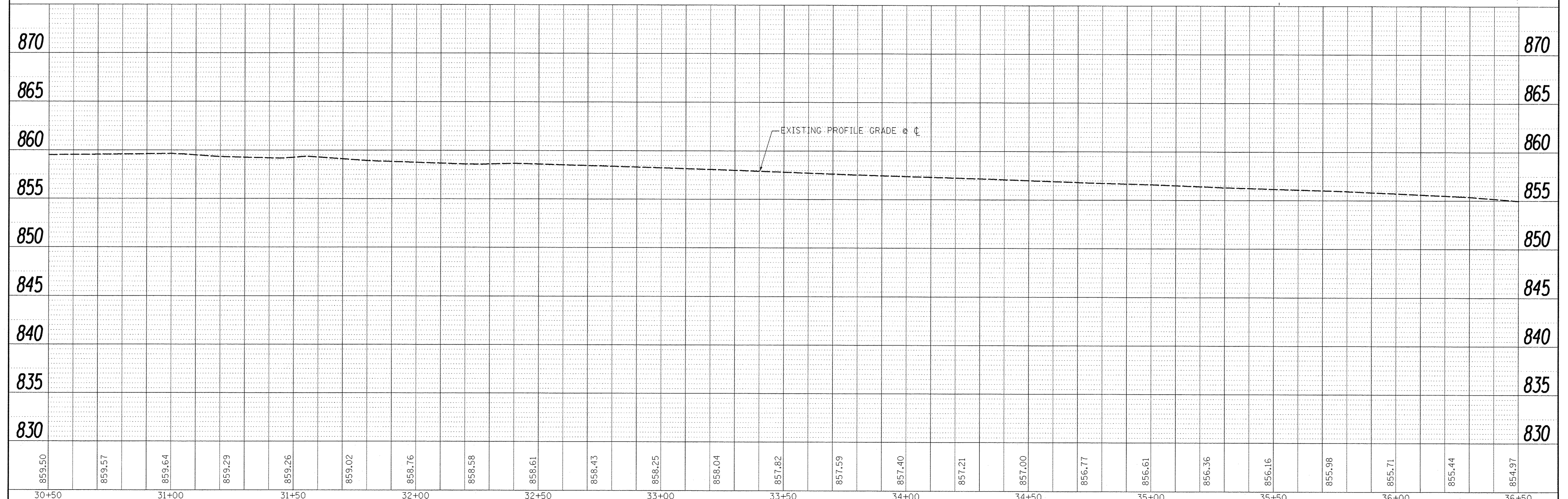
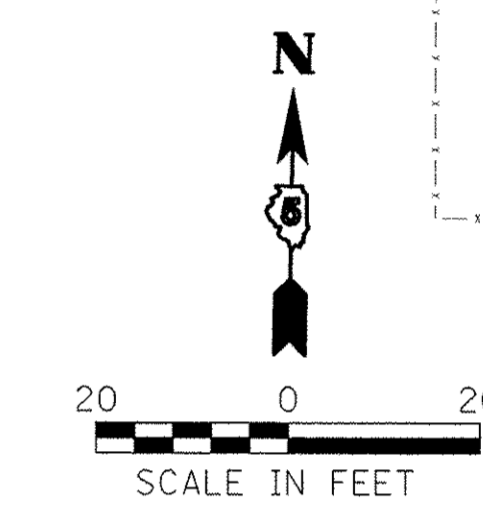
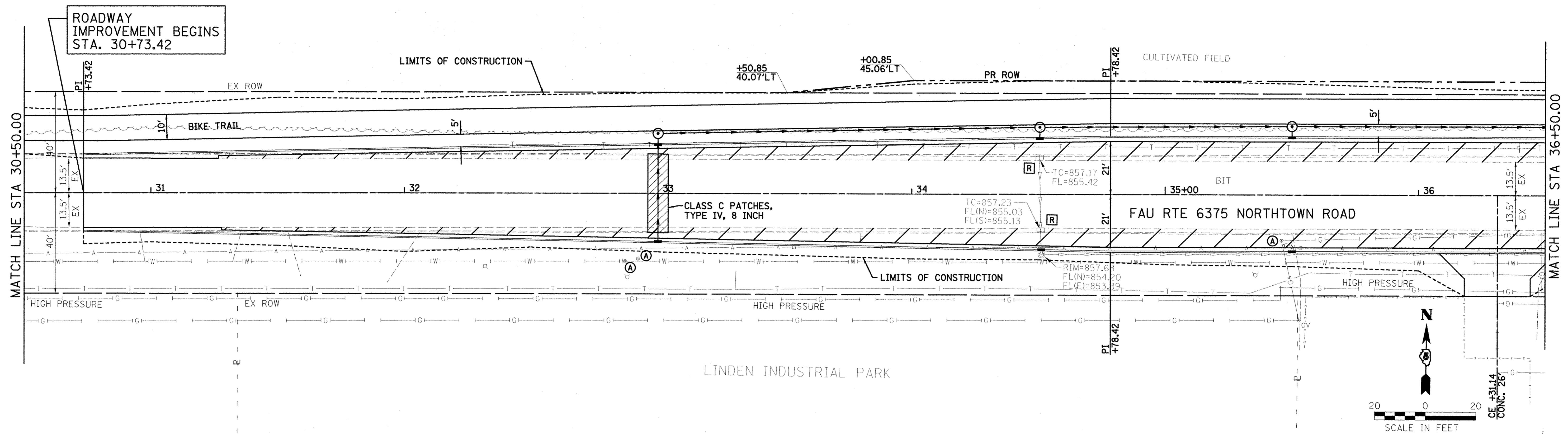


PLAN	SURVEYED	BY	DATE
NOTE BOOK	ALIGNED		
NO.	CHECKED		
	FILE		
	NO.		

PROFILE	SURVEYED	BY	DATE
NOTE BOOK	GRADES		
NO.	CHECKED		
	FILE		
	NO.		



859.50	859.57	859.64	859.29	859.26	859.02	858.76	858.58	858.61	858.43	858.25	858.04	857.82	857.59	857.40	857.21	857.00	856.77	856.61	856.36	856.16	855.98	855.71	855.44	854.97
30+50	31+00	31+50	32+00	32+50	33+00	33+50	34+00	34+50	35+00	35+50	36+00	36+50												

**Farnsworth GROUP, INC.**  
2709 McGraw Drive  
Bloomington, Illinois 61704  
309/863-8435, 309/863-1571 fax

DESIGNED - PJM  
DRAWN - JJO/LAT  
CHECKED - PJM  
DATE - 01/18/13

REVISIED -  
REVISIED -  
REVISIED -

**TOWN OF NORMAL  
NORTHTOWN ROAD FROM  
1200' WEST OF LINDEN STREET TO TOWANDA AVENUE**

**PLAN AND PROFILE**

SCALE: SHEET OF SHEETS STA. 30+50.00 TO STA. 36+50.00

F.A.U. RTE. 6375	SECTION 00-00206-00-RP	COUNTY McLEAN	TOTAL SHEETS 129	SHEET NO. 20
CONTRACT NO. 91479				ILLINOIS FED. AID PROJECT