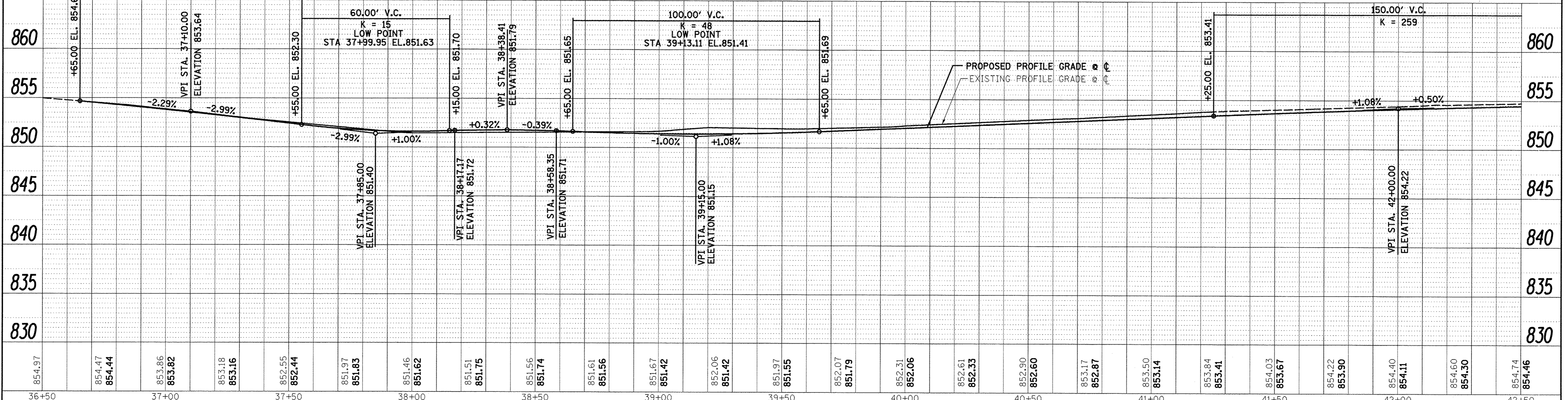
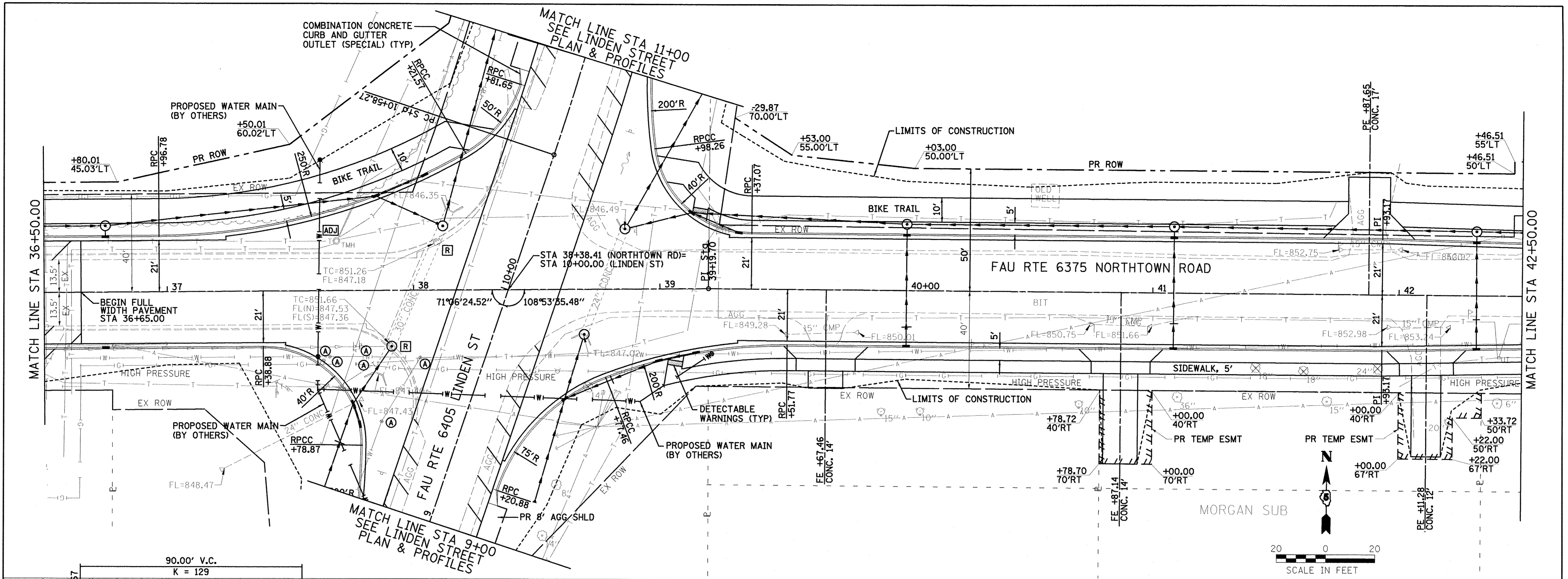


PLAN SURVEYED BY DATE
 PLOTTED BY
 CHECKED BY
 REVISIONS
 NO. DATE

PROFILE SURVEYED BY DATE
 PLOTTED BY
 CHECKED BY
 REVISIONS
 NO. DATE



Farnsworth GROUP, INC.
 2709 McGraw Drive
 Bloomington, Illinois 61704
 309/683-8435, 309/683-1571 fax

DESIGNED - PJM
 DRAWN - JJO/LAT
 CHECKED - PJM
 DATE - 01/18/13

REVISED -
 REVISED -
 REVISED -
 REVISED -

**TOWN OF NORMAL
 NORTHTOWN ROAD FROM
 1200' WEST OF LINDEN STREET TO TOWANDA AVENUE**

PLAN AND PROFILE
 SCALE: SHEET OF SHEETS STA. 36+50.00 TO STA. 42+50.00

F.A.U. RTE. 6375	SECTION 00-00206-00-RP	COUNTY McLEAN	TOTAL SHEETS 129	SHEET NO. 21
CONTRACT NO. 91479			ILLINOIS FED. AID PROJECT	