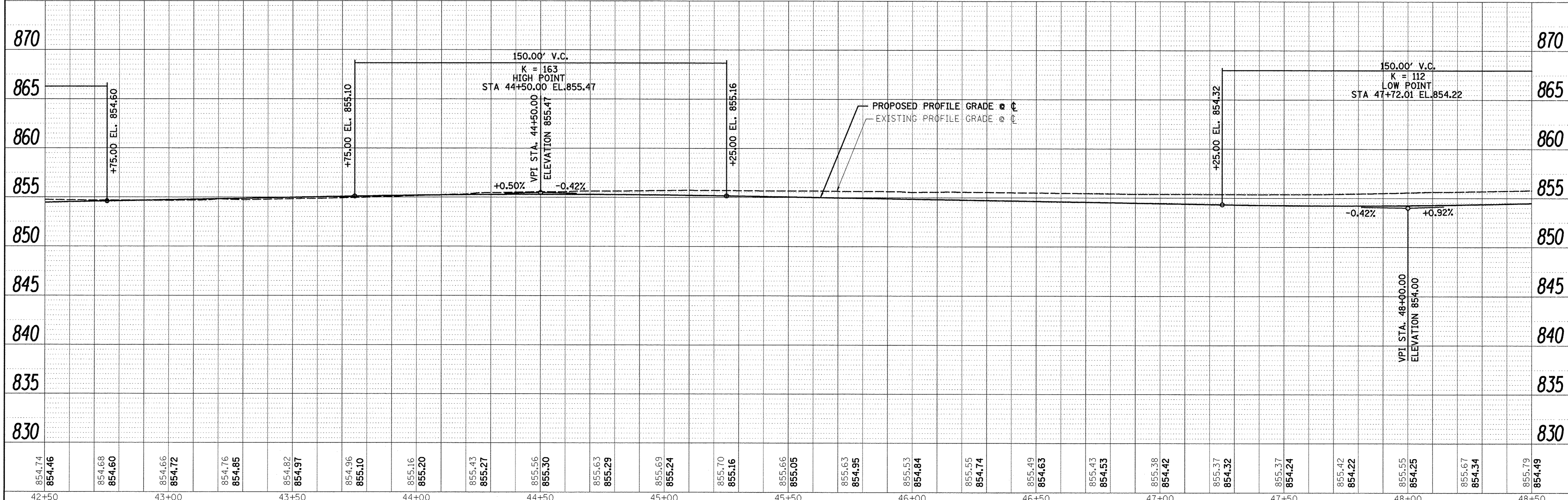
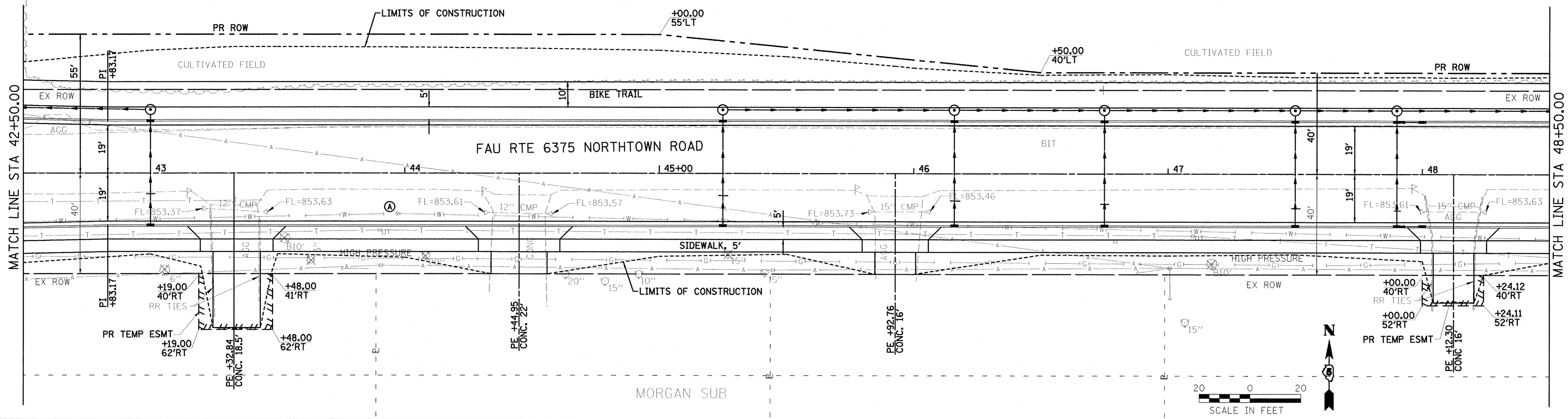


PLAN	SURVEYED	BY	DATE
	PLOTTED		
	GRADES CHECKED		
	STRUCTURE NOTATIONS CHECKED		
	NOTE BOOK NO.		
	CADD FILE NAME		

PROFILE	SURVEYED	BY	DATE
	PLOTTED		
	GRADES CHECKED		
	STRUCTURE NOTATIONS CHECKED		
	NOTE BOOK NO.		
	CADD FILE NAME		



854.74 854.46	854.68 854.60	854.66 854.72	854.76 854.85	854.82 854.97	854.96 855.10	855.16 855.20	855.43 855.27	855.56 855.30	855.63 855.29	855.69 855.24	855.70 855.16	855.66 855.05	855.63 854.95	855.53 854.84	855.55 854.74	855.49 854.63	855.43 854.53	855.38 854.42	855.37 854.32	855.37 854.24	855.42 854.22	855.55 854.25	855.67 854.34	855.79 854.49
42+50	43+00	43+50	44+00	44+50	45+00	45+50	46+00	46+50	47+00	47+50	48+00	48+50												

Farnsworth
GROUP, INC.
2709 McGraw Drive
Bloomington, Illinois 61704
309/663-8435, 309/663-1571 fax

DESIGNED - PJM
DRAWN - JJO/LAT
CHECKED - PJM
DATE - 01/18/13

REVISED -
REVISED -
REVISED -
REVISED -

**TOWN OF NORMAL
NORTHTOWN ROAD FROM
1200' WEST OF LINDEN STREET TO TOWANDA AVENUE**

PLAN AND PROFILE
SCALE: SHEET OF SHEETS STA. 42+50.00 TO STA. 48+50.00

F.A.U. RTE. 6375	SECTION 00-00206-00-RP	COUNTY McLEAN	TOTAL SHEETS 129	SHEET NO. 22
CONTRACT NO. 91479			ILLINOIS FED. AID PROJECT	