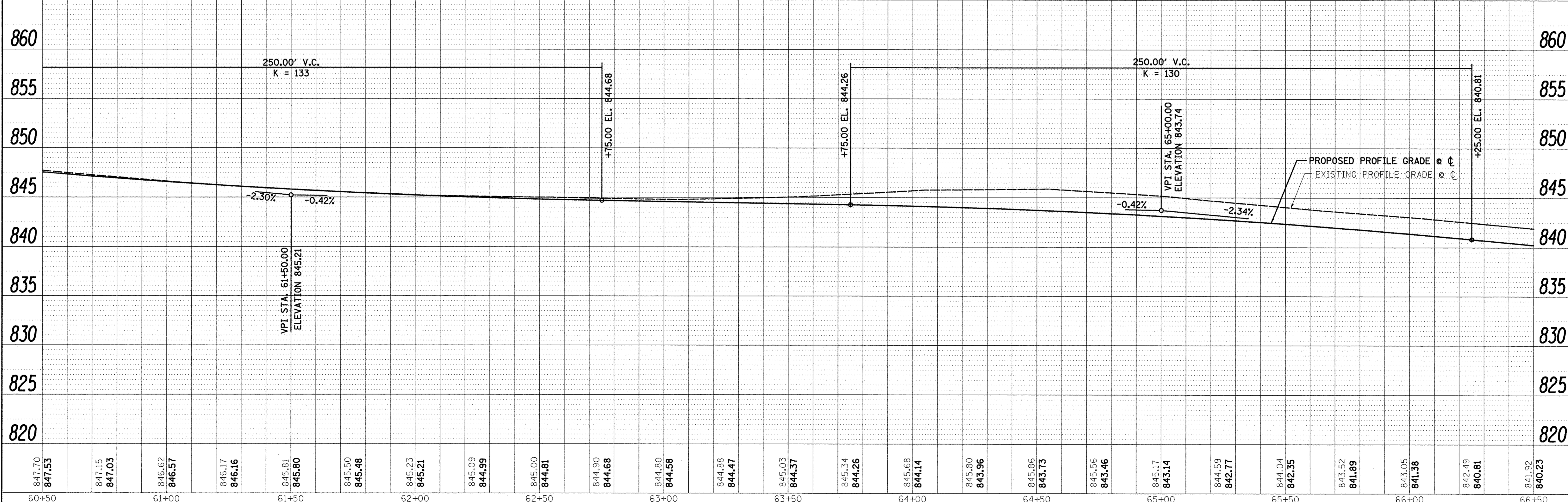
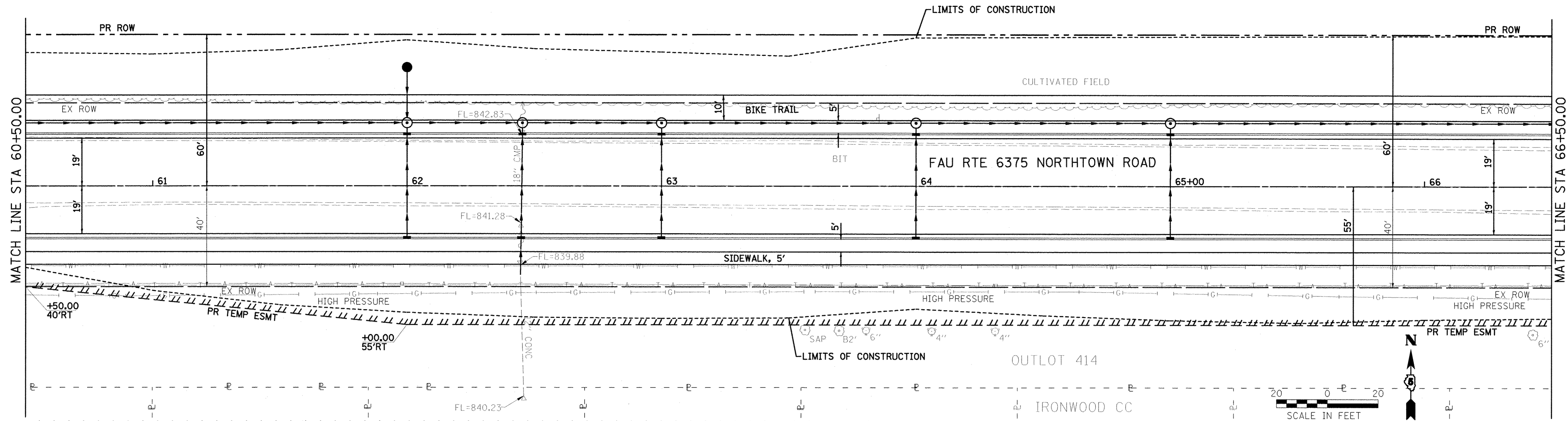


PLAN	REVISIONS	DATE
NO.	NO.	
NO.	NO.	
NO.	NO.	
NO.	NO.	
NO.	NO.	

PROFILE	REVISIONS	DATE
NO.	NO.	
NO.	NO.	
NO.	NO.	
NO.	NO.	
NO.	NO.	



Farnsworth GROUP, INC.
2709 McGraw Drive
Bloomington, Illinois 61704
309/663-8435, 309/663-1574 fax

DESIGNED - PJM
DRAWN - JJO/LAT
CHECKED - PJM
DATE - 01/18/13

REVISED -
REVISED -
REVISED -
REVISED -

**TOWN OF NORMAL
NORTHTOWN ROAD FROM
1200' WEST OF LINDEN STREET TO TOWANDA AVENUE**

PLAN AND PROFILE

SCALE: SHEET OF SHEETS STA. 60+50.00 TO STA. 66+50.00

F.A.U. RTE.	SECTION	COUNTY	TOTAL SHEETS	SHEET NO.
6375	00-00206-00-RP	McLEAN	129	25
CONTRACT NO. 91479				
ILLINOIS FED. AID PROJECT				