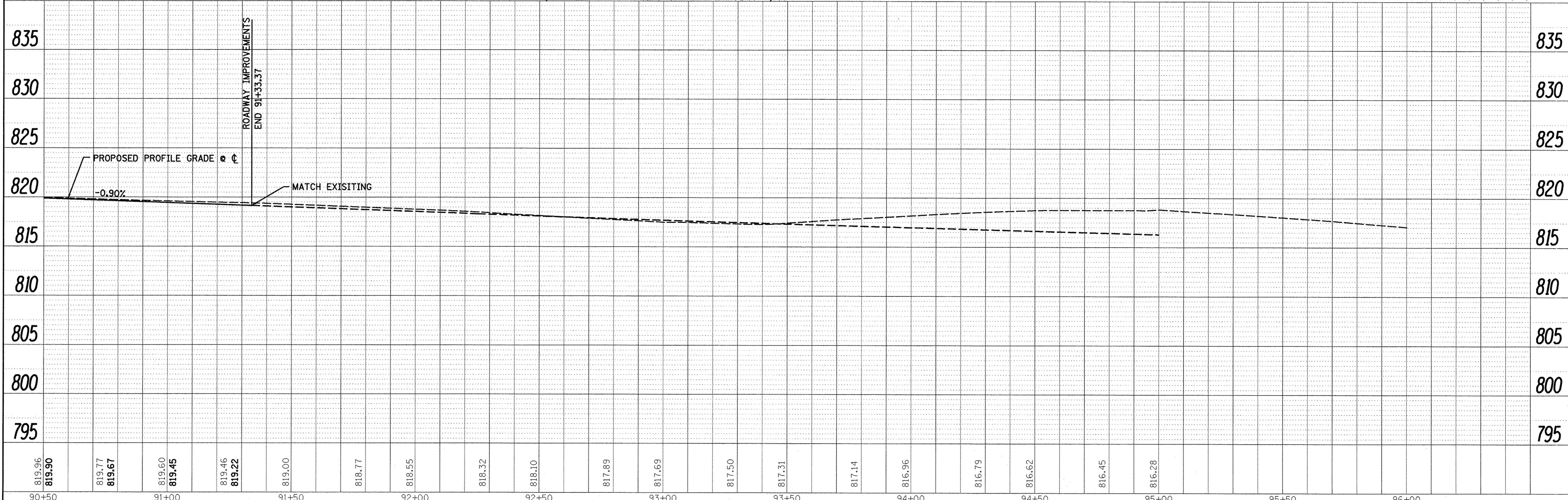
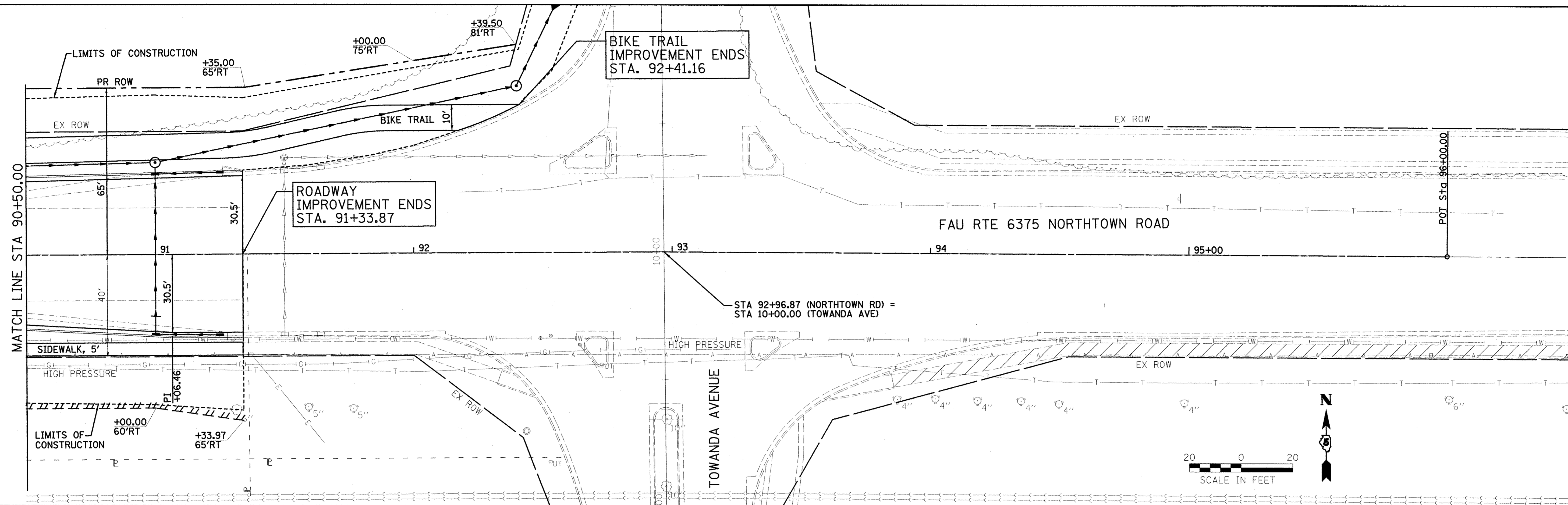


PLAN	SURVEYED	DATE
NO.	BY	
NOTE BOOK	NOTED	
NO.	BY	
STRUCTURE	NOTED	
NO.	BY	

PROFILE	SURVEYED	DATE
NO.	BY	
NOTE BOOK	NOTED	
NO.	BY	
STRUCTURE	NOTED	
NO.	BY	



 2709 McGraw Drive Bloomington, Illinois 61704 309/663-8436, 309/663-1571 fax	DESIGNED - PJM	REVISED -	TOWN OF NORMAL NORTHTOWN ROAD FROM 1200' WEST OF LINDEN STREET TO TOWANDA AVENUE	PLAN AND PROFILE SCALE: SHEET OF SHEETS STA. 90+50.00 TO STA. 96+00.00	F.A.U. RTE. 6375	SECTION 00-00206-00-RP	COUNTY McLEAN	TOTAL SHEETS 129	SHEET NO. 30
	DRAWN - JJO/LAT	REVISED -			CONTRACT NO. 91479				
	CHECKED - PJM	REVISED -			ILLINOIS FED. AID PROJECT				
	DATE - 01/18/13	REVISED -							