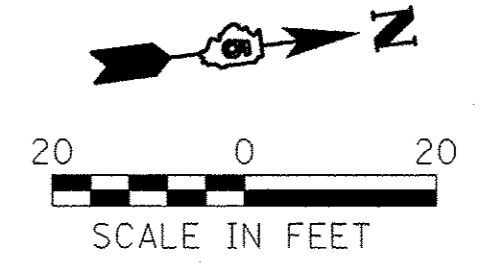
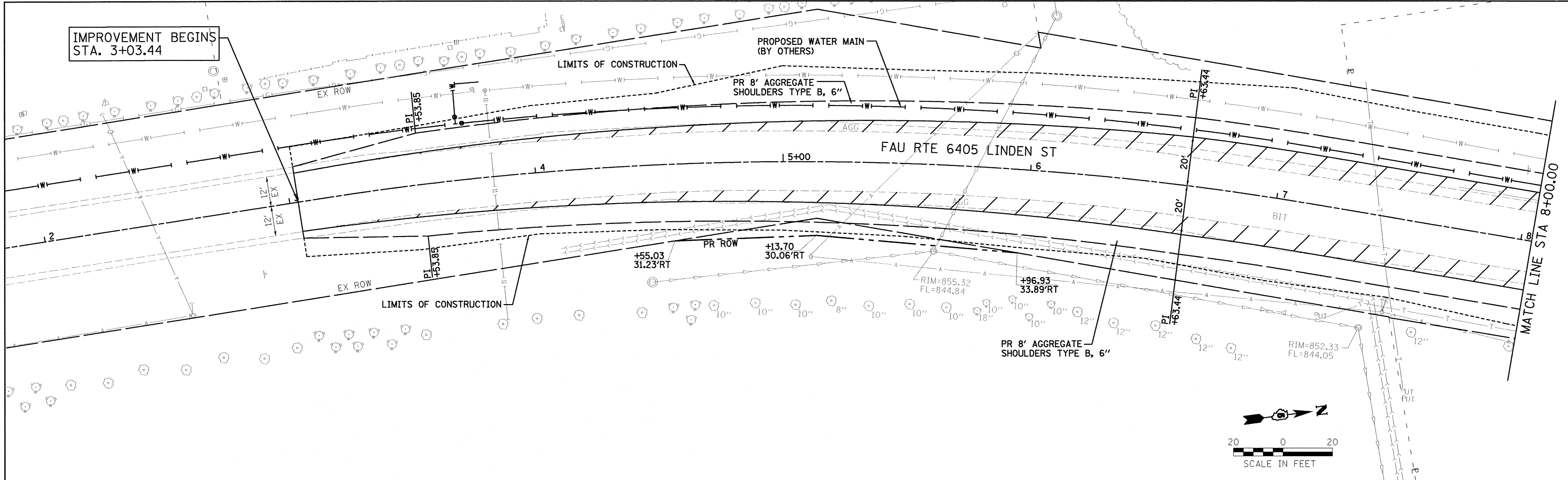
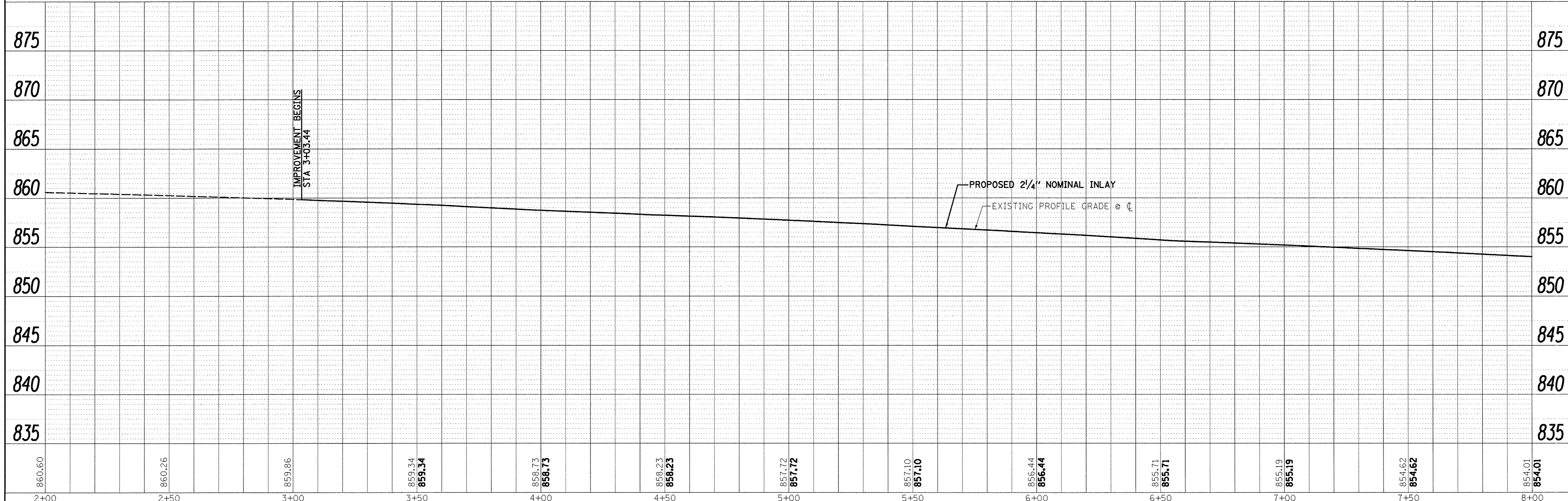


PLAN	SURVEYED	DATE
	PLOTTED	
	CHECKED	
	BY	
	NO. OF WAY CHECKED	
	FILE NAME	
	NO.	



PROFILE	SURVEYED	DATE
	PLOTTED	
	CHECKED	
	BY	
	NO. OF WAY CHECKED	
	FILE NAME	
	NO.	



 2709 McGraw Drive Bloomington, Illinois 61704 309/663-8435, 309/663-1571 fax	DESIGNED - PJM	REVISED -	TOWN OF NORMAL NORTHTOWN ROAD FROM 1200' WEST OF LINDEN STREET TO TOWANDA AVENUE	PLAN AND PROFILE SCALE: SHEET OF SHEETS STA. TO STA.		F.A.U. RTE. 6375	SECTION 00-00206-00-RP	COUNTY McLEAN	TOTAL SHEETS 129	SHEET NO. 31
	DRAWN - JJO/LAT	REVISED -				CONTRACT NO. 91479		ILLINOIS FED. AID PROJECT		
	CHECKED - PJM	REVISED -								
	DATE - 01/18/13	REVISED -								