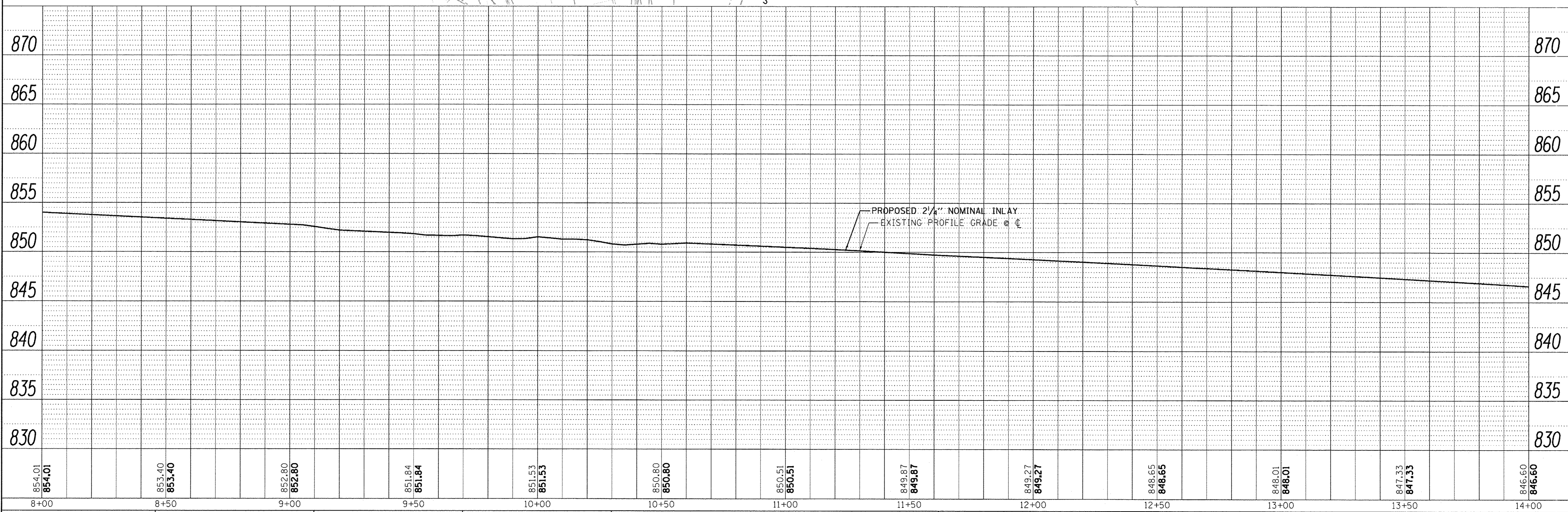
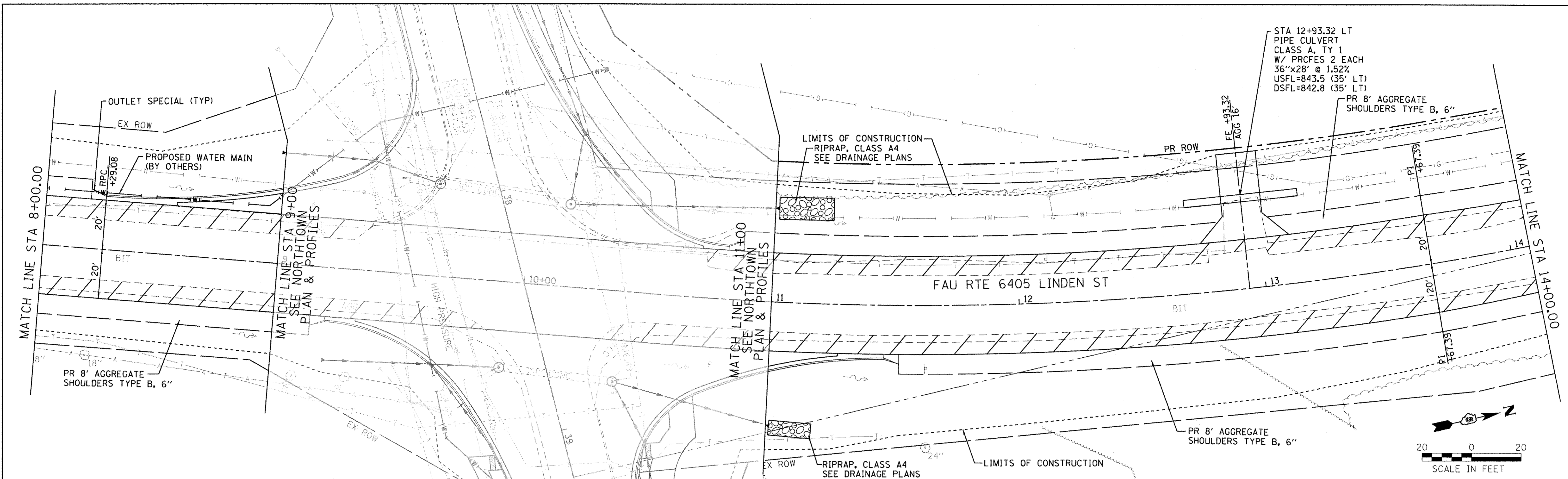


PLAN	DESIGNED	BY	DATE
	PLANNED		
	CHECKED		
	BY		
	NO. OF RAY CHECKED		
	NO.		
	NO.		
	NO.		

PROFILE	SURVEYED	BY	DATE
	PLANNED		
	CHECKED		
	BY		
	NO. OF RAY CHECKED		
	NO.		
	NO.		
	NO.		



854.01 854.01	853.40 853.40	852.80 852.80	851.84 851.84	851.53 851.53	850.80 850.80	850.51 850.51	849.87 849.87	849.27 849.27	848.65 848.65	848.01 848.01	847.33 847.33	846.60 846.60
8+00	8+50	9+00	9+50	10+00	10+50	11+00	11+50	12+00	12+50	13+00	13+50	14+00

Farnsworth
GROUP, INC.
2709 McCreaw Drive
Bloomington, Illinois 61704
309/663-8435, 309/663-1571 fax

DESIGNED - PJM
DRAWN - JJO/LAT
CHECKED - PJM
DATE - 01/18/13

REVISED -
REVISED -
REVISED -
REVISED -

TOWN OF NORMAL
NORTHTOWN ROAD FROM
1200' WEST OF LINDEN STREET TO TOWANDA AVENUE

PLAN AND PROFILE

SCALE: SHEET OF SHEETS STA. TO STA.

F.A.U. RTE. 6375	SECTION 00-00206-00-RP	COUNTY McLEAN	TOTAL SHEETS 129	SHEET NO. 32
CONTRACT NO. 91479			ILLINOIS FED. AID PROJECT	