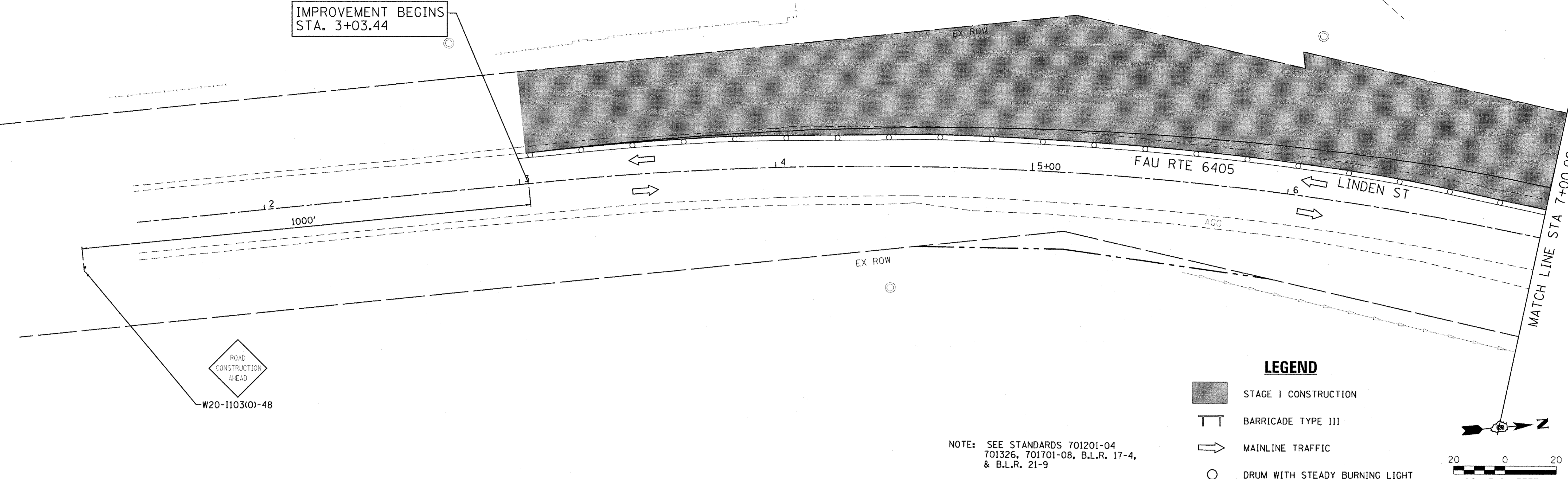


IMPROVEMENT BEGINS
STA. 3+03.44

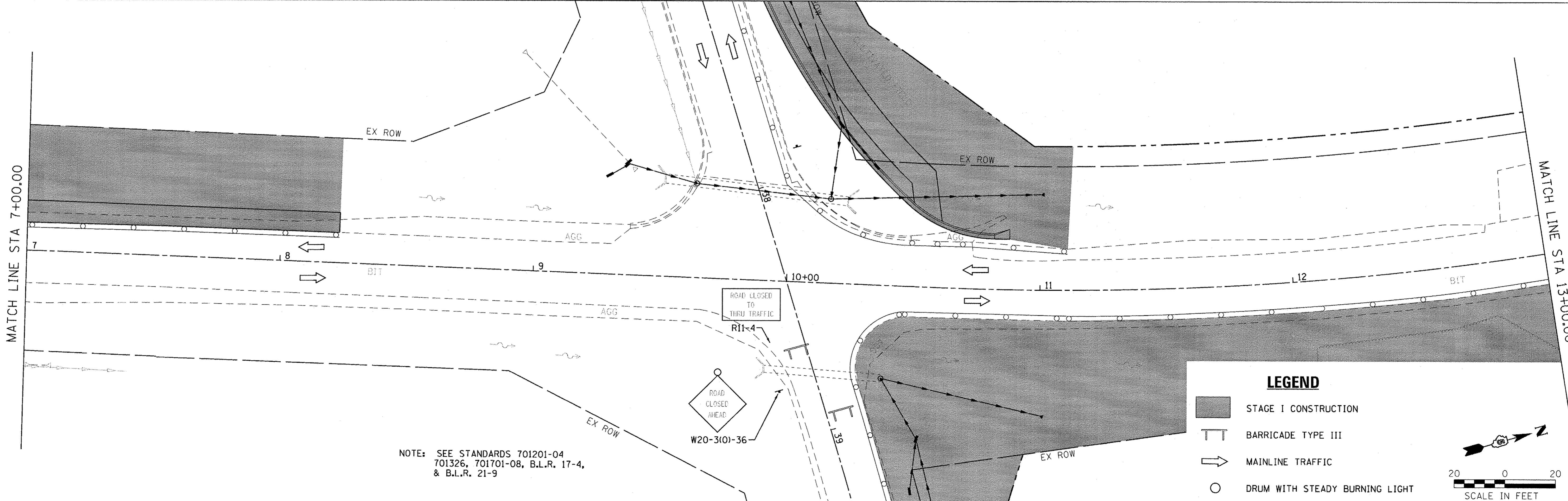


NOTE: SEE STANDARDS 701201-04
701326, 701701-08, B.L.R. 17-4,
& B.L.R. 21-9

LEGEND

- STAGE I CONSTRUCTION
- BARRICADE TYPE III
- MAINLINE TRAFFIC
- DRUM WITH STEADY BURNING LIGHT

SCALE IN FEET



NOTE: SEE STANDARDS 701201-04
701326, 701701-08, B.L.R. 17-4,
& B.L.R. 21-9

LEGEND

- STAGE I CONSTRUCTION
- BARRICADE TYPE III
- MAINLINE TRAFFIC
- DRUM WITH STEADY BURNING LIGHT

SCALE IN FEET

Farnsworth GROUP, INC.
2709 McGraw Drive
Bloomington, Illinois 61704
309/663-8435, 309/663-1571 fax

DESIGNED - PJM	REVISED -
DRAWN - JJO/LAT	REVISED -
CHECKED - PJM	REVISED -
DATE - 01/18/13	REVISED -

DESIGNED - PJM	REVISED -
DRAWN - JJO/LAT	REVISED -
CHECKED - PJM	REVISED -
DATE - 01/18/13	REVISED -

**TOWN OF NORMAL
NORTHTOWN ROAD FROM
1200' WEST OF LINDEN STREET TO TOWANDA AVENUE**

**STAGE CONSTRUCTION PLANS
STAGE I**

SCALE: SHEET OF SHEETS STA. TO STA.

F.A.U. RTE.	SECTION	COUNTY	TOTAL SHEETS	SHEET NO.
6375	00-00206-00-RP	McLEAN	129	39
CONTRACT NO. 91479				

ILLINOIS FED. AID PROJECT