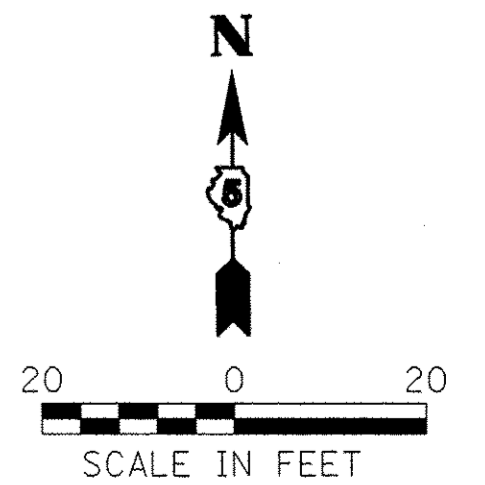
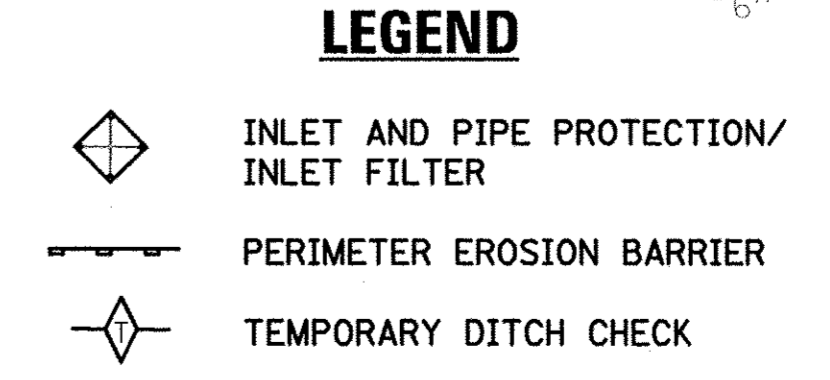
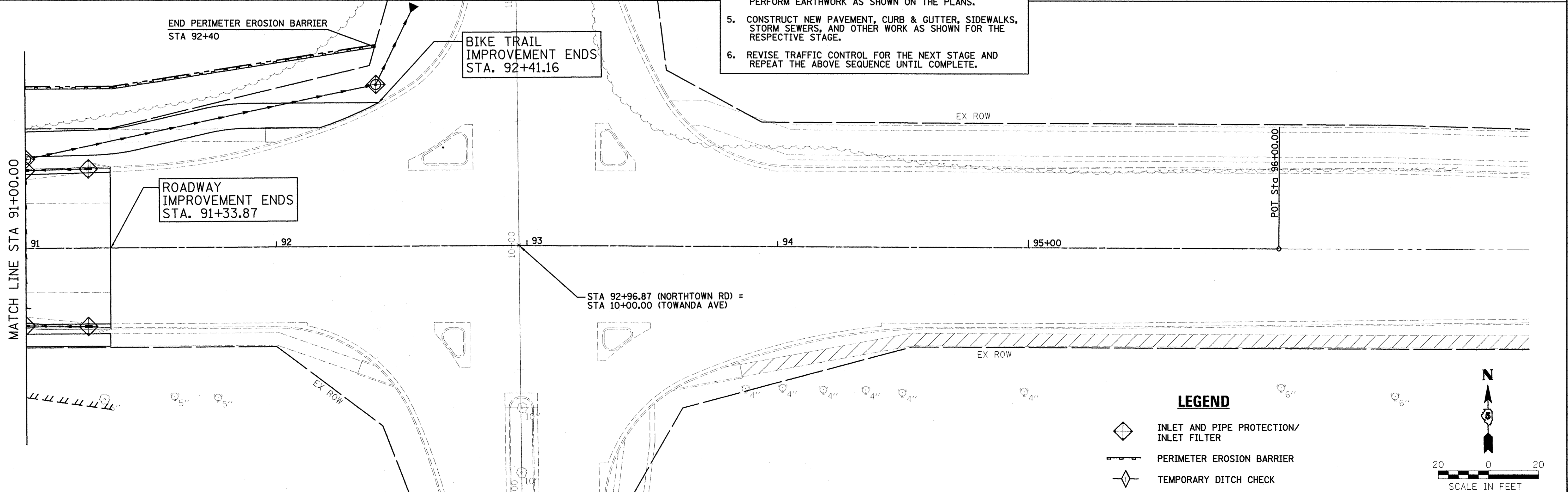
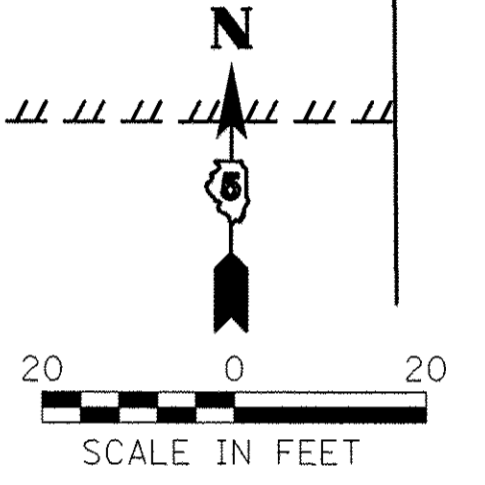
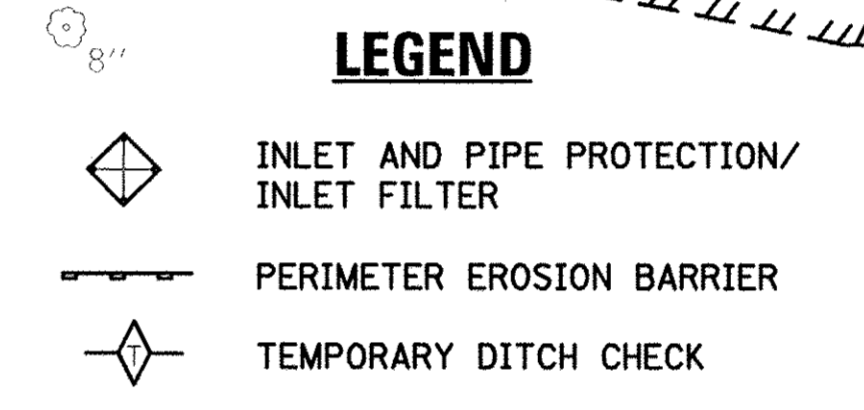


- INTENDED SEQUENCE**
1. SETUP TRAFFIC CONTROL FOR THE RESPECTIVE STAGE.
 2. PLACEMENT OF PERIMETER EROSION BARRIER PRIOR TO THE COMMENCEMENT OF ANY WORK, SEE STD. 280001.
 3. INSTALL INLET AND PIPE PROTECTION AND OTHER EROSION CONTROL ITEMS AS STATED ON THE PLANS.
 4. REMOVE EXISTING PAVEMENT, CURB & GUTTER, SIDEWALK, PERFORM EARTHWORK AS SHOWN ON THE PLANS.
 5. CONSTRUCT NEW PAVEMENT, CURB & GUTTER, SIDEWALKS, STORM SEWERS, AND OTHER WORK AS SHOWN FOR THE RESPECTIVE STAGE.
 6. REVISE TRAFFIC CONTROL FOR THE NEXT STAGE AND REPEAT THE ABOVE SEQUENCE UNTIL COMPLETE.



Farnsworth
GROUP, INC.
2709 McGraw Drive
Bloomington, Illinois 61704
309/663-8435, 309/663-1571 fax

DESIGNED - PJM
DRAWN - JJO/LAT
CHECKED - PJM
DATE - 01/18/13

REVISED -
REVISED -
REVISED -
REVISED -

**TOWN OF NORMAL
NORTHTOWN ROAD FROM
1200' WEST OF LINDEN STREET TO TOWANDA AVENUE**

EROSION CONTROL PLAN

SCALE: SHEET OF SHEETS STA. TO STA.

F.A.U. RTE.	SECTION	COUNTY	TOTAL SHEETS	SHEET NO.
6375	00-00206-00-RP	McLEAN	129	56
CONTRACT NO. 91479				
ILLINOIS FED. AID PROJECT				