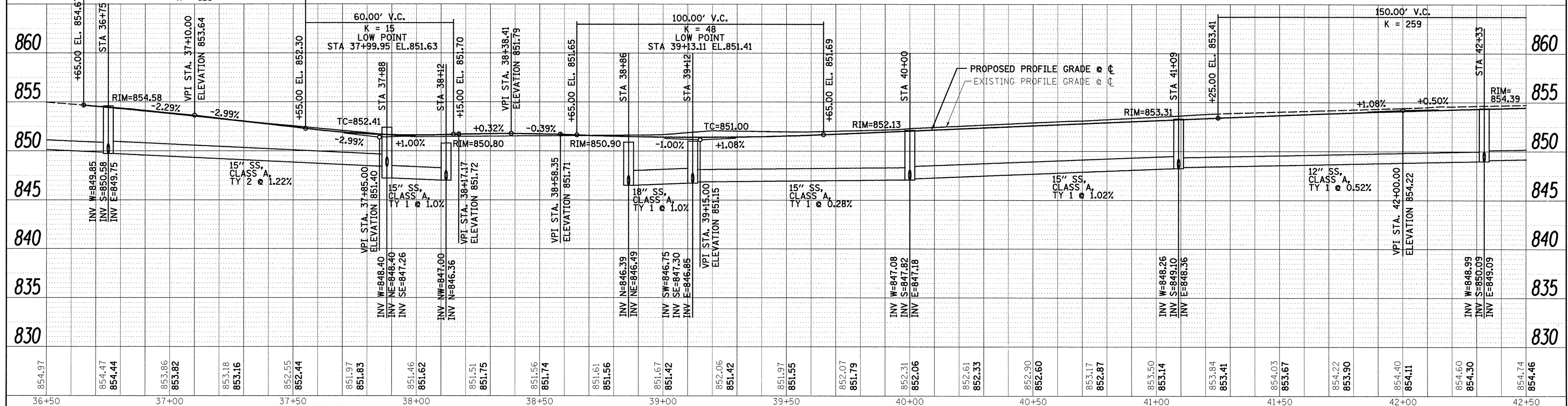
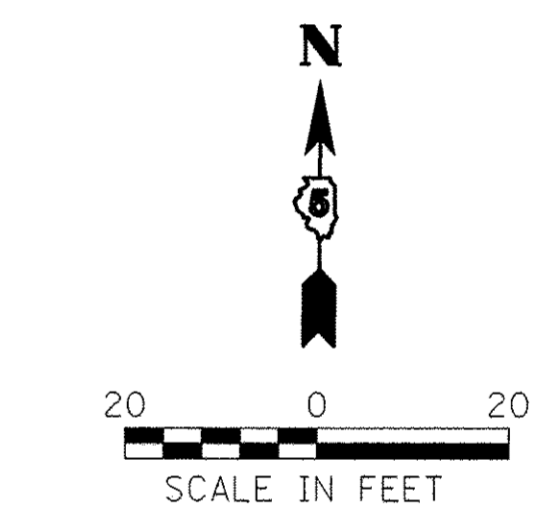
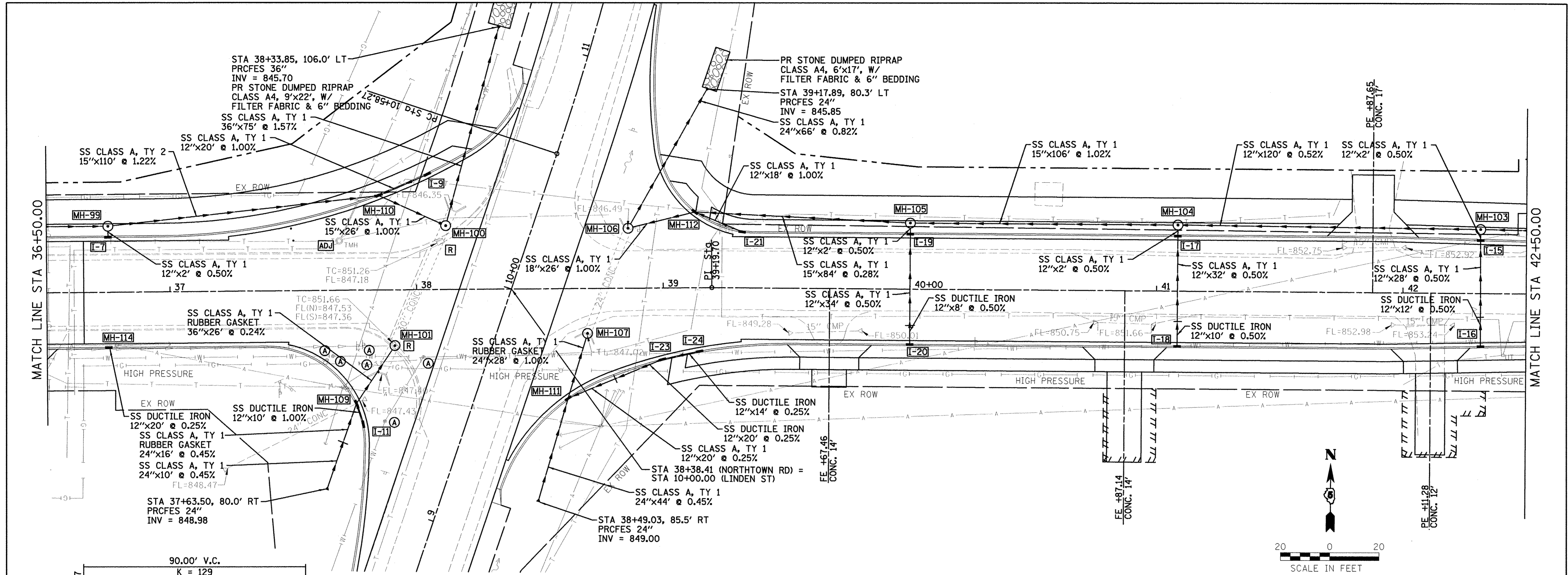


DATE	BY
DESIGNED	PJM
DRAWN	JJO/LAT
CHECKED	PJM
DATE	01/18/13

DATE	BY
DESIGNED	PJM
DRAWN	JJO/LAT
CHECKED	PJM
DATE	01/18/13



Farnsworth GROUP, INC.
2709 McGraw Drive
Bloomington, Illinois 61704
309/663-8435, 309/663-1571 fax

DESIGNED - PJM
DRAWN - JJO/LAT
CHECKED - PJM
DATE - 01/18/13

REVISED -
REVISED -
REVISED -
REVISED -

TOWN OF NORMAL
NORTHTOWN ROAD FROM
1200' WEST OF LINDEN STREET TO TOWANDA AVENUE

DRAINAGE PLAN AND PROFILE

SCALE: SHEET OF SHEETS STA. 36+50.00 TO STA. 42+50.00

F.A.U. R.F.E.	SECTION	COUNTY	TOTAL SHEETS
6375	00-00206-00-RP	McLEAN	129
CONTRACT NO. 91479			62