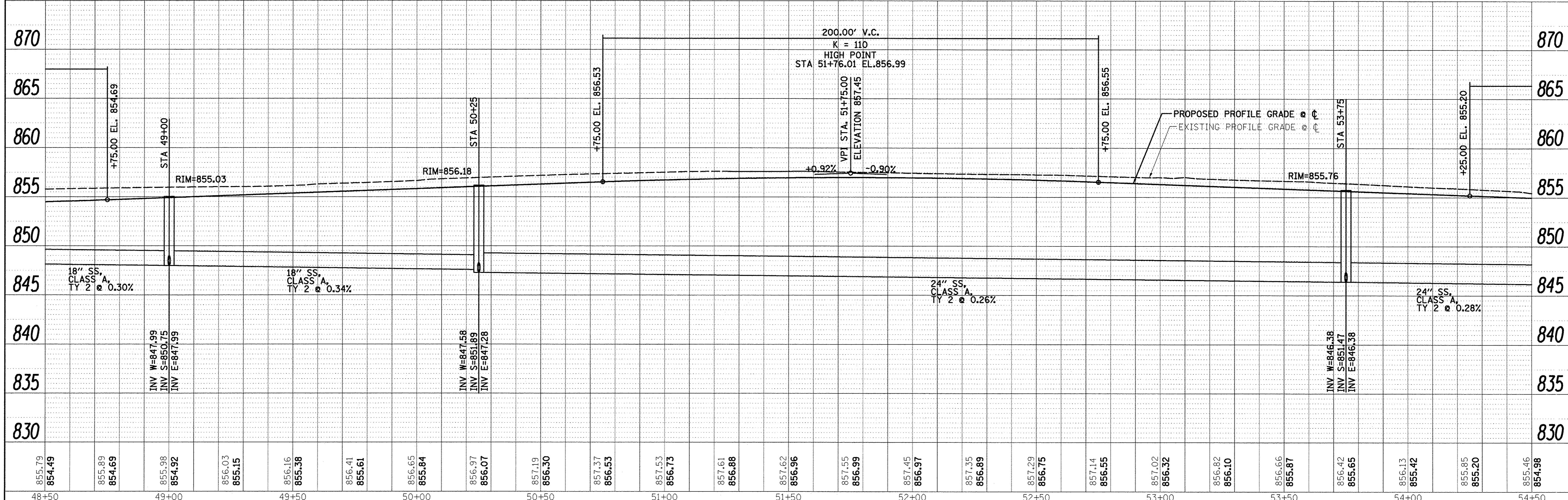
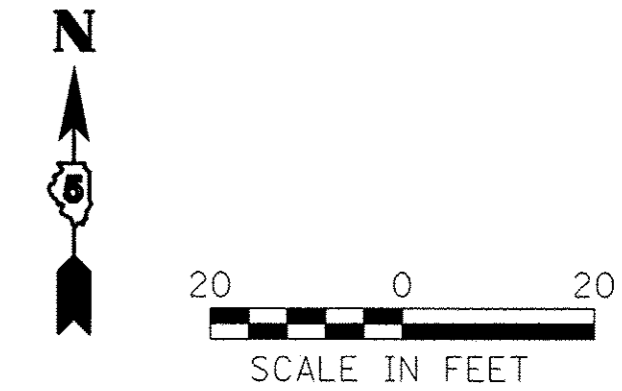
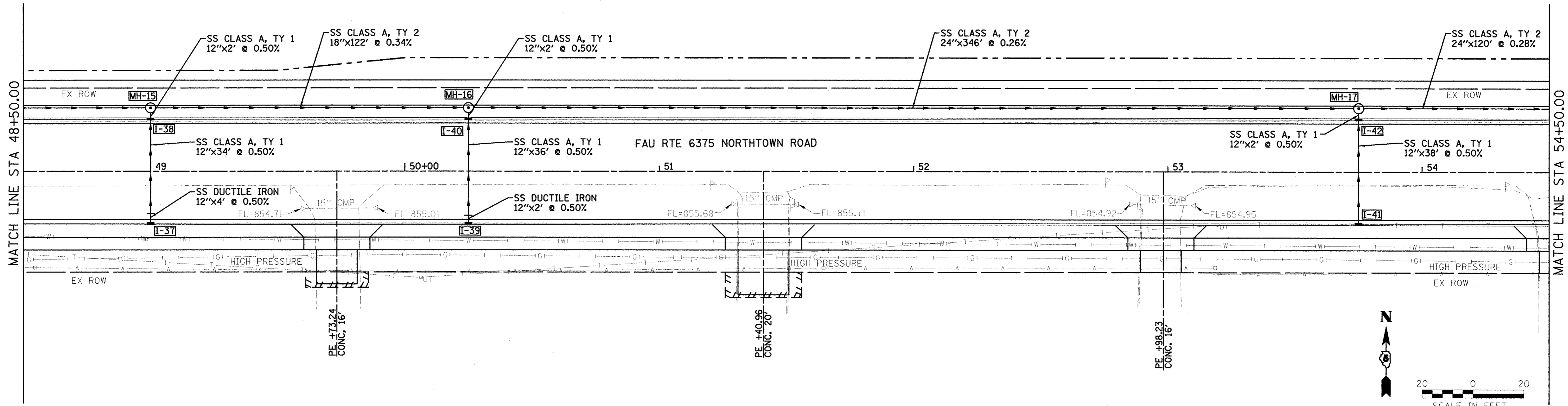


DATE	
BY	
DESIGNED	
DRAWN	
CHECKED	
DATE	
NO.	
FILE NAME	

DATE	
BY	
DESIGNED	
DRAWN	
CHECKED	
DATE	
NO.	
FILE NAME	



**Farnsworth**  
GROUP, INC.  
2709 McDraw Drive  
Bloomington, Illinois 61704  
309/663-8435, 309/663-1571 fax

DESIGNED - PJM  
DRAWN - JJO/LAT  
CHECKED - PJM  
DATE - 01/18/13

REVISED -  
REVISED -  
REVISED -  
REVISED -

**TOWN OF NORMAL**  
**NORTHTOWN ROAD FROM**  
**1200' WEST OF LINDEN STREET TO TOWANDA AVENUE**

**DRAINAGE PLAN AND PROFILE**

SCALE: SHEET OF SHEETS STA. 48+50.00 TO STA. 54+50.00

F.A.U. RTE.	SECTION	COUNTY	TOTAL SHEETS	SHEET NO.
6375	00-00206-00-RP	McLEAN	129	64
CONTRACT NO. 91479			ILLINOIS FED. AID PROJECT	