

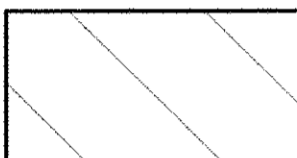
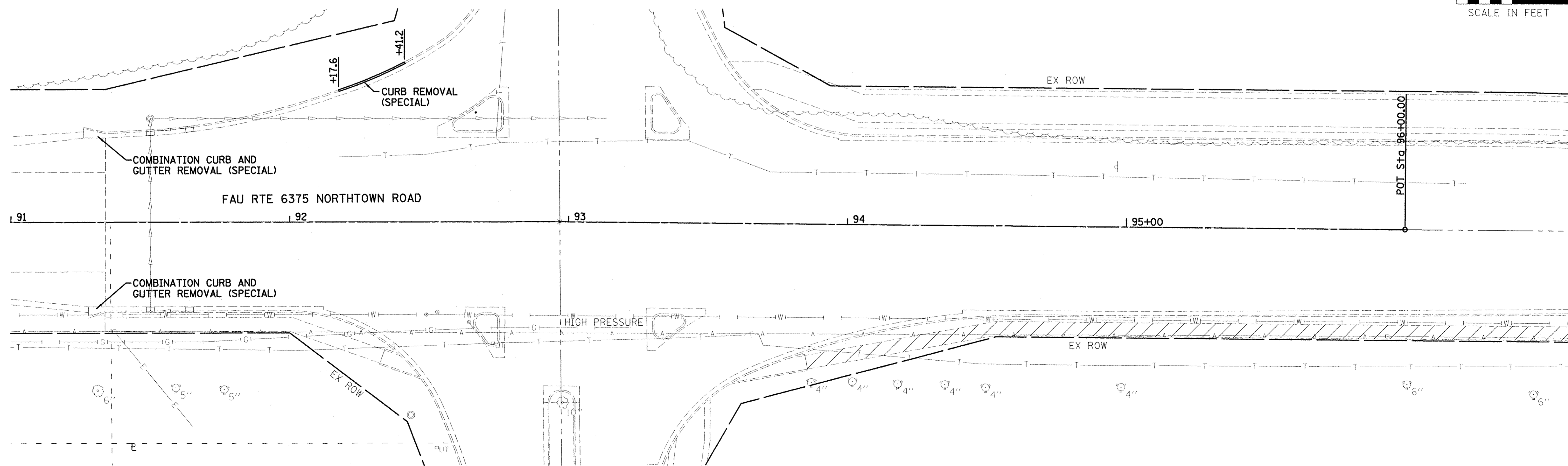
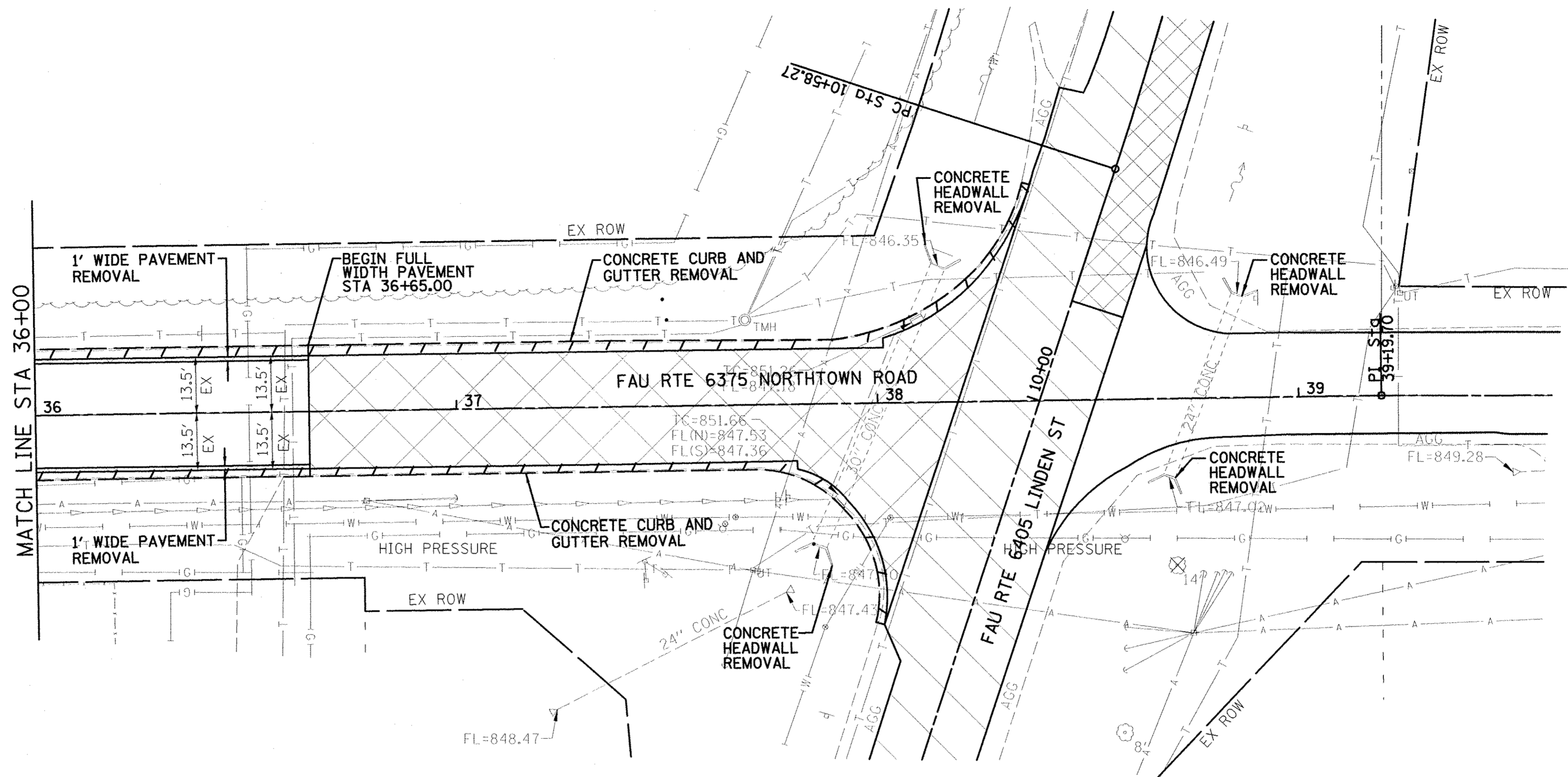


-  PAVEMENT REMOVAL
-  HMA PAVEMENT REMOVAL ON A FLEXIBLE BASE - PAID FOR AS EARTH EXCAVATION
-  HMA SURFACE REMOVAL, VARIABLE DEPTH



Farnsworth
GROUP, INC.
2709 McGraw Drive
Bloomington, Illinois 61704
309/663-8435, 309/663-1571 fax

DESIGNED - PJM
DRAWN - JJO/LAT
CHECKED - PJM
DATE - 01/18/13

REVISED -
REVISED -
REVISED -
REVISED -

**TOWN OF NORMAL
NORTHTOWN ROAD FROM
1200' WEST OF LINDEN STREET TO TOWANDA AVENUE**

REMOVAL PLAN

SCALE: SHEET OF SHEETS STA. TO STA.

F.A.U. RTE.	SECTION	COUNTY	TOTAL SHEETS	SHEET NO.
6375	00-00206-00-RP	McLEAN	129	73
CONTRACT NO. 91479				
ILLINOIS FED. AID PROJECT				