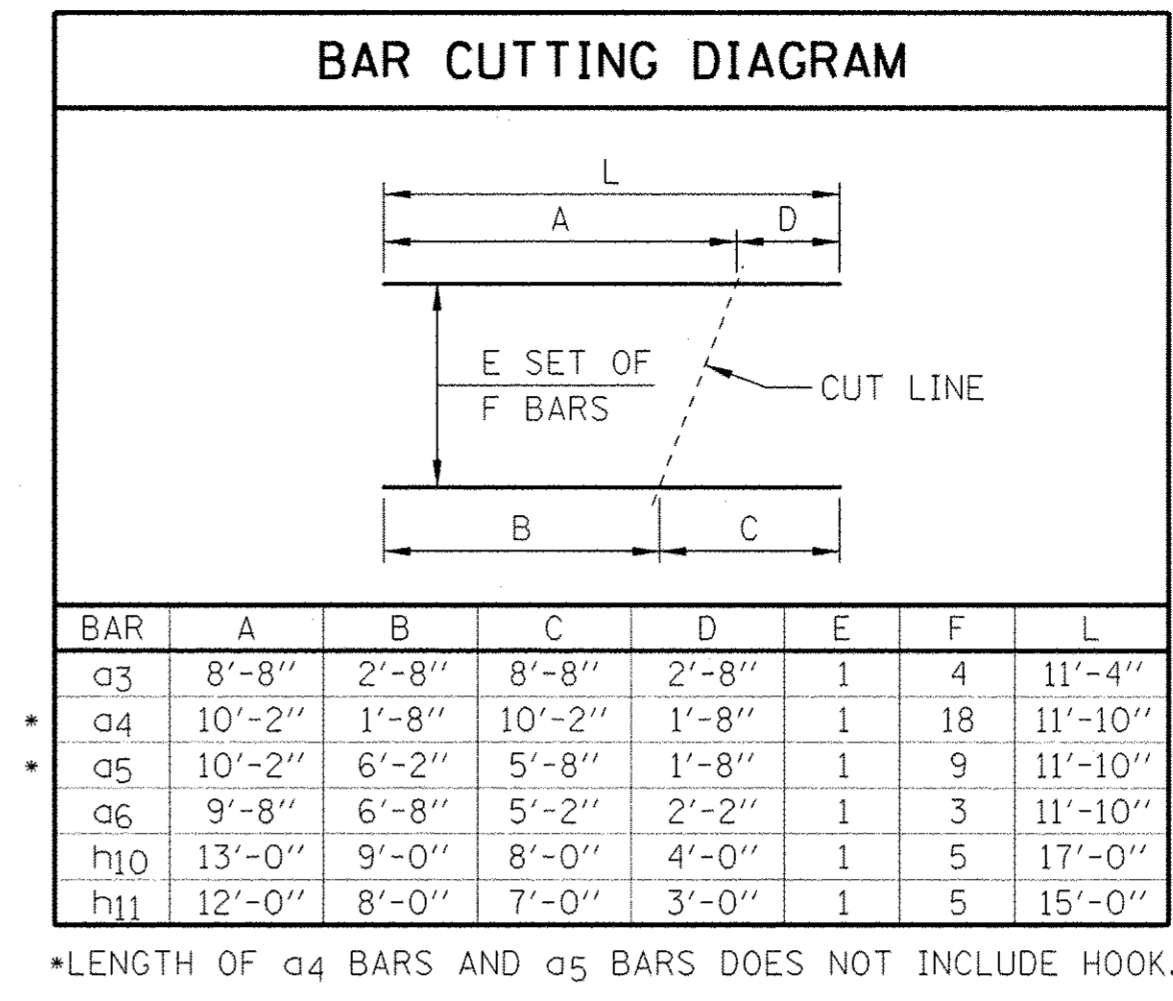


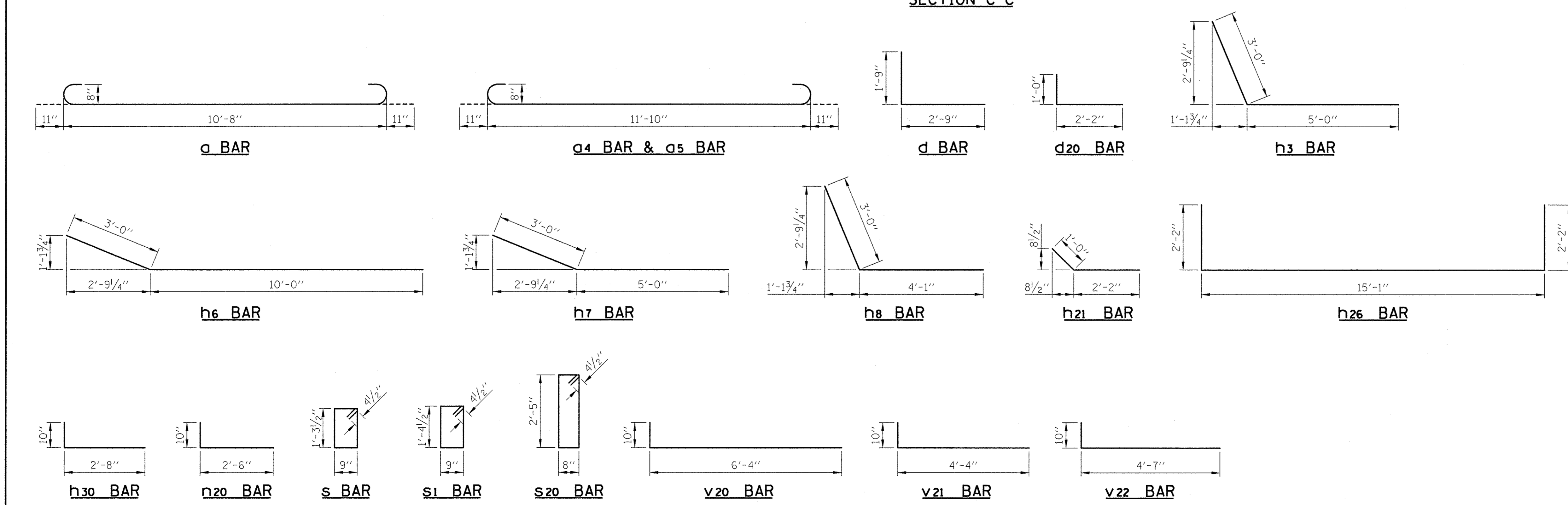
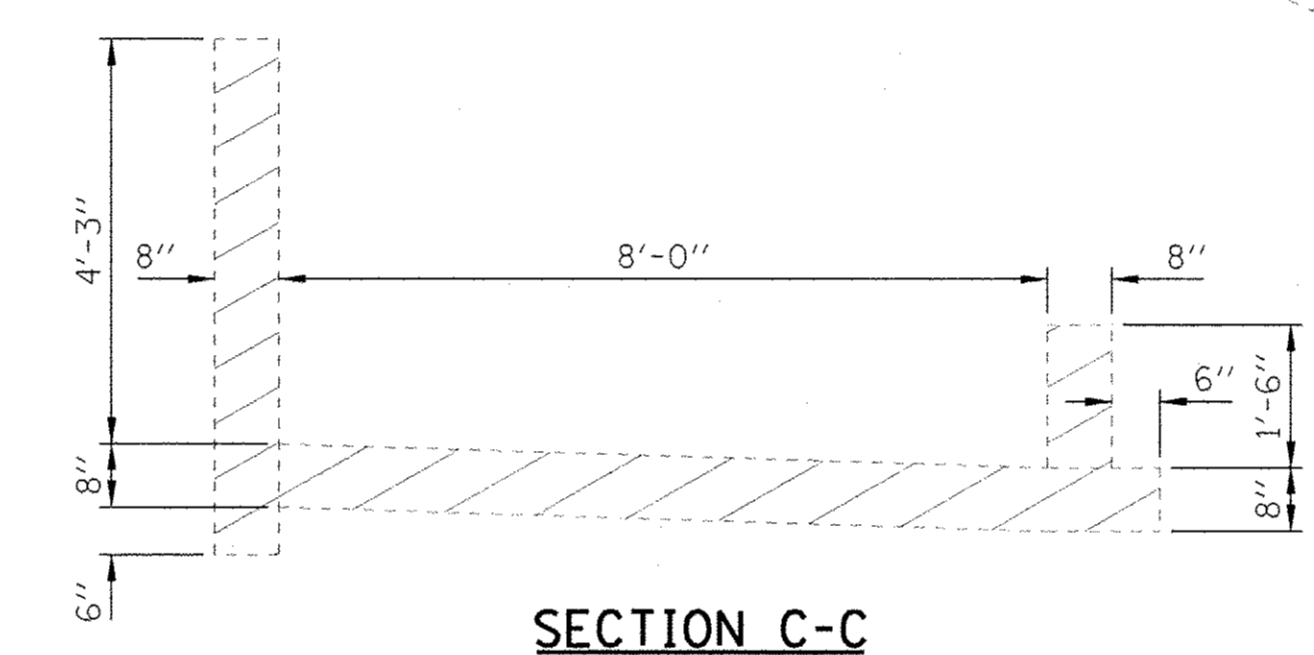
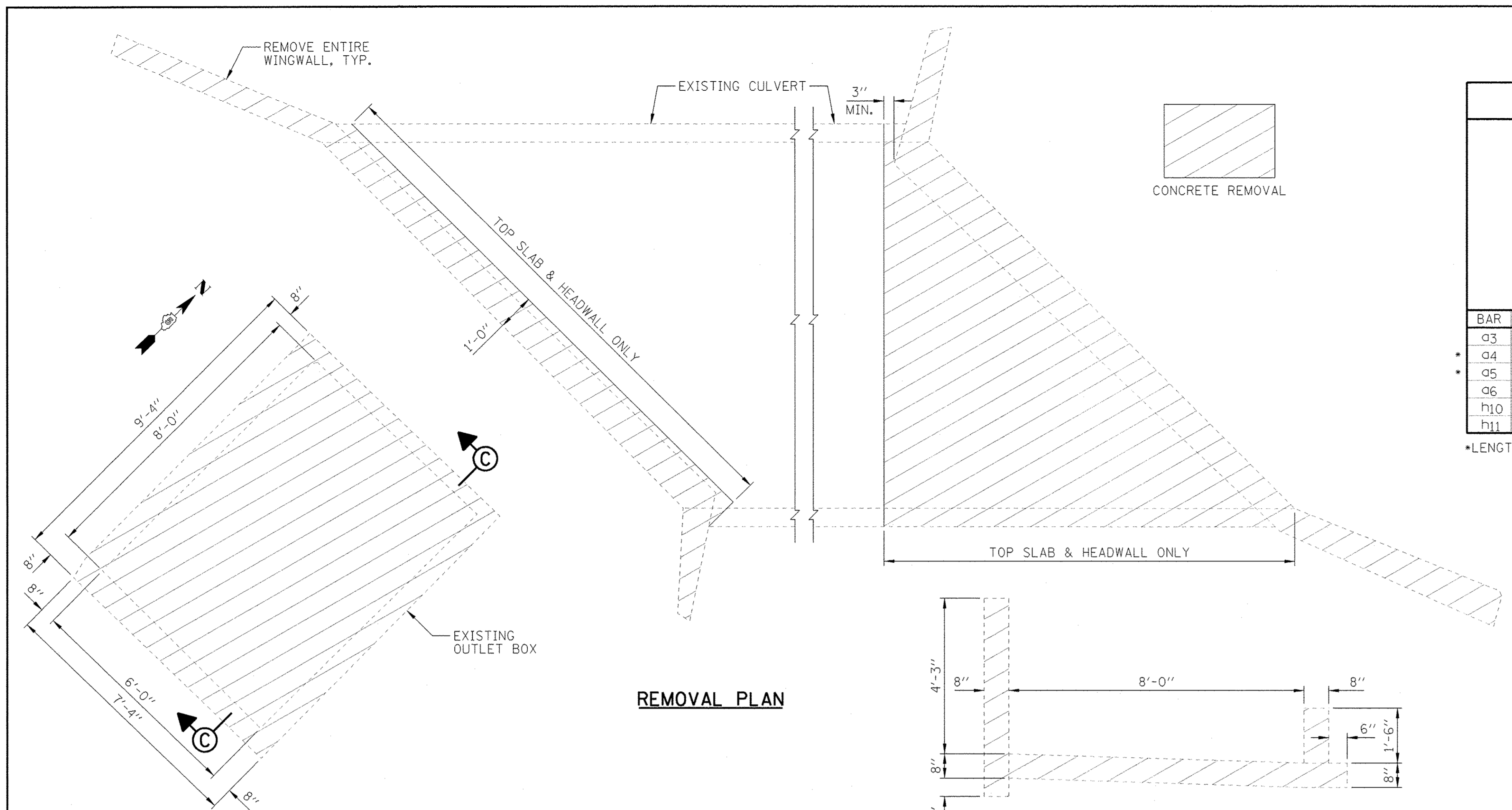
BILL OF MATERIAL

BAR	NO.	SIZE	LENGTH	SHAPE
a	113	#8	12'-6"	
a1	12	#4	10'-3"	
a2	23	#5	10'-3"	
a3	4	#4	11'-4"	
a4	18	#8	13'-8"	
a5	9	#8	13'-8"	
a6	3	#4	11'-10"	
a7	1	#5	13'-10"	
a20	42	#9	15'-1"	
a21	7	#4	15'-1"	
a22	10	#5	15'-1"	
d	11	#4	4'-6"	
d20	16	#5	3'-2"	
h	11	#6	33'-3"	
h1	18	#5	33'-3"	
h2	8	#5	33'-0"	
h3	4	#5	8'-0"	
h4	4	#6	13'-10"	
h5	6	#7	13'-10"	
h6	10	#5	13'-0"	
h7	7	#5	8'-0"	
h8	6	#5	7'-1"	
h9	11	#4	33'-11"	
h10	5	#6	17'-0"	
h11	5	#4	15'-0"	
h20	50	#5	10'-7"	
h21	38	#5	3'-2"	
h22	16	#7	7'-7"	
h23	16	#4	7'-7"	
h24	6	#5	4'-8"	
h25	4	#5	1'-0"	
h26	6	#5	19'-5"	
h27	8	#5	5'-2"	
h28	4	#5	15'-1"	
h29	3	#5	13'-9"	
h30	5	#5	3'-6"	
h31	16	#7	4'-8"	
h32	16	#4	4'-8"	
n20	14	#5	3'-4"	
s	14	#4	4'-10"	
s1	14	#4	5'-0"	
s20	16	#4	6'-11"	
v	90	#4	4'-4"	
v1	8	#4	7'-1"	
v20	10	#5	7'-2"	
v21	14	#5	5'-2"	
v22	25	#5	5'-5"	



ITEM	UNIT	QUANTITY
REMOVAL AND DISPOSAL OF UNSUITABLE MATERIAL	CU. YD.	55
POROUS GRANULAR EMBANKMENT	CU. YD.	55
STONE RIPRAP, CLASS A4	SQ. YD.	101
FILTER FABRIC	SQ. YD.	101
CONCRETE REMOVAL	CU. YD.	10.0
REINFORCEMENT BARS	POUND	12,840
EXPANSION BOLTS 3/4 INCH	EACH	16
CONCRETE BOX CULVERTS	CU. YD.	49.1
STORM SEWERS (SPECIAL), 6"	FOOT	10
STORM SEWERS, RUBBER GASKET, CLASS A, TYPE 1 36"	FOOT	5
CHAIN LINK FENCE, 5' (SPECIAL)	FOOT	35

- NOTES:**
- CUT BARS TO FIT AROUND OPENINGS.
 - SEE SHEET C1 FOR LOCATION OF THE EXISTING OUTLET BOX.



Farnsworth GROUP, INC.
 2709 McGraw Drive
 Bloomington, Illinois 61704
 309/663-8435, 309/663-1571 fax

DESIGNED - TCR	REVISIONS
CHECKED - MSW	REVISIONS
DRAWN - DJM	REVISIONS
CHECKED - MSW	REVISIONS

TOWN OF NORMAL

REMOVAL PLAN, BILL OF MATERIAL AND DETAILS

SHEET NO. C2 OF 7 SHEETS

F.A.U. RTE. 6375	SECTION 00-00206-00-RP	COUNTY MCLEAN	TOTAL SHEETS 129	SHEET NO. 86
CONTRACT NO. 91479				ILLINOIS FED. AID PROJECT