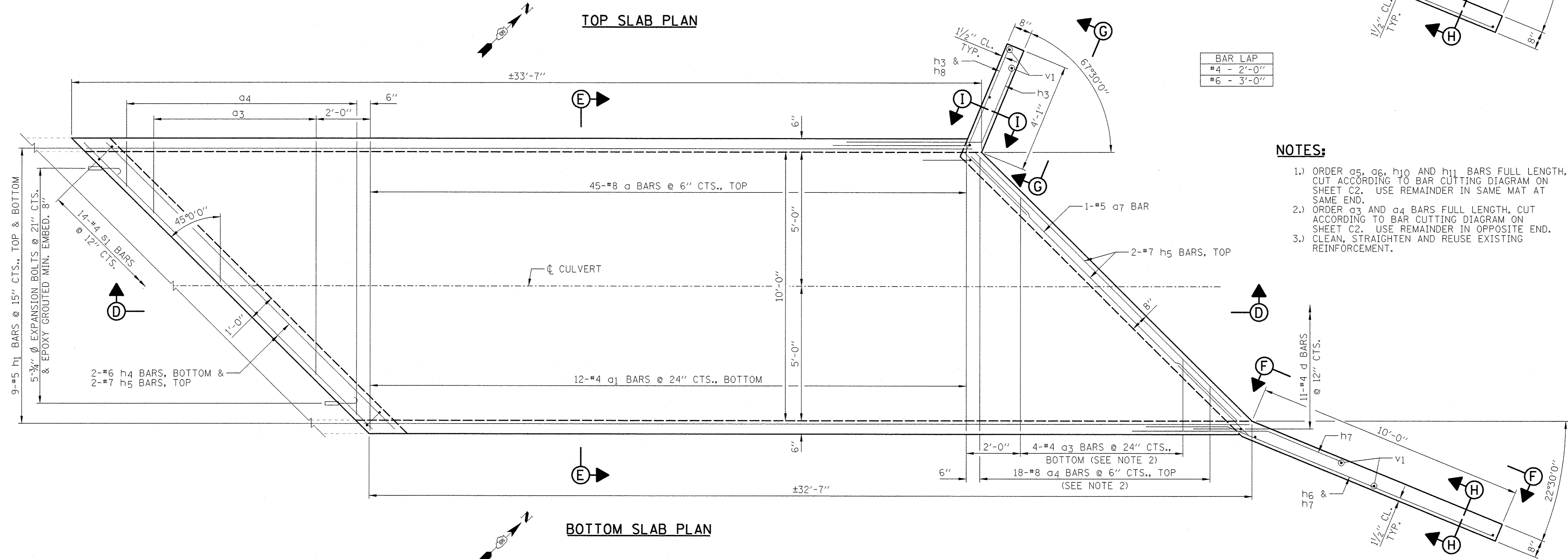


TOP SLAB PLAN



BOTTOM SLAB PLAN

- NOTES:**
- 1.) ORDER a5, a6, h10 AND h11 BARS FULL LENGTH, CUT ACCORDING TO BAR CUTTING DIAGRAM ON SHEET C2. USE REMAINDER IN SAME MAT AT SAME END.
  - 2.) ORDER a3 AND a4 BARS FULL LENGTH, CUT ACCORDING TO BAR CUTTING DIAGRAM ON SHEET C2. USE REMAINDER IN OPPOSITE END.
  - 3.) CLEAN, STRAIGHTEN AND REUSE EXISTING REINFORCEMENT.

**Farnsworth**  
GROUP, INC.  
2706 McGraw Drive  
Bloomington, Illinois 61704  
309/663-8435, 309/663-1574 fax

DESIGNED - TCR	REVISION
CHECKED - MSW	REVISION
DRAWN - DJM	REVISION
CHECKED - MSW	REVISION

DATE - 01/18/13

TOWN OF NORMAL

CULVERT EXTENSION PLANS

SHEET NO. C3 OF 7 SHEETS

F.A.U. RTE. 6375	SECTION 00-00206-00-RP	COUNTY MCLEAN	TOTAL SHEETS 129	SHEET NO. 87
<b>CONTRACT NO. 91479</b>				
ILLINOIS FED. AID PROJECT				