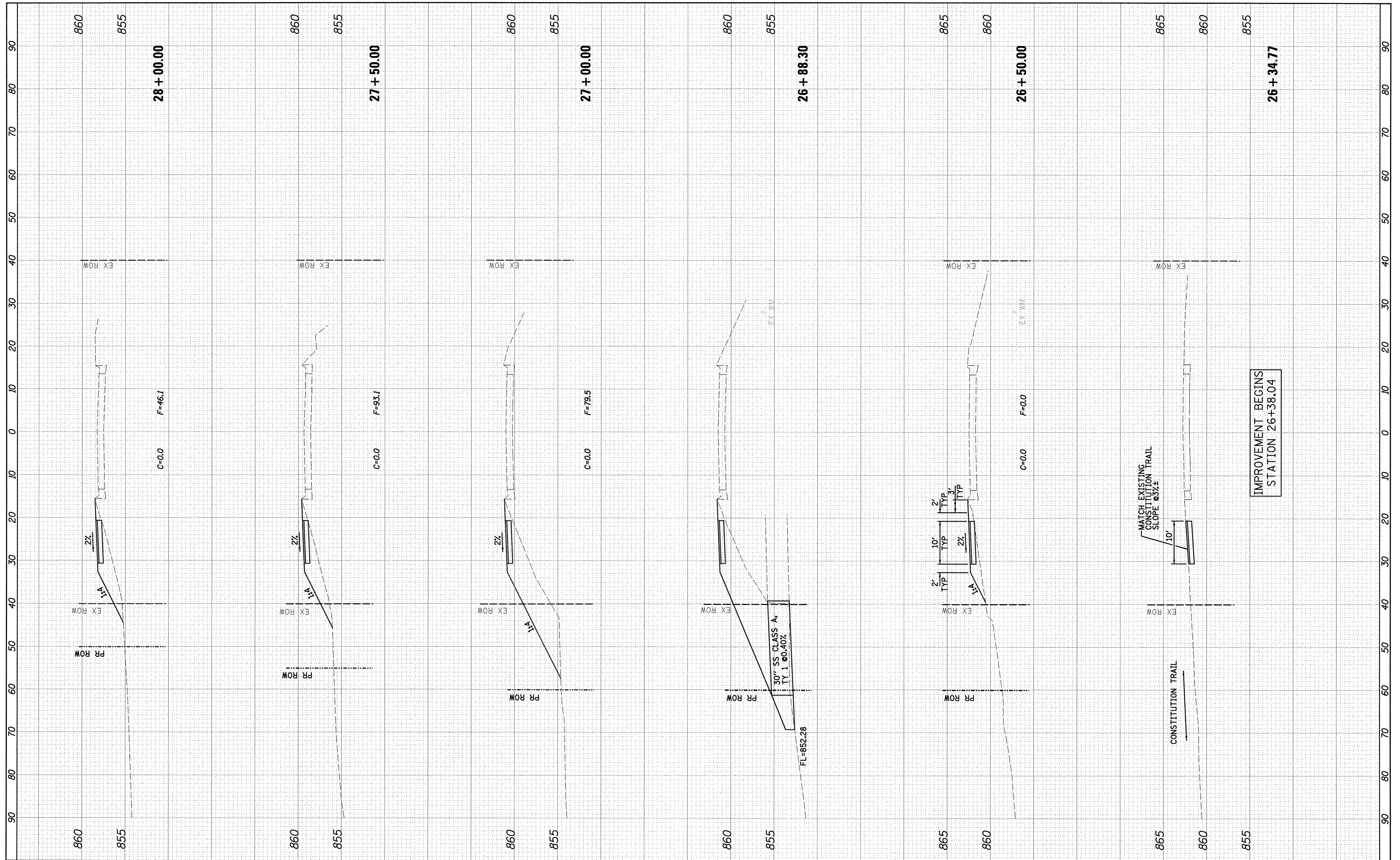


FINAL SURVEY	SUPERVISED	DATE
NOTE BOOK NO.	PLATE	BY
	AREAS CHECKED	

ORIGINAL SURVEY	SUPERVISED	DATE
NOTE BOOK NO.	PLATE	BY
	AREAS CHECKED	



IMPROVEMENT BEGINS  
STATION 26+38.04

**Farnsworth GROUP, INC.**  
2709 McGraw Drive  
Bloomington, Illinois 61704  
309/893-8435, 309/893-1571 fax

DESIGNED - PJM  
DRAWN - JJO/LAT  
CHECKED - PJM  
DATE - 01/18/13

REVISED -  
REVISED -  
REVISED -  
REVISED -

**TOWN OF NORMAL  
NORTHTOWN ROAD FROM  
1200' WEST OF LINDEN STREET TO TOWANDA AVENUE**

**NORTHTOWN ROAD  
CROSS SECTIONS**

SCALE: SHEET OF SHEETS STA. 26+34.77 TO STA. 28+00.00

F.A.U. RTE. 6375	SECTION 00-00206-00-RP	COUNTY McLEAN	TOTAL SHEETS 129	SHEET NO. 93
<b>CONTRACT NO. 91479</b>				
ILLINOIS FED. AID PROJECT				