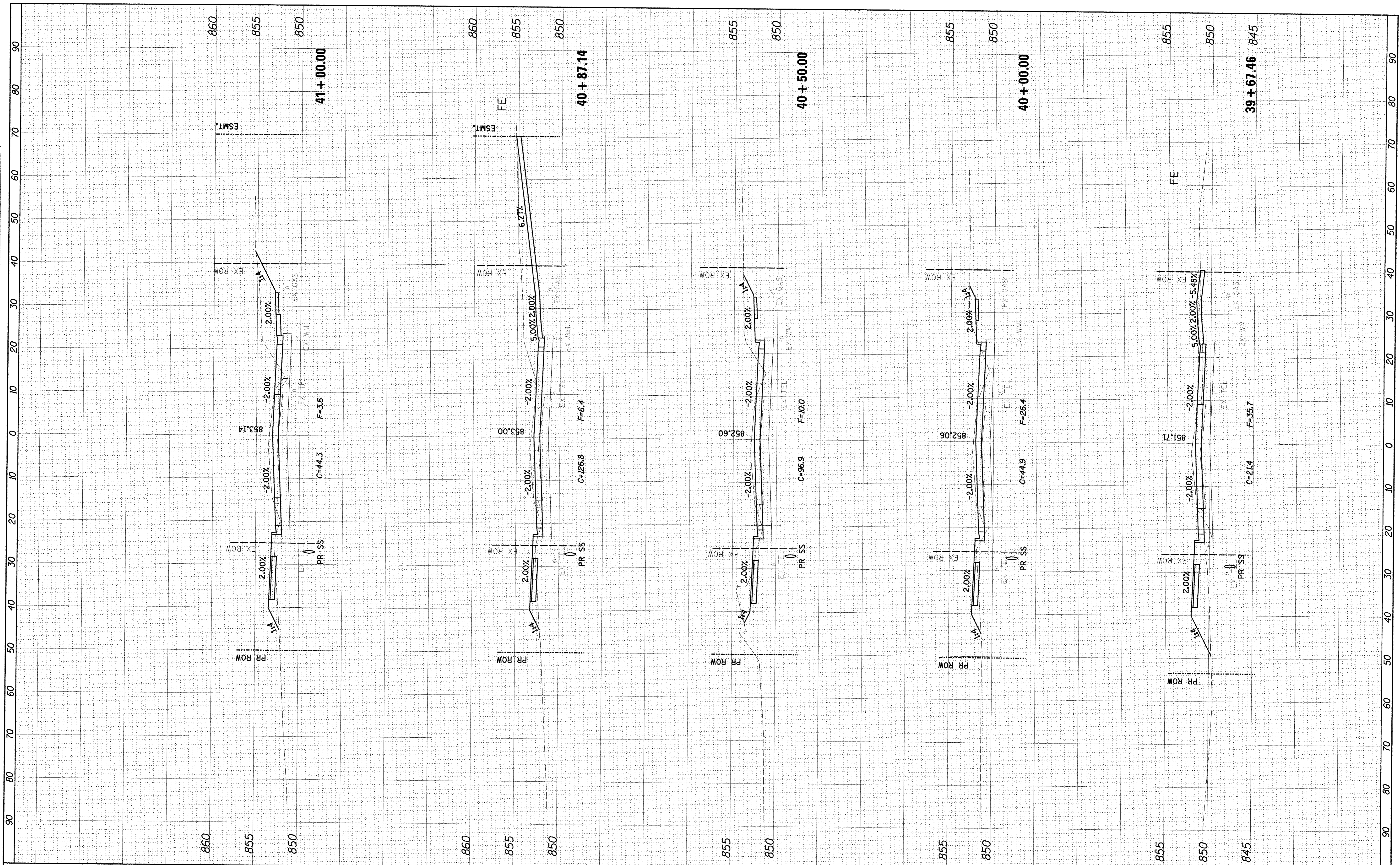


FINAL SURVEY	SURVEYED	BY	DATE
NOTE BOOK NO.	PLOTTED		
	TEMPLATE		
	AREAS CHECKED		

ORIGINAL SURVEY	SURVEYED	BY	DATE
NOTE BOOK NO.	PLOTTED		
	TEMPLATE		
	AREAS CHECKED		



Farnsworth GROUP, INC.
 2709 McGraw Drive
 Bloomington, Illinois 61704
 309/863-8435, 309/863-1571 fax

DESIGNED - PJM
 DRAWN - JJO/LAT
 CHECKED - PJM
 DATE - 01/18/13

REVISED -
 REVISED -
 REVISED -
 REVISED -

**TOWN OF NORMAL
 NORTHTOWN ROAD FROM
 1200' WEST OF LINDEN STREET TO TOWANDA AVENUE**

**NORTHTOWN ROAD
 CROSS SECTIONS**

SCALE: SHEET OF SHEETS STA. 39+67.46 TO STA. 41+00.00

F.A.U. RTE. 6375	SECTION 00-00206-00-RP	COUNTY McLEAN	TOTAL SHEETS 129	SHEET NO. 99
				CONTRACT NO. 91479

ILLINOIS FED. AID PROJECT