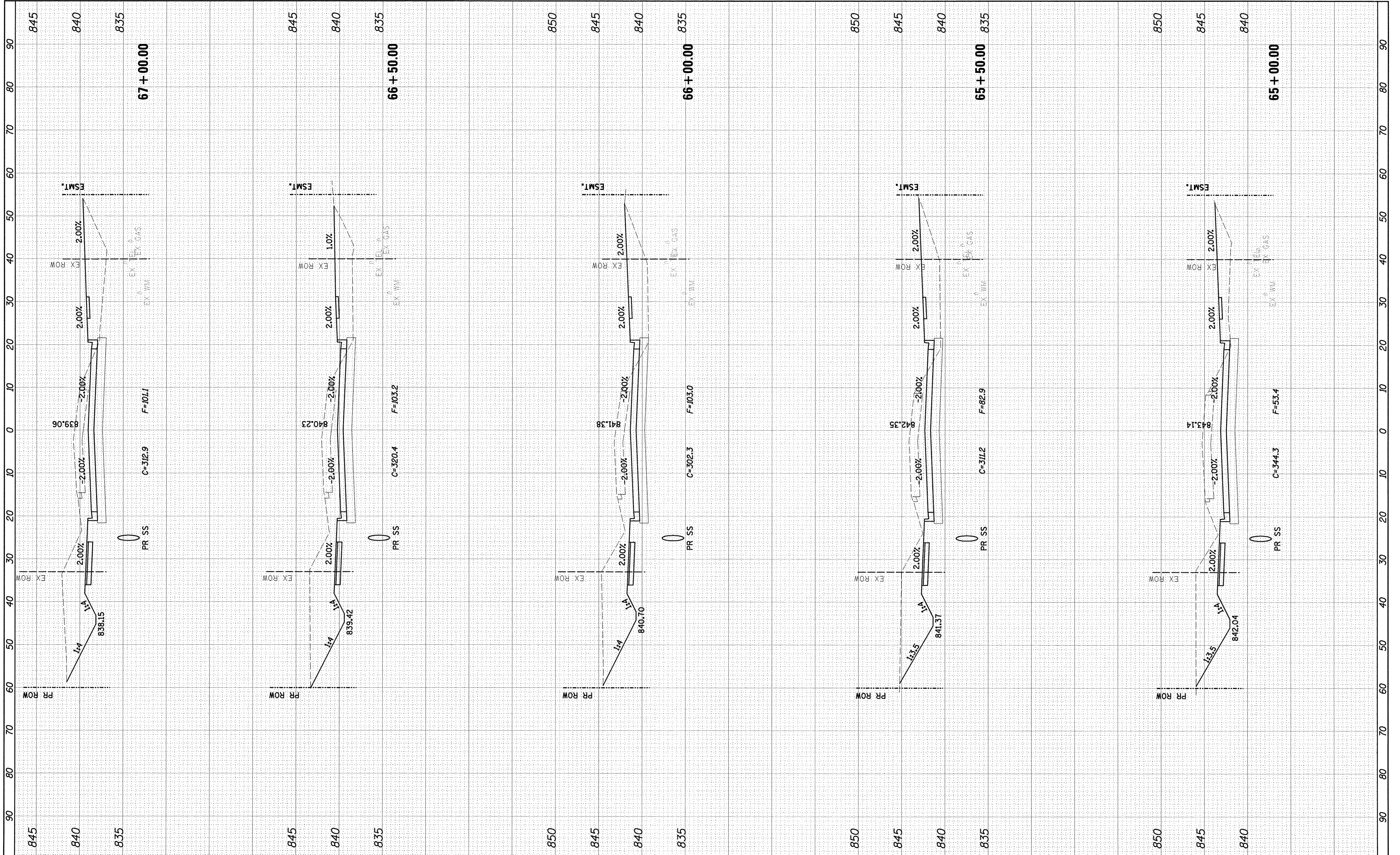


FINAL SURVEY	SURVEYED	BY	DATE
NOTE BOOK	PLOTTED		
NO.	TEMPLATE		
	AREAS		
	CHECKED		

ORIGINAL SURVEY	SURVEYED	BY	DATE
NOTE BOOK	PLOTTED		
NO.	TEMPLATE		
	AREAS		
	CHECKED		



**Farnsworth GROUP, INC.**  
 2709 McGraw Drive  
 Bloomington, Illinois 61704  
 309/983-8435, 309/983-1571 fax

DESIGNED - PJM  
 DRAWN - JJO/LAT  
 CHECKED - PJM  
 DATE - 01/18/13

REVISED -  
 REVISED -  
 REVISED -  
 REVISED -

**TOWN OF NORMAL  
 NORTHTOWN ROAD FROM  
 1200' WEST OF LINDEN STREET TO TOWANDA AVENUE**

**NORTHTOWN ROAD  
 CROSS SECTIONS**

SCALE: SHEET OF SHEETS STA. 65+00.00 TO STA. 67+00.00

F.A.U. RTE.	SECTION	COUNTY	TOTAL SHEETS	SHEET NO.
6375	00-00206-00-RP	McLEAN	129	112
CONTRACT NO. 91479				
ILLINOIS FED. AID PROJECT				