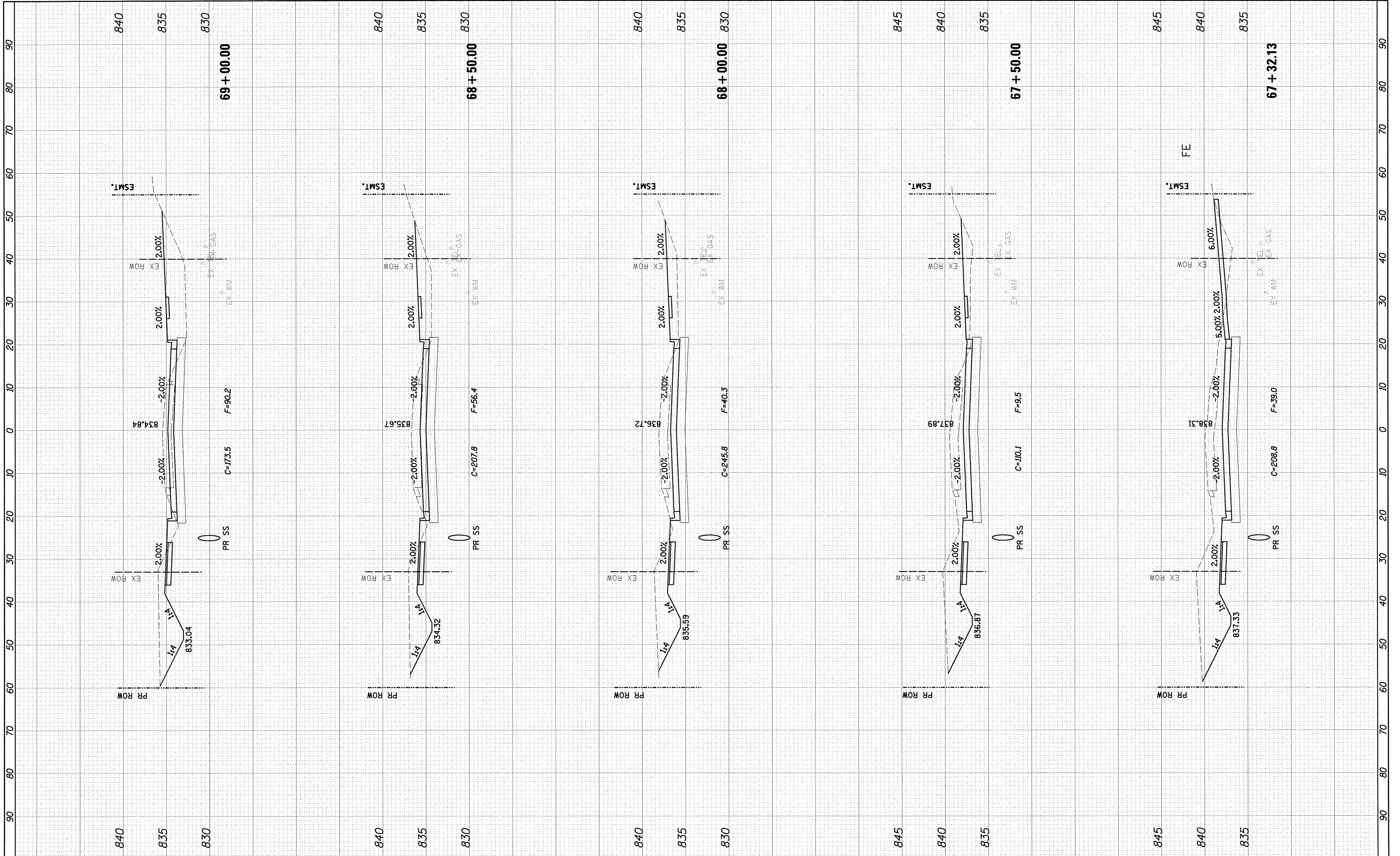


FINAL SURVEY	SURVEYED	BY	DATE
NOTE BOOK	PLOTTED		
NO.	TEMPLATE		
	AREAS		
	CHECKED		

ORIGINAL SURVEY	SURVEYED	BY	DATE
NOTE BOOK	PLOTTED		
NO.	TEMPLATE		
	AREAS		
	CHECKED		



Farnsworth GROUP, INC.
2709 McGraw Drive
Bloomington, Illinois 61704
309/663-8435, 309/663-1571 fax

DESIGNED - PJM
DRAWN - JJO/LAT
CHECKED - PJM
DATE - 01/18/13

REVISED -
REVISED -
REVISED -
REVISED -

**TOWN OF NORMAL
NORTHTOWN ROAD FROM
1200' WEST OF LINDEN STREET TO TOWANDA AVENUE**

**NORTHTOWN ROAD
CROSS SECTIONS**

SCALE: SHEET OF SHEETS STA. 67+32.13 TO STA. 69+00.00

F.A.U. RTE.	SECTION	COUNTY	TOTAL SHEETS	SHEET NO.
6375	00-00206-00-RP	MCLEAN	129	113
CONTRACT NO. 91479			ILLINOIS FED. AID PROJECT	