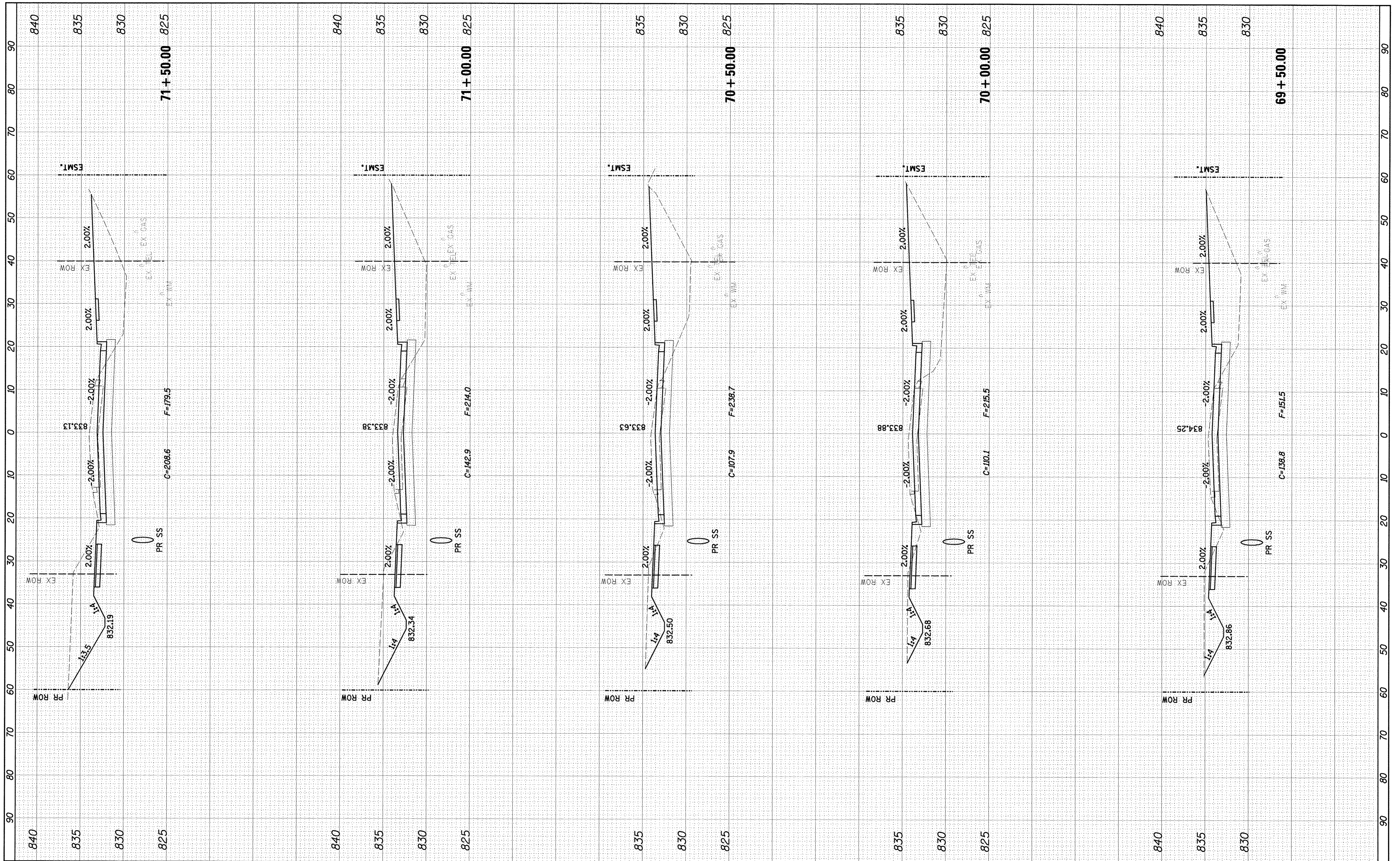


FINAL SURVEY	SURVEYED	BY	DATE
NOTE BOOK	PLOTTED		
AREAS	TEMPLATE		
CHECKED	AREAS		

ORIGINAL SURVEY	SURVEYED	BY	DATE
NOTE BOOK	PLOTTED		
AREAS	TEMPLATE		
CHECKED	AREAS		



Farnsworth GROUP, INC.
 2709 McGraw Drive
 Bloomington, Illinois 61704
 309/663-8430, 309/663-1571 fax

DESIGNED - PJM
 DRAWN - JJO/LAT
 CHECKED - PJM
 DATE - 01/18/13

REVISED -
 REVISED -
 REVISED -
 REVISED -

**TOWN OF NORMAL
 NORTHTOWN ROAD FROM
 1200' WEST OF LINDEN STREET TO TOWANDA AVENUE**

**NORTHTOWN ROAD
 CROSS SECTIONS**

SCALE: SHEET OF SHEETS STA. 69+50.00 TO STA. 71+50.00

F.A.U. RTE.	SECTION	COUNTY	TOTAL SHEETS	SHEET NO.
6375	00-00206-00-RP	McLEAN	129	114
CONTRACT NO. 91479				
ILLINOIS FED. AID PROJECT				