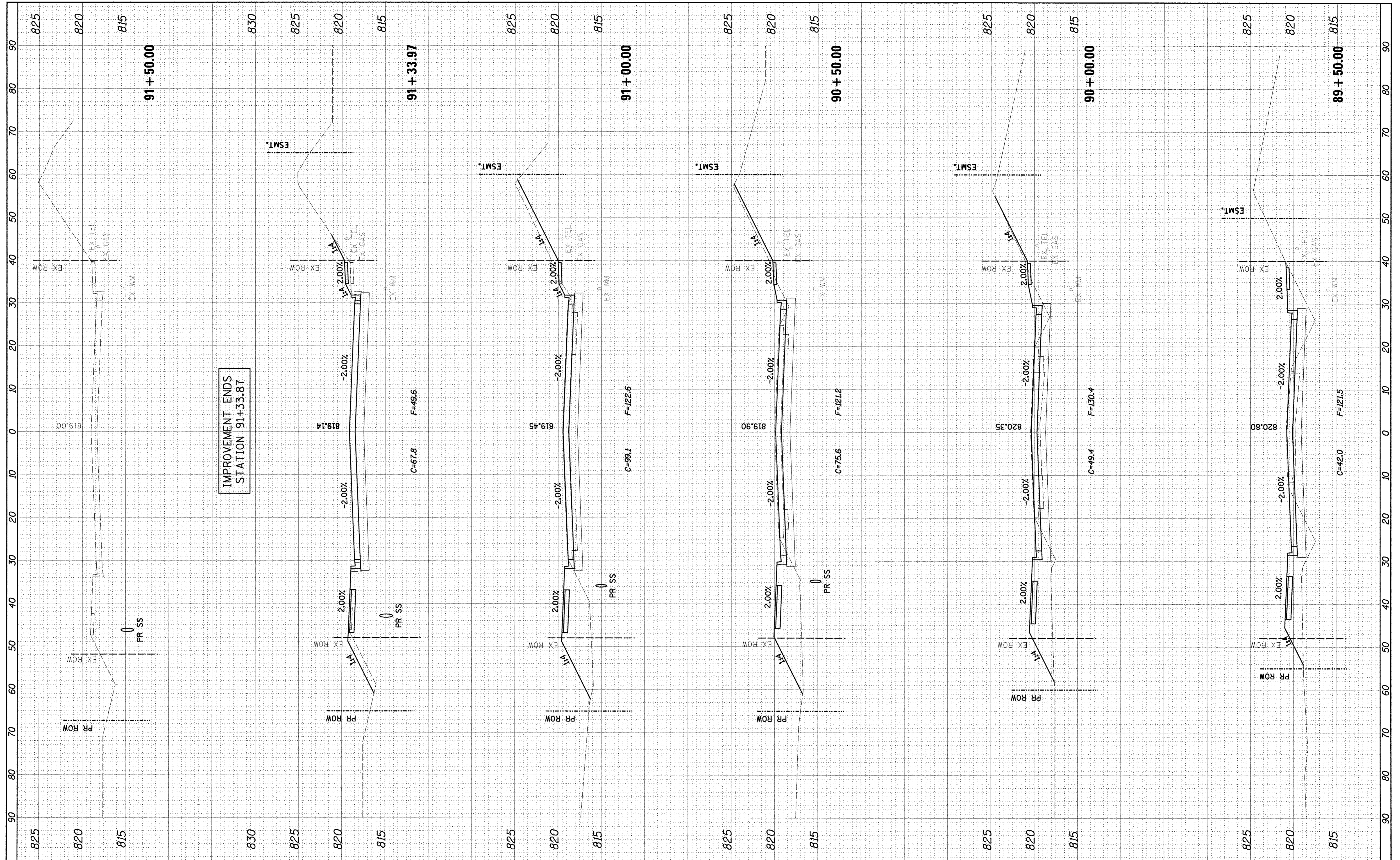


FINAL SURVEY	BY	DATE
SURVEYED		
NOTE BOOK		
NO.		
AREAS CHECKED		

ORIGINAL SURVEY	BY	DATE
SURVEYED		
NOTE BOOK		
NO.		
AREAS CHECKED		



**Farnsworth GROUP, INC.**  
 2706 McGraw Drive  
 Bloomington, Illinois 61704  
 309/663-8435, 309/663-1571 fax

DESIGNED - PJM  
 DRAWN - JJO/LAT  
 CHECKED - PJM  
 DATE - 01/18/13

REVISED -  
 REVISED -  
 REVISED -  
 REVISED -

**TOWN OF NORMAL  
 NORTHTOWN ROAD FROM  
 1200' WEST OF LINDEN STREET TO TOWANDA AVENUE**

**NORTHTOWN ROAD  
 CROSS SECTIONS**

SCALE: SHEET OF SHEETS STA. 89+50.00 TO STA. 91+33.97

F.A.U. RTE. 6375	SECTION 00-00206-00-RP	COUNTY McLEAN	TOTAL SHEETS 129	SHEET NO. 123
CONTRACT NO. 91479				
ILLINOIS FED. AID PROJECT				