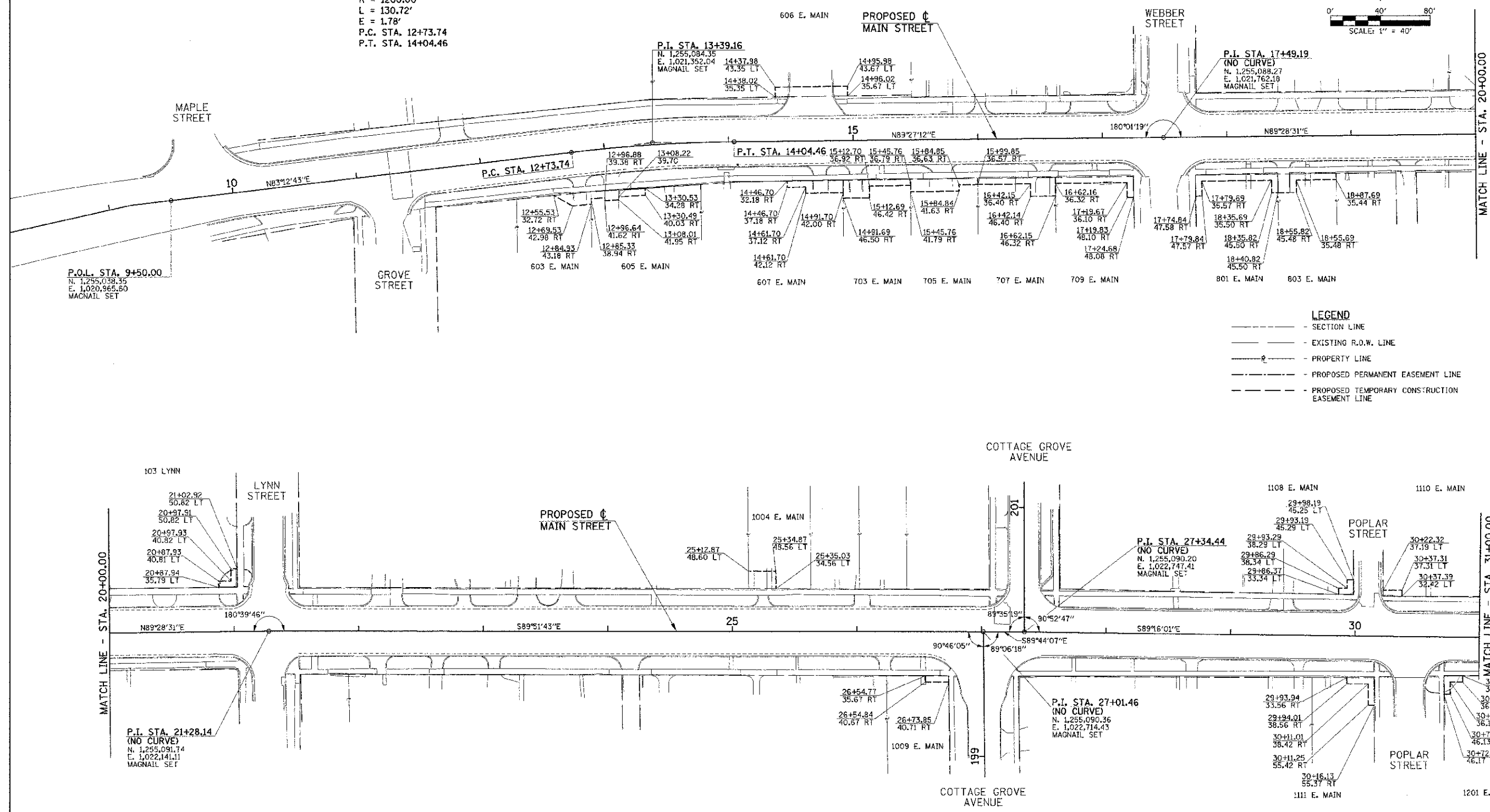
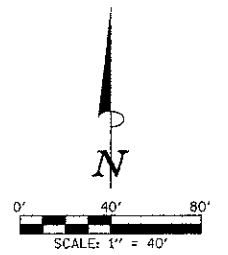


PROPOSED ϕ
 MAIN STREET
 CURVE DATA
 P.I. STA. 13+39.16
 $\Delta = 6^{\circ}14'29''$
 $D = 4^{\circ}46'29''$
 $T = 65.43'$
 $R = 1200.00'$
 $L = 130.72'$
 $E = 1.78'$
 P.C. STA. 12+73.74
 P.T. STA. 14+04.46



LEGEND
 - - - - - SECTION LINE
 - - - - - EXISTING R.O.W. LINE
 - - - - - PROPERTY LINE
 - - - - - PROPOSED PERMANENT EASEMENT LINE
 - - - - - PROPOSED TEMPORARY CONSTRUCTION EASEMENT LINE

NOTE:
 COORDINATES ARE BASED ON CITY OF URBANA
 HORIZONTAL CONTROL POINT MONUMENTS AND
 PUBLISHED COORDINATE VALUES. STATIONS
 USED FOR BASIS OF COORDINATES SYSTEM
 INCLUDE NUMBERS 40, 42, 29 AND 45.

| | | | | | | | | | | |
|--|-------------------|-----------|---|--|----------------|---------------------|----------|------------------|--------------|-----------|
| FILE NAME = p:\U0070062_Urbana - Main Street (TEP)Plans\sheet\07-horiz-control.dgn PLOT DATE = 3/8/2013 11:44:10 PM | DESIGNED - J.A.J. | REVISED - | STATE OF ILLINOIS DEPARTMENT OF TRANSPORTATION | HORIZONTAL ALIGNMENT LAYOUT AND CONTROL | | F.A.U. RTE. | SECTION | COUNTY | TOTAL SHEETS | SHEET NO. |
| | DRAWN - D.L.M. | REVISED - | | 7124 | 09-00483-01-RS | CHAMPAIGN | 75 | 13 | | |
| | CHECKED - S.M.W. | REVISED - | | MAIN STREET | | CONTRACT NO. 91480 | | | | |
| | DATE - 03/2013 | REVISED - | | SCALE: 1"=40' SHEET NO. 13 OF 75 SHEETS STA. 10+00.00 TO STA. 31+00.00 | | FED. ROAD DIST. NO. | ILLINOIS | FED. AID PROJECT | | |