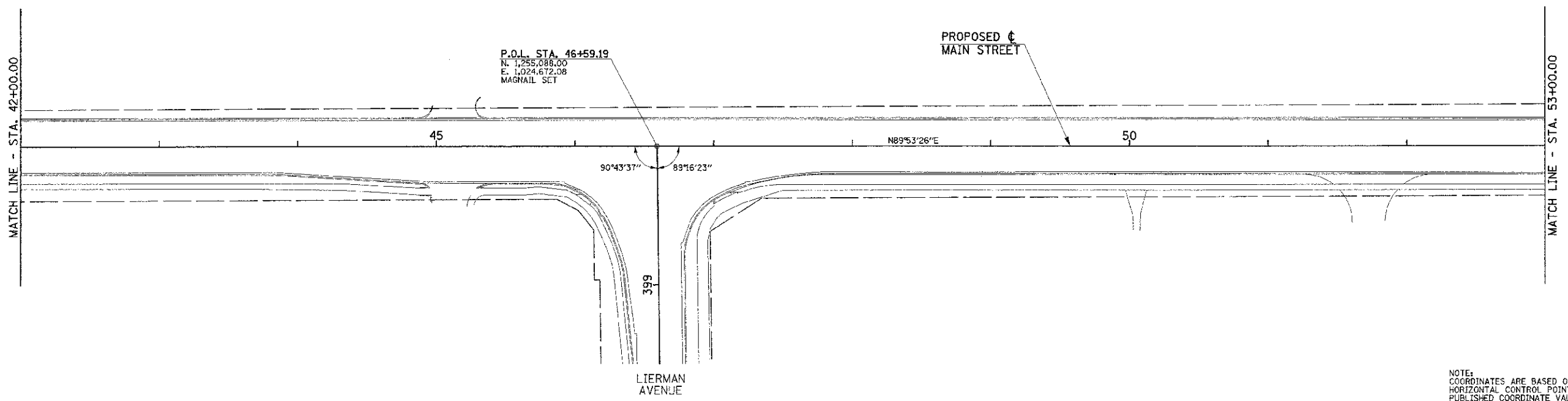


- LEGEND**
- SECTION LINE
 - - - - - EXISTING R.O.W. LINE
 - PROPERTY LINE
 - PROPOSED PERMANENT EASEMENT LINE
 - PROPOSED TEMPORARY CONSTRUCTION EASEMENT LINE



NOTE:
 COORDINATES ARE BASED ON CITY OF URBANA
 HORIZONTAL CONTROL POINT MONUMENTS AND
 PUBLISHED COORDINATE VALUES. STATIONS
 USED FOR BASIS OF COORDINATES SYSTEM
 INCLUDE NUMBERS 40, 42, 29 AND 45.

| | | | | | | | | | | |
|--|-------------------|-----------|---|---|---------------------------|--------------------------------|---------|---------------------------|-----------------|--------------|
| FILE NAME = p:\02070062_Urbana - Main Street ITEP\Plans\sheets\07_horiz_control.dgn | DESIGNED - J.A.J. | REVISED - | STATE OF ILLINOIS DEPARTMENT OF TRANSPORTATION | HORIZONTAL ALIGNMENT LAYOUT AND CONTROL | | F.A.I.J. RTE. | SECTION | COUNTY | TOTAL SHEETS | SHEET NO. |
| | DRAWN - D.L.M. | REVISED - | | SCALE ± 1"=40' | SHEET NO. 14 OF 75 SHEETS | STA. 31+00.00 TO STA. 53+00.00 | 7124 | 09-00483-01-RS | CHAMPAIGN | 75 |
| PLOT DATE = 3/8/2013 11:44:19 PM | CHECKED - S.M.W. | REVISED - | | | | MAIN STREET | | CONTRACT NO. 91480 | | |
| | DATE - 03/2013 | REVISED - | | | | FED. ROAD DIST. NO. | | ILLINOIS FED. AID PROJECT | | |