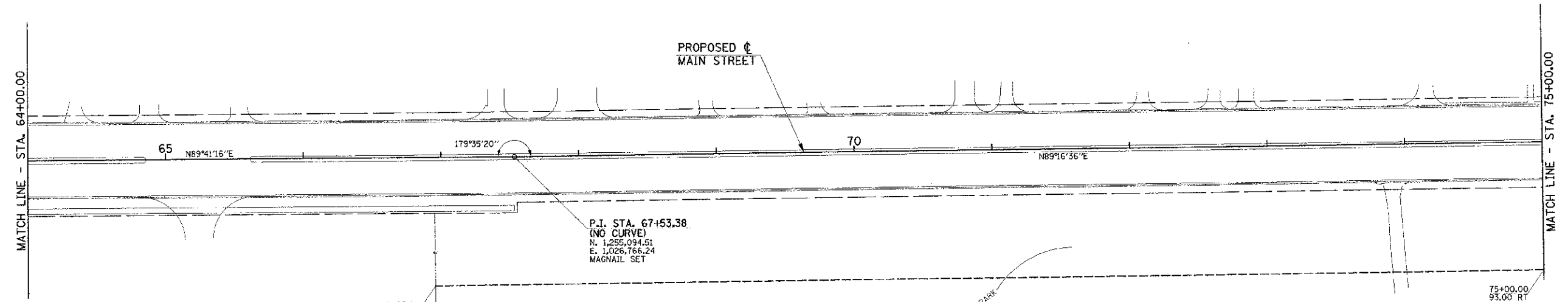


- LEGEND**
- SECTION LINE
 - EXISTING R.O.W. LINE
 - PROPERTY LINE
 - PROPOSED PERMANENT EASEMENT LINE
 - PROPOSED TEMPORARY CONSTRUCTION EASEMENT LINE



NOTE:
 COORDINATES ARE BASED ON CITY OF URBANA
 HORIZONTAL CONTROL POINT MONUMENTS AND
 PUBLISHED COORDINATE VALUES. STATIONS
 USED FOR BASIS OF COORDINATES SYSTEM
 INCLUDE NUMBERS 40, 42, 29 AND 45.

FILE NAME = p:\UG070062_Urbana - Main Street (TEP)\Plans\Sheets\07-horiz-control.dgn	DESIGNED - J.A.J.	REVISED -	STATE OF ILLINOIS DEPARTMENT OF TRANSPORTATION	HORIZONTAL ALIGNMENT LAYOUT AND CONTROL		P.A.U. RTE. 7124	SECTION 09-00483-01-RS	COUNTY CHAMPAIGN	TOTAL SHEETS 75	SHEET NO. 15
	DRAWN - D.L.M.	REVISED -		SCALE: 1"=40'	SHEET NO. 15 OF 75 SHEETS	STA. 53+00.00 TO STA. 75+00.00	MAIN STREET		CONTRACT NO. 91480	
PLOT DATE = 3/8/2013 11:44:11 PM	CHECKED - S.M.W.	REVISED -				FED. ROAD DIST. NO.		ILLINOIS FED. AID PROJECT		
	DATE - 03/2013	REVISED -								