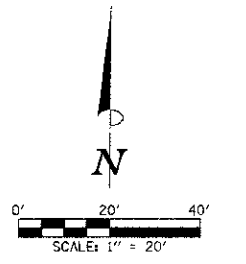
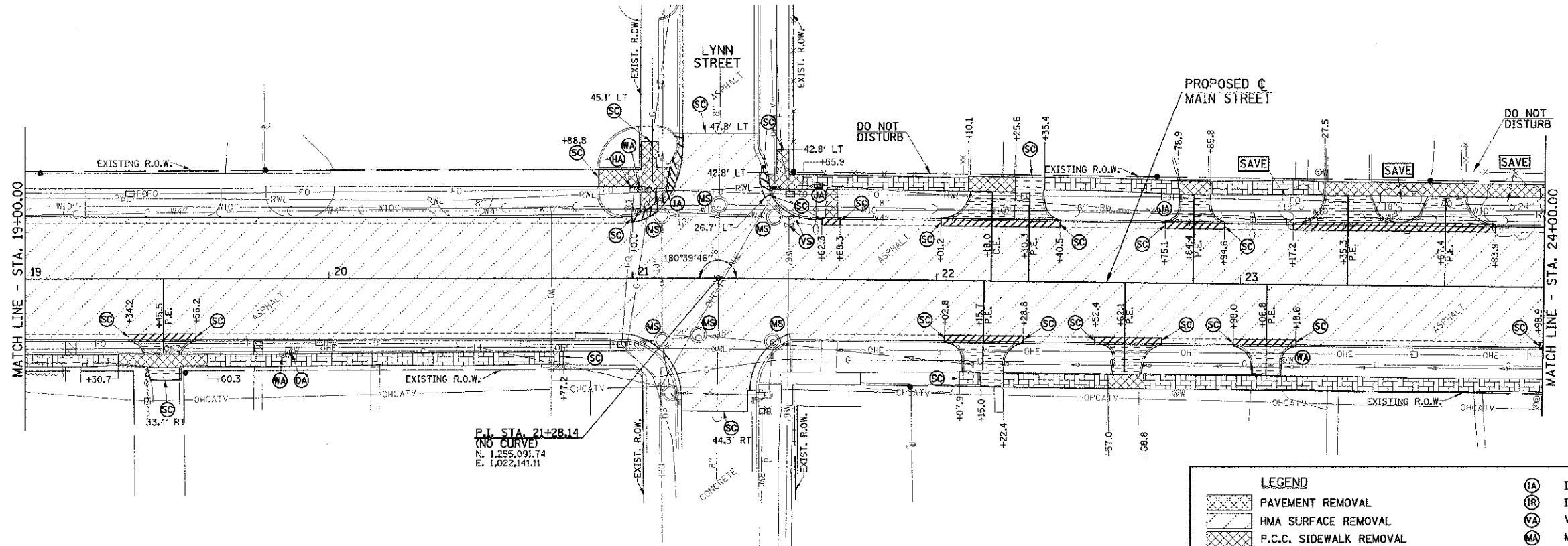


SEC. 9, T.19N., R.9E., 3rd P.M.
CHAMPAIGN COUNTY, ILLINOIS



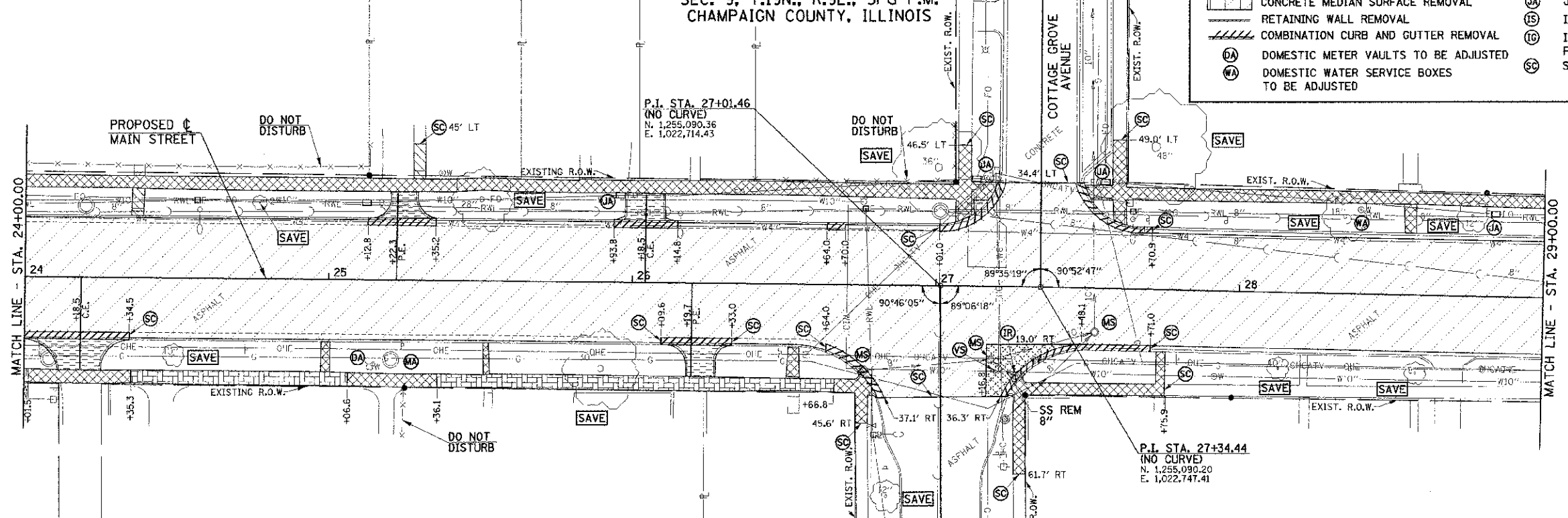
ALL TREES SHALL BE SAVED UNLESS OTHERWISE SHOWN ON THE PLANS OR DIRECTED BY THE ENGINEER.

ITEMS NOT SHOWN TO BE ADJUSTED OR REMOVED SHALL NOT BE DISTURBED UNLESS OTHERWISE DIRECTED BY THE ENGINEER.

UTILITY INFORMATION IS ONLY SHOWN IN AREAS OF PROPOSED UNDERGROUND WORK.

SEC. 16, T.19N., R.9E., 3rd P.M.
CHAMPAIGN COUNTY, ILLINOIS

SEC. 9, T.19N., R.9E., 3rd P.M.
CHAMPAIGN COUNTY, ILLINOIS



SEE SHEET 25 FOR REMOVAL NOTES.

LEGEND			
[Pattern]	PAVEMENT REMOVAL	(IA)	INLET TO BE ADJUSTED
[Pattern]	HMA SURFACE REMOVAL	(IB)	INLET TO BE REMOVED
[Pattern]	P.C.C. SIDEWALK REMOVAL	(VA)	VALVE BOXES TO BE ADJUSTED
[Pattern]	DRIVEWAY PAVEMENT REMOVAL	(MA)	MANHOLES TO BE ADJUSTED
[Pattern]	CONCRETE STEP REMOVAL	(VS)	VALVE BOXES TO BE ADJUSTED (SPECIAL)
[Pattern]	BRICK SIDEWALK REMOVAL	(MS)	MANHOLES TO BE ADJUSTED (SPECIAL)
[Pattern]	CONCRETE MEDIAN SURFACE REMOVAL	(HA)	HANDHOLE TO BE ADJUSTED
[Pattern]	RETAINING WALL REMOVAL	(JA)	JUNCTION BOX TO BE ADJUSTED
[Pattern]	COMBINATION CURB AND GUTTER REMOVAL	(IS)	INLETS TO BE ADJUSTED (SPECIAL)
(DA)	DOMESTIC METER VAULTS TO BE ADJUSTED	(IG)	INLETS TO BE ADJUSTED WITH NEW FRAME AND GRATE (SPECIAL)
(WA)	DOMESTIC WATER SERVICE BOXES TO BE ADJUSTED	(SC)	SAW CUT

FILE NAME = p:\0070062_Urbana - Main Street ITP\Plans\Sheets\08-removal.dgn
PLOT DATE = 3/6/2013 11:44:12 PM

DESIGNED - J.A.J.	REVISED -
DRAWN - D.L.M.	REVISED -
CHECKED - S.M.W.	REVISED -
DATE - 03/2013	REVISED -

STATE OF ILLINOIS
DEPARTMENT OF TRANSPORTATION

REMOVAL PLANS
SCALE: 1"=20'
SHEET NO. 18 OF 75 SHEETS
STA. 19+00.00 TO STA. 29+00.00

F.A.I.L. RTE.	SECTION	COUNTY	TOTAL SHEETS	SHEET NO.
7124	09-00483-01-R5	CHAMPAIGN	75	18
				CONTRACT NO. 91480
FED. ROAD DIST. NO. ILLINOIS FED. AID PROJECT				