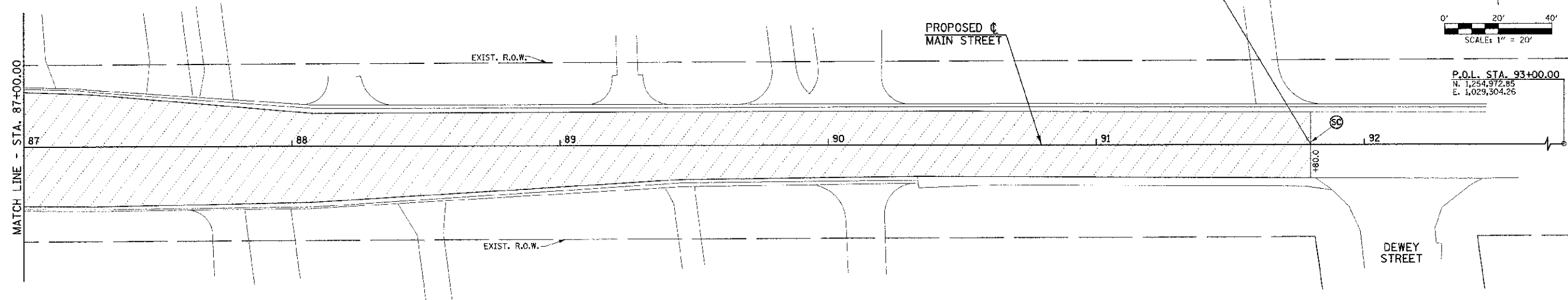


SEC. 10, T.19N., R.9E., 3rd P.M.
CHAMPAIGN COUNTY, ILLINOIS

END IMPROVEMENTS
MAIN STREET
STA. 91+80.00
(MATCH EXISTING)



SEC. 15, T.19N., R.9E., 3rd P.M.
CHAMPAIGN COUNTY, ILLINOIS

LEGEND	
	PAVEMENT REMOVAL
	HMA SURFACE REMOVAL
	P.C.C. SIDEWALK REMOVAL
	DRIVEWAY PAVEMENT REMOVAL
	CONCRETE STEP REMOVAL
	BRICK SIDEWALK REMOVAL
	CONCRETE MEDIAN SURFACE REMOVAL
	RETAINING WALL REMOVAL
	COMBINATION CURB AND GUTTER REMOVAL
	DOMESTIC METER VAULTS TO BE ADJUSTED
	DOMESTIC WATER SERVICE BOXES TO BE ADJUSTED
	INLET TO BE ADJUSTED
	INLET TO BE REMOVED
	VALVE BOXES TO BE ADJUSTED
	MANHOLES TO BE ADJUSTED
	VALVE BOXES TO BE ADJUSTED (SPECIAL)
	MANHOLES TO BE ADJUSTED (SPECIAL)
	HANDHOLE TO BE ADJUSTED
	JUNCTION BOX TO BE ADJUSTED
	INLETS TO BE ADJUSTED (SPECIAL)
	INLETS TO BE ADJUSTED WITH NEW FRAME AND GRATE (SPECIAL)
	SAW CUT

REMOVAL NOTES

- NO ADDITIONAL COMPENSATION WILL BE ALLOWED FOR PAVEMENT REMOVAL ITEMS DUE TO VARIATIONS IN THE EXISTING PAVEMENT TYPE, THICKNESS, OR AMOUNT OF REINFORCEMENT. THE ADJUSTMENT OF QUANTITIES AS SPECIFIED IN ARTICLE 440.07 OF THE STANDARD SPECIFICATIONS SHALL NOT APPLY.
- BRICK PAVERS WITHIN THE BRICK SIDEWALK REMOVAL AREAS SHALL BE SALVAGED, STORED, AND PROTECTED. THE PAVERS THAT ARE SUITABLE FOR INSTALLATION SHALL BE REINSTALLED AT THE PROPOSED BRICK SIDEWALK LOCATIONS SHOWN ON THE PLANS.
- THE CONTRACTOR SHALL MAKE FULL DEPTH SAW CUTS AT ALL PAVEMENT, SIDEWALK, CURB, AND GUTTER REMOVAL LIMITS.
- THE REMOVAL LIMITS MAY BE ADJUSTED AS DIRECTED BY THE ENGINEER.
- FOR THE 12" THICK CLASS B PATCHES, CONTROLLED LOW-STRENGTH MATERIAL SHALL BE USED TO FILL THE VOIDS TO WITHIN 16" OF THE PAVEMENT SURFACE. 4 INCHES OF SUBBASE GRANULAR MATERIAL, TYPE B SHALL BE PLACED BELOW THE CLASS B PATCHES. THE CONTROLLED LOW-STRENGTH MATERIAL AND THE SUBBASE GRANULAR MATERIAL SHALL BE INCLUDED IN THE COST OF THE CLASS B PATCHES, AND NO ADDITIONAL COMPENSATION WILL BE ALLOWED.
- THE CONTRACTOR SHALL BE RESPONSIBLE FOR REMOVING, STORING, AND RESETTING ALL EXISTING SIGNS AFFECTED BY THE CONSTRUCTION. THIS WORK WILL NOT BE PAID FOR SEPARATELY BUT SHALL BE INCLUDED IN THE COST OF THE VARIOUS REMOVAL PAY ITEMS, AND NO ADDITIONAL COMPENSATION WILL BE ALLOWED.
- THE EARTH EXCAVATION REQUIRED FOR PORTIONS OF THIS PROJECT WILL NOT BE MEASURED FOR PAYMENT BUT SHALL BE INCLUDED IN THE COST OF THE SPECIFIC CONSTRUCTION PAY ITEM REQUIRING THE EXCAVATION, AND NO ADDITIONAL COMPENSATION WILL BE ALLOWED. HOWEVER, THE EARTH EXCAVATION REQUIRED FOR CONSTRUCTION OF THE SHARED USE PATH WILL BE PAID FOR AT THE CONTRACT UNIT PRICE PER CUBIC YARD FOR EARTH EXCAVATION (SPECIAL). FOR ADDITIONAL INFORMATION, REFER TO THE EARTHWORK SUMMARY AND CROSS SECTIONS FOR THE SHARED USE PATH.

SOME OF THE TOPOGRAPHIC INFORMATION OUTSIDE OF THE ROADWAY SHOWN ON THIS SHEET IS BASED ON AERIAL PHOTOGRAPHY AND IS APPROXIMATE.

UTILITY INFORMATION IS ONLY SHOWN IN AREAS OF PROPOSED UNDERGROUND WORK.

ITEMS NOT SHOWN TO BE ADJUSTED OR REMOVED SHALL NOT BE DISTURBED UNLESS OTHERWISE DIRECTED BY THE ENGINEER.

ALL TREES SHALL BE SAVED UNLESS OTHERWISE SHOWN ON THE PLANS OR DIRECTED BY THE ENGINEER.

FILE NAME = p:\0070062_Urbana - Main Street (TEP)\Plans\sheet\08-removal.dwg
PLOT DATE = 3/9/2013 11:44:13 PM

DESIGNED - J.A.J.	REVISED -
DRAWN - D.L.M.	REVISED -
CHECKED - S.M.W.	REVISED -
DATE - 03/2013	REVISED -

STATE OF ILLINOIS
DEPARTMENT OF TRANSPORTATION

REMOVAL PLANS

SCALE : 1"=20' SHEET NO. 25 OF 75 SHEETS STA. 87+00.00 TO STA. 93+00.00

F.A.U. RTE.	SECTION	COUNTY	TOTAL SHEETS	SHEET NO.
7124	09-00483-01-RS	CHAMPAIGN	75	25
MAIN STREET		CONTRACT NO. 91480		
FED. ROAD DIST. NO.		ILLINOIS FED. AID PROJECT		