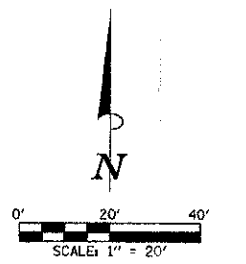
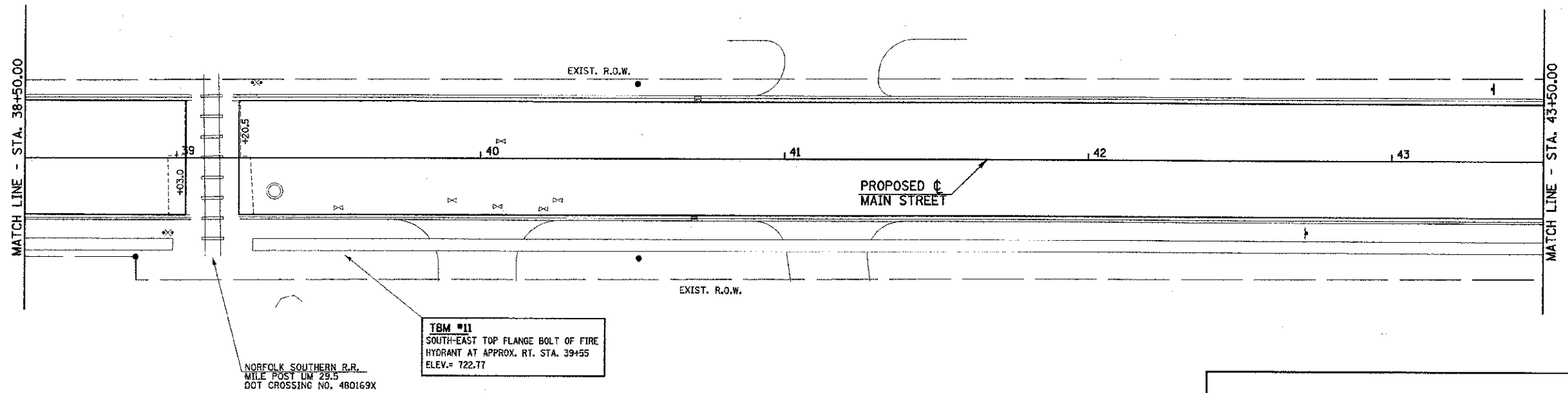


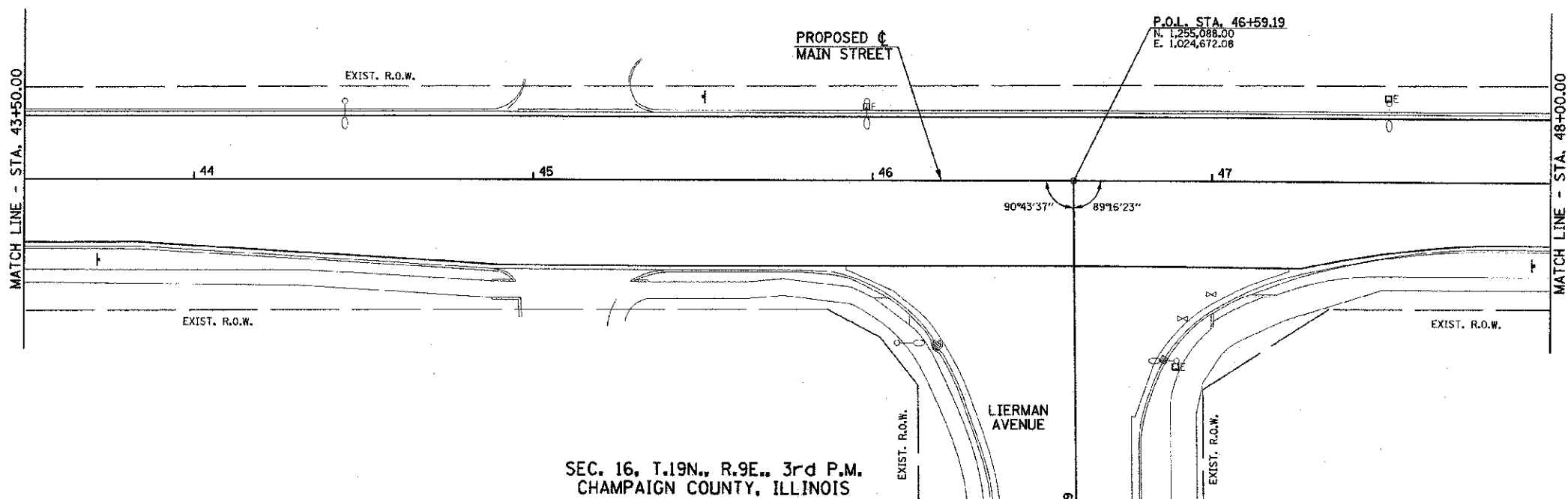
SEC. 9, T.19N., R.9E., 3rd P.M.  
CHAMPAIGN COUNTY, ILLINOIS

TRANSITION FROM STA. 38+20.00 TO STA. 39+03.00  
 POLYMERIZED HOT-MIX ASPHALT SURFACE COURSE, MIX "D", N90 (2" THICK)  
 OVER POLYMERIZED LEVELING BINDER (MACHINE METHOD), IL-9.5FG, N90 (2" THICK) TO  
 POLYMERIZED HOT-MIX ASPHALT SURFACE COURSE, MIX "D", N90 (2" THICK) AT STA. 39+03.00  
 (SEE TYPICAL SECTIONS AND MISCELLANEOUS DETAILS)  
 POLYMERIZED HOT-MIX ASPHALT SURFACE COURSE, MIX "D", N90 (2" THICK)  
 STA. 39+20.50 TO STA. 43+50.00



SEC. 16, T.19N., R.9E., 3rd P.M.  
CHAMPAIGN COUNTY, ILLINOIS  
 SEC. 9, T.19N., R.9E., 3rd P.M.  
CHAMPAIGN COUNTY, ILLINOIS

POLYMERIZED HOT-MIX ASPHALT SURFACE COURSE, MIX "D", N90 (2" THICK)  
 STA. 43+50.00 TO STA. 48+00.00



STRUCTURE LEGEND		LEGEND	
TA - TYPE A (MANHOLE OR INLET)			PORTLAND CEMENT CONCRETE BASE COURSE 10"
TB - TYPE B (INLET)			PORTLAND CEMENT CONCRETE DRIVEWAY PAVEMENT (6" P.E.-8" C.E.)
R.D. - RESTRICTED DEPTH			PORTLAND CEMENT CONCRETE SIDEWALK 6"
◊ RIM - CENTER OF 2" OPENING			DETECTABLE WARNINGS
RIM - TOP OF FRAME ELEVATION			BRICK SIDEWALK
T/F.S.T. - TOP OF FLAT SLAB TOP			TEMPORARY CONSTRUCTION EASEMENT
3 - TYPE 3 FRAME AND GRATE			
INV. - INVERT ELEVATION			

**KEY NOTES**

- 1' STUB (SEE PROP. TYPICAL SECTION NOTE 7)
- SEE INTERSECTION DETAILS FOR CURB LIMITS AND ELEVATIONS

**NOTE:**  
 ALL SIDEWALK P.I. AND DRIVEWAY ELEVATION INFORMATION IS GIVEN AT THE BACK OF WALK OR FACE OF CURB (S/W = SIDEWALK, T/C = TOP OF CURB). SEE INTERSECTION DETAILS FOR ADDITIONAL INFORMATION AT INTERSECTION QUADRANTS.

SEE HORIZONTAL ALIGNMENT LAYOUT AND CONTROL SHEETS FOR TEMPORARY CONSTRUCTION EASEMENT AND PERMANENT EASEMENT GEOMETRY.

UTILITY INFORMATION IS ONLY SHOWN IN AREAS OF PROPOSED UNDERGROUND WORK.

SOME OF THE TOPOGRAPHIC INFORMATION OUTSIDE OF THE ROADWAY SHOWN ON THIS SHEET IS BASED ON AERIAL PHOTOGRAPHY AND IS APPROXIMATE.

ALL STREET RADII ARE DIMENSIONED TO THE BACK OF CURB.

THE HEIGHT OF ALL PROPOSED MONOLITHIC SIDEWALK CURB, PCC SIDEWALK CURB, AND CONCRETE CURB TYPE B (SPECIAL) SHALL TRANSITION TO MATCH THE HEIGHT OF THE EXISTING CURB OR STEPS THAT THE CURB CONNECTS TO OR SHALL TRANSITION TO ZERO HEIGHT AT EXISTING GROUND UNLESS OTHERWISE DIRECTED BY THE ENGINEER.

FILE NAME = p:\00070062_Urbana - Main Street ITEP\Plans\sheet109-roadway.dgn	DESIGNED - J.A.J.	REVISED -	STATE OF ILLINOIS DEPARTMENT OF TRANSPORTATION	ROADWAY PLANS	F.A.U. R.T.E. 7124	SECTION 09-00483-01-RS	COUNTY CHAMPAIGN	TOTAL SHEETS 75	SHEET NO. 29	
PLOT DATE = 3/8/2013 11:44:15 PM	DRAWN - J.L.B.	REVISED -			SCALE: 1"=20'	SHEET NO. 29 OF 75 SHEETS	STA. 38+50.00 TO STA. 48+00.00	CONTRACT NO. 91480		
	CHECKED - S.M.W.	REVISED -			FED. ROAD DIST. NO. ILLINOIS FED. AID PROJECT					
	DATE - 03/2013	REVISED -								