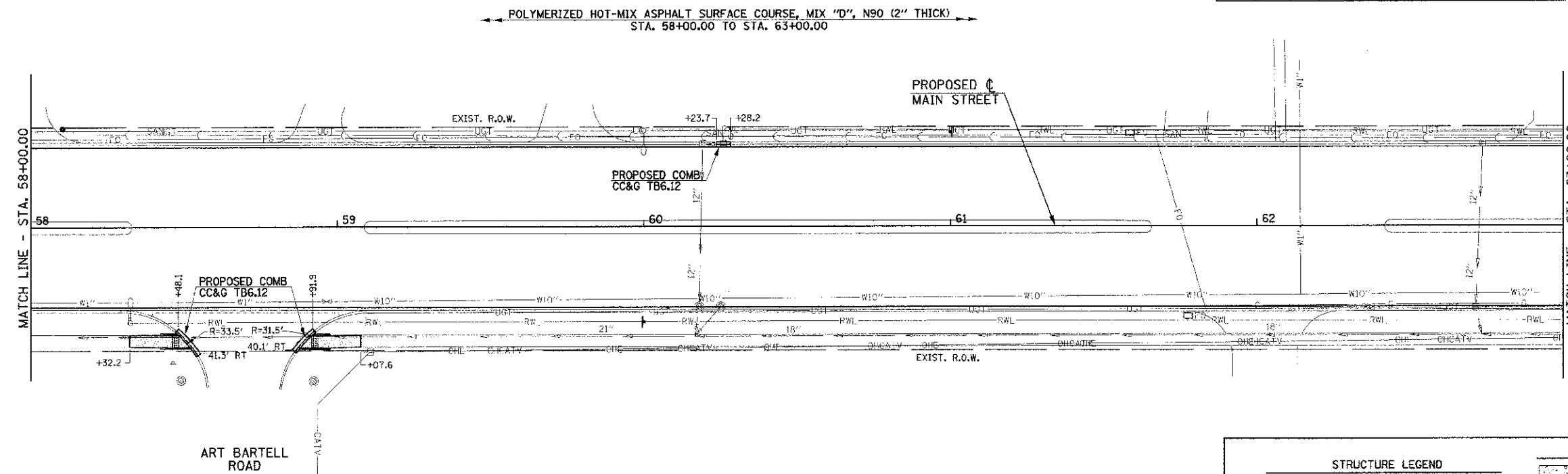
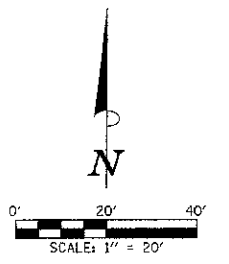


SEC. 9, T.19N., R.9E., 3rd P.M.
CHAMPAIGN COUNTY, ILLINOIS

NOTE:
ALL SIDEWALK P.I. AND DRIVEWAY ELEVATION INFORMATION IS GIVEN AT THE BACK OF WALK OR FACE OF CURB (S/W = SIDEWALK, T/C = TOP OF CURB). SEE INTERSECTION DETAILS FOR ADDITIONAL INFORMATION AT INTERSECTION QUADRANTS.



THE HEIGHT OF ALL PROPOSED MONOLITHIC SIDEWALK CURB, PCC SIDEWALK CURB, AND CONCRETE CURB TYPE B (SPECIAL) SHALL TRANSITION TO MATCH THE HEIGHT OF THE EXISTING CURB OR STEPS THAT THE CURB CONNECTS TO OR SHALL TRANSITION TO ZERO HEIGHT AT EXISTING GROUND UNLESS OTHERWISE DIRECTED BY THE ENGINEER.

ALL STREET RADII ARE DIMENSIONED TO THE BACK OF CURB.

SEE HORIZONTAL ALIGNMENT LAYOUT AND CONTROL SHEETS FOR TEMPORARY CONSTRUCTION EASEMENT AND PERMANENT EASEMENT GEOMETRY.

SOME OF THE TOPOGRAPHIC INFORMATION OUTSIDE OF THE ROADWAY SHOWN ON THIS SHEET IS BASED ON AERIAL PHOTOGRAPHY AND IS APPROXIMATE.

UTILITY INFORMATION IS ONLY SHOWN IN AREAS OF PROPOSED UNDERGROUND WORK.

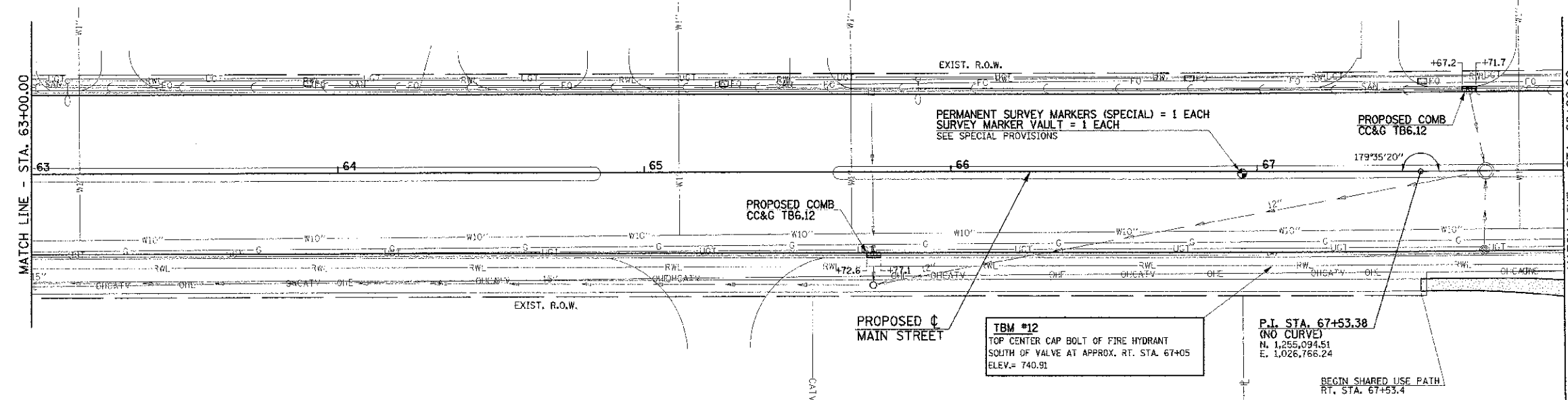
SEC. 16, T.19N., R.9E., 3rd P.M.
CHAMPAIGN COUNTY, ILLINOIS

SEC. 9, T.19N., R.9E., 3rd P.M.
CHAMPAIGN COUNTY, ILLINOIS

STRUCTURE LEGEND		LEGEND	
TA - TYPE A (MANHOLE OR INLET)			PORTLAND CEMENT CONCRETE BASE COURSE 10"
TB - TYPE B (INLET)			PORTLAND CEMENT CONCRETE DRIVEWAY PAVEMENT (6" P.E.-8" C.E.)
R.D. - RESTRICTED DEPTH			PORTLAND CEMENT CONCRETE SIDEWALK 6"
⊕ RIM - CENTER OF 2' OPENING			DETECTABLE WARNINGS
RIM - TOP OF FRAME ELEVATION			BRICK SIDEWALK
T/F.S.T. - TOP OF FLAT SLAB TOP			TEMPORARY CONSTRUCTION EASEMENT
3 - TYPE 3 FRAME AND GRATE			
INV. - INVERT ELEVATION			

KEY NOTES
 ① 1' STUB (SEE PROP. TYPICAL SECTION NOTE 7)
 ② SEE INTERSECTION DETAILS FOR CURB LIMITS AND ELEVATIONS

POLYMERIZED HOT-MIX ASPHALT SURFACE COURSE, MIX "D", N90 (2" THICK)
STA. 63+00.00 TO STA. 68+00.00



SEE THE SHARED USE PATH PLAN AND PROFILE SHEETS AND CROSS SECTION SHEETS FOR ADDITIONAL INFORMATION.

SEC. 16, T.19N., R.9E., 3rd P.M.
CHAMPAIGN COUNTY, ILLINOIS

FILE NAME = p:\U0070062_Urbane - Main Street (TEP)\Plans\sheet\09-roadway.dgn	DESIGNED - J.A.J.	REVISED -	STATE OF ILLINOIS DEPARTMENT OF TRANSPORTATION	ROADWAY PLANS			F.A.U. RTE.	SECTION	COUNTY	TOTAL SHEET
PLOT DATE = 3/8/2013 11:44:15 PM	DRAWN - J.L.B.	REVISED -		SCALE: 1"=20'	SHEET NO. 31 OF 75 SHEETS	STA. 58+00.00 TO STA. 68+00.00	7124	09-00483-01-RS	CHAMPAIGN	75 31
	CHECKED - S.M.W.	REVISED -					MAIN STREET		CONTRACT NO. 91480	
	DATE - 03/2013	REVISED -					FED. ROAD DIST. NO.		ILLINOIS FED. AID PROJECT	